

1250 - sow unit

(Continued from Page A1)

will be located in the complex, ranging from birth to market weight.

The connecting section between the two will contain a load-out area and facilities to move stock from the nursery into the grower pens. Also offices and security areas will be included.

The complex will be entirely environmentally controlled with strict shower-in and shower-out regulations.

The complex will be operated by a staff of six people. Two will handle breeding in the two breeding areas.

A total of 100 farrowing crates will be divided into four units to conform to the three-week weaning schedule.

Stock will move on to pre-nursery and nursery areas and finally to the smaller grower pens in the center of the second building and finally to the finisher pens.

Manure handling will include a

total scraper system.

"We do not believe in growing pigs over manure pits," Lehr said.

A methane digester system will also be installed designed for sell-back of electricity to the utility and cover all power and heating costs.

Marketing of the finished hogs to Hatfield Packing will include some two and one-half tractor trailer loads a week - nearly 500 hogs - beginning about mid-1985.

This unit will bring Pennfield's sow numbers in major complexes both on contract and managed to about 7,500. These complexes range from about 300 sows to this 1250-unit.

"Through our hog division, we're attempting to balance out our feed business," Lehr said.

"We want to make these complexes full-time business operations on an efficient, profitable basis in this area.

"We're working to locate them in areas with sufficient acreage to support them and in areas where they are acceptable."



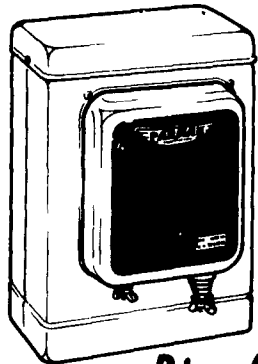
First building of new 1250-sow operation begins to take shape in York County.

For All Your Fencer Needs, It Will Pay You Well To Start With, Or Switch To, The Oldest Name In Electric Fencers And The World's Largest Selling Brand...



MAGNUM 12 MODEL

12 Volt Solid-State Circuitry Reduces Battery Drain To The Minimum. Low Impedance To Shock Through Wet Weeds and Brush. Power You Never Dreamed Possible From A Battery Fencer. No Moving Parts Means More Years Of Dependable, Trouble-Free Operation. Charges Up To 25 Miles Of Fence. UL Listed.



Prices As Low As \$45.95

Made in U.S.A.

1 Year Warranty, Including Lightning Damage, With Prompt Local Service Available
• Other models available, including Hi-Line Fencers.

— SALES AND SERVICE —

If Your Local Dealer Does Not Have It, Contact

PIQUIA BATTERIES

Ronks, PA 17572

Distributor & Warranty Station for Parmar

FISHER'S PAINTING

- ALL TYPES OF INTERIOR & EXTERIOR PAINTING
- SANDBLASTING
- ROOF COATING
- RESTORATION & WATER PROOFING ON STONE & BRICK BUILDINGS

We Specialize In Farm Buildings, Feed Mills, Water Tanks, Etc. With Aerial Equipment

If you need good paint, roof coatings, or paint accessories at reasonable prices, stop at our new outlet store.

We buy in large quantities

STORE, SHOP AND OFFICE LOCATED IN OLD STONE BARN AT:
4056A Newport Road
Kinzers, PA 17535
(Across From Pequea Valley School)
717-768-3239

PROFIT PROFIT PROFIT PROFIT PROFIT PROFIT PROFIT

"MY W&J DAIRY COMPUTERIZED FEEDING SYSTEM SAVED THE DAY WHEN THE DROUGHT HIT US LAST YEAR"

SAYS DAVE BARTRAM of RD #1, Cochranville, Pa.



Herdsman Dean Amspacher & Dave Bartram

Dave continues, "The drought hit us last year and we have been switching feed frequently as we were forced to buy our feed.

Thanks to our W & J Computerized Feeding System we were able to hold down our feed cost and keep our herd average from falling off.

It was a wise investment and I am glad I made it when I did. I know we couldn't have stayed even without it.

This year, we should get the maximum benefit from our feeding system and see a nice increase in our herd average."

*Is Your Herd At It's Full Potential?
Call W&J Dairy Sales For A Free Evaluation.
Learn What They Can Do For You.*

W & J DAIRY SALES

BOU-MATIC
Computerized Feed Management System

1202 Lloyds Rd.
Oxford, Pa.
(717) 529-2569

ZERO
BETA
Dairy Computer

LET Ag Tec HANDLE ALL YOUR SPRAYING NEEDS



give your vegetables wrap around protection

- Featuring:
- 190 MPH Air Stream
 - Rotating Head (3 Pt. Hitch or Pull-Type) Sprays With The Wind
 - Low Volume Efficiency Reduces Chemical & Fuel Cost



SHORT ON CASH?

If So Consider Our 3 Yr. Leasing Program Available On Ag Tec Sprayer Only See Us For details

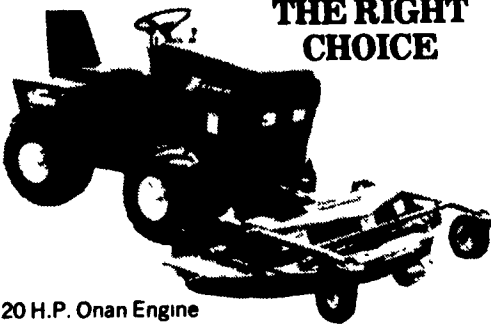
Lancaster County's Only Dealer Specializing In Sprayer Sales & Service

LESTER A. SINGER

Ronks, PA Ph: (717) 687-6712
Hours: Monday thru Friday 8-5; Sat. By App't.

STEINER

THE RIGHT CHOICE



- 20 H.P. Onan Engine
- Single Shift Hydrostatic Drive
- High Flotation Tires of Equal Size
- Low Center of Gravity for High Stability
- Center Pivot Frame with Power Steering
- Front Mounted Accessories for Greater Control & Visibility

ATTACHMENTS

- 48 & 60 Mower Deck
- 48 Snowblower
- 48 Tiller
- 3 Point Lift
- 48 & 60 Dozer Blade
- Lawn Vacuum
- Rotary Broom
- Utility Trailer

USED MODEL S18 STEINER TRACTOR w/60" Mower **\$4,395**

WES STAUFFER SALES & SERVICE

RD 3, Ephrata, PA 17522
(717) 738-4215
Ephrata Exit New Rt. 222, 1/2 Mile West on Rt. 322, Turn left onto Pleasant Valley Rd.