

# Dairy and Livestock Sales

## Public Auction Register

Closing Date Monday 5:00 P.M.  
of each week's publication

FRI SEPTEMBER 21  
Landsburg, PA Kling's  
Fall Invitational William  
Kent, Bergen, NY  
Pedigrees Kling's Auction  
Sale Managers

FRI SEPTEMBER 21  
6:30 PM Public Auction of  
Feeder Cattle and Feeder  
Pigs Located at Keister's  
Middleburg Auction Sales,  
Inc., Rt. 522, 3 miles east  
of Middleburg, PA, 5  
miles west of Selinsgrove,  
PA Don & Walt Keister,  
Owners Ray Long & Dave  
Imes, Auctioneers

SAT SEPTEMBER 22  
Public Auction Benefit  
Sale for West Fallowfield  
Christian School Located  
2 miles south of Atglen,  
PA along Old Rt. 41,  
Newport Pike Leon  
Kurtz, Auctioneer

SAT SEPTEMBER 22 - 9  
AM Public Auction Benefit  
for Fairview Christian  
School Selling Quilts and  
new Merchandise  
Located at the Fivepoint  
ville Firehall along Rt. 897  
and Fivepointville Roy  
Good, Jr., Randall Kline  
and Lloyd Kreider, Auc-  
tioneers

SAT SEPTEMBER 22  
9:30 AM Public Auction of  
Antiques, Household &  
Blacksmith Tools Located  
in Yocumtown, York Co.,  
PA Yocumtown is east of  
Rt. 83 at Exit 14, between  
Harrisburg & York Ruth  
Tusing, Owner Blaine N  
& Nevin B Rentzel, Auc-  
tioneers

TUES SEPTEMBER 25 - 7  
PM Public Sale of Feeder  
Cattle and Feeder Pigs at  
Carlisle Livestock Market  
exit 12 off I 81,  
717 249-4511

FRI SEPTEMBER 28 - 10  
AM Dairy Show, 1:30 PM  
Dairy Sale Located at the  
Penns Valley Livestock  
Auction, Centre Hall, PA  
Ron Gilligan, Auctioneer

SAT SEPTEMBER 29 12  
Noon Red Carpet Horse  
Sale Public Auction of  
Registered Quarter, Ap-  
palooosa and  
Thoroughbred Horses  
Located at the Cambria  
Co. Fairgrounds  
Edensburg, PA Kevin  
Hines and Chris Rowe  
Owners Davis and  
Templeton, Auctioneers

SAT SEPTEMBER 29  
Consignment Heifer Sale  
to Benefit Elementary  
Christian Schools  
Located 6 miles east of  
Lancaster at the Guernsey  
Sales Pavilion Larry  
Kennel Manager

SAT SEPTEMBER 29 11  
AM Public Auction of  
Horses Located at  
Keister's Middleburg Auc-  
tion Sales, Inc., Rt. 522, 3  
miles east of Middleburg,  
PA, 5 miles west of Selin-  
sgrove, PA Don & Walt  
Keister Owners Ray

Long & Dave Imes Auc-  
tioneers

OCT.

WED OCTOBER 3 9:30

AM Show, 12 Noon Sale  
Annual Cow Show and  
Sale Located at the  
Belleville Livestock  
Market, Belleville PA  
Mark Glick, Auctioneer

THURSDAY OCT 4 Month-  
ly Cow Sale at Mel Kolb,  
Inc Lancaster Farm  
2220 Dairy Road Lan-  
caster PA

## HOLSTEIN DISPERSAL

On the farm located 4½ miles west of  
Harrington on country road No. 455 in  
Delaware. Take Route 14 west out of  
Harrington, turn right on Route 59 and  
go to first crossroads, turn left onto road  
No. 455 and go to first farm on right.  
From Denton go east on Route 317  
(which becomes Delaware Route No. 14)  
to Vernon, take county road No. 455 from  
Vernon and turn left to farm.

**TUESDAY, AUGUST 14, 1984**  
11:00 A.M.

**60 HEAD OF HOLSTEINS**  
29 Cows — 31 Heifers  
All Registered Except 3

Tested for Interstate  
Pregnancy Checked

Sired by outstanding sires: Milestone, Betty  
Chief, Cinnamon, New Hope, Fury Ivan,  
Willow, Marvex, Marlu Classic, Audets Fond  
Matt, Astronaut King, Jerry, Gemini, Double  
Triune, Sexation, Wiseman, Dynamo, Spirit,  
Very and Chairman.

### THE COWS

A young herd with 200 head milking with first  
and second calves. They are a good uddered  
herd with lots of dairy character. A number  
recently fresh and many due for fall. Service  
sires include Columbus, Ira, Chairman and  
Electra.

### THE HEIFERS

All home raised, well grown, and A1 sired.  
They are a very nice group of young cattle that  
will make excellent herd replacements.

#### A Few of Those Selling:

A Jerry dtr. with	23,209	3.5	840
A Betty Chief with	23,360	3.0	689
An Astronaut King with	18,668	3.5	673
A Marlu Classic with	21,458	3.7	784

An Elevation gr-dtr whose dam and gr-dam  
are both EX and both have over 23,000M. She's  
milking with second calf after making 13,500 as  
a Jr. 2-yr. old.

Many others that will please —  
a good young Registered herd!

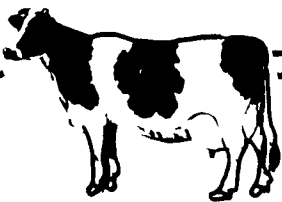
TERMS: Cash or Good Check

Catalogs at sale time

Lunch available

OWNER  
**JAMES E. RICHARDSON**  
Rt 2, Box 223  
Harrington, DE 19952  
Ph. 302-398-4392

SALE MANAGER  
**REMSBURG SALE SERVICE**  
P.O. Box 177  
Jefferson, MD 21755  
Ph. 301-473-8214



## NEW HOLLAND SALES STABLES, INC.

New Holland, Pa.

### DAIRY SALE CONSIGNMENTS

For

**WEDNESDAY, AUGUST 8, 1984**

- \* 1 load Purebred and Grade Canadian Cows,  
fresh and springers, consigned by Leroy Smucker.
- \* 1 load fresh and springer cows consigned by Merle Breneman.
- \* 1 load Purebred and Grades, fresh and springer cows,  
consigned by H.D. Matz.
- \* 1 load fresh and springer cows consigned by Norman and David Kolb.
- \* 1 load Fresh and springer cows consigned by Marvin Eshleman.
- \* 1 load fresh cows consigned by Alfred Albright.
- \* 1 load fresh and springer cows consigned by Raymond Smucker.

TUES OCTOBER 9 7 PM  
Public Sale of Feeder Cat-  
tle and Feeder Pigs at  
Carlisle Livestock Market  
exit 12 off I 81,  
717 249-4511

WED OCTOBER 10 12  
Noon Public Auction of  
the Western PA Sale of  
Stars Located in Butler  
PA

FRI OCTOBER 12 1:30  
PM Public Auction of  
State Grade Consignor  
Feeder Pig Sale Located  
at the Carlisle Livestock  
Market, Inc

SAT OCTOBER 13 10:00  
AM Annual Fall Heifer  
Sale at New Holland Sales  
Stable, Inc 12 miles East  
of Lancaster off Rt. 23 in  
New Holland, PA Abe Dif-  
fenbach, Manager

SAT OCTOBER 13 9 AM  
Public Auction of a 60  
Acre Farm, Farm Equip-  
ment, Antiques and

Household Goods  
Located in Brecknock  
Twp., Berks Co Carl H  
and William J Moore,  
Owners Horning Farm  
Agency, Inc., Auctioneers

SAT OCT 13 Public  
Auction of Farm  
Machinery and Related  
Items Located 6 miles  
south of Richfield off Rt  
104 Elwood Flowers,  
Owner Bryan D Imes  
Auctioneer

THURS OCTOBER 18  
Monthly Cow Sale at Mel  
Kolb, Inc., Maryland  
Farm Woodsboro, MD, ½  
mile North West of  
Woodsboro on Rt 550 in  
Frederick Co

FRI OCTOBER 19 7 PM  
Public Auction of State  
Graded Feeder Cattle  
Sale Located at the  
Penns Valley Livestock  
Auction, Centre Hall, PA  
Ron Gilligan, Auctioneer

## CONSIGNMENT AUCTION

Sale will be held on the Gordon Wood  
farm at the junction of Rt. 6 & 660 next to  
the Y Drive in theatre 6 miles from  
Mansfield and 4 miles from Wellsboro.

**FRIDAY-AUGUST 10, 1984**

At 1:00 Sharp

**70-REG. & HIGH GRADE HOLSTEINS-70  
20 REG. 50 GRADES & 3 JERSEYS**

We have a completed herd from Lewisburg,  
Pa. plus picked 20 cows from a local herd. Both  
of these herds cattle are in all stages of lac-  
tation also we will have 15 cows fresh or close  
that you will like. Interstate tested, preg. ex.  
charts day of sale. Check that bulk tank; its  
time to get rid of your beef and put in a good  
replacement. See you Aug. 10.

TERMS: Cash or Good check.

Sales Mgr-

**GORDON WOOD**

Mansfield, Pa.

Phone 717-549-4901

For the most in advertising coverage and  
preparing your sale. Call Woods Auction  
Service.

Sale Under Cover  
Lunch Available

## THE CONESTOGA CLASSIC

- 50 Head of Outstanding Holsteins Sell -

**Wednesday Eve., August 8, 1984**

At 7:00 P.M.

Location: At the Lampeter Fairgrounds, along Rt. 741 between  
Strasburg and junction of Rt. 222 approximately 5 miles south-  
east of Lancaster.

Sale includes about: 30 Young Cows With Potential Galore  
20 Bred Heifers Due In Fall  
3 Show Calves

All With Pedigree's Featuring High Production And Type

\* Dam's of animals selling include:

- \* 3 Excellent
- \* 25 Very Good
- \* 10 With Records Between 25,000 & 31,000 Milk
- \* 34 Over 20,000
- \* And Lots Of High Test

Animals selling are sired by the breed greats: Valiant, Glendell, Jason, Jet Stream,  
Sexation, Tony Tradition, Milkmaster, Astronaut, Conductor, Pete, Cavalier, Columbus,  
Mars, Elevation, Bell, and many more.

Just a sample of some selling:

- \* Jason bred to Valiant from six gen. VG or EX Dam  
over 1,000 index
- \* Glendell bred to Tony VG-88 Dam & Gr. Dam, 3rd  
Dam EX
- \* Valiant bred to Columbus VG-85 Dam EX Gr Dam  
4.2% test
- \* Jet Stream from 3 gen. VG Due Sale Time
- \* VG-86 1st Calf Valiant With High Index Due After  
Sale to RORAE Dam: 31,000
- \* Fresh Tradition 1st 2 yr. old 1984 Lanc. Co.  
Holstein Show Ex. Dam, 88 Gr. Dam
- \* Fresh Milkmater Gr. Dam EX, 3rd Dam EX 95  
40,000 milk
- \* VG-88 Apache Grand Champion in 1983  
Potential EX
- \* Fresh Mars Tony 3 Gen. Over 20,000
- \* Columbus Calf From VG-87 Dam Over 21,000  
4.0%
- \* Sexation Due After Sale To Bell Dam 25,000,  
196,000 Lifetime VG-85
- \* VG-88 Wayne Due After Sale To Glendell
- \* Valiant Bred to Columbus - Dam Over 22,000
- \* Gemini Fresh - Dam EX-91 25,000
- \* VG Country King - 1983 Grand Champion - Dam  
25,000
- \* Fresh Conductor with 17,000 5.0% at 2 Yrs.,  
Not Scored yet
- \* Oak Star Due August From 3 Gen Over 4.7%

It's Your Opportunity

Sponsored by:

**Lancaster County Holstein Club**

Auct: Mike Weimer

Ped: Jay Howes

Penna. Holstein Assoc., Clerk

Chairman: D. Lamar Witmer

RD #3 Box 358

Manheim, Pa. 17545

717-665-3778

(Free Dairy Bar Following Sale, Sponsored by Em Tran Inc.)