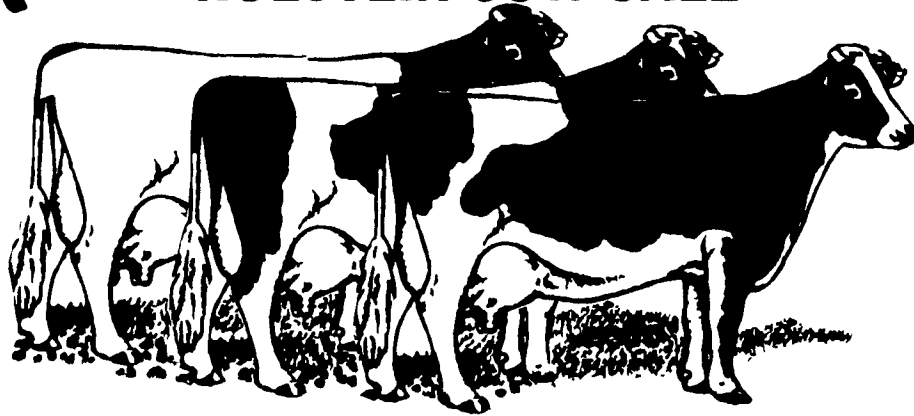


MELVIN KOLB, INC.

HOLSTEIN COW SALE

**THURSDAY,
AUGUST 2ND
7:30 PM**



LOCATION:

West of Lancaster on Dairy Road. Take Rt. 283 west of Lancaster, exit beyond ABC Stud Barns at Flory Mill Rd., turn left after exiting, go to Mill, then sharp right under railroad bridge. Barn is within sight of Rt. 283.

150 HEAD

COWS & HEIFERS

150 HEAD

50 PUREBREDS, first, second & third calf cows; some are fancy with very good classifications, records & pedigrees.

50 real top first calf heifers, some are milking between 50 and 60 lbs. per day.

25 big heavy-milking GRADE cows that will suit the most particular buyer.

25 really good GRADE cows from New York; fresh milking from 80 to 100 lbs. per day.

SAMPLE OF SOME TOP COWS IN SALE:

- * A FULTONWAY TURBULANCE dau., dam 330d 21414M 653F
- * A VG-85 PACLAMAR ASTRONAUT dau. 3y 16604M 722F
- * A ZION-VIEW AMYS GRAND FORTUNE dau. with 20719M 828F
- * A WILLOW FARM ROCKMAN IVANHOE dau. with 17342M 732F
- * A BIS-MAY ASTRO JUPITER dau., dam 305d 20790M 4.0 822F
- * A 2 yr. old ZION-VIEW AMYS GRAND FORTUNE dau., dam 305d 17820M 4.6 826F
- * A CHAPEL-BANK APACHE dau. at 3y 14310M 3.8 548F, dam 18716M 3.8 708F
- * A FULTONWAY MILU CHIEF FASHIN dau., dam VG-86 ASTRONAUT dau. with 22613M 868F
- * A real nice 2 yr. old STRAIGHT PINE ELEVATION PEPE dau., just fresh, from a SEILING ROCKMAN gr. dam.
- * A big fancy 1st calf HANOVER HILL TRIPLE THREAT dau. with 3 generations of dams having 4.0 test, springing-due August.
- * A BIS-MAY ASTRO JUPITER dau. milking 70 lbs., dam 305d 19700M 3.8 740F
- * A BROWDALE CONCORD-ET dau., dam EX-90 with 19060M, gr. dam VG
- * A POVERTY-HOLLOW MILESTONE dau.
- * A STREPHON dau. bred to GRAND FORTUNE - due July 30
- * A WHOLESOME PERSEUS LEADER dau.
- * An OCEAN-VIEW SEXATION dau.
- * A PACLAMAR ASTRONAUT dau., dam with 19373M

ALSO SELLING - 2 Service Age Bulls:

- A KENMARDE PEACHUM BARNEY Son, dam VG-87 315d 18909M 681F
- A STONEYLAWN PACLAMAR LEPRECHAUN Son, dam VG-86 335d 20536M 803F

ANNOUNCING



FREE REFRESHMENTS - THERE WILL BE A SPECIAL TREAT FOR ALL DAIRYMEN!

DOOR PRIZE: PUREBRED HEIFER CALF
Must be a buyer to be eligible and present to win.

FREE TRANSPORTATION FOR LANC. CO. AMISH - Please Call 569-2106 or 569-6800

MELVIN KOLB
Sale Manager

ROBERT C. MULLENDORE
Auctioneer AU-000644-L

HENRY KETTERING
Pedigrees