

York Co. DHIA

(Continued from Page D33)

Farm Name	3	6.3	305	19,954	4.2	837
Walkers Farm	3	6.3	305	19,954	4.2	837
107	3	4.9	304	17,163	3.9	670
882	3	4.2	305	17,851	3.8	680
17						
David Stewart						
Bell	3	7.6	305	20,143	3.6	729
Beth 53	3	7.5	305	18,613	3.5	658
Sibyl	3	5.7	305	19,308	3.7	719
Fiaa	3	3.7	305	19,643	3.7	723
Walnut Hill Farm						
Elaina	3	4.10	305	18,733	4.2	786
Fawn Meadow Holstein						
135	3	4.10	305	20,822	3.4	710
76	3	3.9	305	19,400	3.6	703
23	3	3.8	305	17,821	3.9	699
28	3	2.5	305	15,679	4.2	662
My TT Farms						
Horny	3	7.9	305	18,538	4.0	746
Deal Holsteins Farm						
174	3	2.10	305	14,039	4.8	670
Barrens View Fm						
63	3	5.5	305	21,490	3.7	788
6	3	3.3	299	21,576	3.4	727
Jim & Holly McCaffree						
Mindy	3	4.10	305	19,912	3.7	734
Lillie	3	7.4	305	23,782	3.6	859
Robert E Morris						
83	3	0.0	290	15,699	4.2	652
91	3	2.5	305	17,786	3.8	677
David M Emig						
58	3	4.8	305	14,596	4.8	696
65	3	3.10	305	14,576	4.7	682
McRal Dairy Farm						
105	3	5.9	305	18,063	3.9	705
Dputy37	3	3.9	305	18,627	3.6	664
Dputy58	3	3.7	305	18,485	4.5	824
212	3	3.2	305	18,217	4.0	735
356	3	2.0	305	19,776	3.6	718
358	3	2.5	305	19,175	4.4	845
William Ruppert						
Linda	3	6.2	305	16,100	4.0	643
Starmae	3	5.2	305	18,428	3.9	725
Eisenhart Bros						
271	3	6.0	305	20,299	4.2	859
Wayne E Myers						
Maple	3	4.6	305	22,961	3.6	820



Lebanon County DHIA Monthly Report

June Report

Rolling Herd Average

OWNER	BREED	NO. COWS	% DAYS IN MILK	LBS. MILK	LBS. FAT
Willow Maple Farm	4	43.7	91.2	21,586	775
Robert Martin	B3	50.9	87.4	19,004	724
Fort Zeller Farm	B3	50.4	86.3	19,213	717
Roy E Nolt	B3	55.8	86.7	19,494	715
Raymon & Marlin Getz	3	59.3	84.2	18,526	714
Hoover Farms	3	83.9	85.1	18,421	713
Marvin K Meyer & Sons	B3	100.4	91.2	18,362	711
M Luther Bennetch	G3	72.9	88.9	17,726	705
Roy H Weaver	3	55.1	87.6	19,603	704
Dale Hostetter & Sons	3	90.1	84.7	18,118	704
Conewago View Farms	B3	69.7	87.2	18,022	698
Donald G Hoffer	B3	43.3	86.6	18,533	697
Gary Lentz	3	70.5	85.6	19,032	695
Kirby L Horst	3	45.0	89.4	18,464	695
Gary Mase	B3	30.4	83.5	18,962	692
Eugene R Houser	3	31.5	88.2	17,825	691
Walter K Heisey	B3	57.0	88.9	19,007	687
Elvin Martin	B3	50.5	83.8	19,103	686
David Brandt	3	71.3	88.1	18,863	685
Arnold Acres	3	118.4	87.5	18,322	682
Mark H Bomberger & Son	B3	84.7	88.5	17,984	680
Mervin W Horst	3	41.0	88.1	18,167	678
Kenneth Mase	B3	95.9	86.0	17,504	676
Dennis Wampler	B3	86.0	88.5	18,298	675
Marlin M High	G3	41.8	85.3	18,794	674
Lentzdale Farms	3	77.5	87.3	17,985	670

Clarence B Martin	G3	31.6	87.8	18,131	667
Melvin M Nolt	B3	54.4	85.8	17,615	665
Wernerway Farms	B3	125.3	85.7	17,737	663
Glen R Martin	B3	24.2	86.9	18,923	663
Arthur R Krall & Son	3	64.0	86.1	17,988	661
Reuben C Martin	B3	68.4	85.4	18,075	660
Harvey T Bomgardner	3	94.3	85.3	17,640	659
Marlin D Heisey	B3	43.0	85.6	18,126	658
John Brubaker	B3	48.4	89.3	17,825	657
Robert B Smith	2	66.5	86.8	13,729	653
Richard & Ronald Shirk	3	78.1	89.0	16,722	652
Daniel B Shirk	3	37.7	88.3	18,137	651
Irvin Z Brubaker	B3	47.8	85.7	18,126	648
Leon H Kline	3	58.0	88.6	17,913	645
San Bo Holsteins	3	79.1	83.8	16,965	643
Lloyd Burkholder Jr	B3	53.8	84.0	18,083	643
Hershey Bare	3	87.9	87.0	16,685	643
David Eugene Reiff	3	48.2	85.7	17,928	641
Richard L Heilinger	B5	20.4	82.9	14,788	637
Hoover Farms	B3	57.9	84.6	17,300	637
Ferndale Farms	3	82.8	83.6	16,884	636
Phares Z Musser	3	87.4	85.7	16,077	635
Lloyd S Newswanger	B3	71.0	83.3	17,726	634
Enos N Leinbach	3	31.1	90.8	16,390	633
Richard L Heilinger	B3	20.2	85.3	16,981	633
Philhaven Farm	3	101.1	89.5	17,326	633
Hoover Farms No 2	B3	52.0	84.5	17,132	631
Vincent A Wagner	3	46.8	86.1	17,558	629
Lester Martin	B3	56.2	91.1	16,398	629
Isaac E Zimmerman	3	22.4	87.2	15,951	628
Eugene Martin	B3	88.2	85.6	16,651	627
Ernest P Detweiler	B3	55.6	82.8	18,220	627
Mark C Patches	B3	96.1	86.7	15,798	625
Sonnen Acres Farm #1	B3	87.6	84.2	16,974	624
Earl Smith	3	44.1	87.1	16,240	623
Twin Maple Farm	B3	38.9	87.2	16,478	623
Raymond K Martin	B3	50.5	84.9	17,494	619
Jay & Carol Hershey	3	83.3	34.3	17,260	617
Clyde E Deck	B3	70.5	86.2	16,360	617
Richard Batz	3	29.5	89.1	17,402	616
Ramona Holsteins	3	71.4	83.8	16,301	616
Leon M Burkholder	B3	45.5	89.7	16,371	614
Norman Kline	3	75.2	86.6	16,207	614
David Weaver	B3	41.6	87.9	17,483	612
Walter M Martin	B3	49.2	83.2	16,990	611
Wilmer S Reiff	B3	62.1	87.2	17,307	609
David E Zimmerman	G3	49.6	87.0	18,913	607
Luke Wise	B3	41.6	87.1	17,025	606
Gerald W Martin	B3	50.0	88.8	17,205	606
Sonnen Acres	B3	126.9	83.0	16,441	605
Bucher Brothers	B3	41.2	81.2	17,416	601
Kenneth I Sellers	3	60.5	86.4	15,636	601

Personal Injury, Who Is Responsible?

Accidents can happen to anyone, anytime. When they happen on or off your property, you may be responsible. That's why you need the total protection of an Old Guard Mutual Insurance plan.



Old Guard
MUTUAL INSURANCE COMPANY
2929 Litz Pike • P.O. Box 3010
Lancaster Pennsylvania 17604
Phone (717) 569-5361

GEBHARD & CO.
7th & Chestnut Streets,
Lebanon, PA
717-274-3360

THOMAS M. LANDIS
R.D. #2, Sugarloaf, PA
717-384-4661

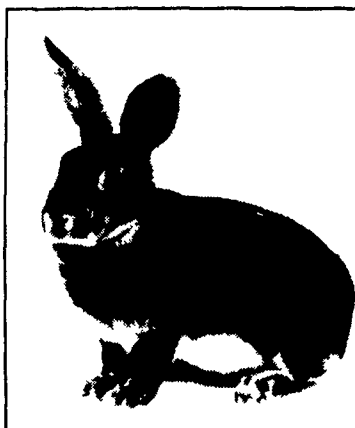
LAUREL INSURANCE MANAGEMENT, INC.
Carrolltown, PA
814-344-6506

DANNER'S, INC.
Biglerville, PA
717-259-7122

HELP WANTED

Earn \$10, \$15, \$20 thousand a year or more!
Raise REX RABBITS for the multi-million dollar fur industry.

Turn your unused space and spare time into profits.



• Excellent Investment • Exciting Program • Enormous Profits

To learn more without obligation, fill out and mail the coupon below today:

Yes! I am interested in making money by becoming a commercial Fur Rancher!

NAME _____

ADDRESS _____

City _____ State _____ Zip _____

Phone _____ Age _____

Married/Single _____

Occupation _____

Royal Rex Ranches, Inc.

RR1, Box 54
Equinunk, Pa.
18417
(717) 224-4580

Farm Drainage doesn't cost... It pays!

It pays with

- Improved Land Use and Efficiency
- Better Soil Conservation
- Deeper Root Development
- Increased Crop Yield
- Longer Growing Seasons
- Improved Plant Quality
- Better Livestock Farming



Our Machines Are Equipped With Laser Beam Control



COCALICO EQUIP. CO.
FARM DRAINAGE & EXCAVATING
RD #3, DENVER, PA 17517



PH: 215-267-3808
717-738-3794

ALARM SYSTEMS

New, Improved!

Warns against Power Failure, Fan Failure, Fire, Theft, Critical Temperatures, etc.
All solid state — Easy to Install



KALGLO

FOR TOTAL CONFINEMENT SWINE OR POULTRY UNITS!

Protect your Investment at Low Cost

COMPLETE SYSTEMS, EQUIPMENT, SALES, INSTALLATION, SERVICE FOR CATTLE, HOG, POULTRY AND GRAIN

AGRI-EQUIPMENT, INC.

2754 Creek Hill Road, Leola, PA 17540 (Lancaster County)
(717) 656-4151

STORE HOURS:
Mon.-Fri. 7:30 to 4:30;
Sat. 7:30 to 11:30
(Parts Only)