



Model 55M
List \$379

Special **\$275**

Windmill 55M BACK PACK MISTBLOWER
gives fast, even coverage
Sprays 25 ft up 3 gallon tankful covers
1 acre in 15 min

Super 88
List \$519

Special **\$350**

Windmill SUPER 88 MISTBLOWER
super power and 6 gallons capacity! Reaches 40 to 45 ft high Sprays twice as fast as model 55M Offers one pull starting with insta-start electronic ignition

SHIRK'S REPAIR SHOP

R.D. 2, Pool Road
Ephrata, PA 17522
717-859-2797

USED TRACTORS

- | | |
|------------------------------------|------------------------------|
| JD 4430 cab, air, Quad range sharp | Int. 1066 w/cab |
| JD 4430, power shift, roll guard | IH 966, cab and air |
| JD 4320, w/cab | IH 1026 hydro |
| JD 4230 cab, air, Quad range | IH 766 w/cab |
| JD 4520 w/cab & duals | IH 656 wide front |
| JD 4230 w/roll guard | IH 574 |
| JD 4020, power shift | IH 284 w/mower |
| JD 4020 Syncro w/cab | Ford 9600 w/cab & duals |
| JD 4010 | Ford 535 w/loader 1,000 hrs. |
| JD 2840 w/cab | Ford 5000 |
| JD 2640 | Ford 4000 |
| JD 2240 | Ford 3000 Diesel Sharp |
| JD 2630 diesel | Ford 2600 |
| JD 2020 diesel | Ford 2000 |
| JD 2510 | Ford 850 |
| JD 3020 Diesel, Syncro | AC 7030 |
| JD 950 1000 hrs. | AC XT 190 w/cab |
| Int. 986 cab & air | AC 210 diesel |
| Int. 886 cab & air | MF 1105 |
| | David Brown 1200 w/loader |

GRINDERS & MIXERS

- | | |
|----------|---------|
| Gehl 120 | Gehl 65 |
| Gehl 95 | IH 1150 |

USED COMBINES

- | | |
|----------------------------------|-------------------------------|
| JD 55 combine | NI 702 w/chopper & 3 row head |
| Oliver 525 w/2 heads, exc. cond. | JD 4400, 1979 model, sharp |
| NI 702 tractor w/710 combine | |

USED PLANTERS

- JD 7000 4 row liquid fertilizer

USED HARVESTERS

- | | |
|---|------------------|
| Fox 2 row snapper head | Fox 2000 |
| Used Moridge grain dryer | Fox Custom 90 |
| Late Model NI 702 uni tractor w/767 Super Chopper, 3 row head & pickup head | NH 770 w/2 heads |

MISCELLANEOUS

- | | |
|---|--|
| JD power till grain drill | Gehl 4400 skid steer loader |
| NH 278 baler | JD 1207 haybine |
| 1975 Chevy Tandem w/20 ft. grain body & hoist, PS, air brakes, Detroit 653 diesel | New Farmhand loaders for IH and JD tractors |
| Keewarne 14 ft. Rock Flex Disc w/26" blades | NI 2 row wide pull type corn picker w/12 roll husking bed, excellent |
| JD 7 btm., on land hitch, hydraulic reset plow | Brillion 15' roller harrow, like new |
| JD 30 ft. Implement Trailer | New & Used rotary hoe's |
| Large selection of smaller discs | Gehl 1500 Round Baler |
| Large selection of plows from 3 to 7 bottom | NH 469 9' Haybine |

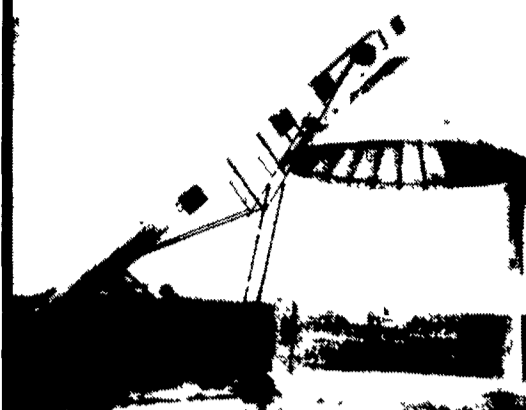
D & R EQUIPMENT INC.

Ringoes, New Jersey (201) 782-5082

WISCONSIN ENGINES Sales & Service



ADAPTABLE TO MOST APPLICATIONS



BEHLEN

The Quality King of Corn Crib

Every Behlen Crib is Hot-Dip Galvanized after welding completely covering all surfaces (including weld spots) with up to 6 times the amount of zinc found on ordinary cribs

ZIMMERMAN PORTABLE ELEVATORS

Will Carry Your Corn & Hay
32 ft \$1510
36 ft \$1740
Also Available Every 4 Ft (28 to 48')

BEHLEN CORN CRIBS SPECIAL

865 BU. \$795
1085 BU. \$875

USED EQUIPMENT

- Hesston PT10 Haybine, Nice \$2000 00
- NH 451 Mower \$1050 00
- NI 751 Hay Conditioner \$350 00
- NH 455 Mower \$950 00
- NI 752 Hay Conditioner \$625 00

TRACTORS

- 930 Case Standard w/Pulley \$2,050 00
- Super A w/cultivators
- Massey Harris Pony w/cultivators, & plow \$1,195 00
- 660 Int Diesel \$3250 00

SALES & SERVICE

MILLER'S REPAIR

1 Mile North of Bird-in-Hand
8 Miles East of Lancaster
RD1, Bird-in-Hand, PA Ph: 717-656-6109

BALDWIN ELECTRIC MOTOR DIVISION, INC.

REPAIR & REWIND - ALL BRANDS
AC & DC MOTORS
Call 717-354-5566
Call 717-354-4651

BALDOR ELECTRIC MOTORS

Warehouse and Factory Service
1/2 hp. thru 10 hp. 1 ph.
1/2 hp. thru 100 hp 3 ph.
FARM DUTY MOTORS IN STOCK
P O Box 232 Honey Brook PA 19344



JULY SPECIAL

New Model 892 NH Forage Harvester w/Metal Detector And Windrow Pickup
\$13,400

USED TRACTORS

- | | |
|-----------|------------------|
| AC D17 | AC D14 |
| JD 4040 | JD 2640 Like New |
| JD 3020 | JD 4040 w/Cab |
| AC D15 | IH 1566 w/Cab |
| Ford 2600 | JD 4640 |

USED COMBINES

- AC M2 4 Row Head 15' Platform
- AC F w/13' Platform
- AC K2 2 Row Corn Head 10' Platform
- AC N5 Rotary
- AC N6 Rotary

NEW & USED IMPLEMENTS

NH 1495 Self Propelled Haybine Like New, Ex. Cond. \$14,800

- NH 513 Spreader
- 2 Used Manure Spreaders
- 10 Used Square & Round Balers
- 4 Used Haybines
- 3 Used Plows

SPECIAL SAVINGS ON ALL NEW & USED FARM EQUIPMENT - PLUS FREE FINANCE UNTIL USE SEASON

UNIONTOWN FARM EQUIPMENT

Box 1030 Rt. 119N
Uniontown, PA 15401
Call 412-437-9851

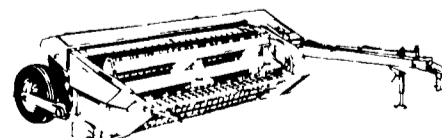
DEPENDABLE MOTOR CO.

East Main St., Honey Brook, Pa. 215-273-3131-273-3737

NEW EQUIPMENT SPECIALS

- | | |
|--|----------|
| NH #488 Haybine (Demo) | \$7100 |
| NH #311 Engine Baler, Hitch & Chute, Steel Wheels | \$8700 |
| NH #311 PTO Baler, hitch and chute | \$7120 |
| NH #256 Steel Tine Rake | \$2145 |
| NH #256 Rubber Tine Rake | \$2300 |
| NH #456 Mower | \$2470 |
| NH #30 Blower | \$2865 |
| NH #28 Blower | \$2915 |
| NH #718 Harvester (1 only) Rental | \$5600 |
| NH #782 Harvester, manual controls | \$9350 |
| NH #782 Harvester, electric controls | \$9890 |
| NH #770W Pickup Head | \$1925 |
| NH #8 Forage Box, 3 btr. and roof w/234 wagon and 13:50 tires, adjustable tongue | \$7240 |
| NH 363 Tank Spreader | \$4295 |
| NH 519 Spreader, 11:20 Tires | \$4725 |
| NH #425 Skid Loader 60" bucket, 10:50 Tires | \$12,675 |

ONE ONLY



PLUS MORE EQUIPMENT IN STOCK - CALL TODAY

SPECIAL DEALS ON THE ABOVE PLUS FREE FINANCE ON NEW & USED NEW HOLLAND HAY EQUIPMENT TILL SEPT. 1, 1984 & FORAGE EQUIPMENT TILL SEPT. 1, 1984 OR SPREADERS AND GRINDERS TILL OCT. 1, 1984

SPERRY NEW HOLLAND

DEPENDABLE IS MORE THAN OUR NAME