

Public Auction Register

Closing Date Monday 5:00 P.M.
of each week's publication

FRI JULY 27 7 PM
Public Auction of Bred and Open Gilts and Boars Located at the Lebanon Fairgrounds, Lebanon PA PA Duroc and Yorkshire Association, Owners Harry Bachman, Auctioneer

FRI JULY 27 5:30 PM
Gap Auction Antiques and Household Goods sold at every auction Located off Rt. 41, Lancaster Turkey Hill Minit Market, cross RR bridge, Ira Stoltzfus & Son, Auctioneers

FRI JULY 27 & SAT JULY 28 9 AM
Public Auction of Old and Rare Antiques, Household Goods, Car Guns and Real Estate Located midway between State College and Huntingdon PA on Rt. 26 at McAlevys Fort, PA Mrs Wm Miller and Pearl N Smith Estate Penn Central Nat'l Bank, Executor Mark Glick Auctioneer

FRI JULY 27 1:30 PM
Public Auction of State Graded Pigs Located at the Westminster Livestock Auction Westminster MD

FRI JULY 27 9 AM
Public Auction Liquidation Sale of Machine Shop Equipment & Tools Located at Keister's Middleburg Auction Sales, Inc., Rt. 522, 3 miles east of Middleburg 5 miles west of Selinsgrove Bryan D Imes Auctioneer

FRI JULY 27
Public Auction of Real Estate

Located in Juniata Co Long's Auctioneering Service

FRI JULY 27 9 AM
Public Auction of Machine Shop Equipment Located at Keister's Middleburg Auction Sales, Inc., Rt. 522, 3 miles east of Middleburg, PA, 5 miles west of Selinsgrove, PA Don & Walt Keister, Owners Ray Long & Dave Imes, Auctioneers

PUBLIC AUCTION TRACTORS — FARM MACHINERY MONDAY, JULY 30, 1984

11:00

Auction to be conducted on the premises located at Route 2, Hummelstown, Dauphin County, Penna. on the Franklin Wagner Jr. farm. From the north side of Hershey turn off Route 743 onto Sandbeach Road and continue north and turn right onto Level Road to first farm.

CASE 1410 WIDE FRONT DIESEL
with 18.4x34 rear rubber - 890 hours

AC D15 SERIES II gas wide
front tractor with 1820 hours

JD 7000 Conservation 4 row corn planter with liquid fertilizer; JD 35 harvester with 2 row corn head; JD pickup head; JD 1209 mower conditioner; Brillion 22 tooth field cultivator with Buster Bar; Ford 3-14" plow; NH 362 LH tank spreader; Dunham cultipacker; Pittsburgh 32 disc transport harrow; New Idea 5 tooth chisel plow; hay wagon and Massey Harris Super 26 self propelled combine (needs work).

BE PROMPT - NO SMALL ITEMS

Conditions by
FARMERS HOME ADMINISTRATION
Mike Orendo 717-274-2879

Harry H. Bachman - Auctioneer
717-867-1809 Lic. AU000033-L

TERMS: CASH - Checks by approval of FHA or auctioneer - Be Sure - Bring bank letter of credit.

ESTATE AUCTION

VALUABLE ANTIQUES; OVER 50 WALL & MANTLE CLOCKS; GUNS; MODEL STEAM ENGINES & WHISTLES; 1931 MODEL A FORD w/SLANT WINDOW; & OUTSTANDING SELECTION OF TOOLS & EQUIPMENT

OF THE LATE HAROLD CLEMENS

SATURDAY, AUGUST 4, 1984

9:00 A.M.

To be offered for sale within the FAWN GROVE COMMUNITY HALL BLDG. in FAWN GROVE, SOUTHERN YORK COUNTY, PENNA. (signs posted).

ANTIQUES

Early Hondorus Mahogany tilt top tea table with birdcage, cabriole legs ending in snake feet; Set of 4 Walnut Victorian cane seat chairs w/birds eye maple inlay; Walnut slant top desk; Cherry open end stand; Ornate cherry stand; 3 fancy Oak cane seat chairs; Singer Oak treadle sewing machine; walnut cane seat chair; Boston type rocker; Ornate single bed; Round Oak pedestal ext. table w/leaf; Large Walnut wall clock by self winding clock co. Sessions large regulator wall clock; many steeple mantle clocks; Ornate Oak and Walnut mantle clocks; Marble type mantle clocks; Fancy Walnut 8 day mantle clock; Round brass & glass wall clocks; Sessions mantle clock; Lge. Ogee Mahogany case mantle clocks; Antique mantle clock cases; Large Banjo mantle clock; and many other clocks of all descriptions and misc. clock parts; also repair items; Mossberg 16 gauge bolt action single bbl. gun; Marlin 22 lever action rifle; Remington 22 target master rifle model 510; Marlin 22 bolt action rifle; Stevens 22 rifle with hexagon bbl.; American bayonett; antique glassware & collectibles.

MODEL STEAM ENGINES TOOLS & EQUIPMENT

4 model steam engines in excellent condition; 2 outstanding brass steam engine whistles; walking beam model steam engine; solid brass cylinder; model train engines and parts; Sears 7 H.P. tractor lawn mower; B & D elect rottary lawn mower; air compressor; Sanjo kerosene heater; dolly; Emory wheel on stand; McGraw buffer; McGraw impact wrench; B & D radial arm saw; McGraw dill press; McGraw jig saw; Portable table saw; B & D sander; B & D grinder; Roudier; Dormeyer skill saws & sabre saw; car ramps; work benches; heat gun; tool boxes; model maker & Jewelers lathe w/attachments and misc. tools; There are hundreds of tools & equipment not mentioned all in "like new condition."

AUTOMOBILE — TRUCK

1931 Model A Ford 4 Door slant window sedan needs restoration; 1976 Chev Custom 6 cyl. Custom deluxe #10 pick up with topper, standard transmission. And other items too numerous to mention.

Lunch served; All items sold as is; Not responsible for accidents. Auctioneers Lic. #AU-000845-L & AU-001177-L.

TERMS: CASH

ARTHUR C. RUTLEDGE
Personnal Representative

AUCTIONEERS: Charles W. Shrodes
David W. Shrodes

Ph. (301) 692-5667
996-2424

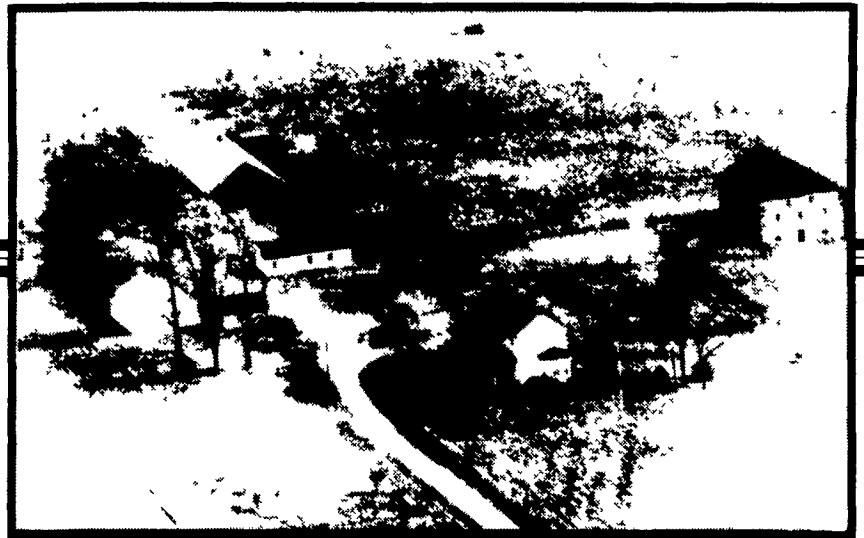
AUCTION

VALUABLE HISTORICAL REAL ESTATE

25 ACRES, + -, NEAR PRUCELLVILLE, VA

IF NOT SOLD BEFORE, WILL BE OFFERED

SATURDAY, AUGUST 4, 1984 AT 12:00 NOON



The undersigned will offer at public auction his farm located approximately 5 to 6 miles south of Purcellville, VA on Rt. 611. Take Rt. 690 south at the 7-11 Store at the corner of Rt. 7 & Rt. 690 (at the west end of town), go about 5 miles to Rt. 730, turn left about 2 blocks then turn left on Rt. 611, go about 1/2 mile to farm on right. Follow sale signs.

NOTICE: Owner, discontinuing farming and moving to a small home will offer to the highest bidder 25 acres, more or less, and improvements (with 35 additional acres available) all being a part of the original tract of 89 acres of land.

IMPROVEMENTS: This area of Virginia is rich in Early American History and one will feel this Heritage when they see this parcel of real estate. The brick master dwelling, Circa 1790, contains 7 large rooms, 2 full baths and oil fired baseboard 3 zone heat. All recently decorated in excellent taste to preserve its historical amenities along with today's way of life. Much of the original woodwork has been restored showing the beautiful wood grain and craftsmanship of years gone by. Also a modern eat in kitchen with a dishwasher & refrigerator. There are 3 working fire places, one being in a bed room. There are 3 bed rooms with closets; family room; living room; dining room; open stairway; beautiful hardwood floors; large open side porch; screened in rear porch; large concrete floor basement with washer & dryer & inside & outside entrances. There is a small log cabin which was originally the slave quarters. The original stone bank barn has a new roof, but the wooden stables and hay loft are Civil War period. Other outbuildings consist of a 200 ft. 2 story cattle barn, shop, garages and sheds.

This parcel of land is landscaped with an orchard; large trees for shade; shrubs; lawns; fences and a springfed pond. This real estate will meet the test of the most discriminating buyer.

FOR SHOWING & DETAILS CONTACT
LOUDOUN REALTY

RT. 2, BOX 276, PURCELLVILLE, VA. 22132
OR CALL (703) 338-7424

FARM MACHINERY, GRAIN TANKS & DRYERS,
TOOLS, LUMBER & SOME ANTIQUES

SELLING AT 9:30 A.M.

4 TRACTORS: Case 800 diesel row crop Case o matic tractor w/Eagle hitch; Oliver 77 diesel row crop tractor w/rear hyd. outlets; Farmall H tractor w/front end loader & side pulley & all new rubber; Farmall C tractor w/side pulley, 2x12 plows & cultivators & rotary hoe.

MISC. FARM MACHINERY: N.H. 479 haybine, cut less than 20,000 bales; N.H. 269 baler w/kicker; N.H. #56 hay rake; J.D. #2 hay fluffer; J.D. #40 COMBINE W/10 FT. GRAIN HEAD, & 2 ROW CORN HEAD; (2) kickbale wagons; (2) flat bed wagons (1) w/corn sides; J.D. FM 13x7 clutch lift grain drill; J.D. KBA 11 ft. tandem disc harrow; (1) 30 & (1) 36 tooth springtooth harrow; Case 3x16 trip-back plows; N.I. model 30A trailer field mower; WOODS 9 1/2 FT. ROTARY MOWER; Case 28 ft. all purpose elevator; SHAVER FRONT MOUNT post driver; tractor mounted PTO post hole digger; 3 pt. 7 ft. scraper blade; J.D. 290 (2) row corn planter; BRILLION 11 FT. DOUBLE CULTIPACKER; (2) 2 wheel rubber tired trailers; J.D., 44 ft. tubular type elevator; also 92 ft. & 84 ft. J.D. tubular type mow conveyor & motor to be sold in two sections; J.D. model L ground driven manure spreader; 275 gal. homemade trailer sprayer rig w/boom & pump; rubber tired wagon gear.

GRAIN STORAGE SYSTEM: Chief 7000 + - bus. metal grain bin w/bin sweeps, drying floor, fan & unloading auger; Chief 1200 + - bus. wet bin w/drying floor sweep, lg. gas dryer, grain agitator; Hutchison 53 ft. 6" PTO driven grain auger on wheels; Snowco 30 ft. 6" PTO driven grain auger on wheels; 20 ft. 6" transport grain auger w/elec. motor; 16 ft. 4" portable auger elevator without wheels; (2) SIDE DUMP GRAIN WAGONS.

ANTIQUES: Wicker basket 1 horse sleigh; 1 horse buggy (both in excellent cond.); Estey foot pedal organ, made in Brattleboro, also in very good cond.; 1 cyl. frick or IHC gas engine & water jack pump, old single trees; steel sleigh bells; wheat fan; etc...

2,500 + - BALES OF CLOVER/ORCHARD GRASS HAY
1951 CHEV. 1 1/2 TON STAKE BODY TRUCK
W/FACTORY REBUILT ENGINE, UNDER 10,000 MI. USE

MISC. TOOLS & EQUIP.: Onan PTO 12K Watt 120/240 volt generator on wheels; pr. 15.5-38 tractor tires, never mounted; 40 ton hyd. shop press, 11" metal lathe; 11" wood lathe; metal band saw; Craftsman wood plane; Lincoln 225 welder; log chains; tractor chains; 3 pt. boom; platform scales; other scales; ropes; axles; shovels; hand sprayer; fence tools & elec. fence equip.; hoes; elec. extension cords; wheelbarrow; bee hives & related equipment; 275 gal. fuel tanks w/pumps; mineral feeder; creep feeder; cattle oiler; cattle head gate; farm gates; metal fence posts; treated wood posts; rolls 48" woven wire; pipe wood clamps; 15 bales of baler twine; chain saw; come-along; sledges; hammers; Norge 12 cu. ft. double door refrigerator; portable hyd. engine hoist, like new; new Baldor spark free elec. motors, (2) 2HP, (3) 1 1/2 HP, (4) 1 HP, (3) 3/4 HP all in orig. cartons; vise; bench grinder; acetylene torch, gauges & hoses; Seigler oil stove; (1) 40' wood & (1) 40' alum. extension ladders; metal mortar box; lg. sel. of new nails; paint and many more items too numerous to mention.

AUCTIONEER'S NOTE: All the above equipment has not been used for the past 5 years, but stored in the dry and has been maintained and in outstanding condition. Most of the items look like new. The sale will start promptly on small items followed by antiques, machinery, grain system.

TERMS: Cash/Check on day of sale. Not responsible for accidents.



15 North Court Street/Frederick Maryland
301/663 1555
"Experience Doesn't Cost - It Pays"

Lunch Available

Owner,
CLARENCE J. MYERS
Rt. 2, Box 276
Purcellville, VA 22132