

Scientist studies nitrogen release

NEWARK, Del. — The increased use of reduced tillage systems is one of the most significant developments in modern agricultural management. Minimum or no-till production offers farmers many advantages, including greater fuel efficiency, less soil compaction and improved

soil moisture status.

But these systems aren't trouble free. A critical problem is achieving efficient fertilizer use.

Many reduced tillage systems combine winter annual cover crops and commercial fertilizers for large scale grain production. Research is badly needed on the

contribution of these covers to the fertility requirements of grain crops — particularly corn and soybeans. Organic nitrogen and other nutrients from cover crops can supplement commercial fertilizers, but more information is needed on how management practices like irrigation and tillage

affect the process of nutrient release from covers.

To answer some of these questions, Dr. J. Thomas Sims, a soil scientist at the University of Delaware Agricultural Experiment Station, is studying the use of the legume hairy vetch (*Vicia Velloso L.*) in irrigated corn production. Among other things,

he hopes to find out how environmental conditions and management practices affect the timing of nitrogen release from vetch, and how this relates to plant need. He also is investigating the use of vetch/commercial nitrogen fertilizer combinations in the production of irrigated corn.

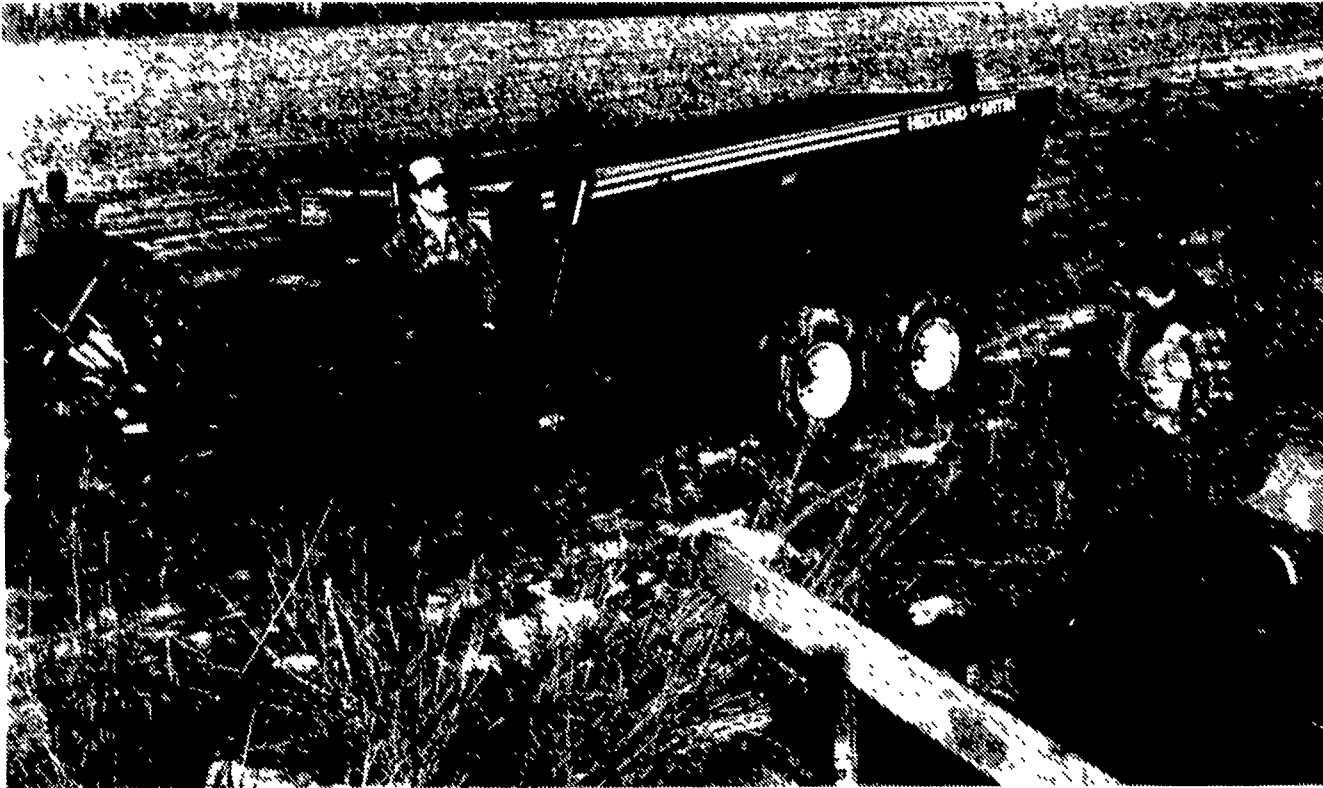
Fox named

WESTPORT, Ct. — Gregory J. Fox has been appointed Sunflower Plant Breeder by Stauffer Seeds, Inc. Fox will work out of the company's Fargo, N.D. office.

Before joining Stauffer Seeds, Fox was involved in sunflower breeding at the North Dakota State University, specializing in bird resistance and red dye extraction.

Fox earned a Ph.D. in plant breeding from Montana State University and a Master's Degree in Biology from Bowling Green State University.

Scavenger spreaders probably look like nothing you've ever seen before.



Most revolutionary ideas do.

If the Scavenger spreader looks slightly unconventional, there's a good reason. In fact, there are several good reasons.

For one thing, you need much more from your manure handling operation today than you did a few years ago. And Scavenger is designed for today's needs. It's more efficient. It handles the kinds of manure produced today—liquid, semi-solid, pen pack (even frozen)—all year round. Based on a whole new spreader technology, Scavenger simply does more, faster, and with less bother.

The big difference—a square-tube auger!

Unlike web chains or flails found on conventional spreaders, Scavenger's 10" x 10" square-tube auger sets

up a unique "pulse action" to thoroughly break up manure as it moves through the tank. The auger can also move hydraulically up and down to eliminate bridging—minimize wintertime freeze up.

Get spread patterns of up to 50 ft.!

Martin-design Variflo discharge system makes it possible. This ingenious hydraulic gate and high-rpm expeller reel combination lets you choose your optimum rate of application—from top dressing to heavy springtime spreading

Fewer moving parts—fewer breakdowns!

Let's face it — no one likes to handle manure. That's why it made sense to build a simple spreader. One

with no flails. No leaky endgates. No apron chains to break or freeze in winter months. Add to this sealed, welded Uni-body construction and you've got a unit built to take all the abuse you can dish out.

Stop by your local Hedlund/Martin dealer for a demonstration. You'll see why the beauty of the Scavenger spreader isn't so much in how it looks. It's in how it works.

For the name of the dealer nearest you, write Dept. H-1, Hedlund/Martin, Inc., 841 Kutztown Road, Myerstown, PA 17067



PH: 717-933-4151

CALL YOUR MARTIN DEALER FOR DETAILS

PENNSYLVANIA

Abraczinskas Farm Equipment
Inc.
Catawissa, PA
717-356-2323

B & R Farm Equipment
Beavertown, PA
717-658-7024

Norman D. Clark & Son Inc.
Honey Grove, PA
717-734-3682

Clugston Implement
Chambersburg, PA
717-263-4103

Dilt's Farm Equipment
Marion Center, PA
412-286-9606

Thomas Dunlap
Jersey Shore, PA
717-398-1391

Dunkle & Grieb
Center Hall, PA
814-364-9109
Mill Hall, PA
717-726-3115

Evergreen Tractor Co.
Lebanon, PA
717-272-4641

H.R. Gutshall & Sons
Carlisle, PA
717-249-2313
Loysville, PA
717-789-4343

A.L. Herr & Bro.
Quarryville, PA
717-786-3521

Hess Farm Equipment, Inc.
Canton, PA
717-673-5143

Histand Farm & Home Service
Rome, PA
717-744-2371

William Hobensack's Sons
1060 Greeley Ave.
Ivyland, PA
215-675-1610

R.S. Hollinger & Son
Mountville, PA
717-285-4538

C.B. Hooper & Son
Intercourse, PA
717-768-8231

Lone Maple Sales & Service Inc.
New Alexander, PA
412-668-7172

M & M Barn Sales
Westfield, PA
814-334-5504

Messick Farm Equip., Inc.
Elizabethtown, PA
717-367-1319

Red Wing Farm
Fleetwood, PA
215-944-0401

Tobias Equipment Co., Inc.
Halifax, PA
717-362-3132

W & J Dairy Sales
Oxford, PA
717-529-2569

Zimmerman Farm Service
Bethel, PA
717-933-4114

MARYLAND

H.B. Duval
Frederick, MD
301-662-1125

Enfield Equipment, Inc.
Whiteford, MD
301-452-5252

Farmer's Supply Co.
Westminster, MD
301-848-6776

DELAWARE

Delridge Supply, Inc.
Greenwood, DE
302-349-4327

NEW JERSEY

Jones Dairy Service
Medford, NJ
609-267-0198



Poultry Buildings

Barns - Disinfecting

Fly Spraying

Dairy Whitewashing

G & G HIGH PRESSURE

(AGRICULTURAL HIGH PRESSURE WASHING)

Barry Garber
367-3649

reliable thorough
largest equipment
no road charge

WHEAT WANTED!

EARLY CUT WHEAT
FOR
MANUFACTURING
OF
SNAVELY'S BEST NATURAL
ALL PURPOSE FLOUR

Light Soft & Lively Flour

For Better Baking
Cakes, Pies, Buns & Bread

Milled From Natural Wheat
Nothing Added

No Waiting —
Fast Unloading and Drying

SNAVELY'S MILL, INC.

333 Snavely Mill Rd.
Lititz, Pa. 17543 Ph: 717-626-6256

WE BUILD FOR THE DAIRY INDUSTRY