

## Angus II Plan to register 'Angus-based' cattle

ST. JOSEPH, Mo. — A new program to record and identify the genetics of cattle with an Angus base has been approved by the board of directors of the American Angus Association to begin October 1, according to Dick Spader, association executive vice president.

Named ANGUS II the scheme is designed as a genetic and performance identification program

to help commercial beef cattle producers develop efficient and more profitable beef production programs. It will also allow some American Angus Association members who are currently producing cattle that are a combination of registered Angus and another breed to record these animals with the American Angus Association. This means they will need to deal with only one breed

association and can take advantage of the Angus Association's computerized record keeping service, its complete performance records programs, and the normal one-week turn around time for processing registrations and transfers.

A Special ANGUS II performance certificate will be issued on eligible animals. In addition to including all available performance information on registered Angus and recorded ANGUS II animals, and space will be provided to list the breed composition of the animals (up to four breeds).

To register ANGUS II animals, owners must be members of the American Angus Association. Fees for ANGUS II services will be the same as for registered Angus. The Association will keep no blood typing information on ANGUS II animals and they will not be eligible to participate in Angus shows.

The program will be completely

separate from the registered Angus Herd Book. It will not include any type of "breeding up" provisions and no ANGUS II animals or their offspring will ever be eligible to be entered in the American Angus Association Herd Book.

To be eligible for ANGUS II, the first year a calf must be sired by a registered Angus bull or be out of a registered Angus cow. From there on, to be eligible, the calf must be sired by or out of a registered Angus or a recorded ANGUS II.

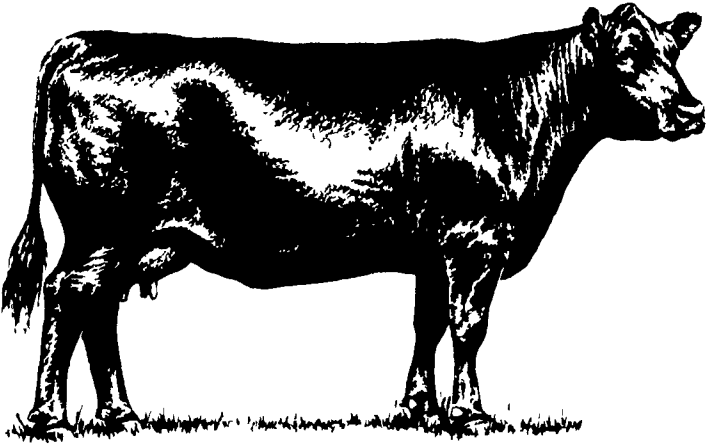
Also, during the first year of the program, breeders may record qualifying cows as ANGUS II by filling out the proper forms and paying the minimum registration fee of \$7 per animal. After the first year of operation, the recording fees for all ANGUS II and the ages for registration will be the same as for registered Angus cattle.

There will be one difference, only performance certificates will be issued on ANGUS II animals. Owners of purebred Angus have a

choice of receiving either a regular certificate or the performance registration certificate.

"The program is being offered as a service to American Angus Association members and their customers," explained Dick Spader, executive vice president. "Our members have told us that they have customers who demand Angus-base cattle for commercial breeding purposes, and the same customers want and need performance records and a pedigree that includes all the available information on these cattle. The ANGUS II program is designed to provide this information in the most useful and complete form possible. It will also give members great latitude in producing cattle to satisfy their commercial and customers' needs."

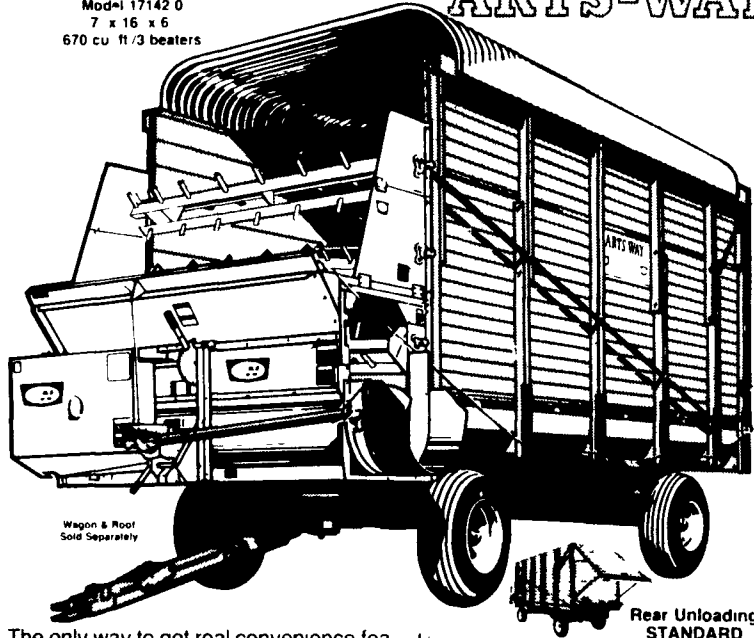
Complete rules for the ANGUS II program will be available in September, and the first recordings will be made in October, the beginning of the American Angus Association's 1985 fiscal year.



## Which Box Gives You More Great Features as Standard Equipment?

Mod-1 17142 0  
7 x 16 x 6  
670 cu ft / 3 beaters

ARTS-WAY



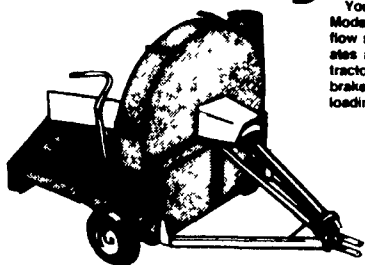
The only way to get real convenience features on most forage boxes is with extra-cost options. But Arts-Way builds them in for you as standard equipment.

Features like rear unloading. Variable-speed unloading with a 4-chain bed conveyor. A separate beater clutch. And a smooth, worm-gear drive that eliminates surge. Features that make this a one-man machine.



PLUS 9 flexible front conveyor chute extension. Rugged wood box that stands up to rough field use better than all-steel boxes. 4-chain bed conveyor and more — all STANDARD equipment.

## 154 Forage Blower



You can move up to 120 tons of corn silage an hour with our Model 154 Forage Blower. Its 54 fan and specially designed flow system keeps material moving evenly into the silo. Operates at 540 rpm with optional heavy-duty PTO shaft for large tractors. Big 12-inch auger has single-lever shutoff control with brake. Angled hopper makes it easy for wagons to reach unloading position.

CONTACT YOUR  
ARTS-WAY  
DEALER

ROME, PA  
Histsands Farm  
Centers  
717-744-2371

SHIPPENSBURG, PA  
Witmer Impl.  
717-532-6139

FREDERICK, MD  
Knott and Geisbert  
301-662-3800

AREA REPRESENTATIVE  
DAVID D. DIETRICH PHONE  
Rte. 5, Box 758 (703) 667-3787  
Winchester, VA 22601 (703) 667-0363

GREENWOOD, DE  
Delridge Supply, Inc  
302-349-4327

RISING SUN, MD  
Ben Haines  
301-658-5359

NEUHAUS'ES  
York, PA  
717-428-1953

WAYNESBORO, PA  
B Equipment, Inc  
717-762-3193

LEBANON, PA  
Evergreen Tractor Co.  
Inc.  
717-272-4641

AVAILABLE  
All Natural  
New York State Cheddar Cheese  
or higher Moisture Cheese  
Like Longhorn or Colby  
42 Lb. Blocks

Medium Sharp \*1.90 per Lb.  
Mild \*1.80 per Lb.

Prices Postpaid

Please send Check or Money Order to:  
ADIRONDACK CHEESE CO.  
RD 1 Box 74, Newport, New York 13416

MID-SOUTH TRACTOR  
PARTS, INC.

Rt 2 Box 316, Sikeston, MO 63801

Save  
50%



Buy  
Good  
Used  
Parts

Mid-West's Largest and  
Most Complete Inventory

CALL TOLL FREE  
Out of State: 1-800-325-7070  
Missouri Res: 1-800-392-0929

\*We Ship Anywhere

## Move silage... From silo to bunk reliably

**Patz**

A Patz feeding system is headed by the unique Patz cutter-and-claw gathering chain silo unloaders. Select the surface-drive 98B or the ring-drive RD-820. The Patz gathering chain with chain-saw action cuts out frozen and hard-packed silage for full-flow feeding.

Spring tension keeps the Patz power cutter tight to silo walls, even if walls are irregular.

Choose from three over-under chain conveyors with varied capacities and one-way or two-way delivery. Or, chose a versatile side-

by-side single chain Patz Material Mover.

The Patz Belt Feeder feeds quickly. The simplicity of design makes maintenance simple and keeps the price low. For other feeding situations, consider a Patz tapered-pan feeder or an in-bunk chain feeder.

All Patz feeding equipment offers a variety of optional accessories to meet your needs.

See your Patz dealer for details. He is experienced in installation, service and he has a parts supply on hand to keep you feeding.

### Contact Your Nearest Patz Dealer

ALEXANDRIA  
MAX ISENBERG  
814-669-4027

ELLIOTTSBURG  
CARL R. BAER  
717-582-2648

PIPERSVILLE  
MOYER  
FARM SERVICE  
215-766-8675

MARYLAND DEALERS  
HAGERSTOWN, MD  
TRI-STATE  
FARM AUTOMATION  
301-790-3698

BALLY  
LONGACRE  
ELECTRIC  
215-845-2261

FORKSVILLE  
DURWOOD J. WHITELEY  
717-924-3460

STONEBORO  
ELDER SALES  
& SERVICE  
412-376-3390  
376-3740

KENNEDYVILLE, MD  
PINDER SERVICE CO.  
301-348-5263

BERRYSBURG  
HOCH'S REPAIR  
CENTER  
717-362-8252

HAMBURG  
SHARTLESVILLE  
FARM SERVICE  
215-488-1025

QUARRYVILLE  
UNICORN FARM  
SERVICE  
JAMES E. LANDIS  
717-786-4158

NEW WINDSOR, MD  
ROOP FERTILIZER  
& CHEMICAL  
301-775-7678

CAMP HILL  
LLOYD SULTZBAUGH  
717-737-4554

LEBANON  
AUTOMATIC FARM  
SYSTEMS  
717-274-5333

TERRE HILL  
TERRE HILL  
SILO CO. INC.  
215-445-6736

DISTRICT SUPERVISOR  
Roy W. Thillberg  
216-549-5492