

Livestock market and auction news



Virginia Auction Summary

July 5-11

Report supplied by VDA
Total of Va. Weekly Feeder
Cattle Auction Receipts: 3,130.

TREND: Steady to \$3.00 higher.
South and Southwestern, Va.

Auction Summary
Smithfield, Southside
(Blackstone), Tri-State Narrows
Lynchburg, Hollins, Witheville

July 5-11

STEERS: 300-500 lbs. Medium 1
55.00-67.00; Large 1 59.00-66.50;
Small 1 50.00-60.00. 500-700 lbs.
Medium 1 54.00-66.00; Large 1
55.00-66.50; Small 1 51.00-58.00. 700-
1000 lbs. Medium 1 50.00-62.00;
Large 1 53.75-62.00; Small 1 50.25.

HEIFERS: 300-500 lbs. Medium
1 45.00-54.00; Large 1 45.00-52.00;
Small 1 40.00-50.00. 500-700 lbs.
Medium 1 42.00-52.00; Large 1
47.00-52.00; Small 1 40.00-47.00; 700-
900 lbs. Medium 1 41.50-52.00;
Large 1 42.00-52.00.

Northern Va.
Auction Summary

July 5-11

STEERS: 300-500 lbs. Medium 1

52.00-64.50; Large 1 54.00-66.00;
Small 1 48.00-53.00. 500-700 lbs.
Medium 1 50.00-62.50; Large 1
54.00-64.50; Small 1 53.50-59.00. 700-
1000 lbs. Medium 1 53.00-61.00;
Large 1 55.00-62.50.

HEIFERS: 300-500 lbs. Medium
1 40.00-53.00; Large 1 44.00-55.25;
Small 1 41.00-48.50. 500-700 lbs.
Medium 1 45.50-53.50; Large 1
43.00-55.00; Small 1 41.75-49.50. 700-
900 lbs. Medium 1 43.75-45.50;
Large 1 45.00-48.50.

Shenandoah Valley Livestock

Harrisonburg, Va.

Saturday, July 7

Report supplied by auction

FEEDER CATTLE: Trend- All
classes mostly steady. Steers:
M&L-1 300-500 lbs. few 52.00-59.00;
500-700 lbs. few 52.50-53.50; 700-1000
lbs. few 47.50-52.25. S-1&M&L-2 300-
500 lbs. 52.50-57.00; 700-1000 lbs.
46.50.

FEEDER BULLS: M&L-1 300-
500 lbs. 47.50-55.00; 500-700 lbs. few
48.50. S-1&M&L-2 500-700 lbs. 42.50-
47.00; 700-1000 lbs. 44.50.

HEIFERS: M&L-1 300-500 lbs.
45.50-50.00; 500-700 lbs. 43.00-48.00;
700-800 lbs. few 43.75. S-1&M&L-2

300-500 47.50-48.50; 500-700 lbs.
49.50.

STOCK COWS: Beef 410.00-
535.00; Baby Calves 25.00-83.00,
mostly 40.00-75.00.

SLAUGHTER COWS: Trend-
Steady to \$1.00 lower. Utility &
Commercial 2-4 36.00-43.25;
Canner & Cutters 1-3 30.00-36.00.

SLAUGHTER BULLS: 1&2
42.50-52.00.

LAMBS: Trend- Slaughter
lambs higher; Feeder steady to
\$3.00 higher. High Choice & Prime
59.00; Choice 55.10; Feeder Lambs
Choice 43.50-48.50; Slaughter Ewes
11.25-16.25.

HOGS: US 1-3 200-240 lbs. 54.00;
Sows 1-3 46.00-49.00; Boars 33.50.

VEAL: Choice 55.00-63.00; Good
44.00-50.00.

Four States Livestock

Hagerstown, Md.

Wednesday, July 4

Report supplied by auction

SLAUGHTER: Steers- No dry
feds offered; Good 45.00-48.00;
Medium 41.00-44.00. Fed Heifers-
Choice 55.00-57.25; Good 50.00-
54.00; Medium 49.00 down. Cows-
\$1.00 lower. High Yield 42.00-44.00;
Average 38.00-41.00; Big Middle
35.00-37.00; Fatty Herf. 35.00-39.00;

Shelly 37.00 down. Fat Bulls-
Steady prices. Good 51.00-53.25;
Medium 46.00-50.00. Veal Calves-
\$2.00 to \$4.00 lower. Farm Calves
\$2.00 higher. Choice 75.00-80.00;
Good 65.00-74.00; Medium 55.00-
64.00; Farm Hfrs. 54.00-60.00;
Farm Bulls 85.00-94.00; Light &
Weak 44.00 down.

STOCKER: Steers 300-550 lbs.-
Steady prices. Good 52.00-56.00;
Medium 47.00-51.00; Culls 46.00
down. Steers 600-850 lbs.- Good
51.00-54.00; Medium 45.00-50.00.
Heifers- (All Weights)- Choice
51.00-56.00; Good 44.00-50.00;
Medium 37.00-43.00. Bulls- Good
50.00-54.00; Medium 45.00-49.00.
Springing Heifers- to 710.00. Pigs
Hd.- \$3.00 lower. 20-30 lbs. 18.00-
24.00; 40-60 lbs. 25.00-33.00. Shoats
by lb. 40.00-47.50. Slaughter Hogs-
\$1.00 higher. 215-235 lbs. 54.00-54.25.
Sows- 450-600 lbs. 43.00-45.25; 300-
400 lbs. 40.00-42.00.

Carlisle Livestock Auction

Carlisle, Pa.

Tuesday, July 10

Report supplied by auction

CATTLE: Strong demand for
Good and Choice cattle. Steers:
Active; 3.00 higher. Choice 65.00-
67.00; Good 58.00-63.00; Good

Holsteins 56.25-56.50; Medium 57.00
down. Heifers: 2.00 higher. Choice
60.25-62.25; Good 55.00-58.00;
Medium 54.00 down. Cows: Steady.
High Yield 42.50-45.75; Average
39.00-43.00; Big Middle 39.50-43.00;
Shelly 38.00 down. Fat Bulls: 2.00
higher. Good 50.25-53.25; Medium
43.50-49.50.

FEEDER CATTLE: Steers:
(300-550 lbs.) 2.00 higher. Choice
59.00-62.00; Good 53.00-58.00;
Medium 52.00 down. Steers: (600-
850 lbs.) Medium to Good 47.00-
53.00. Heifers (all weights): Good
46.00-47.00; Medium 44.00 down.
Bulls (all weights) Choice couple
57.00.

VEAL CALVES: Weak - in line
with weak national market. Good
55.00-65.00; Medium 45.00-55.00;
Light/weak 45.00 down. Farm
Bulls- 60.00-65.00. Farm Heifers-
60.00-67.00.

HOGS: Barrows & Gilts very
active, 2.00 higher; 210-250 lbs.
56.10-58.10; over 260 lbs. 55.00-
56.35; under 210 lbs. 53.60.

SOWS: 2.00 to 3.00 higher. Over
450 lb. 43.75-46.25; under 450 40.75-
44.50. Boars- Heavy 35.50-38.00;
Light 44.50-53.00.

FEEDER PIGS (by the head)
3.00 higher (20-25 lbs. 23.00-26.00
hd.) (30-40 lbs. 23.00-29.00 hd.) (50-
60 lbs. 33.00-44.00 hd.).

SHEEP: Lambs- Good 50.00-
55.00; Medium 44.00-49.00.

EWES: 8.00-12.00 lb.

GOATS: (Lg) 40.00-53.00 (hd)
Sm./Med 9.00-29.00 (hd).

Sale every Tues. evening 7:00
P.M. for livestock.

ATTENTION HOG SHIPPERS!

Vintage Sales Stables, Inc. needs
1000 to 1100 hogs to fill the orders of
nine packers. These packers are
paying top market prices during our
Saturday morning auction.

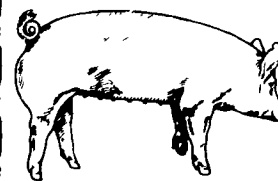
★ Auction Begins at 9:00 AM
Every Saturday

★ Commission Only \$1.70 Per Head

VINTAGE SALES STABLES, INC.

Box 100, Paradise, PA 17562
Contact L. Robert Frame, Manager, For Details

Main Office - 717-442-4181 or
717-768-8204
Home: 215-458-8518



**EMERY'S
BUYING
STATION**

**OPEN TO RECEIVE
YOUR MARKET HOGS**

**AT THE GREEN DRAGON MARKET
RD 4, EPHRATA, PA 17522
1 MILE NORTH OF EPHRATA
ON NORTH STATE STREET.**

**HOURS: MONDAY, TUESDAY, and
WEDNESDAY 6:00 A.M. to 11:30 A.M.
215-458-5677 Residence
717-733-9648 Office**

**YOU ARE PAID FOR YOUR
HOGS IMMEDIATELY**

Ken & Lois Emery, Proprietors



**GWALTNEY of
SMITHSFIELD, LTD.**

We will receive
your market hogs

**Mondays, Wednesdays,
Thursdays & Fridays**

**Note Our New summer Hours
6:00 A.M. to 12 Noon**

Located at the Vintage Sales
Stables, Paradise, PA

You will be paid immediately.

No commission or
yard fees deducted.

Reduced waiting time.

Premium prices are paid
for extra fancy hogs.

For information Call

**Ed Herrman or
Charley Kauffman
717-442-4742
or 717-442-4181**