

Corn conference opens July 29

INDIANAPOLIS, In. — Japanese Ambassador Yoshio Okawara will lead off a panel of speakers from around the world during this nation's first International Corn Conference here July 31 as a major part of the 26th annual convention of the National Corn Growers Association (NCGA), according to NCGA President John Stevenson of Ohio.

"The Association is on record in support of a market oriented farm economy," Stevenson noted, "so we decided that members needed to hear directly from leaders representing our best customers, as well as those who compete

strongly with us for these foreign sales."

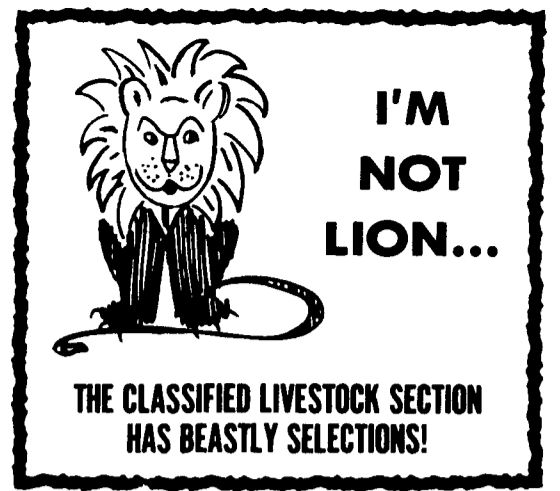
"Only through maintaining and increasing present sales overseas and developing new markets can we hope to return profitability to corn production," Stevenson said.

Others on the International Corn Conference program include Sir Roy Denman, head of the Delegation of the Commission of the European Communities; Dr. David Lacroze, former chairman of the Argentine Grain Board; and Albert V. Melnikov, acting Soviet trade representative to the United States.

President Ronald Reagan has been invited to keynote the Conference at the noon luncheon that day.

The NCGA convention gets

underway on July 29 with a delegate session and the grand opening of Corn Growers EXPO; continues July 30 with general sessions featuring prominent economists; agricultural production, marketing and financial specialists; and state and national political leaders; the International Corn Conference is July 31; and the convention concludes August 1 with the final delegate session and a meeting of the NCGA board of directors to elect officers for the coming year.



Tobacco supports reported

WASHINGTON, D.C. — The U.S. Department of Agriculture has issued the 1984-crop price support levels for burley and six other kinds of tobacco.

Everett Bank, administrator of USDA's Agricultural Stabilization and Conservation Service, said the price support level for Puerto Rican cigar filler tobacco was lowered from 90.9 cents per pound to 74 cents per pound, but that burley and five other kinds are unchanged from 1982 and 1983 levels.

The levels for the 1984-crop tobaccos are as follows:

Burley (type 31) — \$1.751.

Fire-cured (type 21) — \$1.188.

Fire-cured (types 22-23) — \$1.23.

Dark air-cured (types 35-36) — \$1.057.

Sun-cured (type 37) — \$1.094.

Cigar binder & filler (types 42-44, 53-55) — \$0.907.

Puerto Rican Cigar filler (type 46) — \$0.74.

Current legislation requires that price supports be made available for the kinds of tobacco for which producers have approved marketing quotas.

The Dairy and Tobacco Adjustment Act of 1983 requires that the 1984-crop support levels for these seven kinds of tobacco be set so as to not narrow their normal differentials from flue-cured tobacco, said Rank. That law also set the 1984-crop support level for flue-cured tobacco at its 1982 and 1983 level of \$1.699 per pound. USDA announced the flue-cured tobacco price support level April 20.

The law permits USDA to adjust the price support for certain kinds of tobacco after considering cost of production and supply-demand conditions.

Rank said supplies of burley and Puerto Rican cigar filler tobaccos are excessive and the 1983 support levels exceed estimates of cost of production.

WE NEED MILK!

Lehigh Valley Farmers

Come Grow With Us

860 Allentown Rd.
Lansdale, Pa. 19446
(215) 855-0210

Membership Benefits Include:

20¢ - Quality Bonus

2¢ - Premium

70% - Base for New Order 4 Members
Patronage Dividends
Blue Cross/Blue Shield Plans

WE OFFER A GUARANTEED MARKET FOR ALL YOUR MILK

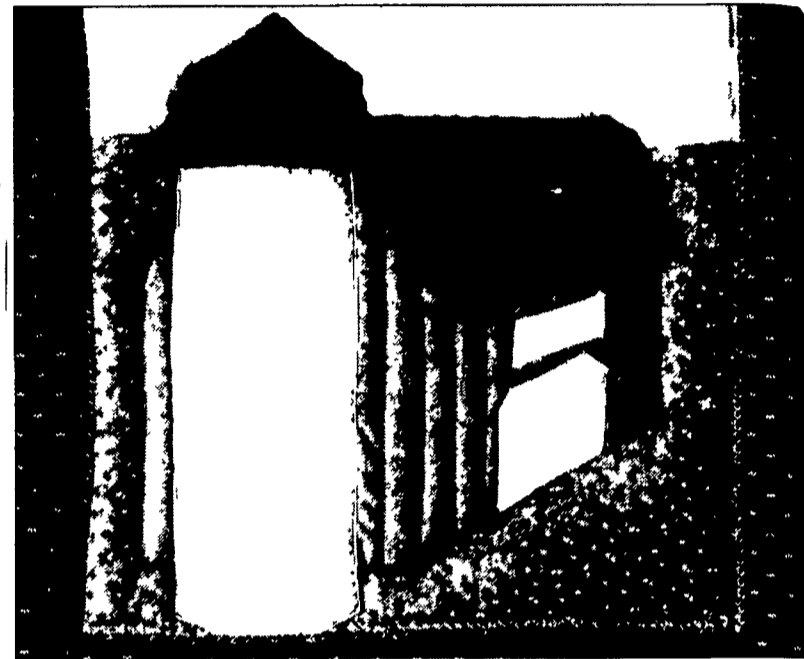
Call New Membership Manager

Max O. Sumser

At home - Pa. (717) 334-8900 or
Call the Office Toll Free

from Pa.
(800) 322-9254

from Md., Del., N.Y., N.J.
(800) 523-9336



Agway Insurance designs economical one-policy protection for your farm



Agway Farmowner's Insurance isn't just low-cost. It's also very simple.

Why? Because you deal with one agent, one policy, one premium. And you get all the protection you need for your house, farm buildings, livestock and machinery. Plus, Agway Insurance provides personal and farm liability protection, and broad optional coverages not described in typical policies.

Talk to someone who understands down-to-earth value and your country way of life. Call me for a free quote and full-color country quilt poster.



MATTHIAS INSURANCE AGENCY
RD 1, Box 268A,
Mertztown, PA 19539
(215) 682-4117

Insuring the country way of life

AGWAY INSURANCE GROUP
FARM • LIFE • HEALTH • HOME • AUTO

WHATEVER HERD YOU HAVE

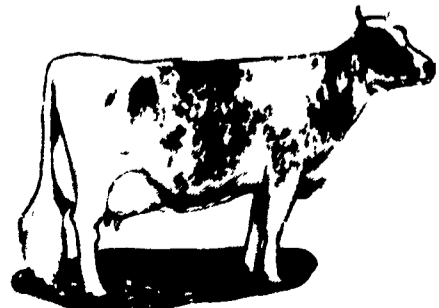
HOLSTEIN AYRSHIRE GUERNSEY JERSEY

FEED FLORIN

DAIRY FEEDS TO YOUR HERD TO MAKE MILK AND MONEY



For a healthy, highly productive herd, FLORIN Enriched Dairy Feeds are scientifically formulated, tested and proven. Feed it regularly, and see the results... more milk from cows, more money for you.



WOLGEMUTH BROS., INC.

Mount Joy, PA

PH: 717-653-1451

