

315 take annual Pa. Hort Tour in Adams

BY JUDY HULL

BIGLERVILLE — Having traveled through nearly 100 miles of orchards in two days, visitors taking part in the annual Pennsylvania Horticultural Association's summer tour concluded their activities June 26 at the Penn State Fruit Research Laboratory near here. Three hundred and fifteen individuals representing seven states registered to take the tour this year, the first time it has been in Adams County in nearly 20 years.

The tour began Monday, June 25, from the South Mountain Fairgrounds. Riding on buses, participants traveled 90 miles on the first day and viewed the fruit growing operations of 56 local growers. Adams County fruitgrowers served as guides, presenting detailed information on nearly every orchard operation which the buses passed.

Stops at pre-determined orchard sites were made throughout the

day allowing participants to view trickle irrigation systems, local nurseries, rootstocks, and fruit market operations, close-up. All visiting growers were also given a tour of the Knouse Foods plant in Orrtanna.

Monday evening the fairgrounds again served as a meeting site for the group. The Adams County Poultry Association provided a chicken barbeque dinner and Apple Queens were on hand to distribute juice. A panel composed of local growers and representatives from processing plants and research personnel answered questions.

During the session, growers discussed tree fruit varieties, trickle irrigation, rootstocks, planting techniques and 1984 production estimates for the county. Winter kill of fruit trees was also a topic for discussion. Growers differed in their opinions as to the amount of damage experienced this past year, but

Kenneth Hickey of the Fruit Research Lab said according to a statewide peach survey, winter injury is a major culprit causing loss of trees in the state.

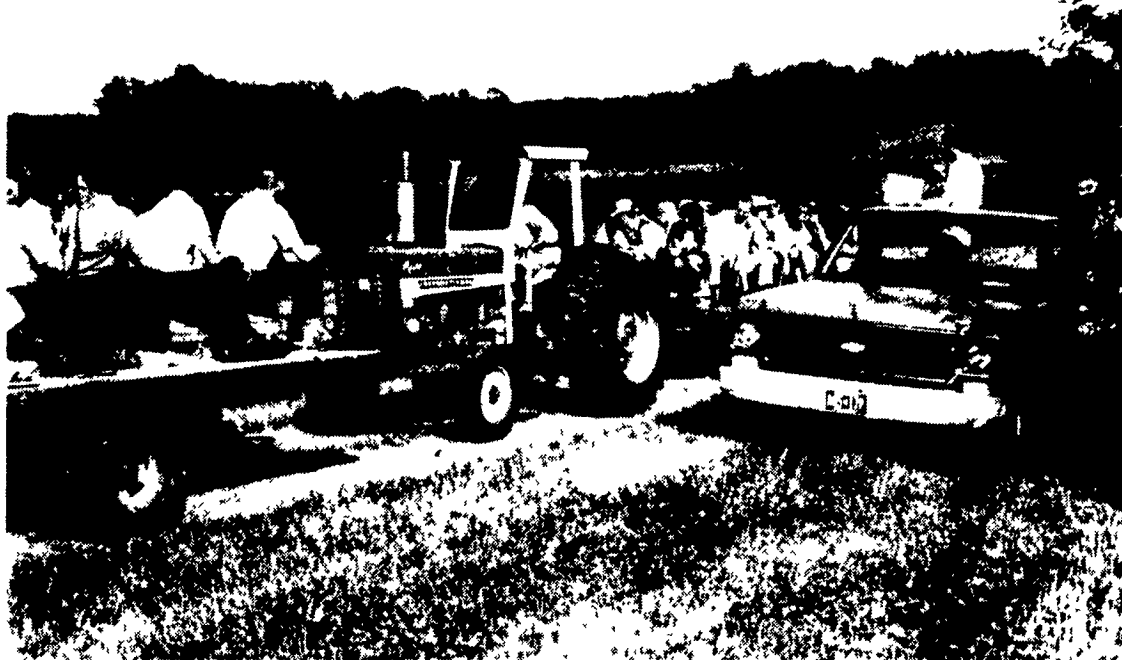
The second day of the tour began at the Biglerville lab with half of the visitors touring test plots at the lab, while the other half rode to a machinery demonstration. In the afternoon, the agenda was switched.

Test plots of apples, peaches, pears, cherries, grapes and blueberries were viewed with research personnel on hand to describe in detail the work being done. Administrative representatives from Penn State's College of Agriculture were also in attendance to meet with the visitors.

The women's auxiliary of the association had a separate schedule of events for part of the two-day tour which included a visit to the Gettysburg battlefield.



Franklin County apple queen Jill Edwards passes out sparkling apple cider to growers attending hort tour. At left is 1984 State Apple Queen Elizabeth Etter.



Personnel at the Penn State Fruit Research Lab describe studies to visiting growers.

NY dairymen reach settlement in Scheps case

SYRACUSE, N.Y. — Nineteen Southern Tier New York area dairy farmers who belong to NEDCO's Penn York and Empire Keystone Milk Producers' Cooperatives, have reached settlement in a lawsuit with the New Jersey-based International Fidelity Insurance Company, which will pay the producers \$186,000 as a result of the bankruptcy of the Scheps Cheese Company, according to NEDCO General Manager Robert Forsythe.

The monies are being paid under a bond issued by the insurance company on behalf of Scheps as is

required by New York law.

The 19 producers were among many whose last milkchecks from Scheps bounced prior to the bankruptcy.

The insurance company filed suit in November of 1983, in New Jersey Federal Court against the farmers and the NY Commissioner of Agriculture, claiming it did not have to pay under the bond.

NEDCO Attorney David P. O'Hara filed a counter suit for the entire amount owed under the bond. The settlement is the entire amount certified by the NY Commissioner of Agriculture under the bond.

KEYSTONE STUD RAM & EWE SALE

NEW LOCATION!

CARLISLE FAIRGROUNDS
CARLISLE, PENNSYLVANIA

Sponsored by PA SHEEP & WOOL GROWERS

SHOW: FRIDAY - JULY 13th - 8:00 A.M.
SALE: SATURDAY - JULY 14th - 9:00 A.M.

SPECIAL HO-DOWN

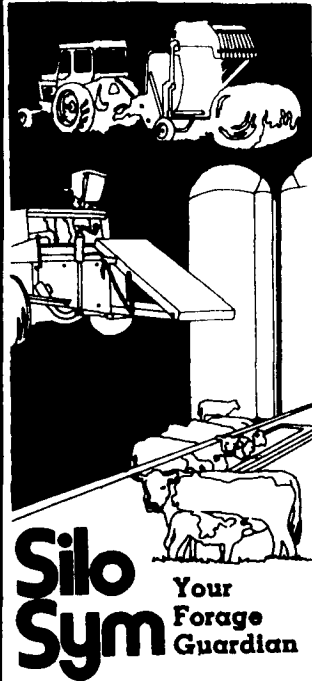
A Lamb Roast And Square Dance Catered by Bob Finkenbinder Will Be Held On Friday Evening Following The Show. An All-You-Can-Eat Dinner for \$7.00 Reserved Price. Please Send Your Reservation To BLM No Later Than July 8th.

FEATURING: Suffolks, Hampshires, Dorsets, Oxfords, Southdowns, Shropshires, Montadales, Corriedales, Columbias, Ramboullets, Merinos, Cheviots, Over 500 Entries!

NAME _____
ADDRESS _____

SEND TO: KEN BRUBAKER
Box 149
Westtown, PA 19395
Phone: 215/696-5483

Sale Managed by
**SHEEP BREEDER
SALE MANAGEMENT**
Box 796
Columbia, MO 65205



Why Farmers Like Silo Sym On Baled Hay:

allows you to bale tougher
a definite hedge against the weather
saves more leaves
higher protein content
enhances palatability of hay
easy to apply with Gandy Applicator

less problems with Gandy Applicator
non-toxic to livestock
non corrosive to the baler
it really works on square bales, round bales and stacks

Silo Sym can also be applied on haylage. For more information and special early order prices on Silo Sym and Gandy Applicators, write or call us collect.

Area Field Consultants

John Peachy
RD 2, Box 73
Mifflinburg, PA 17844
PH: 717-966-0465

Harold Eby
Rt 3, Box 159
Clearville, PA 15535
PH: 814-767-9651

Dan Martin
RD 1, Box 395-8, Black Creek Dev
East Earl, PA 17519
PH: 215-445-7161

Casey H. Smail
RD 4 Box 437
Blairville, PA 15717
PH: 412-459-5008

Regional Field Consultant

Leslie Yoder RD 2, Parksburg, PA 19365 PH: 215-857-3744



Symo-Life, Inc.
Home Office

Star Rt.-Millersburg, Ohio 44654
Telephone 215-893-2732