

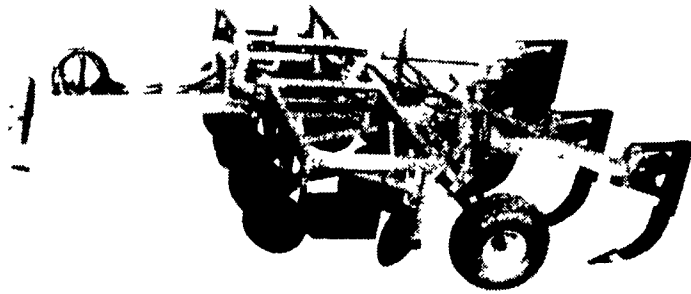
## DMI reports tillage tool

GOODFIELD, IL. — DMI, INC., Goodfield, IL, recently announced the introduction of a new Turbo-Tiger II tillage tool. According to the manufacturer, the Turbo-Tiger II is the only one pass conservation tillage tool for 4-wheel drive tractors that is designed agronomically from the ground up to meet the needs of all types of soils and field conditions.

Bob Wiegand, DMI marketing director, states: "The Turbo-Tiger II is equipped with independently, hydraulically controlled on-the-go blades and shanks. The blades are 24" widely spaced discs that cut and mix surface residue uniformly, permitting machine to follow combines. Residue is left long to create wicks and soil is left coarse to improve water absorption, minimize erosion and maximize decomposition... plus, help save the average 5 tons per acre soil loss."

Wiegand also said: "The Turbo-Tiger II's shanks have a unique patented Turbo-Point design with special wings that don't just cut a narrow path, but instead create a lifting and twisting action to the soil between shanks, even in wet conditions. Turbo-Points also shatter plow soles to reduce compaction and maximize air and water exchange... permitting water to move within the soil to reduce ponding during wet seasons and to retain moisture for crops during dry seasons. Reduced compaction and shattered plow soles allow roots to penetrate deeper to reach moisture and nutrients which greatly improves plant growth and yields... yield increases of up to 8 to 12 bushels per acre... in fact, some farmers have reported profit increases of up to \$54 per acre."

The DMI Turbo-Tiger II is available in a 5 shank, 12 disc model with a 12½ ft. working



This is DMI's new Turbo-Tiger II conservation tillage tool.

width; and a 7 shank, 16 disc model with a 17½ ft. working width. All machines' disc assemblies and shanks have auto-resets to minimize breakage. Also, a new, low-profile designed "A" frame evenly distributes stress over

entire unit and makes hookups and turning easy. Shanks and Turbo-Points are hard surfaced for extra hours of life.

For further information contact; DMI, INC., P.O. Box 65, Goodfield, IL 61742, phone 309/965-2233.

## Delaware Holstein

### Sale July 28

NEWARK, Del. — Delaware Holstein breeders will hold their annual auction sale Saturday, July 28, from 6 to 10 p.m. at the Delaware State Fair in Harrington.

The event is an opportunity for area milk producers to purchase outstanding dairy stock. It traditionally takes place the last day of the fair and is open to the public.

Though the sale is sponsored by the Delaware Holstein Association, anyone owning above-average Holstein cows, heifers or calves may participate. Since sale prices are directly related to the performance and constitutional strength of individual animals, their relatives, offspring, sires and

dams, this information is listed in the printed sale catalog.

For further information, contact sale chairperson Herman Cook of Newark 302-836-1732 or 834-0802 or Delaware extension dairy specialist, Dr. George Haenlein 302-451-2523.

## Red Power Days planned

CHICAGO, IL. — Farmers from across the country will be checking out International Harvester equipment this fall during the annual Red Power Progress Days sponsored by IH dealers.

Since 1978, IH Red Power Progress Days have brought farmers together to learn about equipment from product information specialists and through hands-on field demonstrations. Again this year, agricultural machinery will be displayed and

demonstrated.

Farmers will have the opportunity to view a special arena show, test drive equipment, enjoy refreshments and win door prizes.

The 1984 Red Power Progress Days will feature a sweepstakes for free IH plant tours. The sweepstakes will be open to persons 18 and older who are actively engaged in agriculture.

Participating dealers will advertise the dates and times for their local Red Power Progress Days.



Thousands of farmers across the country will have the opportunity to test drive the latest in farm equipment, review new products and ask questions of agricultural specialists during the 1984 International Harvester Red Power Progress Days.

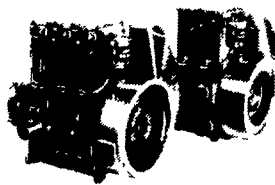
## SMUCKER'S SALES & SERVICE, INC.

RD #2, BOX 21  
NEW HOLLAND, PA 17557



12-36 bhp

**TS2 / TS3  
AIR  
COOLED  
DIESELS**



**FOR PROMPT SERVICE CALL  
717-354-4158 OR IF NO ANSWER  
CALL 717-354-4374**

## SOYBEAN ROASTING ON YOUR FARM

**DON'T WASTE IT - ROAST IT**

Roast Your Barley, Wheat & Oats

Lower your feed costs by feeding your own raised grains. Roasting your grains will increase digestability and remove moisture. Flat bitter tastes will turn to sweet pleasant flavors. Feed it to Hogs, Heifers, Dairy Cows and Horses.

CUSTOM GRAIN ROASTING DONE IN PA AND SURROUNDING STATES OR OWN YOUR OWN ROAST-A-MATIC GRAIN ROASTER

**DALE L. SCHNUPP**

RD 6, Lebanon, Pa. 17042

PH: 717-865-6611

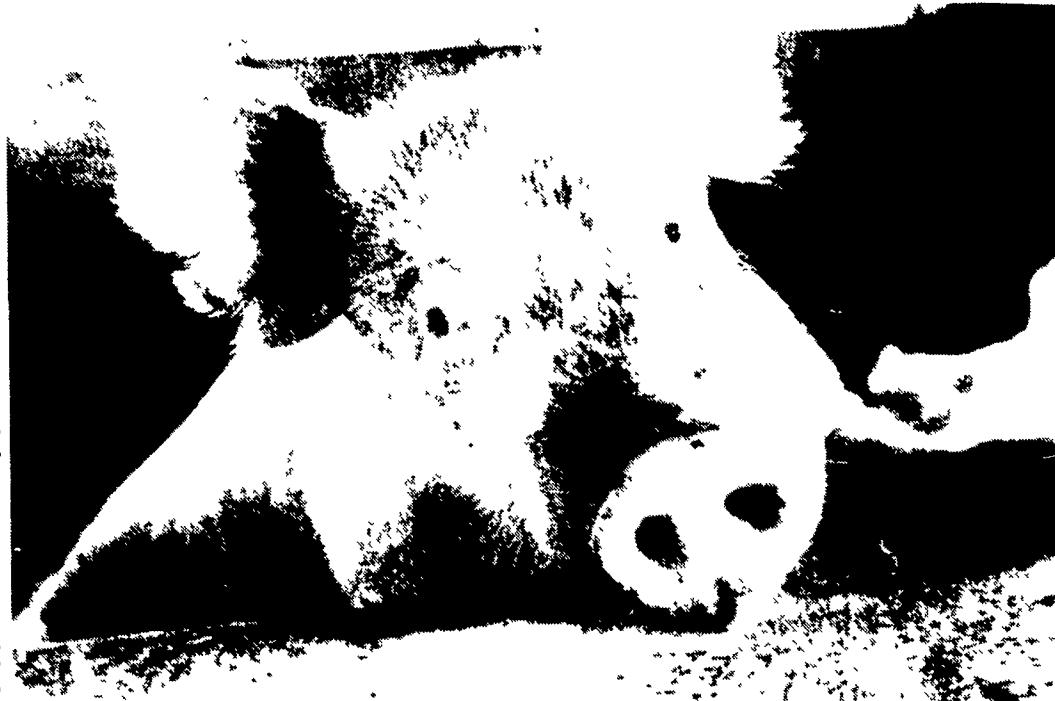
**PENN OHIO  
GRAIN ROASTING**  
RD 2, Box 91  
Enon Valley, PA 16120  
412-336-5443

**DAVID N. GROFF**  
RD 1 Box 506C  
Lewisburg, Pa. 17837  
717-966-3593



**ALLEN SUMMERS**  
RD 1  
Nottingham, Pa. 19362  
215-932-4761

## HOWDY MR. HOG FARMER...



Contact us at Hershey Equipment Co. about our hog equipment. It takes a lot of planning, knowledge and experience to develop a profitable confinement operation. We will assist you in the planning and recommend the most efficient arrangement of equipment. This service we provide will blend the building and equipment together to form a practical, labor saving, economical hog system for top quality hogs.

Give Me Your Attention Please!

**IT PAYS TO RAISE  
HOGS IN A SYSTEM  
DESIGNED BY  
HERSHEY  
EQUIPMENT CO.**

### Gestation Systems

reduce stress and the opportunity for fighting

### Farrowing Systems

are designed with both the sow and farmer in mind

### Finishing Systems

are designed using top quality penning and feeders

### Nursery Systems

include pig rearing cages or penning equipment

**HERSHEY EQUIPMENT SELLS THE BEST & SERVICES THE REST**



**H  
HERSHEY EQUIPMENT  
COMPANY, INC.**

SYCAMORE IND PARK  
255 PLANE TREE DRIVE  
LANCASTER, PA 17603  
(717) 393-5807

Route 30 West at  
the Centerville Exit

**DESIGNERS OF QUALITY SYSTEMS FOR POULTRY, SWINE & GRAIN HANDLING.**