



York County DHIA Monthly Report

May Report

The high herd was Stump Acres, R10, York with 93 Holstein cows producing 19,293 lbs milk and 791 lbs B.F. Second high was Lynn Wolf, Abbottstown, with 70 Holstein cows producing 20,507 lbs milk and 785 lbs B.F.

The high cow was Libby a 5-year-old Holstein from Stump Acres who produced in 305 days 21,236 lbs milk and 963 lbs B.F. Second high was Janie, a 4-year-old Holstein owned by Stump Acres who produced in 305 days 19,276 lbs milk and 927 lbs B.F.

OWNER	BREED	NO. COWS	% DAYS IN MILK	LBS. MILK	% FAT	LBS. FAT
Stump Acres		3	92.8	91.3	19,293	791
Lynn Wolf	B3	69.9	89.6	20,507	785	
Smysers Richlawn Fms		3	71.9	86.0	20,161	762
HS&RE Fetrow		3	80.5	86.5	19,190	734
Mc Ral Dairy Farm	B3	172.7	91.7	19,262	733	
Beshore Farms		3	44.4	88.6	20,122	725
Jim&Holly McCaffree		3	39.7	83.7	19,892	719
Sinking Spring Fmnc		3	66.1	85.0	18,781	708
Thomas A Boyer		3	42.5	84.4	19,135	706
The JE Baker Co	B3	42.9	85.9	19,164	705	
Wayne E Myers		3	47.5	84.9	18,539	704
Paul R King		3	52.9	87.1	17,397	690
David Stewart		3	113.3	90.6	18,947	687
RR&MR Stewart		3	59.0	88.2	19,070	674
Geo Knight		3	136.4	87.5	17,313	673
Rineway Dairy Farm	B3	91.6	87.1	17,393	671	
Wayne B Mummert	B3	71.8	86.0	18,015	665	
Rick L Cook	B3	64.0	87.1	17,195	660	
Fawn Meadow Holstein	B3	70.5	87.2	17,469	659	
B Robert Charles		3	47.4	85.4	18,015	646
Edwin L Calhoun	B3	44.2	89.5	17,581	646	
Earl Fuhrman		3	84.3	87.9	17,067	638
Walnut Hill Farm	B3	41.4	87.4	17,081	634	
Rodman C Thompson		3	69.3	84.4	16,677	634
Double D Farm	B3	98.2	86.1	16,649	633	
Melvin R Lehr	B3	52.7	83.1	16,739	631	
Mervin W Hertzler		2	63.5	87.7	12,993	630

Claude Holmes Jr	3	65.9	86.4	16,397	628
Smokey Hollow Farm	G3	38.4	89.7	17,787	625
William Ruppert	B3	53.8	86.1	17,717	621
Big T Holsteins	B3	88.1	84.7	17,070	618
Leroy Bupp	3	103.6	88.2	17,260	618
Ellis Crowl	B3	92.1	86.7	16,744	616
JH&MB Hushon	B3	89.5	90.4	16,071	614
William Myers	B3	43.8	86.9	16,692	613
David L&Chris Druck	B3	72.3	83.2	18,796	612
J Donnel Taylor	B3	114.7	86.9	16,891	609
Leaspring Farm	3	46.4	83.1	16,928	606
C Robert Kilgore	3	50.8	87.5	17,107	605
Walkers Farm	B3	69.5	87.9	16,644	605
Daryl L Bair	B3	37.3	84.3	17,235	599
Lonnie Robinson	3	42.4	90.5	15,531	597
Elvin G Molison	B3	147.7	80.9	15,832	597
Dennis J Myers	3	53.6	88.5	17,016	596
Kenneth L Rexroth	B3	136.6	88.8	15,406	588
Gum Tree Farm	3	43.2	90.5	16,701	587
Dan&Patti Hushon	B3	34.4	89.2	16,119	586
Eisenhart Bros	B3	84.8	89.0	15,590	585
John C Krone	B3	42.0	87.1	16,215	584
Rutter Bros	2	81.1	87.9	11,930	583
Phillip D Laughman	3	27.6	85.7	15,940	579
George Innerst&Sons	B3	69.9	86.9	15,719	577
Hidden Springs Farm	B8	101.2	85.0	14,780	576
Robert W Mays	B3	63.5	86.4	16,055	575
William H Fantom	B3	65.4	87.3	15,297	573
Leroy Hertzler	B3	32.1	84.9	14,966	573
Harold Brown	3	69.3	81.6	15,231	562
Robt Baumgardner Jr	B3	58.8	85.2	15,812	560
Albert Dehoff	3	153.3	87.2	15,358	559
R&M Farms	G3	43.5	84.7	14,343	558
Desota&Robt Burchett	B3	102.6	87.3	15,132	557
T Edwin Johnson	3	63.5	83.4	14,618	551
Eugene B Taylor	B3	42.3	88.1	14,905	550

* - Denotes 3x a day milking

OWNER	NAME OR NUMBER	BREED	AGE	DAYS IN MILK	LBS. MILK	% FAT	LBS. FAT
Sinking Spring Fmnc	Candid	3	6-0	303	18,897	4.4	831
	Nell	3	4-8	305	18,885	3.7	700
	Louann	3	3-8	305	20,876	4.3	907
Beshore Farms	Ausee	3	7-10	305	23,286	3.4	782
	Juniper	3	3-11	305	20,121	3.5	711
	Farah	3	3-5	305	20,716	3.6	743
Albert Dehoff	61R	3	1-10	305	17,014	4.0	681
Doug&Gene Kilgore	B-J	3	4-7	305	17,009	4.1	692
Thomas A Boyer	Esther	3	4-5	181	16,206	4.9	802
	Fancy	3	3-2	305	21,981	3.4	744
	Certie	3	1-11	305	18,151	4.1	745
Earl Fuhrman	Mystie	3	5-10	305	19,140	3.6	681

Lancaster Farming, Saturday, June 30, 1984—D19

HS&RE Fetrow	3	6-7	305	22,913	3.5	799	
Ruby	3	3-10	305	19,073	4.1	791	
Flora	3	3-0	288	18,075	3.9	699	
Blackie	3	3-0	288	18,075	3.9	699	
Stump Acres							
CJet	3	5-9	305	22,533	3.9	885	
Doris	3	5-2	305	19,173	4.2	807	
Libby	3	4-4	305	21,236	4.5	963	
Janie	3	4-3	305	19,276	4.8	927	
E-Jet	3	3-0	305	15,167	5.1	770	
RR&MR Stewart							
Pebbles	3	5-4	305	22,584	3.3	737	
Pasely	3	5-1	305	21,396	3.0	638	
Jennete	3	4-9	305	23,710	3.6	862	
Bow	3	4-6	305	21,982	3.4	737	
T Edwin Johnson							
Grace	3	4-7	305	17,039	4.4	748	
Leroy Bupp							
Ela	3	5-11	305	20,356	3.5	703	
Sue	3	4-8	305	25,763	3.3	840	
Valiant	3	2-0	305	18,240	4.0	727	
Hidden Springs Farm							
Nigal	3	4-5	305	19,479	3.3	652	
Dennis L McWilliams	7	3	6-2	305	21,163	3.1	663
Dennis J Myers	55	3	8-4	305	19,451	3.6	707
Titus Walker	2421	3	3-0	305	16,902	4.5	753
Paul R King							
Drift	3	7-1	305	24,844	3.2	804	
Tara	3	6-4	305	18,650	3.9	721	
Ziggles	3	4-0	305	19,831	3.5	687	
Wayne B Mummert	50	3	6-11	305	21,619	3.5	760
Dale&Darla Doll	April	3	5-9	305	20,158	3.7	739
Lynn Wolf	Jewel	3	4-1	305	23,186	3.6	836
Robert J Reheard	Penn	3	6-11	305	18,880	3.6	679
Jessie	3	3-1	305	19,514	3.5	679	
Wayshar Farm	61	3	7-3	305	17,297	4.1	717
Kenneth L Rexroth	19A	3	5-8	305	16,821	3.9	660
50	3	3-2	305	17,413	3.8	667	
111	3	3-1	305	21,338	3.6	772	
Rick L Cook	Teddy	3	5-10	305	19,991	3.9	786
J Donnell Taylor	Bambi	3	8-2	305	21,611	3.2	699
Connie	3	6-7	305	21,280	3.7	791	
Elvin G Molison	219	3	3-2	305	19,002	3.5	656
Daryl L Bair	Darlene	3	5-9	305	23,980	3.7	886
Smokey Hollow Farm	98	3	2-10	305	16,222	4.6	754
Mervin W Hertzler	Melida	2	6-0	305	14,614	4.6	665
Gary W Thoman	2	3	7-11	305	22,674	3.3	738
R&M Farms	84M	3	5-11	294	16,576	3.9	654
12	3	3-5	305	14,844	4.5	668	
Edwin L Calhoun	Becky	3	4-4	305	19,721	3.5	698

(Turn to Page D20)

YOU TEST THEIR FOOD - - WHY NOT THEIR WATER



Water with high levels of nitrate, sulfate, and bacteria can affect your herds HEALTH AND PRODUCTION

WE SPECIALIZE IN WATER TREATMENT ON DAIRY FARMS.

Our water conditioning methods reduce those robbing nitrates, sulfates, and bacteria to proper levels — resulting in a healthier herd with improved milk production and higher butterfat.

TREAT YOUR WATER SUPPLY - INCREASE YOUR PROFIT

Contact us for a test of your herd's water supply and information on our proven installations.

MARTIN WATER CONDITIONING

740 EAST LINCOLN AVE.
MYERSTOWN, PA 17067

PHONE 717-866-7555



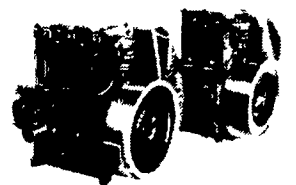
SMUCKER'S SALES & SERVICE, INC.

RD #2, BOX 21
NEW HOLLAND, PA 17557



12-36 bhp

TS2/TS3
AIR
COOLED
DIESELS



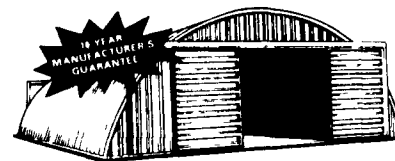
FOR PROMPT SERVICE CALL
717-354-4158 OR IF NO ANSWER
CALL 717-354-4374

SPECIAL - SPECIAL - SPECIAL PERMA BUILDINGS

YOUR CHOICE
LIMITED TIME ONLY
F.O.B.

40x80

40x80



OR



Perma Dome
Includes
1 14x20' Sliding Doors
1 service door
10 yr guarantee Available engineered stamp

Perma Web Straight Wall
Call For Special Prices
Don't Wait - Call Today
(215) 593-2511
Perma Building Systems
Box 35, Christiana, Pa 17509



Dealer Inquiries
Welcome

Name
Address
City State
Phone