

Livestock market and auction news

Eighty-Four Livestock

Eighty-Four, Pa.
Monday, June 25, 1984
Report Supplied by PDA

CATTLE 316. Compared with last Monday's market, slaughter cows 25 cents to mostly 50 cents higher. Few Good slaughter steers 56-60.00, Standard 49-55.00, Utility 45-49.75, Few Good slaughter heifers 53-56.00, Standard 48.25-53.50, Utility 46-49.00. Breaking Utility & Commercial slaughter cows 44.25-48.75, Couple to 49.50, Cutter & Boning Utility 40-45.00, Canner & Low Cutter 34-40.50, Shells down to 27.00. One Choice slaughter bullock at 53.25. Yield Grade #1 1100-2325 lbs. slaughter bulls 51-60.50, Yield Grade #2 1000-1600 lbs. 46-50.00.

FEEDER CATTLE. Medium Frame #1 feeder steers 400-600 lbs. 53-57.00; Medium Frame #1 350-700 lbs. feeder heifers 43-49.00; Medium Frame #1 400-760 lbs. 47.75-53.00.

CALVES 223. Vealers mostly steady. Choice Vealers 64-70.00, Good 56-65.00, Standard & Good 90-120 lbs. 50-57.00, 60-85 lbs. 45-52.00.

FARM CALVES. Holstein Bulls 90-125 lbs. 70-95.00.

HOGS 162. Barrows & gilts \$1.00 higher. US No. 1-2 210-250 lbs. barrows & gilts 51-52.00, No. 1-3

205-255 lbs. 50-51.20, No. 2-3 205-260 lbs. 48-49.25, few No. 1-3 180-195 lbs. 47-48.00. Sows: US No. 1-3 300-550 lbs. sows 42-44.00, No. 2-3 300-500 lbs. 40-42.50. Boars 26.50-35.00.

FEEDER PIGS 11. Few US No. 1-3 85 lbs. feeder pigs at 45.50 per head. One lot small No. 1-3 47 lbs. 37.50.

SHEEP 361. Spring slaughter lambs 2.00-3.00 lower. High Choice 65-110 lbs. 54.50-67.25, few 58.50, Choice 65-85 lbs. 49-54.75, Good 45-60 lbs. 40-46.00, few Utility 40-50 lbs. 35-39.00. Slaughter ewes 9.00-15.50. Goats 17: 10.00-35.00 per head.

Carlisle Livestock Auction

Carlisle, Pa.
Tuesday, June 26

Report supplied by auction

CATTLE: Steers: Choice none offered; Good 56.00-60.00; Medium 55.00 down. Heifers: Few Holsteins 42.00-47.00. Cows: Mostly steady. High Yield 44.00-46.00; Average 40.00-44.00; Big Middle 36.85-42.50; Fatty Herf. to 42.00; Shelly 37.00 down. Fat Bulls: Good 51.00-54.00; Medium 43.00-50.00.

FEEDER CATTLE: Few light by the head to 165.00. Steers (300-550 lb.): Good 51.50-54.00; (600-850 lbs. Medium 40.50-51.00. Heifers (all weights): Good 44.00-48.00;

Medium 35.00-43.00. Bulls (all weights): Medium 39.50-49.00.

VEAL CALVES: Choice 75.00-90.00; Good 60.00-75.00; Medium 50.00-60.00; Light/weak 50.00-down. Farm Bulls- 82.00-103.00. Farm Heifers- 64.00-74.00.

HOGS: Barrows & Gilts very active, 1.50 higher. 210-250 lbs. 52.50-54.75; over 260 lbs. 53.25-53.75; under 210 lbs. 50.00-51.00.

SOWS: Over 450 lbs. 37.00-41.75; under 450 lbs. 39.00-44.25. Boars: Heavy 36.25-37.50; Light 41.50-44.00.

FEEDER PIGS (by the hd): (15-20 lbs. 16.00-19.00) (30-40 lbs. 28.00-40.00) (45-70 lbs. 46.00-47.00). Shoats (by the lb.) to 47.00.

SHEEP: Lambs- Choice 58.00-63.00; Good 50.00-57.00; Medium 49.00 down. Ewes: 12.00-16.00 lb.

GOATS: Large 46.00-51.00 head; Sm/Med. 12.00-29.00 head.

Next State Graded Feeder Pig Sale will be Friday, July 13th, 1:30 p.m.

Sale every Tues. evening 7:00 p.m. Livestock; 5:15 p.m. Eggs and Rabbits.

Joliet Cattle

Thursday, June 28

CATTLE: Friday through Wednesday's salable receipts 2,000; 5 days last week 1,836; same

period a year ago 3227. Trading moderate Monday; moderately active Wednesday. Slaughter steers ended the week mostly steady compared with Wednesday of last week. Slaughter heifers were steady to weak.

SLAUGHTER STEERS: Choice few prime 3-4 1250-1350# 65.50-66.00 Monday; 1 load 67.00 Wednesday. Choice 2-4 1050-1300# 64.00-65.50, load 65.75. Mixed good and choice 2-3 1000-1200# 63.00-64.50. Choice 2-3 1400-1600# holsteins 56.50-57.50 Monday. Mixed good and choice 2-3 1200-1400# holstein 50.50-54.25 Wednesday.

SLAUGHTER HEIFERS: Choice 2-4 900-1050# 62.50-64.00 Monday; 62.50-63.50 Wednesday. Mixed good and choice 2-3 850-1000# 60.00-62.50. Good 2 750-950# 54.00-60.00.

Penns Valley Livestock

Centre Hall, Pa.
Tuesday, June 26

Report supplied by auction

Beef Cows: Utility and Commercial 43.10-46.25; Cutters 40.10-42.75; Canners 37.25-39.85; Shells 35.00.

Heifers: Good 53.50-57.35; Standard 48.75-51.00; Commercial 45.00-47.75.

Steers: Choice 55.25-57.00; Good 51.00-53.50; Standard 45.00-50.50.

Bulls: Good 48.50-53.00; Standard 44.00-47.50.

Feeder Cattle: 300-500 lbs. large frame 44.50-57.00; 500-700 lbs. large frame 41.00-48.00.

Veal Calves: Choice 84.00-91.00; Good 65.00-82.00; Standard 52.00-62.00; Utility 45.00-51.00.

Farm Calves: Bulls 80.00-100.00; Heifers 61.00-71.00.

Hogs: 48.50-52.25.

Sows: 35.00-37.75.

Boars: 24.00-32.50.

Lambs: 58.00-61.00.

Sheep: 7.00-15.00.

Goats per head: 15.00-24.00.

New Holland Horse

New Holland Sales Stables
Monday, June 25

Report supplied by auction
Reported receipts of 253 head of horses, mules, and ponies.
Market: steady.

LOCAL

Better horses 425.00-675.00, few registered horses 725.00-1050.00.

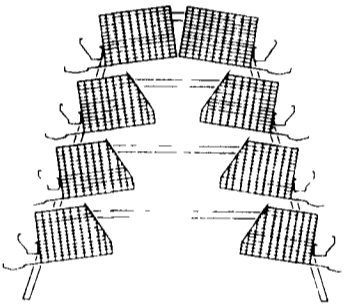
Driving horses 250.00-1075.00.

Riding horses 185.00-375.00.

Lightweight killers 175.00-275.00;

Heavyweight killers 300.00-375.00.

Mare Ponies 25.00-60.00; Colts 10.00-20.00; Gelding Ponies 25.00-60.00; Larger Ponies 75.00-150.00.



Big Dutchman. STAK-DECK™ CHIK-EZE™ Pullet Cage System

Automation and Control in Starting and Growing Pullets



Authorized
Big Dutchman. FAVORITE.
Distributor



HERSHEY EQUIPMENT COMPANY, INC.
Designers of Quality Systems for Poultry, Swine and Grain Handling

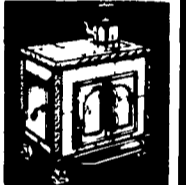
SYCAMORE IND PARK
-255 PLANE TREE DRIVE
LANCASTER, PA 17603
(717) 393-5807

Route 30 West
at the
Centerville Exit.

DUSSINGER'S QUALITY STOVES

Wood & Coal Stoves & Inserts

HearthStone SOAPSTONE STOVE



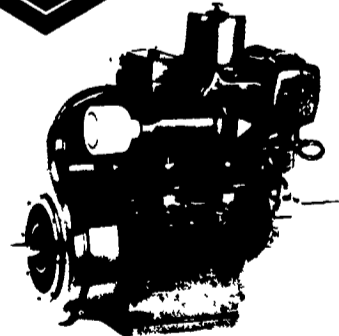
Glass enclosures by Schaefer

2533 Old Phila Pike, Rt 340
Smoketown PA
T T & F 10-B, W & S 10-5, M Appt
(717) 397-7539

Lancaster County's Only
Authorized HearthStone Dealer



PETER DIESELS



AIR-COOLED PH2
Water Cooled Version Available

- Hand Cranked Standard
- 24 Air & Water Cooled Models Available - 1 1/2 - 40 H.P.

**Diesels Our Speciality
Call For Used Diesels**

Let Us Know Your Service Problems
24 Hour Service Check Our Prices
AUTHORIZED PETER DISTRIBUTOR

HOOVER DIESEL SERVICE

Main Location
PH: 717-656-6133
2998 West Newport Rd
Ronks, PA 17572
2 1/2 miles East of Leola
Along Rt 772

Branch Location
PH: 717-786-2173
RD 3, Box 91A
Quarryville, PA 17566
2 miles West of
Georgetown on Furnace Rd.

DEALER INQUIRIES INVITED