

Franklin Co. DHIA

(Continued from Page D26)

| | | | | |
|-----------------------|----|-----|--------|-----|
| Culbertson Green Farm | B3 | 103 | 18 525 | 657 |
| Norlo Farm | 3 | 135 | 18 339 | 656 |
| Twin Maple Farms | B3 | 42 | 16 839 | 652 |

Denotes 3 times a day milking

| OWNER NAME OR NO | AGE AT CALVING | DAYS IN MILK | LBS MILK | LBS FAT | | |
|-------------------------|----------------|--------------|----------|---------|-----|------|
| Burk Lea Farms 83 | RH | 5 4 | 300 | 24 049 | 4 3 | 1030 |
| Fred E&Dale Rice 376 | RH | 4 8 | 305 | 24 639 | 4 1 | 1012 |
| Clinton Stahl | RH | 4 7 | 305 | 24 417 | 4 0 | 977 |
| Ray Wingert | RH | 5 2 | 305 | 22 179 | 4 2 | 940 |
| Robert E Harwood 94 | RH | 4 10 | 305 | 22 838 | 3 9 | 900 |
| Keeners Dairy 111 | RH | 5 1 | 305 | 21 775 | 4 1 | 890 |
| Oakleigh Farm Nannie | RH | 8 6 | 305 | 22 477 | 3 9 | 883 |
| Burk Lea Farms 4 | RH | 2 11 | 305 | 21 414 | 4 1 | 883 |
| Ray Wingert 44 | RH | 4 3 | 305 | 21 055 | 4 2 | 881 |
| Oakleigh Farm Trista | RH | 4 2 | 305 | 20 090 | 4 4 | 880 |
| Kenneth L Cautman Betty | GH | 3 1 | 305 | 17 202 | 5 1 | 874 |
| Myr Lea Farms Bertha | RH | 4 10 | 305 | 24 276 | 3 6 | 871 |
| Mountain Green Farm 27 | GH | 5 7 | 305 | 20,542 | 4 2 | 865 |
| Mountain Green Farm 64 | RH | 3 6 | 305 | 22,298 | 3 9 | 864 |
| Harold L Wenger Ronda | RH | 5 9 | 305 | 21,872 | 3 9 | 860 |
| Robert L Bailor Lady 34 | GH | 0 0 | 305 | 25 818 | 3 3 | 856 |
| HC Gabler 2015 | RH | 4 8 | 305 | 23 586 | 3 6 | 856 |

| | | | | | | |
|--------------------------|----|-----|-----|--------|-----|-----|
| R Cordell J McKenzie 135 | GH | 6 1 | 305 | 24 369 | 3 5 | 856 |
| Roy Kendig Bib 143 | RH | 5 5 | 305 | 18 787 | 4 5 | 852 |

CARROLL-BALTIMORE, MD DHIA April Report

Francis H Barnes Tops April DHIA

Francis H Barnes New Windsor had the herd with the highest average for the month of April according to figures just released by the Carroll Baltimore Dairy Herd Improvement Association

DHIA is a milk testing and record system used by the modern dairymen to help him to manage his business more efficiently. These records are also used in proving sires for artificial breeding and are used in research conducted by the USDA and the University of Maryland

During the month of May 112 dairymen in Carroll Baltimore Counties participated in this program. Listed below are the top ten herds based on their herd averages over the past year

| | | |
|---------------------------|--------|-----|
| Francis H Barnes 57 | 19 033 | 752 |
| Harry W Roach III 54 | 18 981 | 741 |
| Marlin Hoff 395 | 19 695 | 729 |
| Del Myr Farm 103 | 18,679 | 710 |
| Maple Lawn Farm, Inc 158 | 18 408 | 708 |
| Unicorn Associates Inc 93 | 17,377 | 697 |
| John H Jr & I G Hull 15 | 17 550 | 690 |
| F Lindsay Wilson 65 | 18 818 | 676 |
| Panora Acres Inc 116 | 17,990 | 668 |
| Flint Hill Farm 54 | 17,683 | 664 |

USDA announces

sale of corn

WASHINGTON, D.C. — The U.S. Department of Agriculture's Commodity Credit Corporation has sold the two million bushels of lower-grade corn offered for sale on May 21, Under Secretary of Agriculture Daniel G. Amstutz said recently.

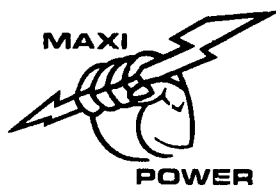
Amstutz said the corn was sold at prices ranging from \$3.71 to \$3.86 per bushel.

All of the corn sold is graded U.S. No. 3 yellow or lower and is stored in West Texas, Amstutz said.

He said 1.6 million bushels of the corn, which must be exported, will be shipped from West Coast ports. The remaining 400,000 bushels will be shipped from Gulf ports, he said.

"CCC will issue invitations soon for additional sales of its lower-grade corn for export," Amstutz said.

He said the sale of this lower-grade corn will not reduce CCC's stocks below the level required to meet the needs of USDA's emergency feed assistance program for livestock.

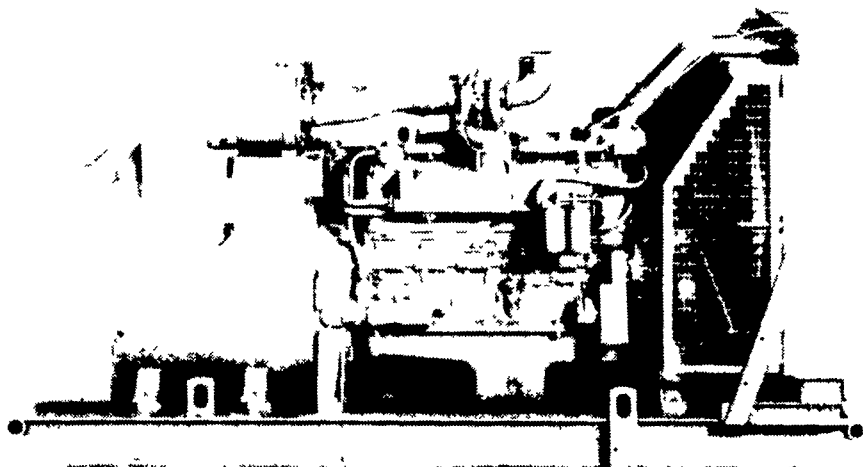


Generator Sets

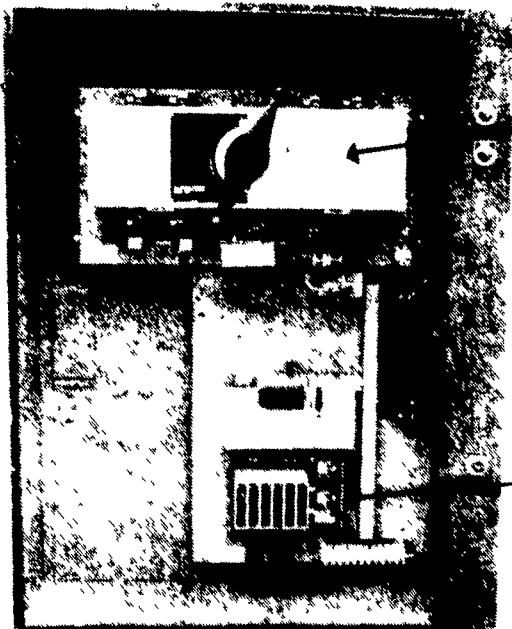
Manufactured for Agriculture

• Air Cooled Units: 2 - 20 KW

• Water Cooled Units: 7.5 - 1000 KW



Maxi-Power Generator has over 325 automatic units in South Eastern Pa. Why not check with the leader before buying!



Automatic Transfer

Solid State Control Logic

Automatic Transfer Switch

- ★ Sales
- ★ Service
- ★ Rental
- ★ Used Units
- ★ Trade In Allowances
- ★ Switch Gear

— THE ORIGINATOR OF AGRICULTURE SWITCH GEAR —

MAXI-POWER GENERATORS

330 FONDERWHITE RD., LEBANON, PA 17042

717 274-1483

★ RADIO DISPATCHED TRUCKS ★ 24 HOUR SERVICE

HEWEY WELDING

Box 2312, Rd 4, Lebanon, PA 17042

717-867-5222

ALUMINUM GRAIN BODIES & ALUMINUM REPAIRS



These ultra-light bodies are designed for strength through engineering, not strength with bulk. For example a 16' grain body with tailgate and 48" sides weighs only 1490 lbs. complete. We'll build you any length or any side height up to 60".

Also available

- ★ Double swinging hay hauling tailgate
- ★ Barn door type tailgate
- ★ Slide out cattle chutes
- ★ Diamond Flooring
- ★ Pull out panel tailgates
- ★ Any size grain chute

CONSTRUCTION

SPECIALISTS IN:

FARM BUILDINGS - EXCAVATING
MANURE PITS - SEPTIC TANKS



Excavating

- DRIVEWAY STONING
- SEPTIC TANK & DRAIN FIELDS
- SNOW REMOVAL IN SEASON
- MANURE PITS
- POND WORK • FIELD WORK

- FREE ESTIMATES -

— SPECIAL FARM PRICES —

DYNAMIC MASONRY CONTRACTORS

Gordonville, PA

Mike Fisher

Larry Herr

(717) 687-6801

After 6 PM, Call (717) 687-7217