

Livestock market and auction news



Virginia Auction Summary

June 7-13
Report supplied by VDA
 Total of Va. Weekly Feeder Cattle Auction Receipts: 3,389.
TREND: Steady to \$3.00 lower.
 Southwestern, Va.

Auction Summary
 June 7-13
STEERS: 300-500 lbs. Medium 1 57.00-65.00; Large 1 64.00-65.00; Small 1 50.00-60.00. 500-700 lbs. Medium 1 55.00-65.50; Large 1 58.00-63.00; Small 1 51.50-60.00. 700-1000 lbs. Medium 1 50.50-57.00; Large 1 54.25; Small 1 46.00.

HEIFERS: 300-500 lbs. Medium 1 44.00-56.00; Large 1 47.00-53.00; Small 1 40.00-49.00. 500-700 lbs. Medium 1 41.00-51.50; Large 1 46.00-53.00; Small 1 40.75-46.50; 700-900 lbs. Medium 1 44.00-46.00; Large 1 47.50.

Northern Va. Auction Summary
 June 7-13
STEERS: 300-500 lbs. Medium 1 55.00-66.00; Large 1 61.00-71.00; Small 1 50.00-61.50. 500-700 lbs. Medium 1 55.00-64.50; Large 1 60.25-65.00; Small 1 51.00-63.00. 700-1000 lbs. Medium 1 50.50-60.50; Large 1 55.50-60.25; Small 50.00-52.00.

HEIFERS: 300-500 lbs. Medium 1 42.00-52.00; Large 1 47.00-52.50; Small 1 45.00-50.00. 500-700 lbs. Medium 1 42.00-52.50; Large 1 45.50-53.00. 700-900 lbs. Medium 1 44.75-50.00; 43.50-47.50.

Southeast Va. Auction Summary
 June 7-13
HEIFERS: 300-500 lbs. Medium 1 46.00-49.00. 500-700 lbs. Medium 1 45.00-47.00.

Shenandoah Valley Livestock

Harrisonburg, Va.
 Saturday, June 9

Report supplied by auction

FEEDER CATTLE: Steers: M&L-1 300-500 lbs. 58.00-64.00; 500-700 lbs. 59.00-64.00; 700-1000 lbs. 55.00-60.00; Holstein 300-1000 42.00-48.75 S-1&M&L-2 300-500 lbs. 50.00-56.00; 500-700 lbs. 56.00-61.00; 700-1000 lbs. 49.00-56.00.

FEEDER BULLS: M&L-1 300-500 lbs. 52.00-55.00; 500-700 lbs. 50.00-55.00. S-1&M&L-2 300-500 lbs. 44.00-48.00; 500-700 lbs. 46.00-52.00.

HEIFERS: M&L-1 300-500 lbs. 46.00-52.00; 500-700 lbs. 45.00-50.00; 700-800 lbs. 46.00-49.00. S-1&M&L-2 300-500 lbs. 44.00-48.00; 500-700 lbs. 42.00-46.50.

STOCK COWS: Beef 440.00-540.00.

SLAUGHTER COWS: Utility & Commercial 2-4 38.00-43.75, 1 at 46.00; Canner & Cutters 1-3 28.00-35.75.

SLAUGHTER BULLS: 1&2 44.00-50.00.

LAMBS: High Choice & Prime 63.00; Choice 60.00; Feeder Lambs Choice 40.00-46.00; Slaughter Ewes 7.00-12.00.

HOGS: US 1-3 200-240 lbs. 48.00; Sows 1-3 38.00-44.50; Boars 28.00.

VEAL: Choice & Prime 72.00-80.00; Good 54.00-60.00.

SLAUGHTER CALVES: Good & Choice 48.00-56.00.

Four States Livestock

Hagerstown, Md.
 Wednesday, June 6

Report supplied by auction

SLAUGHTER: Fed Steers & Heifers- No Choice offered, steady prices; Good 56.00-60.00; Medium 55.00 down. Heifers- Good 50.00-55.00; Medium 49.00 down. Cows- \$1.00 lower. High Yield 43.00-45.25; Average 39.00-42.00; Big Middle

36.00-38.00; Fatty Herf. 35.00-39.00; Shelly 38.00 down. Fat Bulls- \$1.50 lower. Good 50.00-51.75; Medium 46.00-49.00. Veal Calves- Steady prices. Farm Calves 3.00 higher. Choice 80.00-86.00; Good 73.00-79.00; Medium 60.00-72.00; Farm Hfrs. 65.00-77.00; Farm Bulls 95.00-113.00; Light & Weak 53.00 down. Lambs- Steady prices. Choice 56.00-58.00; Good 52.00-55.00; Medium 45.00-51.00.

STOCKER: Steers 300-500 lbs.- Light run mostly steady to \$1.00 lower. Good 55.00-60.00; Medium 50.00-54.00; Culls 49.00 down. Steers 600-850 lbs.- Good 55.00-58.00; Medium 54.00 down. Heifers- (All Weights)- Good 45.00-50.00; Medium 38.00-44.00. Springing Heifers- to 760.00. Pigs Hd.- \$3.00 lower. 20-30 lbs. 14.00-25.00; 40-60 lbs. 26.00-38.50. Slaughter Hogs- \$2.00 higher. 225-240 lbs. 49.00-50.60; 200-220 lbs. 47.00-48.50. Sows- 500-650 41.50-44.50; 300-450 37.00-41.00. Bulls- Good 47.00-50.00; Medium 42.00-46.00.

Central U.S. Carlot

Beef Report
 Wednesday, June 13

Report supplied by USDA

Compared to Tuesday's 4:00 report: Steer and Heifer Carcasses steady. Demand light to moderate, trading and supplies moderate.

The gross boxed beef carcass cut-out value advanced \$17 to an estimated \$103.17 per cwt., 152 loads boxed cuts reported.

Sales reported on 60 loads of Steer and Heifer Carcasses.

STEER BEEF
 FOB Omaha Basis

32 Loads
 Choice 3 600-900 lbs. 99.00, steady; 600-700 lbs. 98.50.
 Choice 2 600-900 lbs. 99.50.
 Good 2-3 600-900 lbs. 93.00, steady.

Heifer Beef
 FOB Omaha Basis
 28 Loads
 Choice 3 550-700 lbs. 96.00, steady; 500-550 lbs. 92.00, steady; 400-500 lbs. 90.00, steady.
 Choice 4 500-700 lbs. 87.00, steady.
 Good 2-3 550-700 lbs. 91.00, steady.

Cow Carcasses
 FOB Amarillo Basis
 4 Loads
 Brkg Util 2-3 450&up lbs. 71.00 West.
 Bng Util 1-3 400&up lbs. 73.00 West.

Primal Beef Cuts
 5 Loads
 FOB Omaha Basis
 Good & Choice 2-3. Short Plates 57.00.

Boneless Processing Beef
 Beef Trimmings
 FOB Omaha Basis
 130 Loads
 90% Chem Lean Fresh 101.00-102.00.
 75% Chem Lean Fresh 81.00-84.00.
 50% Chem Lean Fresh 53.00-54.00, late mostly 53.00.
 FOB Amarillo Basis
 90% Chem Lean Fresh 101.00-102.00, mostly 102.50.
 90% Chem Lean Frozen 104.00.
 85% Chem Lean Fresh 95.50.
 50% Chem Lean Fresh 53.00-54.00.

Carlisle Livestock Auction

Carlisle, Pa.

Tuesday, June 12

Report supplied by auction

CATTLE: Steers: Good 57.00-62.00; Medium 57.00 down. Heifers: Medium 45.75-51.00. Cows: Strong demand; 2.00 higher. High Yield 45.00-47.50; Average 41.00-45.00; Big Middle 40.00-43.00; Shelly 39.00 down. Fat Bulls: 2.00 higher. Good 52.50-55.75; Medium 45.00-51.75.

FEEDER CATTLE: Very ac-

tive; Calves under 250 lbs. by the head to \$175. Steers (300-550 lb.)- 4.00 higher. Choice 64.00-71.00; Good 59.00-63.00; Medium 52.00-58.00; Culls 51.00 down. Steers (600-850 lb.)- Mostly steady. Good 54.00-58.00; Medium 53.00 down. Heifers (all weights) 2.00 higher. Choice 55.00-61.00; Good 49.00-54.00; Medium 38.50-48.00. Bulls (all weights)- Medium 43.00-51.00.

VEAL CALVES: Choice 80.00-101.00; Good 65.00-80.00; Medium 50.00-65.00; Light/weak 50.00-down. Farm Bulls- 100.00-116.00.

HOGS: Barrows & Gilts strong demand, 2.00 higher. 210-250 lbs. 50.50-53.10; over 260 lb. 47.75-50.25; under 210 44.50-47.00.

SOWS: Over 450 lb. 37.75-43.25; under 450 37.00-44.75. Boars 2.00 higher 32.00-42.00.

FEEDER PIGS (by the hd): 2.00-5.00 lower (Good run) (20-30 lbs. 20.00-26.00) (30-40 lbs. 26.00-32.50) (50-70 lbs. few to 45.00). Shoats (by the lb.) to 45.00.

SHEEP: Lambs- Large run, mostly steady to 1.00 lower. Choice 58.00-60.00; Medium to Good 44.00-56.00. Ewes- 18.00-28.00 lb.

GOATS: (Lg) 29.00-34.00 (hd); Sm./Med 10.00-26.00 (hd).

New Holland Horse

New Holland Sales Stables

Monday, June 11

Report supplied by auction

Reported receipts of 249 head of horses, mules, and ponies. Market: lower.

LOCAL

Better horses 425.00-625.00, few horses 650.00-880.00.

Driving horses 350.00-1100.00. Riding horses 250.00-375.00.

Lightweight killers 175.00-275.00; Heavyweight killers 300.00-360.00;

Mare ponies 35.00-75.00; Colts 10.00-20.00; Gelding ponies 35.00-75.00.

Larger ponies 125.00-150.00.

Seeking Profits In Commodities Trading?

- Hedging
- Speculating
- Managed Account

Call Forney Longenecker, Commodities Investment Executive, At (717) 295-8914

SHEARSON/AMERICAN EXPRESS, INC.
 29 E. King St.
 Lancaster, PA 17603



KING'S AUCTION, KIRKWOOD

Hay, Straw and Grain Auction Every EVERY TUESDAY

12:00

Located Rt. 472 5 miles south of Quarryville or 6 miles north of Oxford at Schaub's Auction House.

No out of state checks

ALL TRUCKERS AND FARMERS WELCOME

LOUIS LYONS & SON

Consign your cattle and hogs, feeder pigs & calves to Louis Lyons & Son. They offer choice service, excellent sorting & marketing of your livestock.

Charles Diller, Manager
 Phone 394-7915
 Burnell Siegrist - Buyer & Seller
 Phone 626-8653

Experienced Personnel

Immediate Weighing

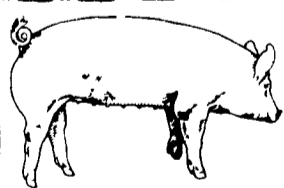
VINTAGE SALES STABLES, INC.

AUCTIONS

Every Thursday at 1 P.M.
 HAY, STRAW & GRAIN

Sold on Commission
 10 miles east of Lancaster, 8 miles west of Coatesville on Rt. 30, Paradise, PA.

L. Robert Frame, Manager
 For information
 717-442-4181
 215-458-8518



EMERY'S BUYING STATION

OPEN TO RECEIVE YOUR MARKET HOGS

AT THE GREEN DRAGON MARKET
 RD 4, EPHRATA, PA 17522
 1 MILE NORTH OF EPHRATA ON NORTH STATE STREET.

HOURS: MONDAY, TUESDAY, and WEDNESDAY 6:00 A.M. to 11:30 A.M.
 215-458-5677 Residence
 717-733-9648 Office

We Will Be Closed Wednesday, July 4th

YOU ARE PAID FOR YOUR HOGS IMMEDIATELY

Ken & Lois Emery, Proprietors



THE HOT SUMMER IS HERE!



FOR FARM-HOME-INDUSTRY



JUNE DAIRY MONTH SPECIAL
 10% OFF REG. PRICE ON
 All Fans In This Ad - (Packed in Cartons)



PAUL B. ZIMMERMAN, INC.

Hardware • Farm Supplies
 Custom Manufacturing • Crane Service
 Box 128, R.D. #4, Lititz, PA 17543
 Wood Corner Rd., 1 Mile West of Ephrata
 Phone: 717-738-1121

WE SHIP UPS