

# THE OLD FARMER'S ALMANAC

JUNE 18-24, 1984

All meats to be eaten, all maids to be wed.  
Summer solstice at 1.02 AM EDT Ethel and Julius Rosenberg executed at Ossining, N.Y., June 19, 1953 Average length of days for the week, 15 hours, 17 minutes German troops invaded Soviet Union June 22, 1941 Last quarter of the moon June 21 (Thu)  
Robert Clive defeated Indians in Battle of Plassey June 23, 1757 No man is rich enough to buy back his past



Ask the Old Farmer: How can I make bars of soap from bits and scraps and slivers? M.B., Pittsburgh, PA  
Place the scraps in a shallow pan in a moderate oven. When they are melted down, stir them to mix the colors and let them cool and harden. Then cut into cakes. The cost of the energy needed to melt down the scraps, though, will be more than the cost of new soap.  
Home Hint: Remove tar from hands by rubbing with lemon or orange peel then wiping immediately.

## OLD FARMER'S WEATHER FORECAST

New England: Rain with warming temperatures to start week, clearing and warm midweek, clear and hot by week's end  
Greater New York-New Jersey: Rain and cool temperatures to start week, mid through end of week sunny and hot  
Middle Atlantic Coastal: Rain and cool temperatures at start of week, partly cloudy by midweek, clear with heat wave at week's end  
Piedmont & Southeast Coastal: Rain and warm temperatures to start week, mid through end of week clear and warm

(All Rights Reserved Yankee Publishing Incorporated Dublin NH 03444)

## Oklahoma Cattle

Wednesday, June 13

Estimated Receipts: 8,500  
Same Day Last Week: 11,499

Trends unchanged in afternoon trading compared with Tuesday; feeder steers steady. Feeder heifers firm to 1.00 higher. Demand good for No. 1 cattle; light for the lower grades. Trade moderately active. Buyers less aggressive and more selective than during the Tuesday trading. Bulk supply medium frame 1 and mixed 1-2 600-900 lb. steers and 500-750 lb. heifers, weights under 500# continue scarce, however slight increase in numbers of calves just off cows.

FEEDER STEERS: Medium and large frame 1 300-400 lb. 64.50-69.75; 400-500 lb. 63.70-68.50; few lots 500-600 lb. 62.75-64.30, lot very fleshy 555 lb. 60.10; 600-700 lb. 60.00-64.50; 700-800 lb. 59.00-62.30; 800-900 lb. 58.80-60.90, short-load 845 lb. gaunt 61.20; 970 lb. lot 59.25; 1020 lb. lot 58.80. Mixed small and medium frame 1 consignments 675-950 lb. 58.00-59.60. Medium and large frame mixed 1-2 475-550 lb. 58.25-62.75; 600-775 lb. 56.00-60.00; 800-875 lb. 55.50-58.60. Medium and large frame 2 400-600 lb. 51.50-57.50; 755 lb. 56.25; 990 lb. 51.60. Large frame 2 holsteins 345 lb. 48.00; 390 lb. 47.00; 600-750 lb. 41.60-45.90 mostly 42.80-45.90; 900 lb. 42.30.

FEEDER HEIFERS: Medium and large frame 1 400-500 lb. 53.50-57.00, very fleshy 50.00-54.00; 500-750# 55.00-57.70, two lots 535-545# 59.00-59.40 500-750 lb. 55.00-57.70, couple lots 535-545 lb. 59.00-59.40. Medium and large frame mixed 1-2

500-800 lb. 51.00-56.00. Medium and large frame 2 350-725 lb. 45.00-51.00.

For The Week: Feeder steers and heifers 1.00-3.00 higher. Slaughter cows, breaking steady, boning 50 cents to 1.00 higher. Bulls 1.00-2.00 higher.

## Penns Valley Livestock

Centre Hall, Pa.

Tuesday, June 12

Report supplied by auction

Beef Cows: Utility and Commercial 42.25-46.75; Cutters 39.50-42.10; Canners 37.00-39.25; Shells 30.00.

Heifers: Good 52.75-55.50; Standard 50.00-52.00; Commercial 44.00-49.85.

Steers: Choice 58.75-61.85; Good 54.00-57.50; Standard 49.75-52.85.

Bulls: Good 50.70-53.70; Standard 46.00-49.75.

Feeder Cattle: 300-500 lbs. large frame 48.00-62.00; 300-500 lbs. small frame 46.00-52.00; 500-700 lbs. large frame 56.00-60.00; 500-700 lbs. small frame 44.00-48.00.

Veal Calves: Choice 84.00-92.00; Good 69.00-83.00; Standard 55.00-68.00; Utility 49.00-54.00.

Farm Calves: Bulls 75.00-103.00; Heifers 66.00-81.00; Uncertified 15.00-46.00.

Hogs: 48.75-50.85.

Sows: 34.75-40.00.

Boars: 28.00-32.50.

Shoats: 25-30 lbs. per head 11.00-16.00; 30-35 lbs. per head 21.00-33.00; 35-50 lbs. per head 27.00-41.00.

Lambs: 56.50-59.00.

Sheep: 7.00-12.00.

Goats per head 11.00-24.00.

# Livestock market and auction news

## St. Louis Cattle

Thursday, June 14

Receipts This Week: 3,100  
Week Ago: 2,700  
Year Ago: 3,500

As compared to last week's close, slaughter steers and heifers steady to .50 higher, except for heifers under 900 lbs. 1.00 lower. Cows weak to 1.00 lower. Bulls steady. Slaughter supply mainly choice slaughter steers and heifers.

SLAUGHTER STEERS: Mixed choice and prime 2-4 1100-1300 lbs. 63.50, one load 64.00. Choice 2-4 1000-1300 lbs. 62.00-63.50; 850-1000 lbs. 60.00-62.00. Mixed good and choice 2-3 900-1100 lbs. 59.00-61.00. Good 2-3 800-1000 lbs. 57.00-59.00. Standard to good 2-3 1000-1300 lb. holsteins 50.00-55.00, few up to 55.50. Few lots standard 1050-1100 lbs. 48.00-51.00 .RY uneven, generally steady.

SLAUGHTER HEIFERS: Mostly choice, few prime 2-4 900-

1100 lbs. 60.00-61.50. Choice 2-4 900-1100 lbs. 60.00-61.00; 700-900 lbs. 56.00-58.00. Mixed good and choice 2-3 700-900 lbs. 54.00-57.00. Good 2-3 750-900 lbs. 51.00-54.00.

COWS: (Closing Week Sales) Utility and commercial 2-4 40.00-43.00. Cutter and boning utility 1-2 40.00-43.00. High-yielding boning utility 1-2 43.50-44.00, few up to 44.50. Canner and low cutter 1-2 37.00-40.00. Shelly canner 1-2 33.00-37.00.

BULLS: YG 1-2 1200-1700 lbs. 47.00-52.00. Individual YG 1 2190 lbs. 52.25.

Wednesday's Weekly Sheep Auction. Receipts around 250 head. Compared to last week, spring slaughter lambs 2.00-3.00 higher. Not enough of any other class to test market trends.

SPRING SLAUGHTER LAMBS: Mixed choice and prime 90-125 lbs. 60.00-66.00.

SLAUGHTER EWES: Few Utility 100-120 lbs. 13.00-14.00.

GOATS: 10.00-30.00 per head, mostly 18.00-24.00.

SF 60.00-66.00; SG 60.00-66.00; TG 13.00-14.00 other symbols scarce.

FEEDERS: (Including around 700 at the regular Thursday auction.) Feeder steers and feeder heifers generally steady in a light test. Trading moderately active, demand good.

FEEDER STEERS: Medium and large frame 1: 300-600 lbs. 64.00-67.25; 600-700 lbs. 59.00-63.50. Two lots 800-875 lbs. 53.50 and 55.50.

FEEDER BULLS: Medium frame 1: 350-600 lbs. 54.00-60.00; 600-800 lbs. 50.00-52.50. Large frame 2 holsteins: 250-450 lbs. 50.00-53.00; 550-1150 lbs. 42.00-47.00.

FEEDER HEIFERS: Medium and large frame 1: 300-500 lbs. 52.00-55.00; 500-700 lbs. 50.00-56.00.

## Belleville Auction

Belleville, Pa.

Wednesday, June 13, 1984

Report Supplied by Auction

(Report Is Not Covered By Our Market News Reporter Due To Vacation — Although The Headages Were Supplied By The Auction.)

CATTLE 931.

CALVES 195.

HOGS 216.

FEEDER PIGS 336.

SHEEP 35.

## Green Dragon Livestock Sales

1 Mile North of Ephrata, PA



COWS COWS COWS  
BUYERS FROM 3 STATES

Regular consignments from Bob Kennedy & Ed Stover plus 15 other local consignors. Lots of good Northern Feeders and Stockers.

## SALE EVERY FRIDAY

Bulls, Steers, Slaughter Cows, Lambs and Veal Calves

11:00 A.M. Beef Sale Stockers & Feeders 200 to 250 each week.

12:30 P.M. - Dairy Cows

7:00 P.M. - Small Animal Sale

For Special Sales and Herd Dispersals on the farm or at our barn or other market information call: Office 717-733-2444.

WALTER H. RISSE, Proprietor

## FRIDAY, JULY 6 ON THE FARM MONTHLY BRED GILT SALE

Sale to Start Promptly at 7:30  
Every 4 Weeks

NOTICE

3 Evening Sales, July 6,  
August 3, and August 31

Located 18 miles south of Lancaster, Pa., 6 miles south of Quarryville, take Rt. 272 to Little Britain, turn north, follow Little Britain Road to Jackson Road, 2nd farm, OR take Rt. 222, out of Quarryville to Cedar Hill Road to Little Britain Road to Jackson Road. Watch for sale arrows.

50 to 60 Head

Now selling our new hybrid gilts representing mostly York & Hampshire & Landrace cross. Bred for easier & Less trouble over farrowing and better weight gains.

Validated Brucellosis Free Herd #169  
Qualified Pseudorabies Free Herd #55

Hand mated with Breeding Dates

Local Trucker Available  
No Hogs Sold On Commission

CHRIST A. BEILER

R.D. 2, Quarryville, Pa

JOHN B. STOLTZFUS

R.D. 1, Kirkwood, Pa

Abe Diefenbach, Auctioneer AU225L

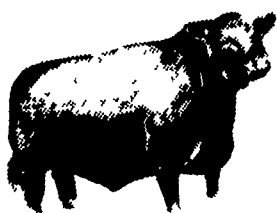
NEXT SALE DATE AUGUST 3

## LEESPORT MARKET & AUCTION, INC.

North end of Leesport, PA

Turn East off Route 61

"WHERE FRIENDS MEET"



BERKS COUNTY'S ONLY WEEKLY  
CATTLE & SWINE AUCTION —  
WEDNESDAY AT 1 P.M.

FARMER'S MARKET Every Wednesday,  
10 A.M. TO 9 P.M.



Garden Fresh Fruits & Vegetables - Bakery Fresh Cakes, Pies and Buns - Butcher Fresh Meats & Cheese - Sporting Goods - Clothing - Furniture - Jewelry - Used Items & Collectibles.

PHONE: 215-926-1307

LEROY WEIST &amp; JOHN WEIST, MGRS.



## ATTENTION FARMERS

EVERY MONDAY  
HATFIELD PACKING CO. and  
MOYER PACKING CO.

Will Receive Your  
Hogs and Cattle at the  
DANVILLE LIVESTOCK MARKET  
RD 4, Danville, PA

- We will receive your hogs from 8 AM to 12 Noon every Monday Your hogs will be weighed and paid for immediately
- We will also accept your sows & boars.
- Your cattle will be received from 12:30 to 5 P.M. We will either pay you for your cattle immediately or you may sell them dressed weight.
- There will not be a commission or yardage fee deducted from your check.
- You may call our office Monday morning and we will be able to tell you the base price for hogs for the day

MELVIN M. LEHMAN - Owner  
Danville Buying Station

Phone: 717-275-2880