

# Pa. weekly crop roundup

The rains had finally eased during the week ending June 10 and in all three regions of the Commonwealth 5 days were rated suitable for fieldwork. Activities for the week include: plowing; spraying; mowing; baling hay; planting corn, green beans, tomatoes, green peppers, field corn, and soybeans. Southern region producers are beginning to transplant tobacco.

### SOIL MOISTURE

Topsoil moisture was rated adequate by 62 percent of our reporters and the remaining 38 percent rated it surplus. In the northern region, 57 percent rated soil moisture surplus and 43 per-

cent rated it adequate. Eighty-seven percent of the central reporters felt the moisture was adequate and 13 percent considered it surplus. The southern area had 67 percent reporting adequate soil moisture and 33 percent surplus.

### CORN PLANTING

By the end of the week, 76 percent of the corn crop was planted which was behind last year's plantings of 83 percent and the five year average of 87 percent. Northern growers reported 64 percent of the corn crop planted while the central region had planting levels of 85 percent and the southern section reported 89 percent

planted.

### SOYBEAN PLANTING

The statewide level of planted soybeans was reported at 43 percent. At this time last year, planted levels were 50 percent. The northern section matched the state level at 43 percent while the central and southern regions had soybean acreage planted at levels of 31 percent and 57 percent respectively.

### TOBACCO TRANSPLANTING

Across the Commonwealth, 30 percent of the tobacco crop was transplanted from the beds to the fields which is ahead of last year's level of 27 percent.

### WHEAT DEVELOPMENT

State reporters reported the

wheat crop as 55 percent headed, trailing last year's levels of 68 percent. The northern region had 40 percent of the crop headed, the central region matched the state progress of 55 percent and the southern region had 88 percent of their wheat crop headed. Some southern reporters are finding leaf stripe, rust and leaf spot on their plants.

### BARLEY DEVELOPMENT

Statewide totals for barley development were 86 percent headed and 9 percent turning yellow. At this time last year, barley development was 65 percent headed and 29 percent turning yellow. Northern producers report 87 percent of the barley headed and 2 percent turning yellow. The

central region had 96 percent headed and 1 percent turning yellow. The southern area's barley is 71 percent headed and 27 percent turning yellow.

### OAT DEVELOPMENT

Across the state, only 6 percent of the oat crop was headed compared to last year's levels of 8 percent. Both the northern and central regions reported that none of the crop was headed and the southern region had 30 percent of the oat crop headed.

### HAY AND PASTURE CONDITIONS

First cutting of alfalfa was 25 percent complete, behind last year's cuttings of 29 percent. Insect damage has been reported as

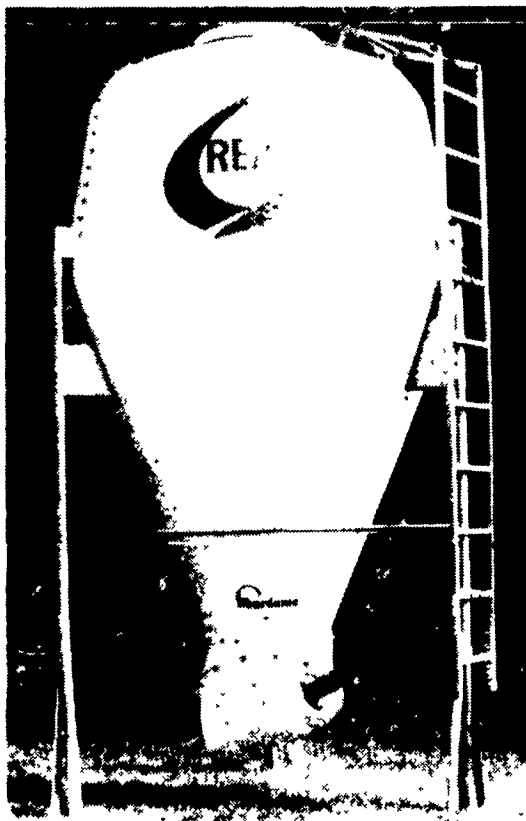
(Turn to Page A28)

## FREE REAL SEAL:

Any Fiberdome Feedbin purchased during June Dairy Month, receives a free Real Seal Logo imbedded on your new Fiberdome bin.

Consider all these included options:

- Exclusive 5 year warranty
- Heavy 11 gauge steel tubing
- Steel components zinc-plated with yellow dichromate finish
- Heavy reinforced fiberglass with attractive white glossy gelcoat finish
- Large 26" Hopper opening
- Wide industrial ladder
- Large 24" lid opening



For more information, contact our office at Fiberdome, Inc., P.O. Box 11, Lake Mills, WI 53551 or by calling (414) 648-8376.

## CATTLE GUARD

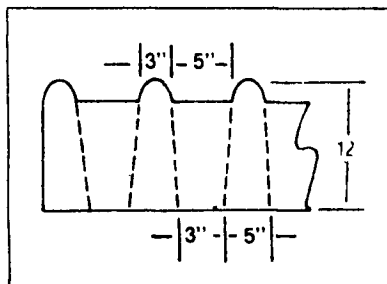
Largest and Heaviest on the Market



### BUILT TO LAST FOR A LIFETIME

These heavily reinforced Cattle Guards are precast in one piece for a lifetime of maintenance-free operation. Supports heavy machinery and truck loads.

LENGTH	12 ft or 16 ft
WIDTH	7'1"
DEPTH	1 ft
WEIGHT	16 ft - 9000 lbs 12 ft - 7000 lbs
STRENGTH	5000 PSI reinforced Concrete



CROSS SECTION

For More Information, Contact:

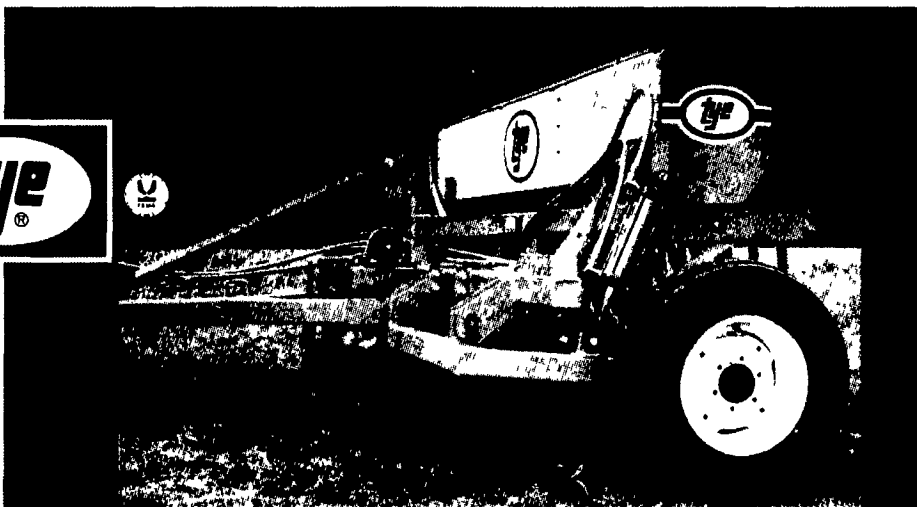


### Sollenberger Silos Corp.

A Nitterhouse Company  
Box N Chambersburg, PA 17201 (717) 264-9588  
A Producer of Quality Concrete Products Since 1923

## For a big planting job with a small tractor

Hook up  
to a  
10 foot  
Stubble  
Drill™



Tye's big 120" planting width and narrow, transportable design make it a whole lot easier for a small tractor to perform large planting jobs

Tye's 10' No Till Drill is equipped with the same performance proven planting system that is standard on Tye Stubble Drill™ and Pasture Pleaser® models

1. Heavy-duty spring swivel coulters
2. Internally fluted seeders
3. Front seed delivery double-disc openers and
4. Press/depth control wheels

The 10' drill has fifteen openers, 8" row spacing, and features similar to the popular Tye Pasture Pleaser®. The convenient 120" planting width complements the Tye No Till line of 80" Pasture Pleasers and the 160" Stubble Drills. Options include: ★ Choice of coulters blades ★ Wide variety of press/depth control wheels, and ★ Legume, bluestem and fertilizer attachments

"For your nearest dealer, please contact —"  
**HAMILTON EQUIPMENT, INC.**  
Wholesale Distributors  
567 South Reading Road  
P.O. Box 478, Ephrata, PA 17522  
PHONE: 717/733-7951

## FISHER'S PAINTING

- ALL TYPES OF INTERIOR & EXTERIOR PAINTING
- SANDBLASTING
- ROOF COATING
- RESTORATION & WATER PROOFING ON STONE & BRICK BUILDINGS

*We Specialize In Farm Buildings,  
Feed Mills, Water Tanks, Etc.  
With Aerial Equipment*

If you need good paint, roof coatings, or paint accessories at reasonable prices, stop at our new outlet store.

**We buy in large quantities**

STORE, SHOP AND OFFICE LOCATED  
IN OLD STONE BARN AT:  
4056A Newport Road  
Kinzers, PA 17535  
(Across From Pequea Valley School)  
**717-768-3239**