

Out of the mouths of babes often come gems

BY JOYCE BUPP
Staff Correspondent

AIRVILLE — Marty Heaps wasn't quite prepared for a few of the question that might be thrown at him when he first agreed to be spokesman for the York County chapter of Young Dairymen.

Heaps, dairy farmer from Fawn Grove, headed up the chapter's recent promotion blitz in several elementary schools of the Red Lion Area School District. In a ten-day period, a team of six of the chapter's, members took their dairy story and demonstrations to

over 600 children ranging from first through sixth grades.

The Young Dairymen chapters are sponsored for their younger cooperative members by Dairymen, Inc. Several chapters are sponsored by the Middle Atlantic Division of Dairymen Inc., with division headquarters at Baltimore.

At the four elementary schools, Heaps got the show rolling with a brief informal talk about how cows produce milk for their calves, plus plenty left over for people, the careful, special handling that milk

receives between the cow and consumers, and what cows eat to produce milk.

An eight-minute film, "Hey Cow," brought oohs and aahs over colorful shots of baby calves and cows. The educational film was produced by the Dairy Council and Children's Television Workshop, developers of the successful Sesame Street programs.

Minutes into the film, hand milking, more modern machine milking methods, the milk processing information balanced continuing pictures of cows and

'What's this?' asks Marty Heaps



"How many of you know what this is?" Marty Heaps asks youngsters. Nearly everyone knows the Real Seal.

Bottoms up



It's Bottoms Up with UHT samples by members of the third-grade classes of Mr. Albury and Mrs. McCurdy at Locust Grove Elementary school.

Cranking it up

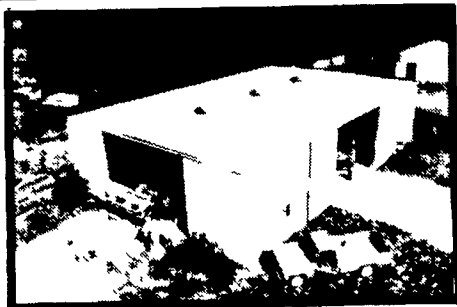


Teresa Pomraning helps youngsters crank out some homemade ice cream.

BUTLER

BUILDINGS FARM

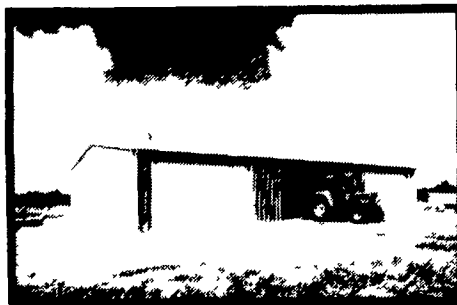
FREE FOUNDATION



FARMSTED II



SHOP - STORAGE - GARAGE



AG MASTER 2:12

FREE*

**CURTAIN WALL
FOUNDATION MATERIAL**

Using Earth Anchors
(To Butler Specifications).

* No Farmsted I or One Bay Buildings Qualify.

See Your Agri-Builder For Details

PROGRAM ENDS JUNE 29th

Bethlehem

**20 YEAR WARRANTY
GALVALUME MATERIAL**

BUTLER MFG. CO.

Attn P E Hess

P O Box 337, Oxford, PA 19363

Dealer Inquiries Available in Pennsylvania Counties

Lancaster Schuylkill Armstrong Indiana Erie Crawford Warren Elk Cameron

McKean Clinton Lycoming Sullivan Wyoming Luzerne Columbia

Bradford Susquehanna Adams Cumberland York Potter Tioga New

Jersey Counties Sussex Morris Passaic Atlantic Cape May Mon

mouth Middlesex Somerset Maryland Counties Talbot Dorchester

New York Counties Orleans Genesee Monroe Livingston Allegany

Steuben Yates Seneca Cayuga Tompkins Schuylkill Tioga Chemung

Broome Chenango Madison Lewis Oneida Herkimer Fulton Mon

terony Otsego Delaware Schoharie Sullivan Orange Ulster Greene

Chautauque Cattaraugus

No Dealers Fees

Name _____

Address _____

County _____ Zip _____

City _____ State _____

Phone _____

(Include area code)

LF

C & M SALES INC.
R D.#1
Honesdale, PA 18431
PH 717-253-1612

**NAZARETH BUILDING
SYSTEMS, INC.**
P O Box 47
Nazareth, PA 18064
PH 215-759-1331

**LEROY E. MYERS,
INC.**
Route #1, Box 163
Clear Spring, MD 21722
PH 301-582-1552

**O. A. NEWTON
& SON CO.**
Bridgeville, DE 19933
PH 302-337-8211

D. E. SMITH, INC.
Mifflintown, PA 17059
PH 717-436-2151

MATTSON ENTERPRISES
1605 Mt. Holly Road
Burlington, NJ 08016
PH 609-386-1603

G & G BUILDERS
435 King Street
Pottstown, PA 19464
PH: 215-582-4050

**GOMPFF CONSTRUCTION
CO. INC.**
1841 Jerry's Road
Street, MD 21154
PH: 301-692-5350

**TRI-COUNTY
AGRI-SYSTEMS**
R D #1, Box 55
Swedesboro, NJ 08085
PH 609-467-3174

**NOK
BUT**

NEW PRODC

- PLATFORM SCALE
Pound Capacity
- BULK FEED BLS
Of Capacities
- LEASING PROCA
- FULL LINE OF IS
ROLL OR BOAR

See Your Butler
Insulation