



BUSINESS NEWS...

Ca deficit is important

CHICAGO, Ill. — Underfeeding calcium (Ca) to pullets and hens during their first few weeks of egg production can cause excess feed consumption, increased body weight and liver fat, higher fat-pad weight, decreased shell quality, and fatty liver hemorrhagic syndrome, according to Dr. David A. Roland Sr., Auburn University poultry nutrition professor.

Speaking to almost 600 scientists and feed industry representatives at the recent 32nd Annual Pfizer Research Conference, Dr. Roland reported that his research studies indicate the best time to boost Ca levels from 1.0 percent to 3.7 percent in pullet-to-hen changeover diets is one week

before first egg production.

"If egg producers wait until birds are laying, more Ca will be utilized in egg-shell production," Roland explained. "The birds will be Ca-deficient and then over-consume feed. This is symptomatic of Ca deficiency, and can cause the problems associated with other common Ca feeding programs."

Dr. Roland indicated that many egg producers are paying 10 times too much to satisfy hens' Ca requirements and, at the same time, producing eggs from young hens that have shell quality equivalent to those of hens 12 months in lay.

All - wheel drive gives extra pull

CHICAGO, Ill. — Efficient power, either horsepower or manpower, is essential to cost-effective farming. Failure to fully utilize expensive horsepower adds to production costs and wastes valuable man-hours.

When International Harvester designed its 50 Series line of two-wheel drive tractors, the company recognized that many farmers would have need for extra pulling power and flotation, according to Bill Stover, marketing planning manager for tractors. Stover says IH designed an integrated center line all-wheel drive system for its newest line of tractors which has no universal joints and is factory installed rather than being added on later.

All-wheel drive, or front-assist tractors, have been popular in Europe for many years because they provide necessary traction and better performance without the use of duals and excessive fuel.

"About 75 to 80 percent of European farm tractors feature front-wheel assist," Stover notes. "But, the level of use in North America is only about 10 percent."

"At IH we've seen the demand for front-assist tractors growing. They give farmers the effective power and flexibility to be more efficient in cutting overall

production costs," Stover points out.

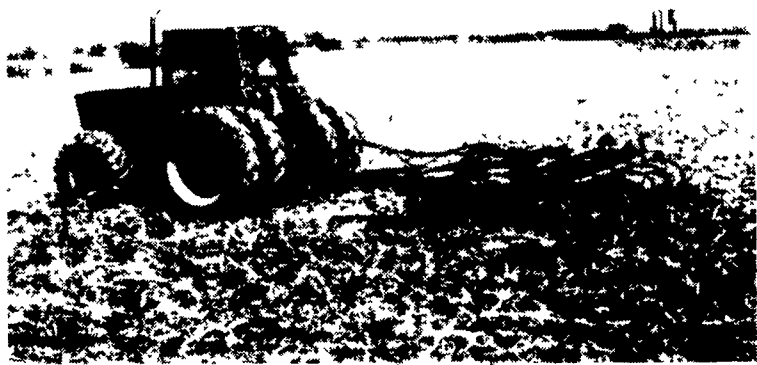
A concern among U.S. farmers always has been ballasting, or proper weight distribution. According to Stover, IH all-wheel drive tractors were designed to deliver level tire contact in all turning situations. In poor field conditions, that ground contact can improve your tractor efficiency. Tire wear also is reduced.

All-wheel drive tractors allow you to get into the field earlier and stay longer. You get more traction, less wheel spin, better fuel economy, lower operating costs and less soil compaction, Stover explains.

"No matter how you look at it, two-wheel drive tractors in North America have gotten so powerful that even with duals, you can't always effectively utilize the full horsepower, especially under adverse or marginal conditions," Stover says.

"That's why over the next several years, the growth of all-wheel drive will increase substantially in North America," he concludes.

International Harvester provides seven models with factory installed all-wheel drive in the 30 and 50 Series tractors, with horsepower ranging from 80 to 182 P.T.O. horsepower.



All-Wheel drive, or front-assist tractors, make efficient use of horsepower while avoiding excessive fuel use. International Harvester all-wheel drive units are designed and built as an integral part of the tractor.

Tanzanians view Lancaster County-style agriculture



John Yocum, (left) senior research associate, outlines current research being conducted at Penn State's Southeastern Field Research Lab in Landisville.

Looking on are Gerald Phillips, Farm Credit appraisal analyst, and two visitors from Tanzania, Elisa J.E. Marandu and Francis F. Lungu. The Tanzanians were guests at the research facility on June 8.

Regional managers for their country's Rural Development Bank, the two Tanzanians are graduate students at West Virginia University studying agricultural economics.

The two-year exchange program is made possible through a scholarship program offered by the Agricultural Development Cooperative Institute of Washington, D.C.

"One reason Elisa and Francis have come to Lancaster County is because of our diversified agriculture," says Phillips. The Lancaster Farm Credit Association is acting as tour guide for two weeks, and instructing the students on Farm Credit lending policies.

Phillips notes that Tanzanian regional managers have a much broader range of responsibilities than their Farm Credit counterparts. Their duties include the establishment of credit policies, training of personnel, the writing and servicing of contracts, and collecting delinquent accounts.

The Tanzanian managers also act in an extension capacity, Phillips added, instructing farmers in proper agricultural procedures. J.H.

AC offers extended warranties

MILWAUKEE, Wisc. — Allis-Chalmers tractors and Gleaner combines are now offered with extended warranties, according to Jon Arno, Allis-Chalmers marketing manager.

"These new 'Peace-of-Mind' warranties demonstrate our conviction that we build the most reliable tractors and combines in the marketplace," he said.

"All current production Allis-Chalmers tractors are now covered by a new three-year/3,000 hour engine and power train warranty."

"This comprehensive warranty puts Allis-Chalmers out in front of the industry," he said. "We're convinced farmers want additional warranty coverage, so we are responding to that need," he said. "In addition, we're introducing an optional warranty extension in which the customer may purchase three-year protection of all tractor components. Besides the engine and power train, this includes the turbocharger, radiator, injection pump, nozzles, oil cooler, muffler, alternator, starter motor, condenser, blower, compressor, steering cylinder and tachometer," he said.

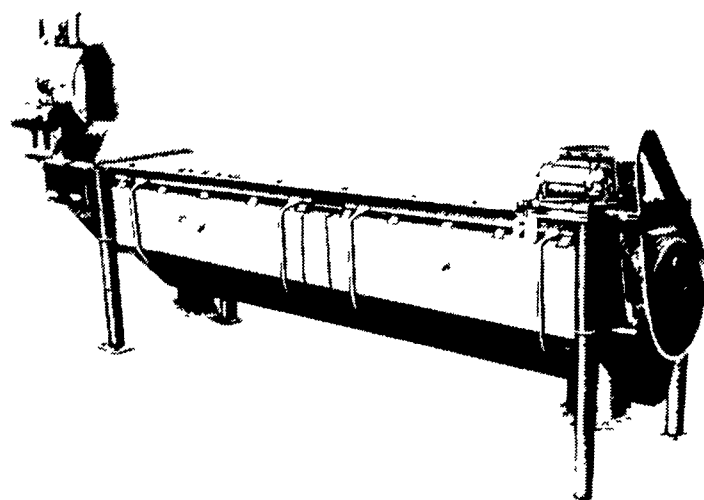
"On combines, the two-season 'Peace-of-Mind' warranty has been expanded to include conventional as well as rotary Gleaner combines sold in 1984. It is being expanded because of its popularity among farmers across North America. Gleaner combines are worth more in terms of features, productivity, and, now, 'Peace-of-Mind,'" he said.

"We've always been a leader in prompt parts delivery, but we've introduced this program to provide farmers with more peace of mind," he said.

"The nationwide parts system, anchored to our expanded parts headquarters in Batavia, Illinois, means even better service. If, by chance, we do not have the part needed to keep the eligible machine in operating condition, one quick phone call means the part will be shipped by the end of the next working day. We

guarantee it. Farmers will be reimbursed for the part if it isn't shipped then," he said.

"The Next Day Parts Guarantee applies to all parts used on new combines, corn heads, grain heads, 6060, 6080 and 8000 series tractors, as well as four-wheel series tractors purchased in 1984."



New high-capacity sifter from JSX Corporation cleans all types of grains.

High capacity sifter cited

MINNEAPOLIS, Mn. — A new High Capacity Sifter for the cleaning of all grains has been introduced by JSX Corporation.

The new sifter called the HCS-5000 features a poly-brush cleaning system that agitates the grain or seed as it carries it over a perforated metal trough. The trash particulates are screened from the product; a final aspirator and

industrial blower lift the large straws, dust, weeds and other light materials from the cleaned produce for thorough, complete cleaning of any granular product.

The HSC-5000 is available in capacities of 50 tons per hour, 100 tons per hour and 200 tons per hour. For more information, contact JSX Corporation, 600 Washington North, Minneapolis, Mn. 55401.