



Livestock market and auction news

Virginia Auction Summary

May 31-June 6

Report supplied by VDA

Total of Va. Weekly Feeder Cattle Auction Receipts: 3,812.

TREND: Steady to \$3.00 lower.

Southwestern, Va.

Auction Summary

May 31-June 6

STEERS: 300-500 lbs. Medium 1 55.00-65.50; Large 1 56.00-67.75; Small 1 52.00-62.00. 500-700 lbs. Medium 1 69.00-65.00; Large 1 54.00-66.00; Small 1 57.50-58.00. 700-1000 lbs. Medium 1 51.25-60.00.

HEIFERS: 300-500 lbs. Medium 1 45.00-56.00; Large 1 48.00-55.25; Small 1 40.75-50.00. 500-700 lbs. Medium 1 45.00-62.50; Large 1 45.00-52.00; Small 1 38.00-49.50; 700-900 lbs. Large 1 44.25-47.00.

Northern Va.

Auction Summary

May 31-June 6

STEERS: 300-500 lbs. Medium 1 61.50-73.00; Large 1 57.50-68.00; Small 1 59.00-63.00. 500-700 lbs. Medium 1 55.00-66.50; Large 1 58.50-69.00; Small 1 55.00-61.00. 700-1000 lbs. Medium 1 54.25-61.50; Large 1 58.25-61.50.

HEIFERS: 300-500 lbs. Medium 1 44.00-53.00; Large 1 47.00-53.00; Small 1 42.00-50.00. 500-700 lbs. Medium 1 43.00-54.00; Large 1 45.00-54.00; Small 1 35.00-46.00. 700-900 lbs. Medium 1 42.50-49.25.

Southeast Va.

Auction Summary

May 31-June 6

STEERS: 300-500 lbs. Medium 1 55.50-61.50; Large 1 60.50-62.00; Small 1 55.00-59.00. 500-700 lbs. Medium 1 54.00-64.50; Large 1 60.00-64.00. 700-1000 lbs. Medium 1 52.00-58.25.

HEIFERS: 300-500 lbs. Medium 1 46.00-52.00; Large 1 49.50-51.00; Small 1 46.25-48.00. 500-700 lbs. 42.00-55.20; Large 1 51.00-55.60; Small 1 43.50-48.25.

Shenandoah Valley Livestock

Harrisonburg, Va.

Saturday, June 2

Report supplied by auction

FEEDER CATTLE: Steers: M&L-1 300-500 lbs. 62.00-68.25; 500-700 lbs. 58.00-65.50; 700-1000 lbs. 55.00-60.00; Holstein 300-1000 38.00-46.50. S-1&M&L-2 300-500 lbs. 57.50-63.00; 500-700 lbs. 48.00-56.00.

FEEDER BULLS: M&L-1 300-500 lbs. 54.00-61.50; 500-700 lbs. 52.00-55.00. S-1&M&L-2 300-500 lbs. 44.00-51.00; 500-700 lbs. 42.00-48.50.

HEIFERS: M&L-1 300-500 lbs. 47.00-52.50; 500-700 lbs. 43.00-49.50; 700-800 lbs. 43.00-48.00. S-1&M&L-2 300-500 37.50-45.00; 500-700 lbs. 41.00-44.00.

STOCK COWS: Beef 430.00-530.00; Baby Calves 25.00-93.00, mostly 60.00-80.00.

SLAUGHTER CATTLE: Heifers- Good 2-3 50.00-54.00.

SLAUGHTER COWS: Utility & Commercial 2-4 36.00-43.50; Canner & Cutters 1-3 33.00-37.00.

SLAUGHTER BULLS: 1&2 45.00-55.00.

LAMBS: High Choice & Prime 63.00; Choice 60.00; Feeder Lambs Choice 47.50-49.00; Slaughter Ewes 5.00-10.50.

HOGS: US 1-3 200-240 lbs. 47.00; Sows 1-3 45.00; Boars 30.75.

VEAL: Choice & Prime 60.00-72.00; Good 52.00-61.50.

SLAUGHTER CALVES: Good & Choice 48.00-55.00.

46.00-50.00. Cows- Large run \$1.00 higher. High Yield 44.00-47.75; Average 40.00-43.00; Big Middle 37.00-39.00; Fatty herf. 36.00-40.00; Shelly 39.00 down. Fat Bulls- \$1.00 higher. Good 53.00-58.50; Medium 48.00-52.00. Veal Calves- \$2.00 lower. Farm Calves 5.00-10.00 lower. Choice 80.00-85.00; Good 75.00-79.00; Medium 65.00-74.00; Farm Hfrs. 62.00-70.00; Farm Bulls 90.00-111.00; Light & Weak 53.00 down. Lambs- Mostly steady. Choice & Good 55.00-58.00; Medium 50.00-54.00.

STOCKER: Steers 300-550 lbs.- Good run steady prices. Choice 63.00-70.50; Good 55.00-62.00; Medium 48.00-54.00; Culls 47.00 down. Steers 600-850 lbs.- Choice 61.00-65.00; Good 54.00-60.00; Medium 53.00 down. Heifers-(All Weights)- Choice 51.00-55.00; Good 44.00-50.00; Medium 38.00-43.00. Springing Heifers- to 670.00. Pigs Hd.- \$3.00 lower. 20-30 lbs. 23.00-34.00; 40-60 lbs. 35.00-42.00. Shoats by lb.- to 40.00. Slaughter Hogs- Mostly steady prices. 220-230 lbs. 46.75-48.00; 240-260 lbs. 46.00-47.50; 200-215 lbs. 45.50-46.00. Sows- 450-600 lbs. 41.00-43.25; 300-400 lbs. 38.00-40.50. Bulls- Choice 55.00-58.50; Good 50.00-54.00; Medium 45.00-49.00.

Eighty-four Livestock

Eighty-Four, Pa.

Monday, June 4

Report Supplied by PDA

CATTLE 256. Compared with the

market two weeks ago, slaughter cows steady. Few Good slaughter steers 58-62.00, Standard 52-56.00, few Utility 44-51.00. Standard slaughter heifers 50-53.00, Utility 44-50.00. Breaking Utility & Commercial slaughter cows 43-46.50, few 47.75, Cutter & Boning Utility 38-43.25, Canner & Low Cutter 31-38.50, Shells down to 25.00. Yield Grade #1 1000-2100 lbs. slaughter bulls 49-54.50, Yield Grade #2 900-1400 lbs. 44-48.50.

FEEDER CATTLE. Few Medium Frame #1 350-600 lbs. feeder steers 54-61.00; few Medium Frame #1 350-500 lbs. feeder bulls 50-59.00.

CALVES 241. Good & Choice Vealers 2.00-4.00 lower, Standard & Good 5.00-10.00 lower. Choice Vealers 70-80.00, Good 60-71.00, Standard & Good 90-120 lbs. 43-56.00, 60-85 lbs. 39-44.00.

FARM CALVES. Holstein Bulls 90-120 lbs. 60-80.00.

HOGS 103. Barrows & gilts weak to 25 cents lower. US No. 1-2 210-255 lbs. barrows & gilts 48-49.00, few No. 1-3 230-250 lbs. 46-47.50, few No. 2-3 260 lbs. at 43.00, few No. 1-3 130-170 lbs. 41-42.00. Sows: US No. 1-3 350-600 lbs. sows 41-43.00. Boars 34.25-40.00.

FEEDER PIGS 18. US No. 1-2 20-25 lbs. feeder pigs 13.50-16.00 per head.

SHEEP 193. Spring slaughter lambs mostly steady. High Choice & Prime 65-90 lbs. spring slaughter

lambs 65.50-72.00, Choice 55-77 lbs. 61-64.00, Good 50-65 lbs. 51-57.50. Slaughter ewes 11.50-25.00. Goats 23: 9:00-25.00 per head.

Penns Valley Livestock

Centre Hall, Pa.

Tuesday, June 5

Report supplied by auction

Beef Cows: Utility and Commercial 43.25-47.75; Cutters 39.50-42.85; Canners 35.25-39.10; Shells 33.00.

Heifers: Commercial 41.00-46.50. Steers: Good 55.00-58.75; Standard 48.75-52.50.

Bulls: Good 52.50-56.10; Standard 48.50-52.00.

Feeder Cattle: 300-500 lbs. large frame 42.00-45.50; 500-700 lbs. large frame 44.00-48.00.

Veal Calves: Prime 98.00-109.00; Choice 82.00-97.00; Good 68.00-78.00; Standard 55.00-67.00; Utility 48.00-54.00; Uncertified 35.00-42.00.

Farm Calves: Bulls 80.00-111.00; Heifers 60.00-71.00.

Hogs: 47.50-49.00.

Shoats: 25-30 lbs. per head 15.00-21.00; 30-35 lbs. per head 21.00-29.00.

Lambs: 50.00-58.00.

Sheep: 9.00-20.00.

Goats per head 12.00-31.00.

Four States Livestock

Hagerstown, Md.

Wednesday, May 30

Report supplied by auction

SLAUGHTER: Fed Steers & Heifers- No Choice offered; Medium & Good 50.00-53.00. Heifers- Good 51.00-54.50; Medium

KING'S AUCTION, KIRKWOOD

Hay, Straw and Grain Auction Every

EVERY TUESDAY

12:00

Located Rt. 472 5 miles south of Quarryville or 6 miles north of Oxford at Shaub's Auction House.

No out of state checks

ALL TRUCKERS AND FARMERS WELCOME

VINTAGE SALES STABLES, INC.

AUCTIONS

Every Thursday at 1 P.M.
HAY, STRAW & GRAIN

Sold on Commission

10 miles east of Lancaster, 8 miles west of Coatesville on Rt. 30, Paradise, PA.

L. Robert Frame, Manager

For information

717-442-4181

215-458-8518

LOUIS LYONS & SON

Consign your cattle and hogs, feeder pigs & calves to Louis Lyons & Son. They offer choice service, excellent sorting & marketing of your livestock.

Charles Diller, Manager

Phone 394-7915

Burnell Siegrist - Buyer & Seller

Phone 626-8653

Experienced
Personnel

Immediate
Weighing

Seeking Profits In Commodities Trading?

- Hedging
- Speculating
- Managed Account

Call Forney Longenecker,
Commodities Investment Executive,

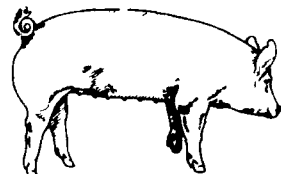
At (717) 295-8914

SHEARSON/AMERICAN

EXPRESS, INC.

29 E. King St.

Lancaster, PA 17603



EMERY'S
BUYING
STATION

OPEN TO RECEIVE
YOUR MARKET HOGS

AT THE GREEN DRAGON MARKET
RD 4, EPHRATA, PA 17522
1 MILE NORTH OF EPHRATA
ON NORTH STATE STREET.

HOURS: MONDAY, TUESDAY, and
WEDNESDAY 6:00 A.M. to 11:30 A.M.
215-458-5677 Residence
717-733-9648 Office

YOU ARE PAID FOR YOUR
HOGS IMMEDIATELY

Ken & Lois Emery, Proprietors

CONTROL MUD!

Stop Erosion with



TM

Agri-Fabric™
POLYESTER

Agri-Fabric™, an agricultural engineering fabric will control mud in:

- DRIVEWAYS AND LANES
- BARNYARDS
- STORAGE AREAS

and erosion in:

- WATERWAYS
- STREAMBANKS
- STREAM CROSSINGS

PUT AGRI-FABRIC™ TO WORK IN
YOUR FARMING OPERATION TODAY!

Agri-Fabric™ engineering fabrics are highly needed non-woven fabrics with excellent tensile properties, high filtration potential and outstanding permeability.

Agri-Fabrics™ are 100% polyester needle-punched engineering fabrics. They deliver a combination of advantages unmatched by any other engineered fabrics. They're resistant to freeze-thaw, soil chemicals and ultraviolet light exposure — excellent where the requirement is (1) tensile reinforcement, (2) planar flow, (3) filtration, and (4) separation. For example, in grass waterways, access roads, barnyards, rip-rap channels and pond linings. And much more. Agri-Fabrics™ are extraordinary engineering fabrics.

Note: Agri-Fabric has been proven effective on weed control for landscaping and garden usage.

When Calling Toll Free 1-800-221-4699
Use Extension 3147

Call or Write for Free Samples of Fabric
specify Application
to

Agri-Fabric
Diane Leininger
RD 2, Denver, PA 17517
215-267-7870