

**MAILBOX MARKET**

**MAILBOX MARKET**

**MAILBOX MARKET**

**MAILBOX MARKET**

**TRUCKS & TRAILERS**

**TRUCKS & TRAILERS**

**TRUCKS & TRAILERS**

For Sale - AKC Pomeranian male Proven sire, \$150 firm Nubian milking goat \$75 Buck kid \$30 Adams Co 717 359 4374

For Sale Used Velour Peterbilt air ride truck seat \$35, Lanc Co, between 9 a m and 3 p m 717-626-5466

For Sale - Cat 15 dozer - running - \$1500 00, 21 ft Thompson Mahogany bay boat, 75 horse Evinrude, Leh Co, 215-967-5815

For Sale - Two open top bulk milk tanks DeLaval 610 gal Sunset 735 gal ex cond, \$1250 & \$1750 (703) 382-3071

For Sale 1936 Lehigh Cabinet wood & coal burning kitchen range Monroe Co, 215 381 3157

For Sale Reg Hampshire ram w/papers, born 11-25-80 Ready for breeding 100 00 or best offer Northampton Co, 215-863-7432

For Sale - NH 65 compact bailer \$550 4 insecticide boxes for Ford 311 corn planter, \$25 00 ea Berks Co, 215-582-4729

For Sale - NH 315 baler, hydraulic thrower ex cond, \$6000 00 or trade livestock Frederick Co, Md 301-898-5244

For Sale - JD #35 harvester w/2 row corn head good cond, \$750 00, Somerset Co, 814-634-5480 between 9 30-5 00 Monday through Saturday

For Sale - Used Int D 282 diesel eng parts, some complete engines "everything cheap" Leonardtown Md after 5 p m 301 475 8949

For Sale - Oliver 4 row 3 pt cultivator 300 00, Oliver 6 row 3 pt cultivator 500 00, Carroll Co Md 301 848 6395

For Sale Ariens 30 in riding mower, in good cond, \$250 00 Berks Co 215 683 5553 weekdays after 4 p m

For Sale Farmall SC/w cult \$1200 Ford mounted rotavator \$250, Super A w/mounted woods mower \$2800, 215-598 7357 or 7546

For Sale - NH Buck saw Front mount w/belt & brackets Stored indoors \$125 00 Centre Co, 717 332-5742 after 6 p m

For Sale - Inter haybine 7 ft very good cond, \$450, Bucks Co, 215-968-2507

For Sale - Fairbanks platform scale 500 lb cap all steel, flatbed wagon for 2 horses on wooden wheel, 717-354-0616

For Sale German shepherd-husky - mixed puppies, mother good watch dog Farm raised, \$25 00 ea Slattington, Pa 215 767-9492

For Sale - 609 tobacco plants, & warm morning wood stove Benj S Lapp RD 4 Box 42 Honeybrook, Pa 19344

Notice Now taking orders for cauliflower, broccoli and cabbage plants Caleb M Stauffer RD#2, Box 761 Ephrata, Pa 17522

For Sale - Home comfort coal & wood range, w/reservoir, ex cond, \$500 00, Lyc Co, 717 547-1326

For Sale - 25 bales of wheat straw \$1/bale Wanted dozen fertile turkey eggs before 8 a m Lanc Co 717-548-2006

For Sale - 4 Wright & black & decker air hoist 1000 lb \$275 00 ea Dick Vincent, Gap, Pa 717-442-4203

For Sale - Farmall Super C w/cultivators Old barn (30'x69') w/wide siding boards & heavy timbers, to tear down, Lanc Co 717-426-1539

For Sale - Used 4 ton plywood feed bin, \$200 Gideon F Stoltzfus RD 2 Box 2276 Gap, Pa

For Sale - Ford 1969 Galaxy 500 \$175 - also '64 VW Beetle & extra engine \$70, Newark, Del 302-731 5505

For Sale Aermotor windmill, \$350 215-683 7943

For Sale C-2 Gleaner cornhead #430 NR For Sale - Australian Blueheeler female, 1 yr old working dog Dau Co, 717 362-9850 eves

For Sale Morin Grain Dryer model 400 \$5500 00, John Bean 2 row potato harvester new webs & rollers, \$2000 00, 717 235 3725

For Sale Sex-Sal pullets about 20 wk old June 15 Alvin B Leid RD 3 Ephrata, Pa 17522 Lanc at Martindale

For Sale - Cardinal 6"x41" PTO grain auger Good cond, \$500, Reason for selling bought 8", Lanc Co 717-786-1458

Help Wanted - Single young - person for dairy & farm work, live in, salary Balti Co, M D 301 357 8466 after 8 p m

For Sale AKC Great Pyrenees puppies guaranteed to want to protect your sheep from predators 717-563-2589

For Sale 5 Burner new perfection table top kerosene range, \$300 00, Inter 101 ground drive manure spreader, Myer's gas refrig, 717-656-7169

For Sale - 18, 1 gal chick water fountains, 6 doz 1/2 gal, Lanc Co 215-484-2325

For Sale - Exc mixed hay \$2/bale Insulated double dog house, (removable roof) on 6' wire runs \$65 Lanc Co 215-267-2706

For Sale - NH baler works \$295 NI 323 Al corn-picker 1 owner \$2500, cornbin wagon \$595, JD hay crimper \$195 717 354-0266

Wanted - 32 or 36 ft skeleton elevator, Levi S Zook R#1 Orville Box 133, Pa 17566

Wanted Parts for reel on 5542 Oliver combine, Huntingdon Co, 814-667 3487

For Sale Two Badger Chuckwagons, 14 ft boxes, 8 ton running gear 3 beaters, roof Ex cond Sch Co, 717-682-3812

For Sale - Endless mountains Bradford Co, 50 acres w/all elec Cedar Chalet southern exposure nice view landing strip 215 646-5466

For Sale ACCA w/side mounted sickle bar, \$1200 00 Case 1030 diesel ex cond, \$6500 00, Leh Co, 215 285 6451

Forklift truck 4000 lbs. cap with side shift, sold tires, \$2300, power generator 110-220 28 KVA diesel powered on four wheel trailer, \$1700. 717-652-1957.

1977 F350 Stake Dump, auto., V8, good rubber, new paint. 717-692-2086. Coleman's Auto Sales.

1974 F350 Stake Dump, 4 speed, V8, good rubber. 717-692-2086. Coleman's Auto Sales.

1977 Chevy C30 cab & chassis, PS, PB, 4 speed, nice truck. 717-692-2086. Coleman's Auto Sales.

'83 Chevy C10 4x4 pickup, 305 4 speed, PS, PB, radial tires, \$8,500; '82 Chevy C10 6.2 diesel 4x4, 3 speed w/overdrive, PS, PB, radial tires, \$7,950; '82 Chevy C10 1/2 ton pickup, 305, 4 speed, PS, PB, radial tires, \$5,150; '82 Chevy 1/2 ton 6 cylinder 3 speed, AM/FM, \$5,150. 717-733-2873.

'83 Ford F250 1/2 ton pickup 300, 6 cylinder, heavy duty, 4 speed, PS, PB, 10,000 miles, \$7,150; '83 Ford F150 Explorer 1/2 ton pickup, 300, 6 cylinder, 3 speed w/overdrive, PS, PB, 2,000 miles, \$7,500. 717-733-2873.

For Sale - 20' stake body (1) 2 speed rear end. Various International parts for 1600 and 1700 series. 215-377-4549. Call evenings.

1978 GMC Window Van, 8 passenger, 400 engine, auto., 79,000 miles, heavy duty trailer package, black, nice, \$4,950. 717-733-0623 or 717-733-0633.

EZ dumper bed portable dump bed for pick-up truck. Will lift approximately two ton. Runs off truck battery. Sides onto bed of pick up truck, \$400. 717-243-2233 after 5 p.m. 717-258-3681.

STORAGE TRAILERS FOR RENT - 40 ft., nice, available immediately, delivered. Office trailers also available. 301-771-4529.

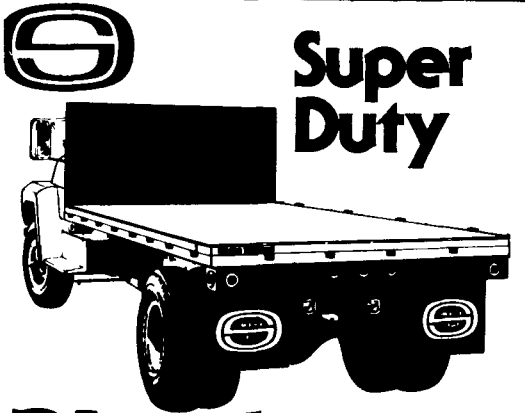
**TRUCKS & TRAILERS**

Stock trailers, new Mority 10 ft., \$2,150; 12 ft., \$2,350; 14 ft., \$2,550. other sizes available; Used 10 ft. stock, \$1,300; 2-horse with dressing room, \$1,900; 18 ft. used gooseneck, \$2,500. Lewistown 717-242-0941.

78' White, big cam, 350 Cummings, 40,000 miles on overhaul, Jake brakes, 9 speed, 10x22 radial tires, 38,000 lb. rears, 4.11 ratio, 4 spring suspension. Truck in real good shape. Also 10' Stoltzfus lime spreader with sowers, excellent condition. Also lime trailer available. Good condition. Pup trailer. 717-524-7204.

- 1983 Dodge 400 2 door, front wheel drive, 19,000 miles, one owner, with air, 5 speed.
- 1977 Volari 2 door, 6 cyl. w/air, SPECIAL \$1995.
- 1978 Dodge club cab, 4WD w/cap & insert, automatic, power steering, power brakes, SPECIAL \$3295.
- 1979 B-100 Sportsman, one owner, 6 cylinder, green.
- (2) 1983 Aries 4 door w/air, low miles.
- 1978 W150 4x4 regular cap.

**PETTICOFFER DODGE, INC.**  
Route 230 East Next to Shopping Center  
Elizabethtown, PA  
PHONE 717-367-1808



**Super Duty**  
**Platforms and Bulkheads**

Ideal for lumberyards, contractors, utilities, oil field operations and fork lift applications involving heavy loading The Omaha Standard platform is a full 96" wide and available in standard lengths from 12'6" to 26'6" Floor options include wood, steel or steel over wood Heavy duty structural steel channel throughout, with 6" outrail and 4" cross sills Stake pockets of 3/16" steel placed on 24" centers and sized to fit 2 x 4" stakes, with a steel banding rail welded to the outside of the stake pockets for securing the heaviest loads Steel stake racks are also available

The full clearance bulkhead is constructed with 4" channel stakes and 10 gauge steel and features a full width steel mesh window Tackle the tough jobs, team up with Omaha Standard's Super Duty Platform and Bulkhead

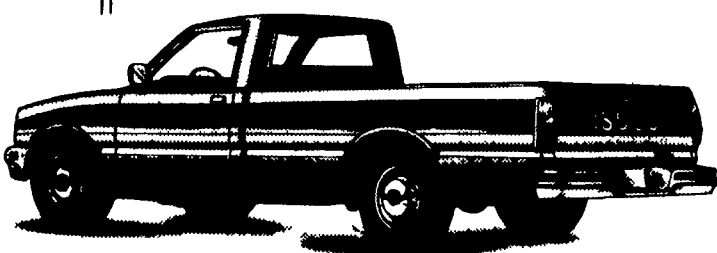
**FARMERSVILLE EQUIPMENT INC.**

RD 4, East Farmersville Road  
Ephrata, PA 17522  
Located in the Village of Farmersville,  
Lancaster County  
**717-354-4271**

**Omaha Standard**

**FAULKNER**

**NOW'S THE TIME TO DRIVE A TOUGH BARGAIN**

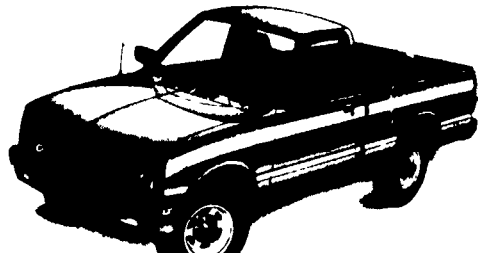


**84 LONG BEDS**

**\$5896\***

\* Optional Equip. if any, title, taxes and dealer preparation additional

FREE OLYMPIC TV Viewer's Guide  
Just For Taking A Test Drive



**GREAT SELECTION  
GREAT PRICES  
GREAT TRUCKS**

**WE BELIEVE IN ISUZU . . . DRIVE ONE AND YOU WILL, TOO!**

Rt 30 & Rohrerstown Rd.  
Lancaster  
**299-0961**  
Monday thru Friday 9 to 9  
Saturday 9 to 5

• ISUZU

**FAULKNER**

