

Pa. ranks second in ice cream production

HARRISBURG — Pennsylvania plants manufactured 77.1 million gallons of ice cream during 1983, up six percent from 1982, ranking the state second in the nation in total ice cream production. California was the leading ice

cream producing state with a total production of 101.1 million gallons.

Ice milk production in Pennsylvania during 1983 totaled 14.3 million gallons, up five percent from 1982. Pennsylvania ranked fourth in the nation in ice milk

production following California, Ohio and Illinois. Milk sherbet production at 3.7 million gallons was up two percent from the previous year ranking the Commonwealth third in the nation following California and Texas.

Other frozen products totaled 2.0 million gallons, up six percent from 1982.

Dairy plants in Pennsylvania produced 72.3 million pounds of butter during 1983, up nine percent from 1982. Creamed cottage cheese


production at 43.4 million pounds was down one percent, and lowfat cottage cheese production at 19.6 million pounds was down four percent from the previous year.

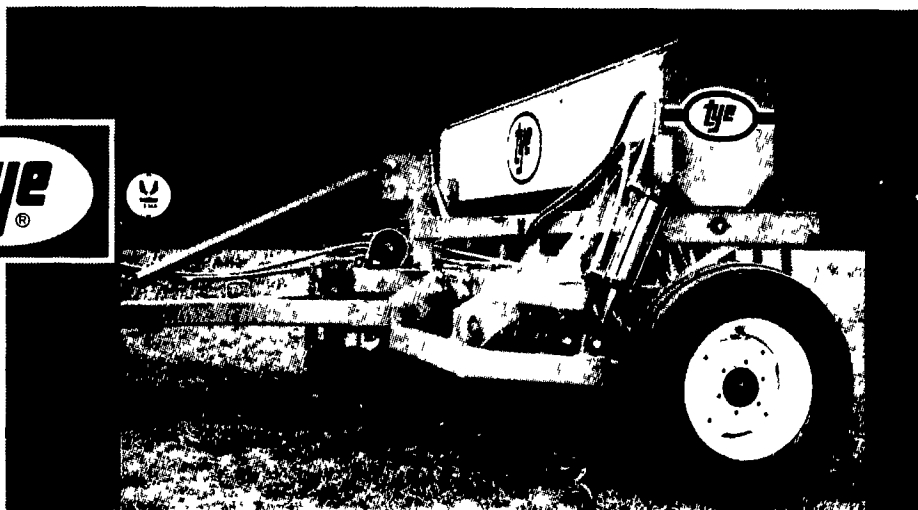
Production of cheese, excluding cottage cheese, totaled 147.5 million pounds in 1983, up 16 percent from the previous year. Mozzarella production at 45.4 million pounds was up 21 percent from 1982 while production of other types of Italian cheeses at 28.8 million pounds was up 13 percent. Swiss cheese production in 1983 was 6.7 million pounds, up 20 percent from the previous year.

Production of dry and condensed milk during 1983 and the changes from 1982 were: unsweetened condensed whole milk — 38.8 million pounds, down 19 percent; unsweetened condensed skim milk — 34.4 million pounds, down 20 percent; and nonfat dry milk for human food — 62.2 million pounds, up 12 percent.

During 1983 a total of 4.32 billion pounds of whole milk (equivalent) was used in manufactured dairy products in Pennsylvania with 36 percent used for the production of butter and 27 percent from freezer products.

For a big planting job with a small tractor

Hook up
to a 
10 foot
Stubble
Drill™



Tye's big 120" planting width and narrow transportable design make it a whole lot easier for a small tractor to perform large planting jobs

Tye's 10' No Till Drill is equipped with the same performance proven planting system that is standard on Tye Stubble Drill™ and Pasture Pleaser® models

1. Heavy-duty spring swivel coulters
2. Internally fluted seeders 3. Front seed delivery double-disc openers and 4. Press/depth control wheels

The 10' drill has fifteen openers, 8" row spacing and features similar to the popular Tye Pasture Pleaser®. The convenient 120" planting width complements the Tye No Till line of 80" Pasture Pleasers and the 160" Stubble Drills. Options include *

Choice of coulters

blades *

Wide variety of press/depth control wheels and *

Legume bluestem and fertilizer attachments

"For your nearest dealer, please contact —"
HAMILTON EQUIPMENT, INC.
Wholesale Distributors
567 South Reading Road
P.O. Box 478, Ephrata, PA 17522
PHONE: 717/733-7951

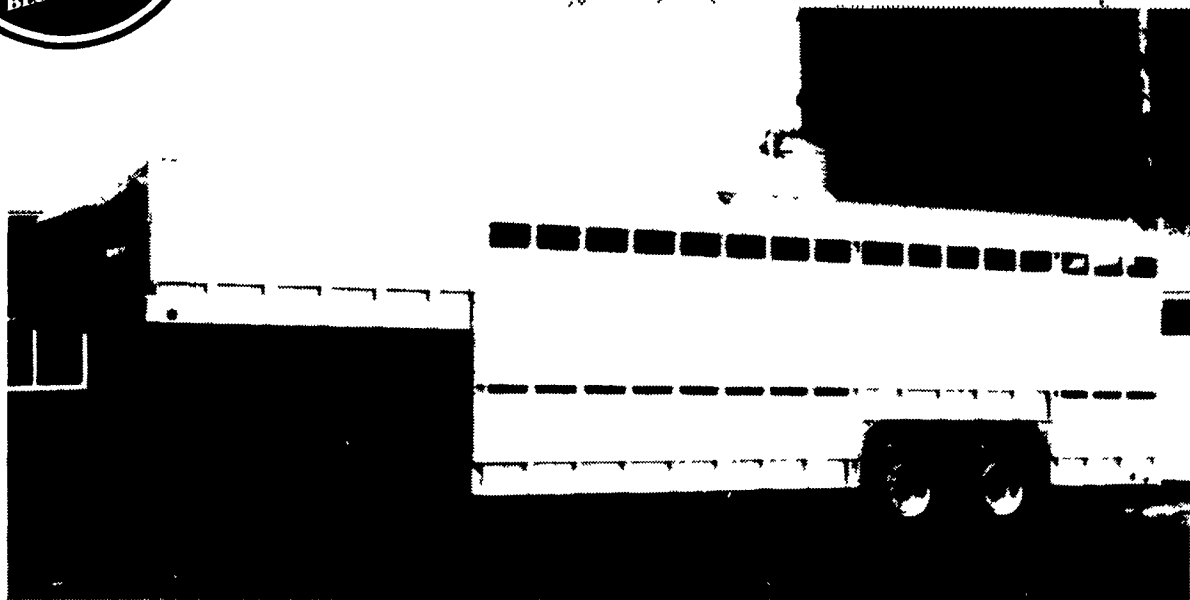
Tammy Cree on TV

LANCASTER — 1983 Pennsylvania Dairy Princess Tammy Cree will appear on the Pittsburgh Today Show on Wednesday, June 13. The show airs on Channel 2 between 2 and 3 p.m.

Tammy will make her appearance toward the end of the show and will talk about the "Real" seal.



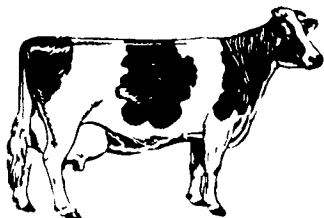
ALUMINUM GOOSENECK TRAILERS



20' Gooseneck Trailer

A versatile, lightweight, Eby aluminum stock trailer is built to provide years of maintenance free service. An Eby trailer is custom built to fit your individual hauling needs - No mass production! We use only quality components and strong alloy aluminum to manufacture what may be the last trailer you'll ever buy.

- **LIGHTWEIGHT** - Eby stock trailers are 25-35% lighter than comparable steel trailers. Less weight means better fuel mileage or increased payload.
- **MAINTENANCE** - Eby aluminum trailers won't rust. Welding and painting can cost you dollars in down time and repairs.
- **DURABILITY** - Eby trailers are built tough. Quality components and 6061 alloy aluminum provide the ruggedness required in a livestock trailer.



We Salute The
Dairy Farm Families,
A Vital Part Of
Our Business



CONTACT US

For
**MANURE HANDLING
EQUIPMENT**

Semi- and Liquid Spreaders -
Ground Driven - Easy Running
Priced Reasonably

PIT ELEVATORS

**ALLIS CHALMERS AND
WISCONSIN POWER UNITS
COMPACT ROTO BEATERS**



Smaller Improved Model
2 Sizes To Choose From

**HAND-O-MATIC BUNK FEEDERS
NOW IN STOCK FOR
EASY SILAGE DISTRIBUTION**

**PLATE SHEARING &
PRESS BRAKE WORK**

**COMBINATION MOWER
& CRIMPER UNITS**

**SMUCKER
WELDING & MANUFACTURING**

2110 Rockvale Road
Lanc, PA 17602
PH (717) 687-0772

M.H. EBY, INC.

Box 127, Blue Ball, PA 17506

717-354-4971

