

# Dairy and Livestock Sales

## Public Auction Register

Closing Date Monday 5 00 P M  
of each week's publication

FRI JUNE 29 5 30 PM  
Gap Auction Antiques and Household Goods sold at every auction Located off Rt 41, Lancaster Turkey Hill Minit Market, cross RR bridge, Ira Stoltzfus & Son, Auctioneers

SAT JUNE 30 - 11 AM  
Public Auction of Horses Located at Keister's Middleburg Auction Sales, Inc. Rt 555, 3 mi east of Middleburg, PA, 5 mi west of Selinsgrove, PA Don and Walt Keister, Owners Ray Long and Dave Imes, Auctioneers

SAT JUNE 30 - 6 PM  
Public Auction of Arnold's 32nd Sale of Bred & Open Gilts and Boars Located at the Lebanon Fairgrounds, Lebanon, PA Harry Bachman, Auctioneer

SAT JUNE 30 9 AM  
Public Auction of Household Goods, Antiques & Coins Located at the Denver Fire Hall, 425 Locust St., Denver, PA Harry S Stoner Estate George S Gehr, Irene M Matz & Clarence E Spohn, Executors T Glenn & Timothy G Horst, Auctioneers

### JULY

MON JULY 2 - 12 NOON  
Public Auction of Horse Farm, Race Horses, Horse Equipment & Farm Equipment Located from Easton to Denton, take Rt 328, leaving Easton Go about 2 miles to Black Dog Alley Rd Turn left Follow signs Don & Dale Milby, Owners Carroll's Sales Co., Auctioneers

TUES JULY 4 - 9 AM  
Antiques & Collectibles, Farmersville Auction in Farmersville, 3 mi East of Brownstown, Lancaster County, Pa John J Rutt, Auctioneers

THURS JULY 5 - Monthly  
Cow Sale at Mel Kolb, Inc Lancaster Farm, 2220 Dairy Road, Lancaster, PA

FRI JULY 6 7 PM  
Horse Sale at New Holland Sales Stables, Inc 12 miles east of Lancaster off Rt 23 in New Holland Pa Abe Diffenbach, Manager

SAT JULY 7 - Public Auction of Real Estate Located at Lack Twp., Juniata Co., 20 miles south of Mifflin along Rt 35 William J Owens Estate Bryan D Imes, Auctioneer

TUES JULY 10 4 PM  
Farmersville Auction in Farmersville, 3 mi East of Brownstown, Lancaster County, Pa John J Rutt, Auctioneers

FRI JULY 13 1 30 PM  
Public Auction of State

Grade Consignor Feeder Pig Sale Located at the Carlisle Livestock Market, Inc

SAT JULY 14 - Public Auction of Real Estate & Farm Machinery Located at RD 2, Port Royal Harvey J Stake Estate Bryan D Imes, Auctioneer

SAT JULY 14 - 10 AM  
Public Auction of a 23 Acre Farm, Household Furnishings, Antiques, Collectibles & Farm Equipment Located on

the east side of the Village of Lavelle Butler Twp. Schuylkill Co., PA 6 miles north of I-81, exit 35, 2 miles west of Ashland Watch for auction sign along Main St., Lavelle/Estate of Justina Stepanchick Robert B Sacavage & John Stepanchick, Co-Executors Mike Deibert, Auctioneer

TUES JULY 17 - 4 PM  
Farmersville Auction in Farmersville, 3 mi East of Brownstown, Lancaster County, Pa John J Rutt, Auctioneers

THURS JULY 19 - Monthly  
Cow Sale at Mel Kolb, Inc., Maryland Farm, Woodsboro, MD, 1/2 mile North West of Woodsboro on Rt 550 in Frederick Co

## LARGE HOLSTEIN DISPERSAL

On the farm located on Beatty Road off Houck's Mill Road, three-fourths of a mile west of Route 146 in Harford Co., Md. From Jarrettsville take Route 23 west to Madonna, go south on Route 146 to Houck's Mill Road. From the Baltimore Beltway take Route 146 north 16 miles to Houck's Mill Road.

**TUESDAY, JUNE 26, 1984**  
10:00 A.M.

**182 HEAD OF HOLSTEINS**

**91 Cows - 91 Heifers**

**108 Registered - 74 Grades**

(Most of the grades have been identified with the Holstein Assn.)

**DHI Records - Tested for Interstate Shipment**  
**Pregnancy checked - AI sired and bred**

- 6 selling have over 800F
- 12 selling from 700F to 800F
- 15 selling from 600F to 700F
- 7 selling from 22,000M to 25,000M
- 8 selling from 20,000M to 22,000M
- 19 selling from 16,000M to 20,000M

### THE COWS

A summer and fall freshening herd with 80 head due June through December. It is a young herd including many first-calf heifers. The cows have lots of dairy character, and are an extremely good uddered group. They have never been classified, but a number of them will score well. Quite a few are sired by Sire Power bulls for several generations. Eleven are bred to Chairman, 10 to Spirit, 12 to Standard. There are 11 Jet Streams and 15 Legacy daughters selling. There is a nice red and white cow and a number that could carry the red factor.

### THE HEIFERS

All born and raised on the farm and all AI sired by Sire Power bulls including 3 by Chairman, 4 by Wiseman, 3 by Lone Ranger, 14 by Legacy, 5 by Trump, others by Bubbler, Jet Stream, Noah, Creek, etc. Twenty-one are bred, many ready to breed this fall and the rest younger. All but a few are vaccinated, and they will make excellent herd replacements either registered or grade.

### THESE SELL:

Reg. Jet Stream dtr.	4-3	365	24,050	3.7	888
Reg. Jet Stream dtr.	5-3	365	23,000	3.5	795
Harrisburg Gay Ideal dtr.	5-6	365	21,550	3.5	759
Lucky dtr.	5-9	347	19,760	3.7	731
Edson dtr.	3-2	365	20,420	3.5	725
Grade Elevation	5-0	364	25,000	3.2	799

**Terms: Cash or Good Check**

**Catalogs at Ringside**      **Sale in Tent**  
**Lunch Available**

**Owners**

**FRANK B. & PHILIP L. OBER**

**3821 Beatty Road**

**Monkton, MD 21111**

**Ph. 301-557-7141 (Frank)**

**301-557-7727 (Philip)**

**Sale Manager**

**REMSBURG SALE SERVICE**

**P.O. Box 177**

**Jefferson, MD 21755**

**Ph. 301-473-8214**

## FEEDER PIG AND

## CATTLE SALE

**SATURDAY NIGHT - JUNE 16**

**6:30 P.M.**

**Keister's Middleburg Auction Sale, Inc. Rt. 522 3 miles east of Middleburg, Pa. 5 miles west of Selinsgrove, Pa.**

For information call: 717-922-1490 or 717-837-2222 or 717-523-0360

**Keister's Middleburg Auction Sales, Inc.**

**Rt. 522 RD 3 Middleburg, PA**

**Owners,**

**DON & WALT KEISTER**

**Ray Long and Dave Imes,**

**Auctioneers**

**Terms: Cash**

**Trucking Available**

**Restaurant Open**

## NEW HOLLAND SALES STABLES ANNUAL REGISTERED HOLSTEIN HEIFER SPECIAL

**SATURDAY, JUNE 23, 1984**

**10:00 A.M.**

**Barn located 12 miles east of Lancaster, Pa. off Route 23.**

### 300-400 HEAD SELLING

**Heifers all ages from small calves to fresh heifers. Many with full pedigrees. High production and classified dams. This is a sample of some animals selling from some early consignments.**

Dr Keith Olin is selling a yearling Chairman dau, her dam a VG Astronaut with 3 yr 21,360m and 749F Gr dam VG 88 5 yr 18,790 4 2, 784F 3rd dam VG 5 yr 21,548 & 736F She has 3 VG dau all with EX Mam

Danny Albright is sending several nice heifers including

- (1) March 83 Lime Hollow Elevation Mars, her dam 3 yr 18,380-609F
- (2) Chairman born Nov 83 her dam a VG Jupiter, 2 yr gr dam VG 86 Pt Elevation with 27,000m & 1074F
- (3) Wileida Cit R her dam a VG 2 yr old with 14,380 3 9 test Gr dam VG 86 pts over 18,000M
- (4) A Pac Astronaut born March 83 her dam a 2 yr old Marvex with 14,000 and Gr Dam G P with 27,000M A CALILL Standout Cavalier bred heifer, her dam VG86, 23,000M, 2nd Dam
- (5) VG 22,000 3rd dam VG 18,000
- (6) A bred Harrisburg Gay Her dam VG 87, 22,530 and 804F 2nd dam VG 26,220 839F
- (7) 2 other Willedas sell as bred heifers Dam G P 21,033 & 767F Gr Dam Willsholm Rag Apple Eve, Ex-90 (Full sister to RORAE), with 5 yr 22,360 & 1113F 3rd dam 94-4E 8 yr 26,126 4 1% 1082F The other bred heifer her dam 87 pt 5 yr 27,096 972F

**From Stonehurst Farm- Strasburg, Pa.**

### 40 Animals Selling.

- 1 A Very dau sells short bred, her dam and Gr Dam both Excellent 90 Pts with rec to 23,000M
- 2 An Elevation dau due sale time to Milestone, her dam a GP82 Conductor records to 19,600M, Gr Dam a Charm Cross VG 87 with up to 21,000M
- 3 Quality Ultimate dau (bred heifer) her dam a Fond Matt with records 25,000m 4 3 over 1000F
- 4 Lime Hollow Elevation Mars from a VG 87 Pt Jet Stream with 18,000m & 4 1 test  
**2 RED & WHITES**
- 5 A Fancy Red Triple Threat due sale time
- 6 A top Red Agro Acres Marques Ned bred to Glenafton Enhancer

**Several breeding age bulls (25 calves & heifers) consigned by Bright Meadows Farm, Lancaster, Pa.**

- 1 Persuador calf from a 2 yr old dam with 15,025 & 566F
- 2 A Tradition from a G P dam 5 yr 316 23,540 885F
- 3 A Very calf Gr Dam has 18,206 689
- 4 A Lime Hollow Elevation Mars calf born April 1984 from a VG dam with 305D 22,240 & 824F

### Fancy Bred Heifers

- 1 A Glendell due July to Tony Her dam G P 5 yr 328D 19,870-783F Gr Dam Ex Elevation 5 yr 23,440 979F 3rd dam a G P King Pin with over 19,000M
- 2 A Sexation due sale time to Burkgov Demand Her dam G P 83 Jerry dau with 2 yr 15,660-581F Gr Dam (EX) 4 yr 301D 22,910M 910F 3rd Dam VG
- 3 A Marvex due August Her VG Dam 2 yr old 17,000 & 599F Gr Dam (EX) 2 5yr 350D 26,570-1004F 3rd dam a VG 88 Pt Ivanhoe 4 yrs 365D 25,850 & 921F
- 4 Fancy Jemini due July to Willeeda Her Dam a VG 2 yr old Willow 2 yr 365D 18,810 & 721F 2nd dam G P Elevation 3 yr 365D 17,908 668

**Out of state buyers need proper credit reference**



## GAP AUCTION

**FRIDAY EVE., JUNE 15**

**5:30 P.M.**

Located off Route 41 - Lancaster Avenue Opposite Turkey Hill Minit Market - Cross RR Bridge

**ANTIQUES AND HOUSEHOLD GOODS  
SOLD AT EVERY AUCTION**

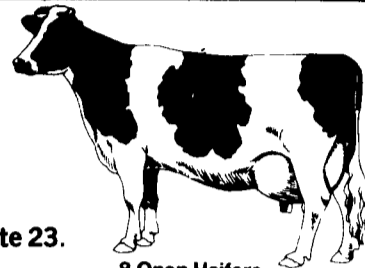
**CONSIGNMENTS ON MONDAYS  
FROM 8:00 A.M. to 7:00 P.M.**

**IRA STOLTZFUS & SON, Auctioneers**

**442-4936 or 442-8254**

**AU000907-L**

**CONDUCTORS ALL TYPES PUBLIC SALES**



**8 Open Heifers**

**Consigned by Henry Kettering**

- 1 7-25 83 Main Stream ET by Glenndale, Dam Ivanhoe Star 4 yr proj 17,982 3 9 703  
2nd Dam 3-21,256 3 8 801  
3rd Dam 6-20,010 4 0 805  
4th Dam 20,040 3 4 689  
5th Dam 21,790 3 7 9828
- 2 11-26-82 Chairman Dam 17,000 3 53 600 by Elevator
- 3 10-23-82 Chairman Dam 18,000 3 61 650 by citation Sovereign
- 4 2-8-83 Fury Ivan Dam 19,000 3 9 750 by Shine Twin
- 5 11-11-83 Chairman Dam Grand Fortune, 2 year proj 16,890 3 78 639, 2nd Dam Willow 3 yr 340 18,000 641 3 9 729 proj 5 yr 305 20 978 3 83 804
- 6 10-6-83 Columbus Dam Astronaut proj 4 yr 305 18,180 3 6 652, 2nd Dam Fond Matt good +84, 2 yr 295 13,810 3 7 506
- 7 8-21-83 Columbus Dam Good +82 Kilroy 4 yr 302 17,372 3 7 638, 2nd Dam 2 yrs 296 14,340 4 6 653, 3rd Dam 4 yrs 305 16,780 4 6 774
- 8 2-3-83 Elevation Lester Dam Good + Court down 4 yrs 305 19,790 3 4 674

**Some fancy animals in these consignments Real show prospects and some show age calves.**

**Most animals callhood vaccinated and tested for out of state shipment.**

**Local Motels and (Trucks available to go anywhere.)**

**Catalogues on Sale day**

**Sale Mgd. by**

**NEW HOLLAND SALES STABLES, INC.**

**Contact:**

**Abe Diffenbach- barn office 717-354-4341**

**Norman Kolb- 717-397-5538**

**Pedigrees**

**Henry Kettering- 717-569-0675**

### SPECIAL NOTICE

### COMPLETE DISPERSAL

### OF MILK-E-SPRING HEIFERS

**All heifers sell up to freshening 1983 herd ave on 55 cows- 18,602 & 639F. This herd includes 22 V.G. cows. Protein 3.2. Sires include 9 Chairman, 2 Ace, 1 Arlinda Chief, 4 Peach Chief Robin Hood, 2 Achilles, 2 BrownDale Commodore, 2 Elevator, 6 Glen Ridge Cita. 9 bred heifers sell. 26 open heifers from 1 mo. to 1 year. 3 service age bulls.**

- 1 Elevation son form 23,000 dam
- 2 Chairman (twins), their dam 28,000 & 1000
- 1 Glenridge Citamatt dau born Oct 83 Her dam VG87 Pt Arlinda Chief 324d. 24,904m 1027f 4 1 Over 150,000 Lifetime for 4% test
- 2 Chairman calf born Nov 83 Her dam Marvex 88 Pt 3 yr old Ex Mam 2 yr old 379d 26,069m 771f Gr dam VG Dina Charm with over 20,000
- 3 An Knoll top Rickers Ace Calf born Feb 84 her dam 88 pt 4 yr old Astronaut with over 20,000 Gr dam G P with 24,000 3rd dam VG Performer with good records
- 4 An Aug 83 Ace dau from a 86 pt Samson with 362d 26,638m 4 0 1067f
- 5 Creek dau due Sept to Chairman from a VG Elevation
- 6 A Chairman calf bor Dec 1983 Her dam G P 82 Marvation with 3 records 20,000 to over 26,000 as a 3 yr old Also Elevate dau sells bred due late fall from same dam as above
- 7 Rag Apple Achilles born Sept 1983 Her dam G P 83 Wayne dau with 365d over 22,000 as a 3 yr old Next dam 88 pt Elevation with 20 000 3rd dam G P King Pin

**Owner:**

**BEN F. STOLTZFUS**

**Ronks, Pa.**

**This consignment will sell at 11:00 A.M.**

**This is an opportunity to buy heifers from this fine Lancaster Co. herd**