

This is the new portable hog nursery from Luco Manufacturing.

Hog Haven line expanded

STRONG CITY, Ks. — A new portable hog nursery has been introduced by Luco Manufacturing. In addition to providing a clean, mud-free environment for 125 pigs, this latest building in the "Hog Haven" line offers a number of unique features.

The 12' by 24' fully insulated steel building is partitioned into four pens, each with a front opening gate, covered by a steel panel. Above each gate a hinged fiberglass panel helps minimize temperature extremes. It can be opened or easily removed to allow ventilation in hot weather, or closed to admit solar heat in the winter.

A wire mesh floor keeps pigs on a

clean surface, and because the Hog Haven Nursery is mounted on steel skids, it can be moved easily from place to place as needed. The Hog Haven buildings are manufactured by Luco Manufacturing, Strong City, KS 66869.



Group says:

'Get government off farm'

WASHINGTON, D.C. — The United States Business and Industrial Council has asked President Reagan to chart a bold new direction for U.S. agricultural policy.

In a letter to President Reagan from F.M. Stevenson, Chairman of the fifty-one year old national business organization, the USBIC charged that the American farmer was in danger of surrendering his economic freedom to central government planning of agriculture.

USBIC's letter to the President was accompanied by a copy of a report produced by the organization's Task Force of Agriculture, "White Paper on American Agriculture: The Government on the Farm."

USBIC Task Force Chairman Theodore M. Schad, President and Chief Executive Officer of Lou Ana Foods, Opelousas, Louisiana, emphasized the need to reverse U.S. Farm Policy:

"The government has clearly become the dominant player in the farm game. No other sector of the free market has been subjected to central government planning to the degree agriculture has.

"While the taxpayer has been burdened with supporting a farm subsidies program that has doubled from \$10.6 billion in 1982 to \$21.8 billion in 1983, the net income of the farmer has witnessed a dramatic decline from \$32.4 billion in 1979 to \$19.5 billion in 1983.

"For years our country's largest industry — agriculture — has been victim of a national industrial policy orchestrated by central government planning.

"The experience of U.S. agriculture is a story of what occurs when you allow government planning of an entire industry. The decline in farm income during the past decade has been much more severe than the decline of our other basic industries such as steel and automobiles. This should serve as a lesson to those who would like nothing better than to have a national industrial policy with the government calling the shots imposed on other basic American industries."

Schad explained that USBIC's White Paper documents the expansion of the government's role in farming and the hurtful effect government policies are having throughout the industry.

"Our report provides a case

study of the government's mismanagement of the payment-in-kind (Pik) program. It reveals why this much heralded program has created disillusionment and bitterness among farmers and taxpayers alike."

Schad highlighted the key recommendations called for in the USBIC White Paper.

* A reduction in support prices for all commodities.

* An elimination of acreage restrictions.

* An investigation by the Government Accounting Office into the lending policies of the Farmers Home Administration.

* An immediate halt to federal export credit at below market rates through the Commodity Credit Corporation.

"As one of the country's oldest business groups — and as an organization committed to free enterprise — we deplore the decline of our country's oldest and largest industry, agriculture.

"We view this decline as directly linked to the heavy hand of government planning. If we are going to reverse the plight of American agriculture, we must get the government off the Farm," Schad concluded.

KEISTER'S 3rd ANNUAL "Pennsylvania Agriculture Day"

TUESDAY, JUNE 12, 1984 10:00 a.m. - 8:00 p.m.
UNDER THE TENTS....

The Best of Pennsylvania
Agriculture on Display!!!

PA. AGRICULTURE
QUEENS
Beef Queen, Dairy
Princess and
Many More

APPROXIMATELY
40-50 MEAT PACKERS &
FARM ASSOCIATES
PARTICIPATING
WITH DISPLAYS

HORSE PULLING
CONTEST
AT NOON



Entries Welcome
Cash Prizes &
Trophies

PLENTY
TO EAT
(outdoors)

- ★ Beef Roast
- ★ Pork Roast
- ★ Chicken Bar-B-Que
- ★ Rabbit Bar-B-Que
- ★ Homemade Potato Chips

Much More

GIANT
LIVESTOCK
AUCTION
BEGINS
AT NOON



Advance
Reservations Only

DOOR
PRIZES

PLENTY OF
FREE PARKING

Favor Your Neighbor...
Buy Pennsylvania Foods

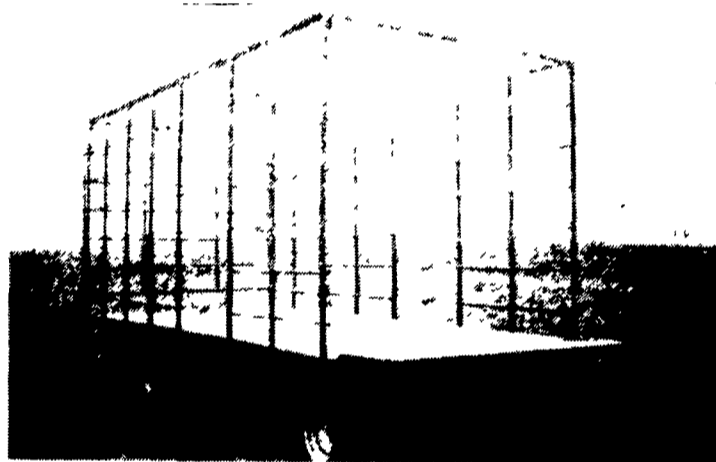
PENNSYLVANIA AGRICULTURE



WE'RE GROWING BETTER

HAY WAGONS FOR SALE

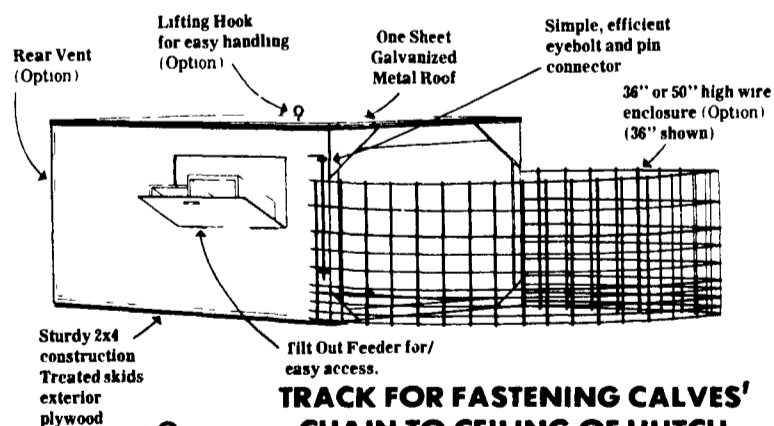
Wood or Steel



3 Sizes Available...16', 18', 20'
with or without running gear

• Also will fit sides onto your flat wagon

Compare the Stoltzfus Woodwork Calf Hutch



TRACK FOR FASTENING CALVES'
CHAIN TO CEILING OF HUTCH

Berks County:

JOE RUTH

RD #4133 Fleetwood, Pa 19522
215-944-7571

Adams County:

HAROLD DEARDORFF

Rt. 1, Fairfield, PA 17320
717-642-8722

Maryland:

LEROY HILDEBRAN

Woodsboro, Md
301-845-8929

MFD.
BY:

STOLTZFUS WOODWORK

RD 2, Box 2280, Gap, PA 17527
717-442-8972

KEISTER'S MIDDLEBURG AUCTION SALES

Route 522 - 3 Miles East of Middleburg, PA

Phone (717) 837-2222 or (717) 837-2512