

GRAIN EQUIPMENT

GRAIN EQUIPMENT

For Sale - California pellet mill, Roughinger model, capacity 9 ton per hour, good condition, 717-865-6611

GRAIN EQUIPMENT

18'x6 ring grain bin with floor and fan, 6'x3' ring feed bin, 6'x42' PTO transport auger, Papec grinder mixer 717-586-9503

For Sale - recirculating batch grain dryer GT model 370, excellent condition, 350 bushel capacity, \$4,600 York County 717-382-4233

Mordige 400 bushel grain dryer, excellent condition 717-529-2571

DAIRY EQUIPMENT

Lehigh 5 h.p. compressor complete w/single phase motor, no longer needed Make offer Call 301-398-2948.

For Sale - 1 1/2" SS Pipeline, 44 stallcocks, 2" vacuum line Delaval stallcocks, pulsator timer, 76 vacuum pump. Also Patz barn cleaner, 230 feet, new chain, right hand drive unit and wheels, Jamesway water bowls, fans, gates 717-933-5935

3 HP Universal compressor used 2 years, less motor, \$300 Call after 5:30 PM 717-597-4542.

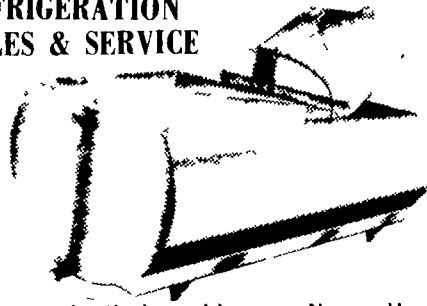
Surge 12 stall Tr-Gon milking parlor w/air controls, new condition, used 2 months. 800-222-2948.

160 Fry Brothers free stalls. You remove, \$11.00 each. Lancaster County. Call 301-398-2948.

DAIRY EQUIPMENT

DAIRY EQUIPMENT

REFRIGERATION SALES & SERVICE



When you're thinking of buying a New or Used Bulk Milk Cooler, please call and we will give you a price

The following list of Used Coolers are available now or in the near future Call us for date of availability

USED TANK SPECIALS

- (1) 500 Gal Jamesway
- (1) 500 Gal. Girton
- (1) 600 Gal Milkeeper
- (1) 600 Gal Mojonnier
- (1) 600 Gal. Surge
- (1) 735 Gal Sunset
- (1) 800 Gal Surge
- (1) 900 Gal OH Mueller
- (1) 1000 G. ~~SOLD~~ set
- (1) 1250 Gal. Dari-Kool
- (1) 1250 Gal DeLaval
- (1) 1500 Gal Dari-Kool

USED COMPRESSORS

- 3 HP Lehigh
- 3 HP Te ~~SOLD~~ seh
- 4 HP Te ~~SOLD~~ oh

Complete Sales & Service

REFRIGERATION SALES & SERVICE

Box 67, Intercourse, PA 17543
Ph. (717) 768-9006 or (717) 768-8333
Answering Service - 717-354-4374
★ 24 HOUR SERVICE

DAIRY EQUIPMENT

DAIRY EQUIPMENT

USED EQUIPMENT SALE

Bulk Cookers

- 1 - 350 gallon flat top Mojonnier with 3 h.p Brunner compressor \$995.00
- 1 - 300 gallon Jamesway with 3 h.p. Brunner compressor \$950.00
- 1 - 400 gallon round Mojonnier with 3 h p. Lehigh compressor \$1,450.00
- 1 - 500 gallon Esco (good for water only) \$300.00
- 1 - 1250 gallon Surge with dual 4 h.p./units and energy conversion \$9,400.00

Transfer Systems

- 2 - Surge Dumping Stations, operates by vacuum \$520.00 ea
- 1 - Sputnik with air compressor \$895.00
- 1 - Sputnik without air compressor \$550.00



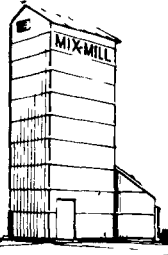
602 MAIN STREET P.O. Box 158
BALLY PA 18503 Phone (215) 845-2261

Modern grain handling and storage facility

in the heart of Bradford County dairy industry. 350,000 bushel capacity, including high moisture corn storage. Elevator leg, grain dryer, 60' truck scales and office. Opportunity to work with young energetic feed consultant with established business. Priced to sell. Terms may be arranged. Take advantage of the upswing in our economy. Call today 717-297-2821

New Four Compartment 40 ton feed factory \$8,100
65 ft. 8 in. transport auger \$1,100

HERSHEY FARMS
R.D. 1 Box 139
Marietta, PA 17547
717-653-8783



DAIRY EQUIPMENT

DAIRY EQUIPMENT

Clip & Save

POLY DOME CALF NURSERY

"The Igloo"



The Poly Dome calf nursery is the answer to many of the problems associated with calf hutches.

- 1) They are light weight but need no staking down
- 2) They are durable with no up-keep.
- 3) They have an adjustable vent
- 4) Feeding is simplified.
- 5) they are economical.

Dealer inquiries welcomed from certain areas.

Call or Write

Or Dealers

Distributor

Earle M. Zimmerman
1478 Colebrook Rd.
Lebanon, PA 17042
1-(717) 272-3558

Shippensburg
Tim Zimmerman
717-532-4183

Ephrata
James Sensenig
717-733-7466

Quarryville
John Edward Weaver
717-786-3992

Clip & Save



NEW LIQUID MANURE EQUIPMENT FOR SALE OR LEASE

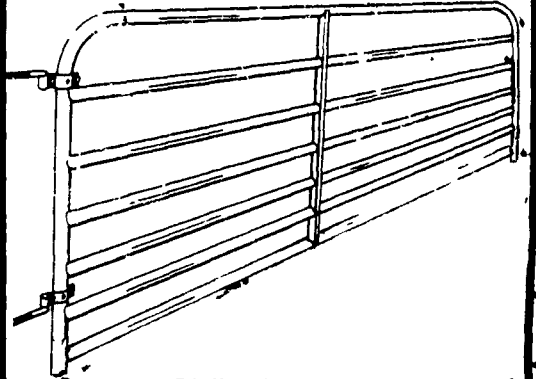
- Spreader Tanks - 2250 Thru 6500 Gallons
- Vacuum Tanks - 1500 Thru 4500 Gallons
- Earthen Pit Pumps
- Vertical Shaft Pumps
- Truck Mount Tanks - 2250 Thru 4500 Gallons
- Propeller Agitator
- Replacement Vacuum Pumps- 177 Thru 353 CFM's

F. ERNEST SNOOK

RD 3, Box 84, Mifflinburg, PA 17844
PH: (717) 966-2736

"WE'RE HERE TO SERVE YOU"

TUBULAR STEEL GATES



Seven 1-5/8" I.D. horizontal tubes spaced closer at the bottom for a pig tight gate. 50" high with adjustable clamp style hinges. All hardware needed for a complete installation is included. Painted finish.

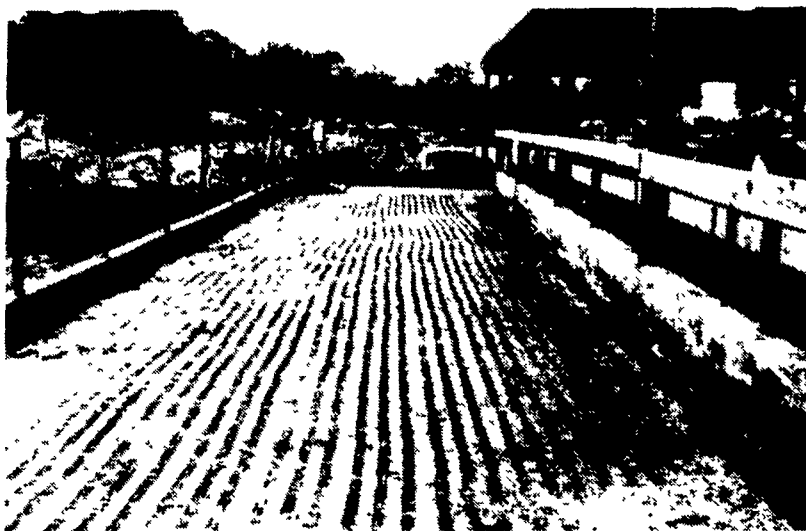
- 4' Length \$36.95 12' Length \$45.95
- 6' Length 39.95 14' Length 52.75
- 8' Length 41.45 16' Length 55.50
- 10' Length 43.95

ZIMMERMAN'S ANIMAL HEALTH SUPPLY

RD 4, Box 141, Lititz, PA 17543
Located 3 miles west of Ephrata, 1/4 mile South of Rt 322 along Wood Corner Road
(717) 738-4241

IS SLICK CONCRETE A PROBLEM ON YOUR FARM?

Now you can rent our re-surfacing equipment to return your concrete to safe and comfortable conditions for your cattle. The equipment produces a 2 1/4 inch wide band approx. 2 1/4 inch apart. This preserves enough smooth surface for easy scraping and enough rough surface to give surefootedness for your animals. Greatly aids in heat detection. We offer "at your door service" in a 10 state area. Prices are reasonable. Please call us collect for more details anytime except Sunday. Call 301) 790 1303 collect.



SILAS MARTIN MGR.

Suburban Rentals Inc.
Hagerstown, Maryland

JONES DAIRY SERVICE

The Computer Center For The Dairy Farm

Call Us Now

- * Milking Computer
- * Feed Computer

Big Savings
New Double Four Parlor
New Electric Crowd Gate

USED EQUIPMENT

- * 1 1/2" Pipeline
- * 600 gal. Majonnier Tank
- * FR4 Vacuum Pump
- * Bou-matic Wide Claws
- * 3 HP, 1 PH Condensing Unit
- * 3 HP, 3 PH Condensing Unit
- * "Little Champ" Detacher
- * Bou-matic Detachers

BUCKY JONES

Fostertown Road
Medford, NJ 08055
609-267-0198

