

# Krueger family aims to do it again

named champion at the Angus Breeders Show, the American Royal in Kansas City, and the Eastern National Livestock Expo, all in 1983.

An accomplished show judge, Krueger is generally pleased with his chosen breed's direction during recent years.

"Angus cattle have exploded in skeletal growth during the past few years," Krueger observes, "but although two to three years ago the emphasis was on size, we're now starting to look at femininity and structure."

"Some of the top Angus are up to frame-eights now, and the breed has the size without having to rely on the other breeds for terminal crosses."

"I think it's important to look for femininity at this point," Krueger stresses, adding that the trait relates to both fertility and milk production.

Molded through years of experience with show cattle, Krueger's ideas on how to build the perfect Angus may well influence the course of the breed in years to come. Last year Greg's judging responsibilities included the Canadian Royal Winter Fair in Toronto, and this year's schedule includes judging at the New York State Fair, the National Junior Showmanship Contest in Columbus, Ohio, and the Indiana State Fair.

Assisting Greg with Genetics Unlimited's beef operations is Dave Hirt, another Indiana native who manages the show and sell cattle. During the busy summer season, four students are hired as part-time members of the operation, as well.

A lifelong involvement with Angus cattle has cultivated Greg's commitment to breed promotion,

and the Indiana native is currently serving as a director in the Pa. Angus Association. Krueger is also this year's chairman of the Pa. Angus Breeders Show, and will host the Association's annual picnic on June 10.

With his Angus involvement demanding long hours, family support is a must. Greg's wife, Jane, a registered nurse and Purdue graduate, handles Fairview's bookkeeping chores including the necessary paperwork for Pride's semen sales.

In addition, she finds time to "ride herd" on the affairs of the family's future cattlemen, Erin



and Amy. At ages three and two, respectively, the two young Kruegers are already the proud owners of a pair of Fairview heifers.

Looks like the future of one of Pennsylvania's premier Angus herds is in good hands.



With the Krueger home overlooking the rolling Chester County countryside dotted with Angus cattle, Fairview Farm is aptly named.

string of heifers being readied for this year's show season.

During an inspection of the Fairfield facilities, Greg stops to take a look at Lucy, a classy daughter of Krueger's Foolish Pride. After having Lucy pose for pictures, Greg explains his show strategy.

"All of our show animals are walked one to two miles, and

rinsed and brushed every day. We try to have athletic-looking cattle," Krueger emphasizes. "Plenty of exercise allows us to feed a bit heavier, too, resulting in better gains."

Following the heifer tour, Krueger looks in on "the pride" of Fairview Farm, Krueger's Foolish Pride. Tracing his roots to Sayre stock, the April, 1981, bull was

## Holstein and Angus?



Holstein mothers with Angus offspring are a common sight at Fairview Farm. As a partner with Jim Evans in Genetics Unlimited, Krueger hosts many embryo transplant families on his 33 acre farm near West Chester.

ON MATERIAL\*



GRAIN DRYER BINS

BODY BUTLER

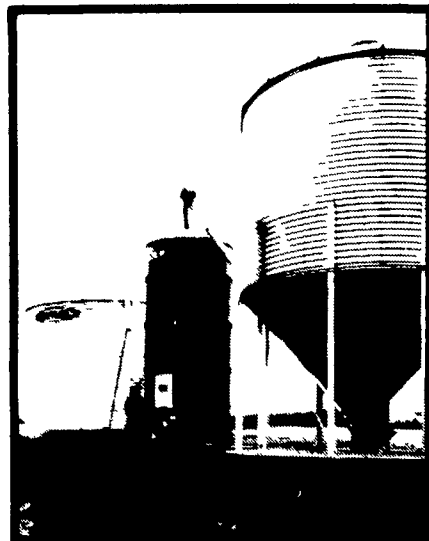
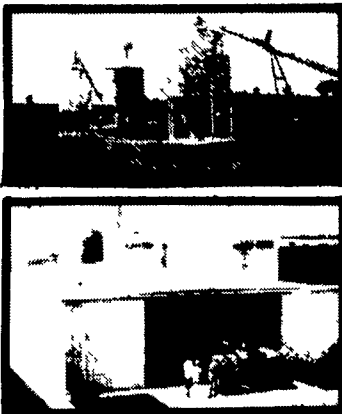
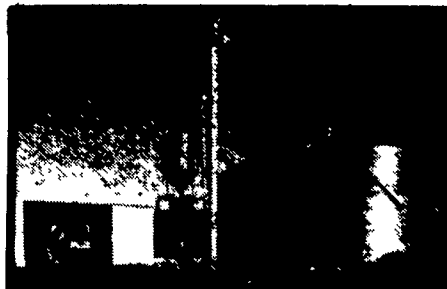
UCTS FOR 1984

ES Up To 100,000 -

With Wider Range

AM INSULATION

der For All Your Needs



SPECIAL PRICE

BUTLER 8-17-15 KAN-SUN CONTINUOUS FLOW DRYER

Price Includes Delivery And Start Up

BUTLER GRAINS BINS, GRAIN LEGS, KAN-SUN DRYERS

WAREHOUSE PRICES

from BUTLER — The #1 Bin Company

TRI-STATE MARINE DIST. INC. Route 256 Deale, MD 20751 PH 301-867-1447

KELLER BUILDING SYSTEMS INC. R D #1 Box 203 Lewisburg, PA 17837 PH 717-524-0568

RIGGS ENTERPRISES Box 98 Boswell, PA 15531 PH 814-629-5621

QUILL CONSTRUCTION CO. P O Box 6269 Harrisburg, PA 17112 PH 717-545-7527

W.R. MOODY, CONTRACTOR 113 Walnut Lane West Newton, PA 15089 PH 412-872-6804

FOUR COUNTIES CONTRACTOR R.D., Box 249 Coalport, PA 16627 PH: 814-672-5751

BINTRIM BUILDERS 204 Hoover Road New Castle, PA 16101 PH 412-924-2698

BEAVER CREEK LANDSCAPING CONST. CO. P O Box 151 Chestertown, MD 21620 PH. 301-778-4110

BUTLER MFG. CO. Attn. P.E. Hess P.O. Box 337, Oxford, PA 19363 I'm interested in more information on Butler products

Buildings  Bins  Dryers  Bulk-O-Matics

Name \_\_\_\_\_  
Address \_\_\_\_\_  
County \_\_\_\_\_ Zip \_\_\_\_\_  
City \_\_\_\_\_ State \_\_\_\_\_  
Phone \_\_\_\_\_ (include area code) LF