

Helping people help themselves

(Continued from Page E7)

Advanced Study at the University of Wisconsin. He received a Ph.D. from there in 1958 and the following year was named assistant director of the Cooperative Extension Service. He was promoted to associate director in 1961, and became director a year later. In that capacity he has guided extension agricultural, home economics, 4-H and rural development programs for more than two decades.

Over the years Gwinn has served on many local, regional and national committees, including the Governor's Emergency Planning Committee, State Agricultural Stabilization and Conservation Committee, State Forestry Advisory Committee, and Agriculture and Food Council of the U.S. Department of Agriculture. He also served two terms on the national Extension Committee on

Organization Policy (ECOP) representing the Northeast directors, and has been a member of many university committees including the Commission on Lifelong Learning.

He is a member of Alpha Zeta, the agricultural honorary fraternity, and Epsilon Sigma Phi, the national honorary extension fraternity. In 1978 he received the state distinguished service award from the Delaware Chapter of Epsilon Sigma Phi.

Looking back, Gwinn pointed with pride to the achievements of extension agents and specialists who, during his tenure as director, have assisted individuals, agribusinesses and rural communities throughout Delaware.

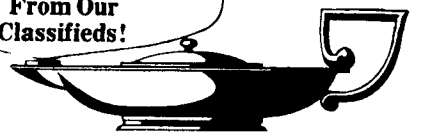
To Sam Gwinn the strength of the Cooperative Extension Service lies in its organizational setup, with the land grant college as its main knowledge base, and a staff

of dedicated, well-trained professionals to communicate this knowledge to those who need it.

"Our job is education," he said. "It's all summed up in helping people help themselves. My varied experiences in Delaware have made me appreciate more fully the real benefits of extension education as it takes place at the grassroots level. I'm totally convinced that extension's informal educational system will continue to be the most successful system in the world for providing helpful and practical information on subjects related to agriculture, 4-H youth and home economics — and encouraging people to apply it."

IT'S MAGIC
How quickly
You Get Results
From Our
Classifieds!

PHONE
717-394-3047
or 717-626-1164



WOLE • Liquid Manure Pumps
• ELECTROMIX
• Barn Cleaner Chains

WIC • Bedding Choppers
• Silage Carts
• Manure Tanks

US AGRI-SYSTEMS
800-222-2948
(301-398-2948) local

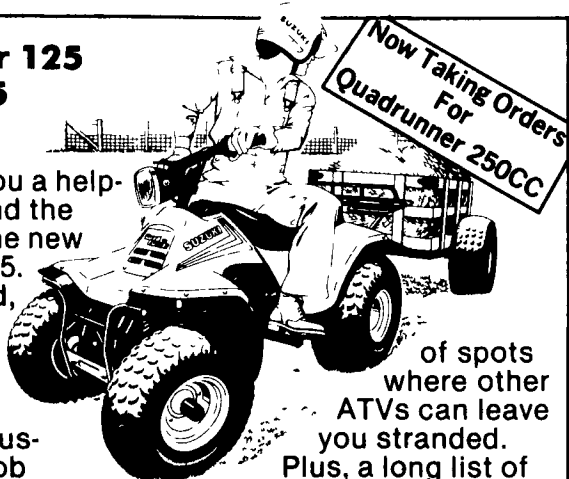
Available From
UMBERGER'S MILL
717-529-2569

Work-a-haulic.

**Quadrunner 125
and 185**

Shown with optional rear rack

Suzuki gives you a helping hand around the farm... with the new Quadrunner 125. With its rugged, four-stroke Twin Dome Combustion Chamber engine, it's got muscle to get the job done. With five forward speeds and "Power Low" gear, it pulls steep grades and hauls big loads. And our easy-to-use reverse gear gets you out



of spots where other ATVs can leave you stranded. Plus, a long list of options lets you turn this four-wheeler into a real workhorse. And best of all, when the work's all done, that's when fun really begins!



The Sensation of Suzuki.

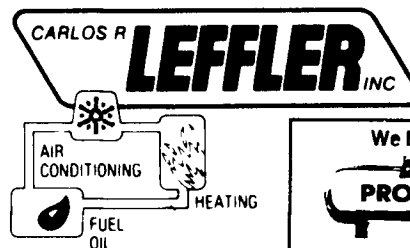
M&S ARCTIC CAT & SUZUKI

New Holland, R 1, Pa. 17557
Rt. 322, 1 1/2 Miles West of Blue Ball

GASOLINE



**LARGE QUANTITY
AND CASH
DISCOUNTS
AVAILABLE**



Richland 717-866-2105
Middletown 717-561-2772
Lebanon 717-272-2541
New Holland 717-354-4136
Reading 215-376-7364
Mt. Joy 717-653-8026
Lancaster 717-397-8244
York County 717-846-6596
Chester Co. 215-692-6919



**Trade in
your
Tiller!**



JOY! Your front-end tiller has shaken you around enough! Trade up NOW to a TROY-BILT® Tiller and receive at least \$100 for your old machine.

Visit today for a free demonstration and see how the TROY-BILT Tiller can make your gardening fun again!

— ALL MODELS IN STOCK —
Tractor-Trailer Load Just Arrived
See and compare all the Troy-Bilt® Tiller Models at:



Hollinger's
Lawn & Garden Equipment, Inc.

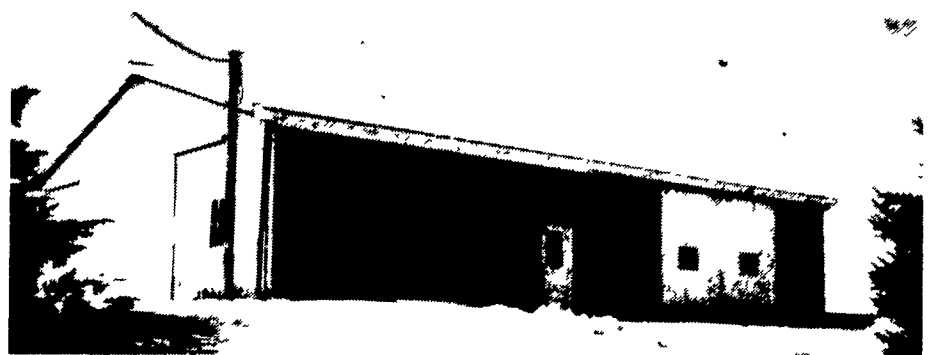
TWO CONVENIENT LOCATIONS:

1755 W. Main St.
Ephrata, PA 17522
Located on Route 322
Phone (717) 738-1131

1515 East Chocolate Ave.
Hershey, PA 17033
Phone (717) 533-4060

POLE BUILDINGS

by Stoltzfus Builders



CUSTOM BUILT AGRICULTURAL, RESIDENTIAL AND COMMERCIAL BUILDINGS FOR A VARIETY OF NEEDS:

- Painted Galvanized Roof & Siding in a wide range of sizes, designs and colors.
- Weather Resistant Pressure Treated Poles and 2x6's T&G Skirting

Call For A Free Brochure

BEN STOLTZFUS
(215) 273-3456

SAM STOLTZFUS
(215) 273-3495

Honeybrook, PA