

FARM EQUIPMENT

FARM EQUIPMENT

FARM EQUIPMENT

## Sweigard Brothers

RD #3  
Halifax, PA 17032  
717-896-3414



**FORD TRACTORS**  
New TW 20 w/cab, 4WD, air  
New 7710 w/Sycro. Trans.  
New 6600  
New 1510 w/Ag Tires  
New 1710 w/Powersteering  
New 1210 w/Frt. Whl. Dr.  
Used 140 5B 16" Auto Reset Plow. Ex. Cond.



**NEW HOLLAND**  
New TR70 Combine w/cab, air, heater, w/cat. engine and lots of extras  
New 13' flotation header and cutter bar, w/ hume reel  
New Harvesters - 707, 718, 782  
New L35 gas, L325 gas skid loaders  
New 358 Grinder Mixer  
New 367 Tank Type Manure Spreader  
Used 975 Combine w/11' head  
Used 718 Harvester w/2 heads



**NEW IDEA**  
NI 406 rake  
NI 323 one row corn pickers  
NI 3 pt. Hitch Fertz. Spreader

New Glencoe 12'9" Finishing Harrow  
Glencoe Soil Saver Stretch 7 Shank  
Glencoe Soil Saver 5 Shank  
Amco Heavy Duty 12' Disc Harrow  
Used IH 550 Harvester w/Windrow PU & 2R Corn Head

## LEBANON VALLEY IMPLEMENT CO., INC.



### NEW AND USED TRACTORS IN STOCK

- New MF 205 Compact Tractor, 20 HP, 2-wheel dr., w/3-pt. hitch
- New MF 1010 Compact Tractor, 16 HP, 2-wheel drive, w/3-pt. hitch
- New MF 1030 Compact Tractor, 26 HP, 2-wheel dr., w/3-pt. hitch
- New MF 240, 34 HP diesel, 8-spd. trans., live PTO
- New MF 270, 55 HP diesel, 8-spd. trans., live PTO, aux. hydraulics
- New MF 270, 55 HP diesel, 12-spd. MP trans., ind. PTO, dual aux. hyd.
- New MF 274, 55 HP diesel, 12-spd. trans., live PTO, dual aux. hyd., 4-wheel dr.
- New MF 670, 55 HP diesel, 4-wheel dr., cab w/air & heater, Ind. PTO, dual outlet hyd.
- New MF 298 78 HP Diesel, 12-spd. MP trans., 18.4x34 rear tires, Ind. PTO aux. hyd.
- New MF 2640, 90 HP, 4-wheel dr., cab w/air & heater, 16-spd. MP trans.
- 3525, 105 HP, 2-whl. drive, cab w/air, 16-spd. MP trans.
- Used MF 275, 67 HP, year-1980. 500 hrs., MP trans., Ind. PTO, Aux. hyd. outlets
- Used MF 30B Industrial Loader Tractor, w/34A Loader, 42 HP, w/cab

SALE PRICE - \$10,800.00

### RENTAL TRACTOR

- New MF 3545, 125 HP, w/cab & air. - Rent this tractor by the hour

Call for details

### COMBINES

- New MF 860 in stock
- New 1143, 4-row Cornheads in stock
- Used MF 410 diesel w/grainable & 4-row wide Cornhead
- Used MF 510 w/Grain head
- Used MF 750 w/Grain head
- Used 4-row Cornheads in stock

Call for details

Call for details

Call for details

Call for details

### TILLAGE EQUIPMENT

- New MF 10 and 12 ft. Disc Harrows in Stock

### HAY EQUIPMENT

- New Gehl 9-ft. & 12-ft. Mower Conditioners in stock w/delayed payment until Dec. 1, 1984
- New Gehl 4-wheel, 3-pt. Rakes in stock
- New Gehl 1460 Round Baler, open throat design, in stock, delayed payment until Dec. 1, 1984
- New MF 224 Baler in stock
- Used MF 10 Baler without thrower

\$600.00

### FORAGE EQUIPMENT

All New Gehl Forage Equipment Has Delayed Payment Until Sept. 1, 1984

- New Gehl 750, 1000 & 1200 Harvesters & Forage Wagons in stock
- New Gehl 1540 & 1580 Forage Blowers in stock
- New Gehl FB 99 Forage Blower
- Used IH 830 Harvester w/hay pick up & Narrow 2-row Cornhead
- Used EZ Forage Box 16 ft. x 6 ft. sides w/roof, 3rd beater, 10-ton gear, 11 L x 15 tires

\$2,700.00

Call for price

\$2,995.00

### SKID LOADERS

- Used Gehl 4400 gas water-cooled engine, 1976, w/bucket & fork
- Used John Deere 125 diesel water-cooled engine, 40 HP, w/bucket & fork year - 1979
- Used Hydra Mac, 40 HP, water-cooled gas engine, w/bucket & fork, recently traded

\$8,900.00

Call for price

### SKID LOADER

- Used Owatonna 310, 16 HP Kohler engine, includes bucket & fork

\$3,200.00

### GRINDER MIXERS

- New Gehl 100 & 135 hyd Mills in stock
- Used Gehl 120 w/scale & folding unloading auger

Delayed payment until Dec. 1, 1984

### MISCELLANEOUS

- New MF mounted Plows in stock
- Used MF 880 Plow, auto hyd. reset, 6-18 bottoms, has on-land hitch for dual wheel tractors
- New Glencoe Soil Saver, 7 tooth, new style long frame
- Used John Deere Flail Chopper 6-ft. cut

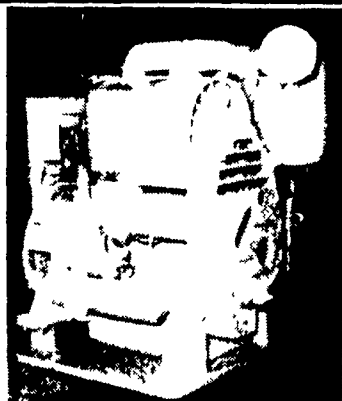
\$7,500.00

Call for price

## LEBANON VALLEY IMPLEMENT CO., INC.

700 E. Linden Street Richland, PA 17087  
717-866-7518

## REPOWER SPECIALS



**DEUTZ**  
F2L-410 Used 2-Cyl. diesel engines for sale. Running condition. Warranty limited to exchange for another like engine if not satisfied.  
14 Hp @ 1800 RPM  
20 Hp @ 2500 RPM

With: Starter, Gen, Air Cleaner, Manifolds, Flywheel, Fuel Pump, Filters, and Deep Oil Pan. Approx. New Price \$2600

(Not actual photo)

Price Each \$550

## Stauffer Diesel Inc.

New Holland, Pa. 17557 (717) 354-4181

Grimm Hay Tedders  
On Stock  
Parts Available

50" & 60" Bale Bags  
On Stock

Miller-Lake, Inc.  
R.D. #2 Box 273A  
Belleville, PA 17004  
Ph. (717) 935-2335



## Stauffer Diesel Inc.



Distributors of DEUTZ Air-Cooled Diesel Engines.  
3-500 H P Industrial, Stationary and Automotive  
• O E M - Dealer & Retail Sales  
• We have facilities for application engineering & specialty mechanical fabrication  
• Automotive engines in 108 and 170 H P sizes-EPA Approved  
• Dealer Inquiries invited



Builders of STADCO custom built diesel Gen-sets,  
2-250 kw Any configuration Fabrication of all types of power units



Dealers for LANDINI tractors  
• 42-122 PTO horsepower, 2 and 4 wheel drive  
• Fully backed by established parts organization  
• A quality tractor farmers can afford to buy  
• Landini tractors are manufactured by Massey-Ferguson S P A



Dealers for DEUTZ-FAHR farm equipment.  
• Ten tractor models, 45-145 H.P. two & four-wheel drive  
• DEUTZ is the original line of superbly engineered air-cooled diesel tractors. DEUTZ is your best bet for proven reliability and economy, ask a DEUTZ owner.  
• DEUTZ-FAHR haying tools, including the worldwide best selling hay Tedder and the model HD460 high-capacity baler which is loaded with convenient features.

Dedicated to Serving with Integrity and Comprehensive Back-up Services. Please Call Us First . . .

## Stauffer Diesel Inc.

NEW HOLLAND, PA 17557 PH: (717) 354-4181