

Livestock

Weekly Summary

Friday, May 25

Report Supplied PDA

Markets: 16.

CATTLE: 7969. Compared with 7943 head last week, and 8075 head a year ago. Compared with last week's market: Slaughter steers steady to .50 lower, spots 1.50 lower; Sl. heifers uneven; Sl. cows steady to 1.50 lower spots 2.00 lower; Sl. bullocks weak to 2.00 lower; Sl. bulls unevenly steady. Sl. steers: High Choice & Prime No. 3-4, 65.35-69.00; Choice NO. 2-4, 63.50-66.85; Good 57.50-63.50; Standard 50.50-56.50. Sl. heifers: Choice 59.00-64.00; Good 52.50-59.50; Standard 47.50-52.50. Sl. cows: Breaking Utility & Commercial 43.00-47.75; Cutter & Boning Utility 41.00-45.50; Canner & L. Cutter 35.00-41.50; Shells down to 26.00. Sl. bullocks: Choice 55.50-59.25; Good 50.00-56.50. Sl. bulls: Yield Grade No. 1, 1000-2350 lbs. 49.75-56.50; Yield Grade No. 2, 900-1500 lbs. 46.00-51.00.

FEEDER CATTLE: Steers, (few) Large Frame No. 1, 300-600 lbs. 60.00-68.00; Medium Frame No. 1, 300-600 lbs. 50.00-60.00; 600-850 lbs. 44.00-50.50. Heifers, Medium Frame No. 1, 350-600 lbs. 41.50-50.00; Medium & Large Frame No. 2, 300-700 lbs. 38.00-44.75. Bulls, Medium & Large Frame No. 1, 350-800 lbs. 45.00-60.00.

CALVES: 3946. Compared with 3660 head last week and 3678 head a year ago. Vealers Good & Choice grades steady to 5.00 lower, Standard & Good grades steady to 5.00 higher. (few) Prime 93.00-118.00; Choice 75.00-91.00; Good 60.00-78.00; (few) Standard & Good 110-130 lbs. 60.00-70.00; 90-110 lbs. 55.00-65.00; 65-90 lbs. 45.00-62.00; Utility 50-100 lbs. 40.00-55.00.

FARM CALVES: Active. Hol. Bulls 90-130 lbs. 60.00-125.00, mostly 80.00-115.00; Hol. Heifers 85-135 lbs. 60.00-85.00.

HOGS: 7397. Compared with 6900 head last week and 7411 head a year ago. Barrows and gilts steady to 1.00 lower. US No. 1-2 200-245 lbs.

48.50-51.00; No. 1-3 200-250 lbs. 47.00-48.85; No. 2-3 200-285 lbs. 45.00-47.00; No. 1-3 140-190 lbs. 42.00-47.00; Sows .50-2.00 lower. US No. 1-3 300-685 lbs. 36.00-46.00; No. 2-3 300-650 lbs. 30.00-41.00. Boars 30.00-36.00.

FEEDER PIGS: 1131. Compared with 897 head last week and 1023 a year ago. Feeder pigs 1.00-2.00 lower. US No. 1-3 20-35 lbs. 20.00-32.00 per head; No. 1-3 35-50 lbs. 30.00-45.00; No. 1-3 50-85 lbs. 42.00-51.50.

3 GRADED FEEDER PIG SALES: 2592. Compared with 2130 head last week, and 2940 head a year ago. All sales by CWT. Feeder Pigs mostly 7.00-20.00 lower. US No. 1-2 25-40 lbs. 84.00-118.00, 40-50 lbs. 70.00-104.00, 50-60 lbs. 74.00-94.00, 60-70 lbs. 75.00-92.00; US No. 2-3 30-40 lbs. 76.00-110.00.

SHEEP: 1443. Compared with 1611 head last week and 1285 head a year ago. Steady to 1.00 lower, spots 5.00 lower. High Choice & Prime 50-100 lbs. 65.00-78.50; Choice 50-100 lbs. 52.00-69.00, 20-50 lbs. 65.00-100.00; Good and Choice 25-70 lbs. 40.00-52.00. Sl. sheep: 10.00-23.00.

Valley Livestock

Valley Stockyards

Athens, Pa.

Monday, May 21

Report supplied by auction

Holstein Hfr. Calves to 89.00; Veal Calves 70.00-86.00; Vealer Bull Calves 80.00-120.00; Slaughter Calves 55.00-70.00; Grassers & Feeders 34.00-50.00; Lambs 40.00-64.00; Sheep 12.00-21.00; Hogs, 200 to 250 42.00-50.00; Sows 36.00-42.00; Boars 32.00-38.50; Pigs each 12.00-32.00; Heifers 44.00-48.25; Steers 44.00-48.00; Steers, feeder 44.00-55.00; Bulls 49.00-54.75; Cows, utility 42.00-48.00, top 50.00; Cows, fat 43.00-47.50; Cows, medium 38.00-42.00; Cows, poor or small 28.00-36.00; Cattle Market real good; Calf Market higher; Horses small to 240.00; Ponies none; Goats, each 10.00-40.00.

Poultry educator dies

COLLEGE PARK, Md. — Clyne S. Shaffner, 70, of West Laurel (Prince Georges County), a nationally known poultry educator, industry advisor and professor emeritus of avian physiology at The University of Maryland, died May 19 at his home after a long illness.

Shaffner retired from the university on Jan. 31, 1977, after 30 years of service to the Maryland poultry and turkey industry. He was poultry science department chairman at the College Park campus from 1955 through 1971.

Before and after his retirement, Shaffner had visited the United Arab Republic on five different occasions as a consultant to the Egyptian government for a poultry improvement project sponsored by the U.S. Agency for International

Development.

After this retirement, Shaffner served separate terms as secretary and treasurer of the Maryland Egg Council. He received the council's service award in 1972 and a special recognition award in 1982.

The former Maryland Turkey Producers Association bestowed on him its Tilghman trophy in 1955 for outstanding service to the state's turkey industry.

Shaffner was a fellow both of the American Association for the Advancement of Science and the Poultry Science Association, a national professional organization. He was a past president of the Poultry Science Association and a past College Park chapter president of the Society of Sigma Xi, an honorary scientific

organization for research workers.

Shaffner was one of the pioneers in the field of artificial insemination of fowl and semen preservation. He helped to develop some of the breeding techniques used with nearly all commercially produced turkeys today. His expertise was recognized in 1964 when he received a travel grant to participate in the fifth International Congress on Animal Reproduction and Artificial Insemination in Trento, Italy.

He was one of the first researchers to study the relationship between thyroid activity and reproductive ability. His continued interest in hormone studies guided many young researchers experimenting in this field. He authored or co-authored no fewer than 76 research publications.

ORDER FORM FOR MANURE STORAGE WARNING SIGN

The Pictogram shown below is being offered to you as a service of the PASC. It has been designed as a reminder and warning that the surface of open top manure storages are not safe to walk on.

Quantity	Cost Per Sign
1 100	4.50
101 500	3.00

Please send _____ signs,
at \$ _____ each. I have enclosed
my check for \$ _____

NAME _____
ADDRESS _____

MAIL CHECK TO
PENNSYLVANIA AGRICULTURAL SAFETY COUNCIL
204 AGRICULTURAL ENGINEERING BUILDING
UNIVERSITY PARK PA 16802



Precast Concrete UPRIGHT BUNKER SILO

Featuring a single component design for fast installation and completion. The sections bolt together and the use of a sealant placed in the tongue and groove creates a sealed wall surface.

The sections may be dismantled and relocated. Customers may select any length or width in 5' 2" increments.

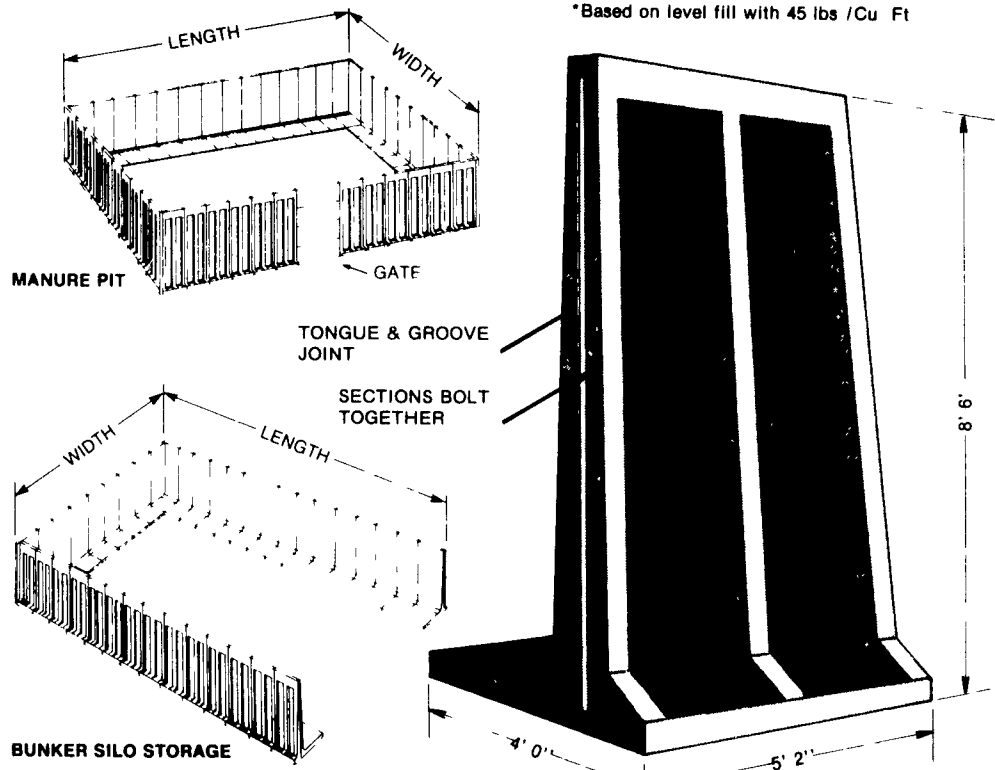
A special center wall is available to permit placing bunker silos side by side or dividing existing trench silos.

In addition to silage storage, these upright units may be used as retaining walls or manure pits.

TONNAGE TABLE FOR 8 FT SIDEWALLS*

Length	Width			
	20'	30'	40'	50'
60'	215	323	432	540
70'	251	376	504	630
80'	287	431	576	720
90'	323	485	648	808
100'	359	539	720	900
110'	395	593	792	989
120'	431	648	864	1080
130'	467	688	936	1170
140'	503	755	1008	1260
150'	539	808	1080	1350

*Based on level fill with 45 lbs / Cu Ft



★ Leasing Available! ★



Sollenberger Silos Corp.

A Nitterhouse Company

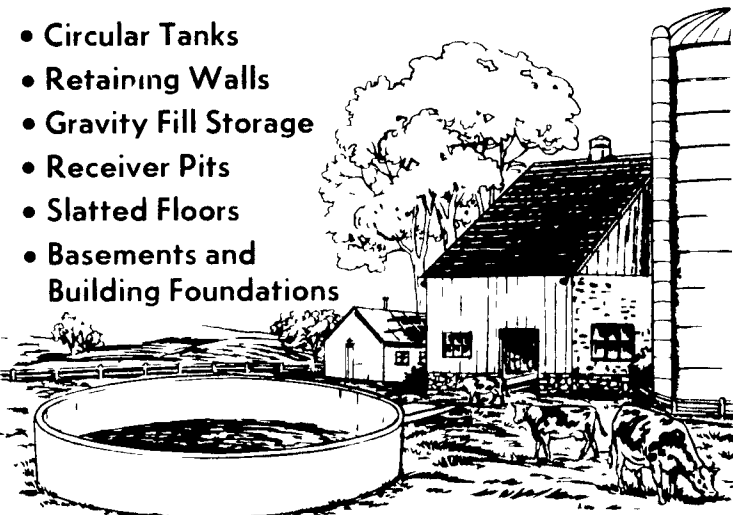
Box N Chambersburg, PA 17201

[717] 264-9588

A Producer of Quality Concrete Products Since 1923

POURED REINFORCED CONCRETE CONSTRUCTION

- Circular Tanks
- Retaining Walls
- Gravity Fill Storage
- Receiver Pits
- Slatted Floors
- Basements and Building Foundations



SIZES & LAYOUTS TO YOUR SPECIFICATIONS

We are qualified to handle any poured concrete job you may need. We use a practical aluminum forming system to create concrete structures of maximum strength and durability. For a highly satisfactory job at an affordable price, get in touch with us.

POURED FOR DURABILITY

Groffdale

POURED walls

BRICK CHURCH RD. LEOLA, PA. 17540

FOR SALES & LAYOUT CONTACT
GROFFDALE POURED WALLS (717) 656-2016
JAKE KING (717) 656-7566