

AC stresses conservation tools

MILWAUKEE, Wis. — Allis-Chalmers offers an array of implements designed to meet the needs of diverse crop and livestock enterprises.

Leading the parade of A-C implements are tillage equipment and row crop planters especially designed for the modern-day conservation farmer.

"Soil conservation is a top item on the agricultural agenda today," said Roy Uelner, president of the Allis-Chalmers Agricultural Equipment Company. "Our implement line reflects our traditional pioneering commitment to promoting conservation farming practices. "This priority makes economic sense today, too."

Planters

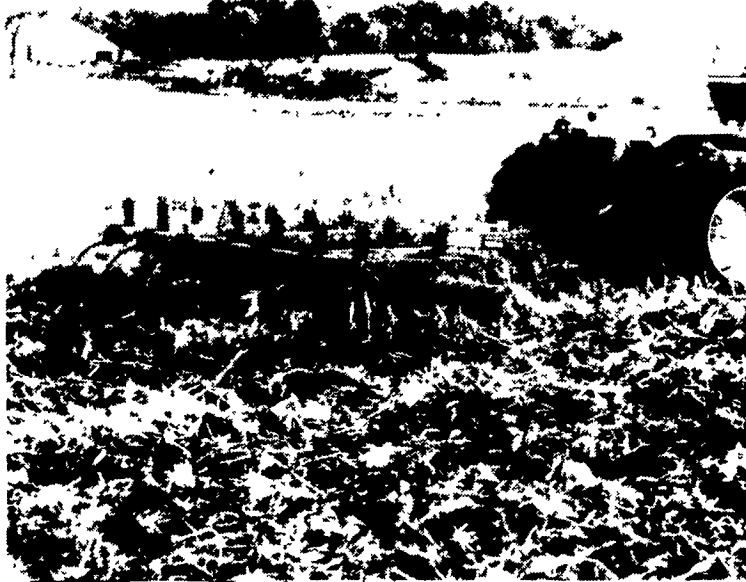
The Allis-Chalmers planter line includes air and plate units, available in 2 to 24 row capacity with 15 in. to 40 in. spacing. They are designed for accurate seed placement in low tillage, moderate tillage, double cropping and conventional type planting.

Patented No-Til coulters on conservation planters have rolled through millions of acres since their introduction in 1965. A complete line of frames and accessories adapt the planters to all field conditions.

All planters are manufactured to Allis-Chalmers design by Farmhand, Inc. in Grinnel, Iowa.

Tillage

To meet the emphasis on conservation tillage equipment, Allis-Chalmers has discontinued manufacturing moldboard plows and row crop cultivators in order



The Allis-Chalmers 1500 Min-Til conservation tool combines functions of the disk and chisel plow.

to concentrate on providing the conservation implements most popular today.

Heading the tillage equipment line is the 1500 Min-Til conservation tool which combines the function of the disk and the chisel plow.

"Straight 20-in. coulters on the Min-Til tool cut a lean, narrow path through crop residues," Fred Garton, implement marketing manager, explained. "The chisels rip the soil and incorporate up to 60 percent of residue."

Other popular tillage tools are field cultivators, chisel plows and disk harrows.

The tillage equipment is

manufactured to Allis-Chalmers specifications by Vermeer Manufacturing Company in Pella, Iowa.

Front-end Loaders

A line of front-end loaders includes models suitable for two-wheel and front-wheel-drive tractors. Attachments permit the handling of many chores with ease, including loading manure, feed, grain and machinery. Loaders are supplied to Allis-Chalmers from Lasco, Inc. of Vicksburg, Mississippi.

Manure pump introduced

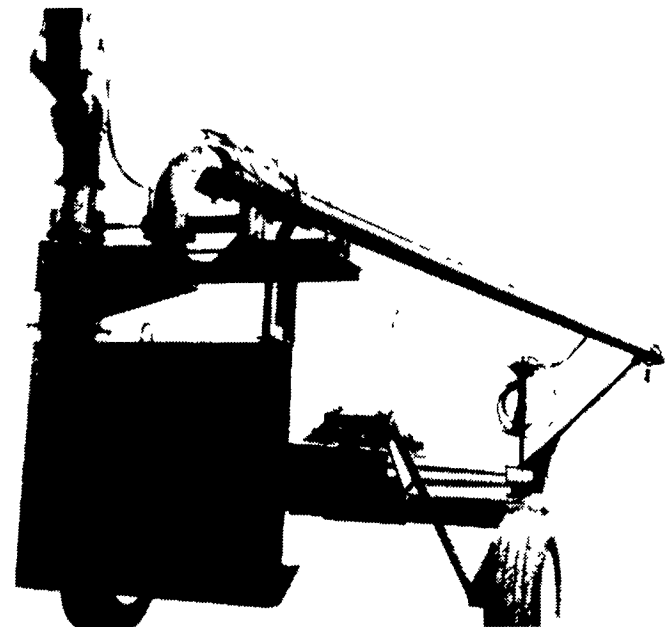
MYERSTOWN, Pa. — Hedlund/Martin expands its line of advanced manure handling systems with the introduction of a new basin agitator pump capable of mixing or loading up to 6,000 gallons a minute.

All-steel construction gives the new Model 280 pump strength to easily handle any pumping or agitation chores. A redesigned mainframe constructed of eight-inch square tubing provides a durable, rigid backbone. Tough breaker bar acts with extra-heavy impeller blades to churn clods or crusted material into a smooth, free-flowing slurry. And sturdy

transport undercarriage ensures maximum support and maneuverability.

The Model 280 figures fingertip control of completely-hydraulic functions. Agitation nozzle swivels 110° horizontally and 90° vertically. Hydraulic valve control enables operator to switch pump from filling to filling modes from the tractor.

Specially-designed shaft bearings sleeves are farmer-engineered for ease of maintenance. Designed for use on 540 RPM tractors. For more information contact Hedlund/Martin, Inc., 841 Kutztown Rd., Myerstown, PA 17067.



Completely hydraulic functions make new Model 280 pump easy to operate.

Guaranteed Replacement Value

You need to be protected against fire or other catastrophes. Your insurance should guarantee replacement value of your possessions. For a free review of your current insurance, call one of our agents today.



Old Guard

MUTUAL INSURANCE COMPANY
2929 Lititz Pike • P O Box 3010
Lancaster Pennsylvania 17604
Phone (717) 569 5361

AMOS J. BALSBAUGH, JR.
P O Box 323 Schaefferstown PA
717 949 6534

KERMIT B. BINGER
Loysville PA
717 789 3812

F. FREDERICK BREUNINGER
317 E Lincoln Hwy Coatesville PA
215 384 1980

DYMOND INSURANCE AGENCY ENGAY, INC.
2012 Lincoln Way East
Chambersburg PA
717 263 9053

Farm Drainage doesn't cost... It pays!

It pays with

- Improved Land Use and Efficiency
- Better Soil Conservation
- Deeper Root Development
- Increased Crop Yield
- Longer Growing Seasons
- Improved Plant Quality
- Better Livestock Farming



Our Machines Are Equipped With Laser Beam Control



COCALICO EQUIP. CO.
FARM DRAINAGE & EXCAVATING

RD #3, DENVER, PA 17517

PH: 215-267-3808
717-738-3794

PENNSYLVANIA CHAPTER

LICA

CONSTRUCTION

SPECIALISTS IN:

**FARM BUILDINGS - EXCAVATING
MANURE PITS - SEPTIC TANKS**



DYNAMIC MASONRY

Excavating

- DRIVEWAY STONING
- SEPTIC TANK & DRAIN FIELDS
- SNOW REMOVAL IN SEASON
- MANURE PITS
- POND WORK • FIELD WORK

- FREE ESTIMATES -

— SPECIAL FARM PRICES —

DYNAMIC MASONRY CONTRACTORS

Mike Fisher

Gordonville, PA

Larry Herr

(717) 687-6801

After 6 PM, Call (717) 687-7217

SPECIAL - SPECIAL - SPECIAL PERMA BUILDINGS

40x80
\$8945

**2 WEEKS ONLY
YOUR CHOICE**

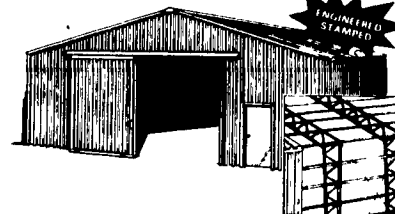
40x80
\$8945



Perma Dome

Includes:
1 - 14x20' Sliding Doors
1 - service door
10 yr. guarantee. Available engineered stamp

OR



Perma Web Straight Wall

Don't Wait - Call Today
(215) 593-2511

Perma Building Systems
Box 35, Christiana, Pa. 17509



Name _____
Address _____
City _____ State _____
Phone _____