



Livestock market and auction news

Virginia Auction Summary

May 10-16

Report supplied by VDA

Total of Va. Weekly Feeder Cattle Auction Receipts: 4,690.

TREND: Steady to \$3.00 higher.

Southwestern, Va. Auction Summary

May 10-16

STEERS: 300-500 lbs. Medium 1 65.00-74.00; Large 1 65.00-76.00; Small 1 58.00-65.00. 500-700 lbs. Medium 1 61.00-70.00; Large 1 63.00-71.00; Small 1 58.75-67.00. 700-1000 lbs. Medium 1 50.00-58.00; Small 1 52.00-54.00.

HEIFERS: 300-500 lbs. Medium 1 48.00-59.00; Large 1 48.00-57.50; Small 1 43.00-53.00. 500-700 lbs. Medium 1 45.00-55.00; Large 1 47.00-56.00; Small 1 41.00-51.00; 700-900 lbs. Medium 1 45.00-50.00; Large 1 49.00-50.50.

Northern Va. Auction Summary

May 10-16

STEERS: 300-500 lbs. Medium 1 60.00-73.00; Large 1 62.00-75.00; Small 1 55.00-65.50. 500-700 lbs. Medium 1 55.00-66.50; Large 1 55.25-67.50; Small 1 50.50-61.00. 700-1000 lbs. Medium 1 50.00-60.80; Large 1 57.00-59.25.

HEIFERS: 300-500 lbs. Medium 1 42.00-55.00; Large 1 45.00-57.00; Small 1 43.00-49.50. 500-700 lbs. Medium 1 44.00-54.00; Large 1 48.00-58.00; Small 1 40.00-49.50. 700-900 lbs. Medium 1 40.00-48.75.

Southeast Va. Auction Summary

May 10-16

STEERS: 300-500 lbs. Medium 1 67.50-68.00; Large 1 68.00. 500-700 lbs. Medium 1 56.00-65.50. 700-1000

lbs. 53.75-55.00.

HEIFERS: 300-500 lbs. Medium 1 49.00-55.00. 500-700 lbs. Medium 1 46.00-51.50; Large 1 50.00-51.00.

Shenandoah Valley Livestock

Harrisonburg, Va. Saturday, May 12

Report supplied by auction

FEEDER CATTLE: Trend-Steady. Steers: M&L-1 300-500 lbs. 62.00-69.00, 1 lot at 76.50; 500-700 lbs. 55.25-64.00; 700-1000 lbs. 55.50-57.00; Holstein 300-1000 43.00-61.00. S-1&M&L-2 300-500 lbs. 57.00-66.00; 500-700 lbs. 50.50-60.50.

FEEDER BULLS: M&L-1 300-500 lbs. 57.00-61.00; 500-700 lbs. 44.00-45.50; 700-1000 lbs. 47.50-49.00. S-1&M&L-2 300-500 lbs. 55.00-60.00; 500-700 lbs. 40.00-50.00.

HEIFERS: M&L-1 300-500 lbs. 47.00-53.00; 500-700 lbs. 46.00-53.00. S-1&M&L-2 300-500 40.00-47.00; 500-700 lbs. 40.00-46.75; 700-800 lbs. 40.00-44.00.

STOCK COWS: Beef 360.00-525.00. Baby Calves 25.00-120.00; Cows & Calves mostly 50.00-85.00.

SLAUGHTER CATTLE: Steers-Good 2-3 53.50-55.75. Heifers-Good 2-3 57.00-59.50.

SLAUGHTER COWS: Trend 1.00 higher. Utility & Commercial 2-4 37.00-46.25; Canner & Cutters 1-3 31.00-36.50.

SLAUGHTER BULLS: 1&2 47.00-52.00.

LAMBS: Trend-.50 higher. High Choice & Prime Springs 67.50; Choice 64.50; Feeder Lambs Choice 45.00; Slaughter Ewes 5.00-10.50.

HOGS: US 1-3 200-240 lbs. 47.00; Boars 28.00.

VEAL: Choice & Prime 69.00-73.00; Good 57.00-62.00.

SLAUGHTER CALVES: Good & Choice 48.00-56.75.

Four States Livestock

Hagerstown, Md.

Wednesday, May 9

Report supplied by auction

SLAUGHTER: Fed Steers- \$1.00 higher. Choice 62.00-63.50; Good 57.00-61.50; Medium 56.00 down. Heifers- Choice 60.00-61.50; Good 55.00-59.00; Medium 54.00 down. Cows- Very active, \$2.00 higher. High Yield 44.00-48.25; Average 39.00-43.00; Big Middle 36.00-38.00; Fatty herf. 36.00-39.00; Shelly 38.00 down. Fat Bulls- Steady. Good 52.00-54.75; Medium 47.00-51.00. Veal Calves- Mostly steady. Farm Bulls \$6.00 higher. Good 75.00-88.00; Medium 65.00-74.00; Farm Hfrs. 65.00-83.00; Farm Bulls 95.00-119.00; Light & Weak 46.00 down. Lambs- Very active & higher prices. Choice 64.00-69.50; Good 57.00-63.00; Medium 56.00-down. Sows- 450-600 lbs. 43.00-47.50; 300-400 lbs. 38.00-42.00.

STOCKER: Steers 300-550 lbs - Large run, \$2.00 higher. Choice 63.00-69.00; Good 56.00-62.00; Medium 50.00-55.00; Culls 49.00 down. Steers 600-850 lbs.- Choice 59.00-63.00; Good 53.00-58.00; Medium 52.00 down. Heifers-(All Weights)- Choice 50.00-55.00; Good 43.00-49.00; Medium 38.00-42.00. Bulls- Choice 58.00-62.50; Good 52.00-57.00; Medium 48.00-51.00. Springing Heifers- to 800.00. Pigs Hd.- Good run, higher prices.. 20-30 lbs. 24.00-39.00; 40-70 lbs. 40.00-55.00. Shoats by lb.- 40.00-45.00. Slaughter Hogs- \$1.00 higher. 210-230 lbs. 47.25-48.00; 240-260 lbs. 47.00-49.25; 190-205 lbs. 44.00-47.00.

Westminster Livestock Auction

Westminster, Md.

Tuesday, May 8

Report supplied by auction

BUTCHER COWS: Active bidding! \$1.00-2.00 higher! High Yield few 47.75-49.75; Standard & Utility 42.00-45.00; Cannors 39.50-42.00; Shelly 39.00 down. Slaughter Bulls- One High Yield 2040 lb. at 59.75; 1 Good 51.00; Medium 46.00-49.00; Fed Steers- Scarce! Few Choice 62.25-65.50; Good 56.00-60.00. Fed Heifers- Few Good to 58.75; Commercial 45.00-48.00.

BUTCHER HOGS: .50 higher. US #1&2 215-240 lb. 1 lot 48.00; US 1&3 200-255 lb. 46.00-47.00. Sows- Over 500 lb. to 45.50; 300-500 lb. 40.00-44.00. Boars- 300-760 lb. 34.75-35.50; 275-415 33.00-34.25.

VEAL CALVES: \$.2 higher! Choice 80.00-87.00; Good 72.00-82.00; Killers 80-100 lb. 50.00-60.00; Weak & Rough 40.00 down.

CALVES RETURNED TO FARM: \$5.00-10.00 higher! Holstein Heifers 85-110 lb. 61.00-83.00; Holstein Bulls 95-120 lb. 92.00-108.00, some 85-95 lb. 65.00-90.00; Beef Type 80-110 lb. 60.00-68.00.

SPRING LAMBS: Good demand. Choice 50-110 lb. 63.00-68.50; 120-135 lb. 59.00-61.50; Good 50-80 lb. 56.00-60.00.

STOCK CATTLE: Light run. Steers 250-500 lb. 49.00-58.00; 700-950 lb. 54.00-58.00. Heifers 300-600 lb. 42.00-51.00. Bulls 250-500 lb. 45.00-54.00.

PIGS AND SHOATS: 120 head, prices steady. By the Head 15-30 lb. 19.00-24.00; 30-60 lb. 29.00-49.00; 60-75 lb. 46.00-49.00. By the Lb. 2 lots 130-162 lb. 45.00-45.50.

Oklahoma Cattle

Wednesday, May 16

Estimated Receipts: 10,500
Same Day Last Week: 7,900
Auction sales could run 2,000 over estimate.

Feeder steers steady with Tuesday; Heifers steady to 50 cents higher. Demand moderate. Bulk supply medium frame 1 and mixed 1-2 500-850 lb. feeder steers and 400-800 lb. heifers. Large numbers offered this week. Tuesdays total auction sales 17,169 head.

FEEDER STEERS: Medium

and large frame 1 400-500 lb. 67.00-71.25; 500-600 lb. 64.00-69.25; 600-700 lb. 62.00-64.10, lot 625# thin 66.40; Lot 640# blk-white face 65.60; Lot 690# very fleshy 59.90; 700-800# 59.90-62.05; 800-900# 59.80-61.70, short-load 860# 62.75 with 1000# mates 56.75.

Medium and large frame mixed 1-2 few 375-500 lb. 60.25-65.00; 500-600 lb. 60.25-62.50, lot thin 590 lb. 66.10; 600-800 lb. 58.00-62.00 several 58.50-61.00; Lot 920 lb. 57.00.

Medium and large frame 2 430 lb. 60.00; 550-800 lb. 56.75-58.00; few holsteins 700-910# 44.25-48.05.

FEEDER HEIFERS: Medium and large frame 1 480 lb. 57.95; 500-800 lb. 55.00-57.70, few lots gaunt 630-735# 57.90-58.40; load 825 lb. 56.50.

Medium and large frame mixed 1-2 350-500 lb. 52.00-54.60; 500-725 lb. 52.00-55.50.

Medium and large frame 2 400-700 lb. 47.00-51.00.

For The Week: Feeder steers and heifers steady to 1.00 lower with steers mostly 50 cents to 1.00 off and heifers largely 50 cents off. Feeders under 500# scarce all week, trends poorly tested on these.

Slaughter cows steady to firm. Bulls 2.00 lower.

Joliet Cattle

Thursday, May 17

CATTLE: Friday through Wednesday's salable receipts 1750; 5 days last week 1139; year ago 1961. Trading moderate for the week. Slaughter steers ended the week steady to mostly 50, instances 1.00 lower compared with Wednesday of last week. Slaughter heifers ended the week 1.00 to mostly 1.50, instances 2.00 lower.

SLAUGHTER STEERS: Choice few prime 3-4 1250-1480# 66.00-67.00 Monday; Choice 2-4 1050-1350# 65.00-66.75 Monday; 65.50-67.00 Wednesday. Mixed good and choice 2-3 1000-1200# 63.50-65.00 Monday; 64.00-65.50 Wednesday. Mixed good and choice 2-3 1200-1700# holsteins 58.00-60.00.

SLAUGHTER HEIFERS: Choice 2-4 925-1100# 64.00-65.50, package 66.00 Monday; 63.00-64.75 Wednesday. Mixed good and choice 2-3 850-1050# 61.00-64.00 Monday; 60.00-63.00 Wednesday. Good 2 775-950# 55.00-60.00 Wednesday.

KING'S AUCTION, KIRKWOOD

Hay, Straw and Grain Auction Every EVERY TUESDAY

12:00

Located Rt. 472 5 miles south of Quarryville or 6 miles north of Oxford at Shaub's Auction House.

No out of state checks

ALL TRUCKERS AND FARMERS WELCOME

LOUIS LYONS & SON

Consign your cattle and hogs, feeder pigs & calves to Louis Lyons & Son. They offer choice service, excellent sorting & marketing of your livestock.

Charles Diller, Manager

Phone 394-7915

Burnell Siegrist - Buyer & Seller

Phone 626-8653

Experienced Personnel

Immediate Weighing

W.R. Sellers Hog Buying Station

Located along I-81, exit 3, PA Rt. 16 at Greencastle, PA.

Buying Hours:
Saturday 6 AM - 12 Noon
Monday 5 AM - 5 PM

Paid immediately for hogs. No commission or deductions, plus premium prices paid for extra fancy hogs.

Also buying sows and boars at competitive prices.

Office - 717-597-2315

Home - 717-597-3045

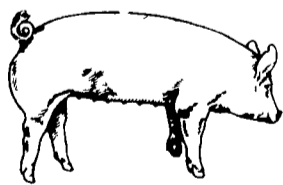
Proprietors: Paul S. Bowders
Jeff Craig

VINTAGE SALES STABLES, INC. AUCTIONS

Every Thursday at 1 P.M. HAY, STRAW & GRAIN

Sold on Commission
10 miles east of Lancaster, 8 miles west of Coatesville on Rt. 30, Paradise, PA.

L. Robert Frame, Manager
For information
717-442-4181
215-458-8518



EMERY'S BUYING STATION

NOTICE!

WE WILL BE CLOSED TUESDAY, MAY 8th DUE TO GREEN DRAGON ANNUAL HEIFER SALE

OPEN TO RECEIVE YOUR MARKET HOGS

AT THE GREEN DRAGON MARKET RD 4, EPHRATA, PA 17522 1 MILE NORTH OF EPHRATA ON NORTH STATE STREET.

HOURS: MONDAY, TUESDAY, and WEDNESDAY 6:00 A.M. to 11:30 A.M.
215-458-5677 Residence
717-733-9648 Office

YOU ARE PAID FOR YOUR HOGS IMMEDIATELY

Ken & Lois Emery, Proprietors

Seeking Profits In Commodities Trading?

- Hedging
- Speculating
- Managed Account

Call Forney Longenecker, Commodities Investment Executive, At (717) 295-8914

SHEARSON/AMERICAN EXPRESS, INC.
29 E. King St.
Lancaster, PA 17603



PIGS

STATE GRADED SALE
FRI., MAY 25
1:30 P.M.
AT WESTMINSTER LIVESTOCK AUCTION
Westminster, Md.
Ph. 301-848-9820

ATTENTION CATTLE FEEDERS

For The Graded Feeder Cattle Sale At The Lancaster Stockyards,

Thursday, May 27th

We Will Offer 100 Cross-bred Cattle Weighing 600-700 Lbs. Out of Somerset County. 150 Other Local Cattle - Angus, Hereford & Charolais Crosses.

WALTER M. DUNLAP and SONS

Lancaster Stockyards
Tel. (717) 397-5136