

Ag legislative flurry continues

BY DICK ANGLESTEIN
HARRISBURG — The State Capitol is continuing to be a busy place concerning agricultural matters.

Of primary interest to dairymen, the new Milk Security Bill, authored by Rep. Sam Morris, chairman of the House Ag and Rural Affairs Committee, unanimously passed the House on Tuesday by a vote of 195 to 0.

The bill is intended to correct some of the loopholes that bankrupted the Milk Security Fund under its present format. The new bill provides for several forms of

levies on milk handlers and essentially sets up a separate fund for each in order to better protect producers hit by defaults.

The bill is now before the Senate Ag and Rural Affairs Committee.

The Ag Development Authority Bill, which would provide for guarantees of \$10 million in loans to farmers approved in the recent bond issue, was reported out of the Ag Committee to the House Floor. Deleted from the bill was reference to denying loans to operations involved in surplus commodities. The Pa. Grange had opposed this denial because of the

constant fluid situation concerning surplus commodities and felt it would restrict the Advisory Committee too much in its deliberations of who should receive loans.

The House Ag Committee also reported out to the Floor a new bill that would require payment for poultry products within 14 days of shipment. Producers would be able to make claims on merchants' property for non-payment.

In addition to continuing deliberations on the State Budget,

the House and Senate versions of which have varying implications for agriculture, two ag committees will meet during the coming week.

The Noxious Weed Committee is scheduled to meet Tuesday morning to see if any new weeds should be added. Huntingdon County farmers are expected to request inclusion of autumn olive and a Berks group is favoring addition of bull thistle.

On Wednesday, the Senate Ag and Rural Affairs Committee will

hold public hearings on the Sunset review of both the Farm Show Commission and Pa. Milk Marketing Board.

Legislated reviews have chiefly recommended widening the membership on the Farm Show Commission to non-ag representatives and ending of the minimum retail pricing of milk in Pennsylvania.

Details on these committee meetings can be found in the Calendar on Page A10.



Workingman's Choice!



WITH SAFETY STEEL TOES!

2224

Many things together keep this shoe a top choice among working men! Slip and oil resistant chemigum cork sole and heel. Inch wide steel shank. Class 75 Safety Steel Toe and more. See for yourself!

SIZES 6-15/B-EEE
 Not all sizes in all widths

You've earned your Wings!

Red Wings

BOOKS SHOE SERVICE

107 E. STATE ST.
 QUARRYVILLE, PA 17566
 717-786-2795
 CLOSED WEDNESDAYS

HAY!

BALE BUSTERS



New! Vermeer Bale Buster. From the seat of your tractor!

- Perfect compliment to the Vermeer One Man Hay System
- Loads it, hauls it, shreds it and feeds it out in easy-to-manage windrows
- Handles bales up to 5 long, 6 in diameter up to 2,000 lbs
- Minimum tractor requirement 50 hp Cat II 3 pt hitch
- Regulates for fine or coarse feeding

Vermeer

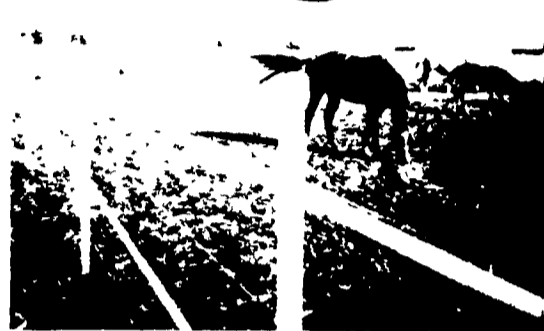
NEW YORK

Alfred Station Roy L. Doane 607/587-8876
 Schaghticoke Raymond E. Johnson 518/692-7050

PENNSYLVANIA

Fleetwood Red Wing Farms 215/944-0402
 Kittanning William E. Ramer 412/548-2317
 Peach Bottom Triple H Farms 717/548-3775
 Wyalusing William Beebe 717/746-3435

Eliminate Fencing Problems



WITH **ARC** SOLAR FENCING

NUMBER 1 CHOICE OF NEW FENCING BY AMERICAN FARM & RANCH OWNERS

"The Arc 12 Solar system allows us to safely run our stallions next to the mares eliminating time and labor on try backs"

Harold S. Warden Quality Quarter Horses, Oskaloosa, Iowa

- Eliminates fence sagging
- No staples or wire clips
- Adjustable enclosed spring assembly for each wire
- Optional site rails™
- Optional Arc 110 Volt multi wire unit
- Installed by trained dealers
- Fully guaranteed by warranty

The ARC 12 Fence is a new concept in livestock fencing. Using free energy from the sun, the solar powered solid state unit keeps a powerful 12 volt battery charged for effective shocking. Special non-conductive white plastic posts are attractive and extremely durable, capable of being bent 45° and returning to their original position. Using smooth 12 1/2 gauge high tensile wire eliminates injuries from barbed wire.

Manufactured by **SOLAR FENCING, CO.**

Box 557 - Hwy 63 South, Oskaloosa, Iowa
 Phone (515) 673-0401 (Iowa) (800) 247-8150 out of state calls

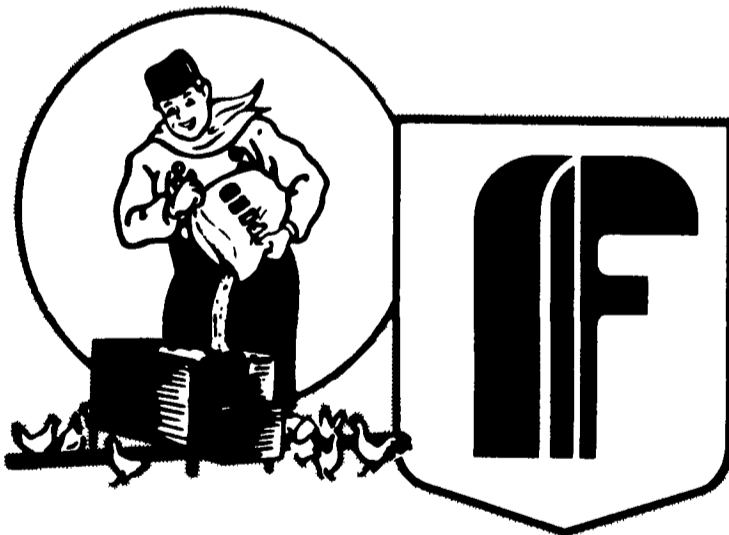
Representation in 28 States
 12 Foreign Countries

We Still Have A Few Choice Distributor And Dealerships Available

717-649-5321

KEYSTONE SOLAR FENCE CO.

R.D. 2, Box 148
 Watsontown, PA 17777



Big Dutchman® & FAVORITE®

Two companies known to the poultry farmers and farm managers as having the best equipment money can buy... have come together.

You ask, "How does this affect me, a farmer with houses of FAVORITE equipment and/or BIG DUTCHMAN equipment?" BIG DUTCHMAN and FAVORITE can answer this only by saying "Both product lines are even stronger now - much stronger. We are now one team determined to have the best automatic poultry equipment in the world. . . AN UNBEATABLE TEAM FOR THIS GREAT INDUSTRY!"

Big Dutchman / FAVORITE

Authorized Distributor



H **HERSHEY EQUIPMENT COMPANY, INC.**
 SYCAMORE IND. PARK
 255 PLANE TREE DRIVE, LANCASTER, PA 17603
 (717) 593-5807
 Route 30 West at the Centerville Exit

Designers of Quality Systems for Poultry, Swine and Grain Handling

GRASSHOPPER

The Mower That Makes Other Models Obsolete



- ELIMINATES HAND TRIMMING (Because your mower deck is out front)
- HAS ZERO TURNING RADIUS
- ALL HYDROSTATIC DRIVEN
- MOWER P.T.O. SHAFT DRIVEN

MODEL 2044 MOWER DECK 1/2 PRICE

With The Purchase Of A 12 H.P. Grasshopper For Only Offer Good On 12 H.P. Model Only

\$2995

Plus Setup & Freight

Other Models Up To 18 H.P. Including NEW DIESEL Available At Any Of The Following

DEALERS

PENNSYLVANIA

BERKS CO.
ERB & HENRY EQUIPMENT
 New Berlinville, Pa.
 Ph. (215) 367-2169

RICHARD J. MERTZ LANDSCAPING
 Kutztown, Pa.
 Ph. (215) 683-6260

BLAIR CO.
ROUB SERVICE CENTER
 Martinsburg, Pa.
 Ph. (814) 793-3711

CENTRE CO.
RISHELS SALES & SERVICE
 Spring Mills, Pa.
 Ph. (814) 422-8826
 State College, Pa.
 Ph. (814) 238-7788

CHESTER CO.
LORDS EQUIPMENT
 Elverson, Pa.
 Ph. (215) 286-9101

ROLLING HILLS EQUIPMENT
 Chester Springs, Pa.
 Ph. (215) 827-7620

STOLTZFUS FARM SERVICE
 Cochranville, Pa.
 Ph. (215) 593-2407

CUMBERLAND CO.
PETERMAN FARM EQUIPMENT
 Carlisle, Pa.
 Ph. (717) 249-5338

FRANKLIN CO.
SHANKS LAWN EQUIPMENT
 Marion, Pa.
 Ph. (717) 375-4455
 Home: (301) 790-0375

JUNIATA CO.
DICK'S DYNAMO
 Thompsettown, Pa.
 Ph. (717) 589-3896

LANCASTER CO.
R.S. HOLLINGER & SON
 Mountville, Pa.
 Ph. (717) 285-4538

LAWN CARE OF PA.
 Martindale, Pa.
 Ph. (215) 445-4541

MESSICK FARM EQUIPMENT
 Elizabethtown, Pa.
 Ph. (717) 367-1319

LEBANON CO.
HEISEY FARM EQUIPMENT
 Jonestown, Pa.
 Ph. (717) 865-4526

LEBANON VALLEY IMPLEMENT CO.
 Richland, Pa.
 Ph. (717) 866-7518

UMBERGERS OF FONTANA
 Lebanon, Pa.
 Ph. (717) 867-5161 & 867-2613

LEHIGH CO.
KERMIT KISTLER INC.
 Lynnport, Pa.
 Ph. (215) 298-2011

NORTHUMBERLAND CO.
MONTANDON EQUIPMENT CO.
 Milton, Pa.
 Ph. (717) 524-2473

SCHUYLKILL CO.
STANLEY FARM SERVICE
 Klingerstown, Pa.
 Ph. (717) 648-2088

YORK CO.
CHARLIE'S SALES & SERVICE
 Brogue, Pa.
 Ph. (717) 927-6500

STRALEY FARM SUPPLY
 Dover, Pa.
 Ph. (717) 292-2631

MARYLAND
CECIL CO.
DELMAR EQUIPMENT
 Elkton, Md.
 Ph. (301) 398-4343

FREDERICK CO.
RENTALS UNLIMITED
 Fredrick, Md.
 Ph. (301) 663-9200

RT. 77 MOWERS
 Detour, Md.
 Ph. (301) 775-7577

HARFORD CO.
HICKORY INTERNATIONAL
 Bel Air, Md.
 Ph. (301) 838-4200

KENT CO.
KINGSTOWN TRACTOR INC.
 Chestertown, Md.
 Ph. (301) 778-1640

MONTGOMERY CO.
EARL'S SMALL ENGINES
 Gaithersburg, Md.
 Ph. (301) 258-0595

DELAWARE
NEWCASTLE CO.
KEENER SENSENIG CO.
 Wilmington, De.
 Ph. (302) 655-2790

SUSSEX CO.
MISPILLION SALES & SERVICE
 Milford, De.
 Ph. (302) 422-2140

MYER'S LAWN & GARDEN
 Middletown, De
 Ph (302) 378-2845

NEW JERSEY
MONMOUTH CO.
W.H. POTTER & SON
 Middletown, N.J.
 Ph. (201) 671-0552

If There Is No Dealer In Your Area Call **LAWN CARE DISTRIBUTORS (215) 445-4542**