

## Md. research

(Continued from Page A1)

make even greater strides. Today's agreement, a supplement to the 1957 Memorandum of Understanding between USDA's Agricultural Research Service and the University's Agricultural Experiment Station, enables our two institutions to share expertise and facilities in this important area."

"I am proud of the highly effective working relationship between the Land-Grant universities and the Department of Agriculture," Secretary Block stated prior to signing the documents. "It has proven itself many times over in the search for new techniques to feed, clothe and shelter the men, women and children who inhabit this earth in rapidly increasing numbers."

Following the ceremony, Secretary Block and others in attendance were taken on a tour of the BARC facilities.

The USDA's BARC installation encompasses more than 7,000 acres and employs 400 senior scientists at its Beltsville, Maryland location, about 15 miles northeast of Washington, D.C. This research facility represents about

one-sixth of the USDA's nationwide Agricultural Research Service (ARS), according to the Center's associate director, Dr. Essex Finney.

Tour attendees were guided through the Center's orchards and conservation tillage areas, as well as a portion of the animal science facilities where several ongoing research projects were explained.

One project involves the attempt to identify the sex of sperm. According to Dr. Finney, this capability would be worth an estimated \$700 million a year to the livestock industry.

In another area of the reproduction laboratory, visitors watched on closed circuit television as researcher Robert Wall used micro-injection to introduce sperm directly into an unfertilized swine ovum. According to University scientists, such techniques improve reproductive efficiency and permit the introduction of selected characteristics from one individual into the offspring.

Other research carried on jointly by BARC and the University's Agricultural Experiment Station, involves the use of monoclonal antibodies in the diagnosis of virus



Officials look on as U.S. Secretary of Agriculture John Block (center, foreground) prepares to sign a Memorandum of Understanding providing for cooperative biotechnical research between the USDA and the University of Maryland. Flanking the Secretary are (left) Assistant Secretary of Science and Education, Orville Bentley, and Dr. John S. Toll, president of the University of Maryland.

## Ag deed seminar slated

LANCASTER — The Lancaster County Agricultural Preserve Board and the Lancaster County Bar Association are co-sponsoring a half-day seminar on agricultural land preservation deed restrictions. The seminar will be oriented to attorneys, accountants, bankers, estate planners, land appraisers and farm organization leaders.

The preservation deed restriction program options will be discussed in detail, with emphasis

on tax and estate planning implications.

The seminar is planned for Friday, June 15, from 8:30 a.m. to 1 p.m. at the Brunswick Inn, Lancaster. Luncheon is included in the \$12.50 fee. Registration is open until Wednesday, June 13. Registration forms are available from the Lancaster County Agricultural Preserve Board office, 50 North Duke Street, Lancaster, PA 17602, phone 299-8355.

## Carrot insecticide okayed

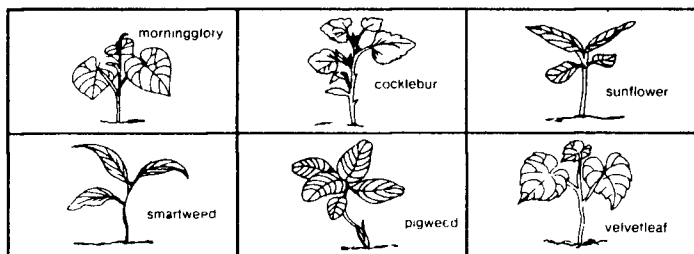
DOVER, Del. — The Environmental Protection Agency (EPA) has granted a special exemption to the Delaware Department of Agriculture allowing the use of an insecticide to control carrot weevils.

The EPA has okayed the use of

Guthion on carrots growth for processing.

Various conditions are set forth under the Section 18 exemption. Producers should contact the Delaware Department of Agriculture for detailed information.

**Pick the weeds  
in your corn you'd like to get rid of...**



**Then pick Banvel® herbicide...  
the Big Plus...to do the job.**

**Pre-emergence:** Banvel tank-mixed with Lasso® to get broadleaf weeds along with grasses ready and waiting when later weeds germinate

**Early layby** (in corn up to five inches high) use Banvel at a one pint rate. Stop weeds before they've had a chance to develop. This Banvel overlay controls cocklebur, sunflower, annual morningglory, other troublemakers

**Post-emergence** (corn up to 36 inches) Banvel herbicide controls the real problems—like smartweed, velvetleaf, bindweed, and seedling Canada thistle

Before buying a less adaptable herbicide that may be short on performance, check out the Big Plus of Banvel from Velsicol



**P. L. ROHRER & BRO., INC.**

Smoketown, PA

PH: 717-299-2571

Before using any pesticide, read the label.

types. Breakthroughs in this area have led to the rapid diagnosis of avian influenza, and may also be used as control measures for insect pests such as the gypsy moth.

The day's tour concluded at Beltsville's National Agricultural Library, where Secretary Block was introduced to the library's computerized full text data base.

Using this new system of information retrieval, farmers everywhere will have access to technical information through the

use of their own television set and telephone lines. According to library personnel, the system provides farmers with global and instant access to the thousands of publications within the data base.

During closing remarks following the tour, Secretary Block noted that the 1985 budget provides for additional funding for the areas of biotechnology and biogenetics.

"In the mid-70's we were worrying about how to feed the world," observed the Secretary,

"and during the past two years we've been trying to figure out what to do with our over-production. This is one example of how we have met our commitment to agricultural research.

"There has been a substantial percentage increase in funding for post-harvest research, as well," Secretary Block concluded. "This research will open new avenues through which agriculture may serve the people."

## Precast Concrete UPRIGHT BUNKER SILO

Featuring a single component design for fast installation and completion. The sections bolt together and the use of a sealant placed in the tongue and groove creates a sealed wall surface.

The sections may be dismantled and relocated. Customers may select any length or width in 5' 2" increments.

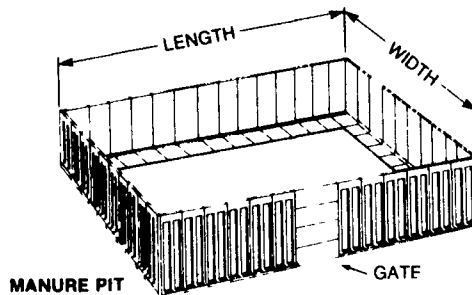
A special center wall is available to permit placing bunker silos side by side or dividing existing trench silos.

In addition to silage storage, these upright units may be used as retaining walls or manure pits.

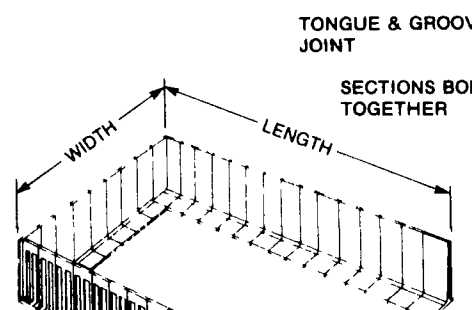
TONNAGE TABLE FOR 8 FT SIDEWALLS\*

Width \ Length	20'	30'	40'	50'
60'	215	323	432	540
70'	251	376	504	630
80'	287	431	576	720
90'	323	485	648	808
100'	359	539	720	900
110'	395	593	792	989
120'	431	648	864	1080
130'	467	688	936	1170
140'	503	755	1008	1260
150'	539	808	1080	1350

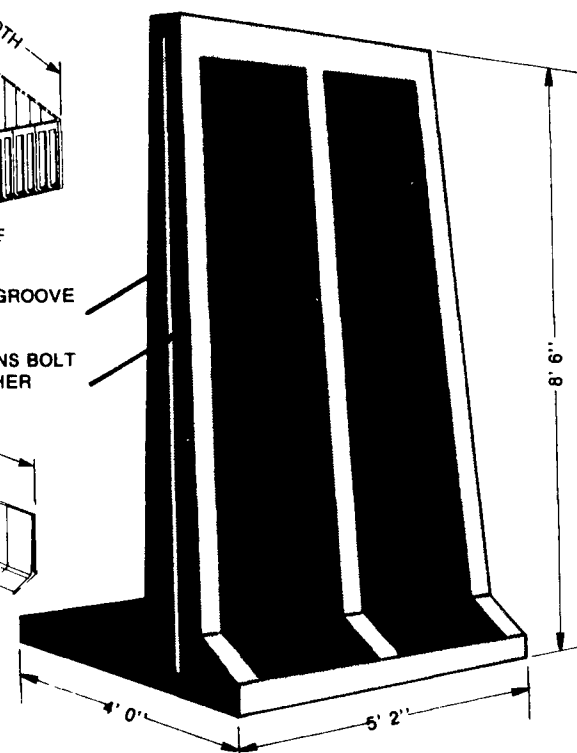
\*Based on level fill with 45 lbs /Cu Ft



MANURE PIT



BUNKER SILO STORAGE



★ Leasing Available! ★



**Sollenberger Silos Corp.**

A Nitterhouse Company  
Box N Chambersburg, PA 17201

[717] 264-9588

A Producer of Quality Concrete Products Since 1923