

Public Auction Register

Closing Date Monday 5:00 P.M.
of each week's publication

SAT MAY 19 - Public Auction for Construction Industry Council Located in Yonkers, NY. Vilsmeier Auction Co., Auctioneers.

SAT MAY 19 - 9:30 AM Public Sale of antiques, household goods, guns, coins and truck Located at 121 S 9th Street, Akron, PA. Harold and Anna Kellenberger, Owners. T Glenn and Timothy G Horst, Auctioneers.

SAT MAY 19 - 10 AM Public Auction of Personal Property & Real Estate Includes Antiques, Guns, Tractors, Car & Attachments. Located RD 4, Dover, PA at the corner of Bull Rd & Buck Rd. Oscar & Edna Bolton, Owners. Blaine N Rentzel, Auctioneer.

SAT MAY 19 - Public Auction of a Bi-Level Home and Personal Property Located at 212 New St., Terre Hill, Lancaster Co., PA. Richmond & Janice Young, Owners. LeRoy S Horst, Auctioneer.

SAT MAY 19 - 9 AM Public Auction of Real Estate, Tools, Household, Antiques, Collectables & a 1953 Packard, 2 dr., hardtop Located at Second & Wall St., Nescopeck, PA. Gene Powlis & Joyce P Shortz, Owners. Nevius Auction Service, Dan Nevius & Olen Knecht, Auctioneers.

SAT MAY 19 - 9:00 AM Public Auction for the Haiti Mission Benefit of 30 registered and grade Holsteins, quilts, pork and furniture. Located at the Belleville Livestock Mkt. Belleville, PA. Mark Glick, Auctioneer.

SAT MAY 19 - 9 AM Public Auction of Farm Machinery, 2 Tractors, Drysink Furniture Set of Chairs, Batter Type Jug, Highback Bedroom Suite & Farm Items Located approx 3 miles north of Millville PA along Rt 42 the Millville Unityville Hwy. Turn east onto Cherry Hollow Rd near the Pine Elementary School. Mrs. Mary Robbins Owner. Scott A Younk, Auctioneer.

SAT MAY 19 - 7 PM Public Auction of 125 Head of Feeder Cattle Located 7 miles south of Carlisle, PA on Rt 11 or 3 1/2 miles north off I-81 at Newville interchange on Rt 11. Then 2 miles east on Stone House Rd. Lewis R Fink, Owner. Robert C Mullendore, Auctioneer.

SAT MAY 19 - 10 AM Auction of pistols, rifles, shotguns, swords, parts, books and more To be held at the Lionville Fire Hall, Exit 23 PA Turnpike, Lionville, PA. Barry Hurchalla, Auctioneer.

SAT MAY 19 - 9 AM Public Auction of tools, truck, auto, antiques and collectibles and household furnishings Located at the corner of Main (Rt 209) and Union Streets, Tremont, Schuylkill County, PA, 4 miles north of Pine Grove, 10 miles west of Pottsville. Daniel J Nagle, Owner. George and Mike Deibert, Auctioneers.

SAT MAY 19 - 9:30 AM Public Auction of the 24th Annual Black Rock Camp Sale Sale of Handmade Quilts, Crafts, Plants & Merchandise. Located at the Guernsey Sales Pavilion, 5 miles east of Lancaster, PA, Rt 30. Black Rock Retreat, Inc., Owners.

SAT MAY 19 - 7 PM Public Auction of 125 Head of Feeder Cattle Located 7 miles south of Carlisle, PA on Rt 11 or 3 1/2 miles north off I-81 at Newville interchange on Rt 11, then 2 miles east on Stone House Rd. Lewis R Fink, Owner. Robert C Mullendore, Auctioneer.

SAT MAY 19 - 9 AM Public Auction of the An

ual Community sale for Goodville Fire Company. Selling Quilts & Real Estate. Located at the Goodville Fire Hall in the village of Goodville along Rt 23 between Blue Ball and Churchtown, East Earl Twp., Lanc Co., PA. Goodville Fire Co., Owners. Local Auctioneers.

SAT MAY 19 - 12:30 PM Public Auction of 30 Holstein Cattle Located 3 miles north of Dover, Del. Turn west on Rt 100 at Dover Plumbing Supply. Go thru 2 crossroads, 2nd

farm on right. Dale & Bertha Scotton, Owners. CT Scuse & Sons, Auctioneers.

SAT MAY 19 - 11 AM Public Auction of Farm Machinery, Tractors, Portable Scales, Chutes & Chopper Located at Clove Creek Farm on Recreation Rd approx 1 1/2 miles south of Rt 55, Poughquag, NY. Auction arrows posted from Rt 55 to farm. Clove Creek Farm, Owners. D Luther, Auctioneer.

SAT MAY 19 - 10 AM Public Auction of All Kinds of Building Material Located at Goods Auction, 111 North Maple Ave., Leola, PA. Goods Auction, Owners.

SAT MAY 19 - 10 AM Public Auction of household goods, anti

ques, violins, sterling silver flatware and misc items. Located take West Hazelton Exit off I-81, take route 93 North 1 1/2 miles, turn left at Sunoco Gas Station go 6 2 miles

then turn left to village of Rock Glen. Watch for auction arrows. Sale ordered by Elizabeth Kasper, P.A. for Ann Pronkavage Francis Schultz, Auctioneer.

PUBLIC AUCTION

VALUABLE REAL ESTATE SATURDAY, JUNE 16, 1984
1 p.m.

Located in Paradise Township Lancaster Co., PA at 23 Cherry Hill Rd., from Rt. 30 go South on Paradise Lane to C.H. Rd. Improvements consist of two and half story House aluminum siding, 4 bedrooms, kitchen, dining and living room, laundry, full bath upstairs, excellent well, 2 story barn, attached garage, nice place, in quiet community.

To see property call 717-786-4624 for appointment.

10% down final settlement 30 days or immediate possession upon settlement.

Owner
BENJ A. FISHER

Auct. Steve Petersheim
717-786-4624
Lic. No. AU-001349-L

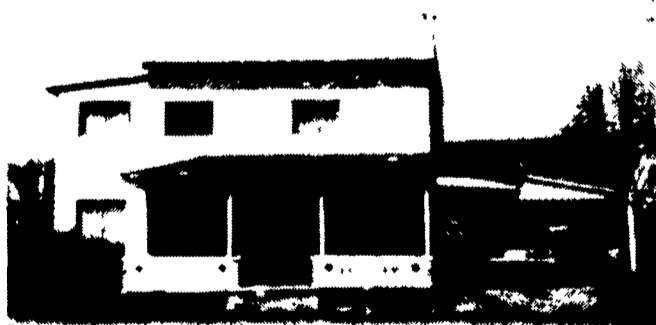
PUBLIC AUCTION

OF REAL ESTATE, TRUCKS & EQUIPMENT SATURDAY, MAY 26, 1984
at 1:00 P.M.

Located one block off Route 35 in the borough of Freeburg, Snyder County, Pa. at the corner of Front and Center Square Streets.

REAL ESTATE

Real Estate consists of a two story dwelling with 4 bedrooms and bath on second floor, along with a spacious kitchen, a 20'x21' living room, 1/2 bath, and more on first floor, situate at the corner of Front and Center Square Street in Freeburg. Dwelling has oil baseboard heat, front porch, carport, and also intercom system through home. Terms: 10% down day of Sale, balance in 30 days. For showing of Real Estate call 374-8056.



EQUIPMENT—TRUCKS—VEHICLES BOAT & TRACTORS

Industrial 3414 International Diesel Tractor with Backhoe and Loader Attachments; Cab for 3414 International Tractor; 1973 International Model 2010 10-Wheeler Dump Truck, Licensed for 58,400 lbs.; 1968 International Fleetstar Model 2000 Dump Truck; Fleetstar I.H. Hood for '73 and '74 Models (cracked); Caravelle 18 ft. Tri Hull Boat with 75 h.p. Evinrude Motor; Delray Camper for Pickup, completely furnished; Honda 350 Motorcycle; 1972 Ford LTD; 1971 Renault (as is); Case 442 Hydraulic Garden Tractor with Snow Blade; New Idea EGT Electric Lawn Mower Tractor with Mower Attached on Front (as is); 2-Wheel Garden Tractor with Attachments (needs work); and Wizard 5 h.p. Briggs and Stratton Rototiller.

TERMS: Cash or Good PA Check
All Statements made day of Auction takes precedence over all written matters.

BE PROMPT — NO SMALL ITEMS!

Owners:
MR. & MRS. RAYMOND D. KRATZER
(717) 374-8056

AUCTIONEER:
Dale L. Longacre - (717) 374-4215
#AU001899-L

PUBLIC SALE

CHARLES DOMBACHS COMPLETE DISPERSAL NEW & USED LAWN & GARDEN EQUIP. & PARTS

SATURDAY, JUNE 2, 1984
at 9:00 A.M.

Located Along Stony Battery Rd. Rt. 23. West of Lancaster at Oyster Point Turn South off Rt. 23 at the Hemphield U.M. Church. Look for signs.

LAWN BOY-SNAPPER-YARDMAN-PIONEER-HOMELITE & McCULLOUGH
NEW 1855 Snapper Tractor w/sno-Blower-Blade-Plow-Disc-Culti-Scorer-Mower: New 1655 Snapper Tractor w/Mower; New Snapper sno-Blades; 20 New Chain Saws.-Pioneer-Homelite-McCullough; 3 new Yardman snow blowers; Hyster 2000 lb. lift Tow motor; 2 Snapper sno-blowers, SnoBird sno-blower, 50 PLUS-Used mowers-Riders & push, lawn rollers, spreaders, parts, etc. Old house shutters, hanging lights, fashion link fence, doors, G.E. Dishwasher, V-Belts, LOTS OF PARTS-Lawn boy decks-wheels-frames. Dealers & parts books, Anything to help you make your lawn beautiful. Mr. Dombach is discontinuing Business due to ill health.

SALE BY CHARLES DOMBACH

Wolgemuth Auct. Service
Lic.#1036L
C.H., Bob & Dennis
Ph. 665-5664

Lunch Available

LARGE TWO DAY SALE OF FARM EQUIPMENT

at our place of business located six miles south of Chambersburg, Pa., one mile east of Marion, just east off Rte. 81 at Marion Exit No. 4 along Rte. 914 on

THURSDAY, MAY 24, 1984

FRIDAY, MAY 25, 1984

Sales at 8:30 A.M. Each Day

SELLING THURSDAY, MAY 24

Usual run of tractors inc. John Deere, International, Massey Ferguson, Fords, David Brown, Case, Oliver, A.C., M - M and others, some with loaders, Skid loaders, trucks, trailers, lawn and garden tractors, posts, gates, chain saws, tires, pipe, usual run of small items.

SELLING FRIDAY, MAY 25

Balers, Haybines, Rakes, Mowers, Harvesters, Flail Choppers, Pickers, Combines, Forage and other wagons, Elevators, Loaders, Sprayers, Grinder-Mixers, Spreaders, Planters, Drills, Plows, Chisel Plows, Disk harrows, New and used Rotary Mowers, Blades, Post Diggers, usual run of equipt., bal of small items.

FARMERS & DEALERS - Bring in your equipt. for this sale. No junk or junk tires, please; No equipt. with liens accepted unless we are notified in advance. Please secure all P.T.O. securely to equipt. No equipt. removed until settled for.

Next sale June 28-29.
Open daily 8 A.M. till 5 P.M., Sat. till 3 P.M. Closed Sundays.

Terms: Cash or Good Check - Breakfast and Lunch at Sale

RALPH W. HORST, Manager

Licence No. AU-000437L
Marion, Pa. 17235 Phone: 717-375-2824
Auctioneers
Rentzel, Wolgemuth, Upperman, Bohrer, Speicher, Harry, Gossert

COMPLETE DISPERSAL

FRIDAY, MAY 25
10:30 A.M.

2 miles from New Albany, PA on Dempsey Hill Road, 13 miles from Wyalusing, 16 miles from Dushore Bradford County, yellow arrows.

72 High Grade Holsteins - Year Around Dairy

42 mature cows, many just fresh, many more to freshen May and June, many more to freshen Sept. and on thru fall. 10 heifers bred for Sept. and October, 4 big open heifers and 14 started heifers. Exclusively M.E.B.A. breeding. Pregnancy examined and 30 day Interstate charts. Presently sending about 1 ton daily.

MACHINERY

Ford 4600 Diesel wide front, manual shift, dual power, weights, 1800 hours; IH 544 gas, wide front, new rubber, 3 pt., PS; Farmall 400 tractor, gas, TA, very good rubber; Super M wide front, just overhauled with power pack, 12 volt; Loader for Farmall 400; Farmall F12 tractor, original; IH 540 plow, 4 bottom; IH 16 disk harrow; JD 16' transport; 18" disk King chisel plow; Case pasture disk; AC 6 row no-till planter with 200 gallon fert. tank; Ontario 17 hoe drill on rubber cultipacker; Wilmar lime spreader with SS apron and air lane tires; EZ flow lime sower; Hardy spreader on wheels for white wash or orchard; 150 gallon poly liquid fert tanks; Walsh 200 gallon crop sprayer; 36' bale elevator; JD 60' mow conveyor, 1hp; NH 489 haybine, like new; NH 311 Baler with thrower, 1 year old has baled 4294 bales; NH 770 chopper with 2 row narrow head, wide pick up head and snapper 1 row head and knife sharpener; NH 56 rake; Kuhn tedder, 1 year old; Gehl Hi-Throw blower; (2) Fox forage boxes and wagons; IH 105 forage box and wagon; Gehl forage box and wagon; (3) of these have flotation tires; 3 bale boxes and wagons; Win-power generator and trailer; AC 60 PTO combine with Badger stock trailer; LPTO Unit for 400 or 460 Farmall tractor also 1000 RPM shaft; Farmall 400 Chassis with wheels, tires and housings; 1968 Ford 350 1 ton dump box, duals, 360 V8 and 31,000 miles.

MILKING EQUIPMENT

Universal 1 1/4" SS pipeline about 250' pipe; Universal 27CFM vacuum pump unit and units to be sold complete; John Wood and Haverly 300 gallon tanks.

PRODUCE

About 25' corn silage in 18x50 silo; also 14x30 silo of corn silage.

LIQUID MANURE EQUIPMENT

Better Bilt 1500 gallon convertible liquid manure spreader on tanden axles and flotation tires; Better Bilt liquid manure chopper pump, PTO and 3 pt.; Acorn 10hp 12"x24" manure ram; Cornell 230' barn cleaner (2 years old); Old Cornell 230' chain; Standard drive head.

MISCELLANEOUS

Diesel fuel tank; 2 vent fans; 36"x48" Agway gestation table; Na-Churs 650 gallon 10-10-10 liquid fertilizer.

****Mr. Spencers poor health and doctors advice the only reason for this sale****

Terms: Cash or Approved Check

Owner,
GUY SPENCER

Jim Adriance-Auctioneer
Montrose, PA
717-278-1574
AU-000004L