

## Sale Reports

A Public Auction of farm machinery was held May 10 for the Donald L. Harkins estate at 3639 Grier Nursery Rd., between Jarrettsville, Md. and Delta, Pa.

Some prices were: A.C. 170 D tractor \$4900, N.H. 273 hayliner baler \$2800, J.D. disc \$950, 2 hay wagons \$375 each,

post hole digger \$300, N.H. 513 spreader \$700, and J.D. model 640 hay rake \$700.

John H. O'Neill, K.C. Travers & Aimee C. O'Neill conducted the sale.

XXX

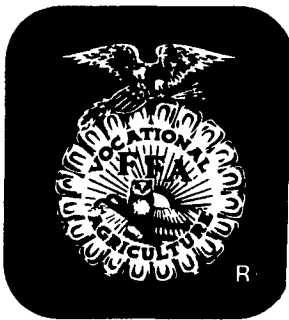
A Complete Dispersal of Holstein cattle and farm machinery was held May 12 by Lewilyn

and Betty Seamans, 6 miles from New Milford, Susquehanna Co., Pa.

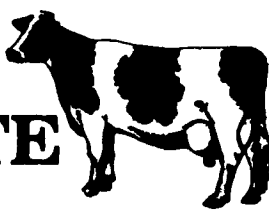
The top Holstein cow sold for \$860 and the average of the 32 mature cows was \$600. Heifers ranged in price from \$300 to \$610.

Other prices were: David Bradley 1200 tractor \$4100, Ford Major D tractor \$2700, Farmall M tractor \$1400, Bale King wagon \$1100, M.F. #12 baler \$700, N.I. spreader \$750, Papec wagon \$975, 16'

Badger silo unloader \$500, N.H. #56 rake \$600.



## MERRI-BUCK COMPLETE HOLSTEIN DISPERSAL



Located just off Rt. 44 on Glaze Rd. 3 miles from Turbotsville, 2 miles from McEwensville, 18 miles from Dansville, 20 miles south of Williamsport. Only 3 miles off newly marked I-80. Watch for auction arrows.

**THURSDAY, JUNE 7, 1984**

11:00 A.M.

**120—REG. HOLSTEINS—120**

72 milking females, 25 bred heifers, 40 yearlings & calves. Over 60 head due July to Dec. Herd is certified & accredited, interstate tested, preg. ex., charts day of sale.

DHIA Ave. 17,061m. 3.6 620F.

Feb. '83 BAA 103.0 (will be rescored before sale!)

### SIRES REPRESENTED:

Elevation-7; Elvate-7; Chairman-7; Cavalier-5; Marvex-4; Columbus-3; Lucky-Royal-3; Sexation-3; Jemini-6; Advantage-4; Shining Star (Valiant son)-10; Starlite-2; Jet Stream-2; Milu-2; Pete-2; Tradition-2; Glendell-2; Dynamo-2; G.V. Star-2; Creek-2; Bootmaker, Jerry and others.

### SERVICE SIRES:

Columbus-12; Mars Tony-10; Marc-9; Partner-5; Bova-7; Bell-6; Chairman-5; Partner-5; Cavalier-4; Joe-2; Valiant-2; Tradition, and others.

### SOME FEATURES SELLING:

#### A High-Indexing Glendell!

Scored VG-87 with index of 760m. 40F. .07 +117\$ Due in Aug. to Mars Tony, she made 4-0 333d. 24,638m. 4.0 987F. & proj. at 6-0 for 25,063m. & 930F. Dam is by Elevation with 4 rec. over 20,700m. & 815F. up to 22,600m. 4.0 906F. Lft. of 121,660m. & 4,896F. Grdam has 679F. 4.1%.

#### A Beautiful Pete!

Scored VG-87-2y-(Ex mam) with 14,500m. & 500F. at 2 yrs. Proj. at 3-3 for close to 16,000m. and bred to Milkmaster Dam by Black Bart has 17,750m. 3.5 630F. and 617F. 4.2%. Grdam is VG-89 Elevation with 24,940m. & 863F. and over 100,000m.

#### A Lovely Cavalier

Scored VG-86 selling fresh in Jan. milking 108 with 3-2 343d. 22,921m. 3.8 866F. Sells with her great framed dam by Double Triune (VG-85) with 19,339m. 4.1 787F. and Lft. to date over 120,000m. & 4,800F. due in Sept. to Cavalier again! Sells with Sept. mat sisters by Tradition and Elvate.

#### A Sweek Lucky-Royal

Sells bred to Mars Tony with 1-11 335d. 16,760m. 3.5 590F. and proj. at 3-0 for 20,611m. & 684F. Sells with Oct. 82 Tradition and a Chairman dau. Dam was GP-83 Chief with 20,030m. 3.5 696F. Grdam GP-80 Elevation with 20,050m. 4.0 811F. 3rd dam an Ex Marquis.

A GP-81 Glendell due Aug. to Marc making 670F at 3-4 Dam is VG Elevation with 16,530m. 4.7 779F. and 786F. 4.3%. Grdam has 18,400m. 4.3 783F. Sells with Dynamo dau.

#### One of 3 Elevation full sisters!

VG-85 with 3-4 356d. 20,622m. 4.4 902F. and proj. at 5-9 for 20,303m. & 855F. Sells with a Jemini dau. bred to Bell. Grdam is GP-82 and 4 times over 17,280m. VG-87 sister sells with 23,761m. & 768F. at 4-3 and due in April to Chairman. Her Apr. Chairman sells. GP-84 sister sells twice over 19,000m. & 600F. Her real good moneymaker dau (GP-82-2y) sells with 2-0 364d. 21,014m. & 714F. and due in Sept. to Marc. Proj. close to 22,000m.

—A nice, upstanding Jemini selling fresh in April made 1-11 363d. 17,305m. 3.8 656F. Dam selling is VG Lift-off due in July to Columbus Over 100,000m. & 4,000F. to date. she has records to 22,163m 3.7 826F. Grdam VG-87 Ormsby Senator with lft. of 156,250m. & 5,832F. 3rd dam VG with 100,540m & 3,406F.

—A real good Bootmaker with 2-0 305d. 12,537m. 4.0 506F. Sells fresh in Feb. VG Elevation dam sells with 25,883m. 4.1 1065F. and fresh in Mar. Grdam Ivanhoe Star with 578F. 4.0% 3rd dam GP with 20,100m. 4.0 814F.

—A nice Lucky-Royal due Sept. to Marc. Proj. at 2-11 for 16,350m. & 520F. Dam selling is VG Elevation proj. for 22,166m. & 750F. and bred to Chairman. Dam's VG-86 Elevation full sister also sells bred to partner with 3-0 305d. 24,699m. 3.7 916F. Her dau by Golden Nugget sells proj. at 2-11 for 20,071m. & 739F! Grdam is GP Black Bart with 19,270m. & 646F.

—A GP-82 Jerry bred to Mars Tony with 20,537m & 719F. and proj. at 4-5 for 23,902m. & 763F. GP-81 dam sells bred to Joe with 17,840m. 3.8 679F. GP-82 grdam had 20,640m. 3.7 758F. A GP-84 mat sister by G.V. Star sells proj. for 18,629m. & 605F. at 3-6 with Chairman calf.

—A Mar 82 Valiant due in May to Columbus. Dam GP-80-2y by Jerry with 2-0 14,600m. 3.8 552F. Grdam GP-81 Elevation with 18,180m. 4.7 858F. 3rd dam VG-88 with 646F. 4.2%.

—A VG-88 Elevation grdam. due Nov. to Bova and proj. for 23,284m. & 896F. 3 other rec. over 18,400m. & 700F. Sells with 2 Sept. Elvate dau. and an Oct. Mark A.

—A VG-87 Fury Ivan bred to Tony that never has made under 20,300m. or 800F. Proj. for 23,459m. & 846F. at 5-11. Sells with milking Sexation proj. for 15,355m. & 513F. at 1-10.

—A Starlite with +250m. +26F. index due in June to Glenview Joe. Has 3-4 19,182m. 3.9 748F. and finishing over 20,000m. & 750F. Dam is 20,000m. Elevation. Grdam is 21,000m. Double Triune. Sells with 2 dau.

Many other top young animals with good production and depth of pedigrees. A real outstanding herd of cattle.

**TERMS—Cash or Good Check.**

**Sale Under Cover**

**Lunch Available**

**Owner:**

**PARK L. & MARY ANN BUCKWALTER, JR.**

Watsonstown, Pa. Phone 717-649-5752

**Sales Mgrs., WOODS AUCTION SERVICE**

**Gordon & Ron Wood**

**RD 2, Mansfield, Pa. Phone 717-549-4901**

## LARGE FARM MACHINERY AUCTION

**NO BID-IN...NO RESERVE NOT GOING OUT OF BUSINESS**

**SATURDAY, MAY 26, 1984 9:00 AM**

We will be selling tractors and equipment at ABSOLUTE AUCTION at Charles McCarthy's machinery yard, along Route 6 in Meshoppen, PA. Small items at 9:00 AM sharp. Large equipment at 10:00 AM., back to small equipment by late afternoon. Big tractors and large equipment sold early in the day for the convenience of those with long distances to travel.

**DIRECTIONS:** We are located 1 mile East of Meshoppen (Wyoming County - Northeast PA), just off Route 6. Watch for Sale signs.

### TRACTORS

**JOHN DEERE:** 4430 4WD, cab & quad, range; 4020; 3020 D; 1010; 720 G wfe; 720 D; 620 G wfe; 60; A.

**INTERNATIONAL:** 686 D wfe, dual remotes, 3 pt.; 1066; 856 wfe; 706 G; 560 G; 450; 350 Utility; 300; Super C; Several H's & M's.

**CASE:** 1690 4WD, 1150 hr.; 830 wfe; 430 G Late Model, p/st, 3pt.

**FORD:** 5000 D w/ldr., 2500 hr.; 3000 G; 800; Jubilee; Several 8N's; Ferguson Diesel 3 pt.; 601 w/snow plow.

**MASSEY FERGUSON:** 165 D; 65 (2); 35 G; M.H. Pony w/blade.

**ALLIS CHALMERS:** 175 D 1250 hr.; D-15 wfe, 3 pt.; 1-600 (D-15 Size) w/Ind. Ldr., 3 pt.; D-17.

**DAVID BROWN:** 1200 D.

**OLIVER:** 550.

### LOADERS

Large Case Loader fits IH, JD & Case; Kelly front loader; International Skid Steer Loader; Heavy duty dozer blade - tractor mounted - Walden; several misc. loaders.

### TILLAGE

**PLOWS:** JD 3 pt., 3 btm Hyd. reset; JD 5 btm. Hyd. reset; JD 4 btm. semi-mt. Hyd. reset; JD 3 pt., 4 btm trip plows; IH 3 pt., 3 btm Auto reset; Several other good 1-2-3-4-5 btm. semi-mt., mtd., or trailer plows; Mtd. plows for Super C; JD trailer sub-soiler; AC sub-soiler; Cable Plow (could be sub-soiler).

**DISCS:** AC 12' Transport Disc; JD 10' & 8' Transport Discs; IH 12' & 8' Transport Discs; White #281 Plowing disc; Sunflower 18' HD fold-up disc.

**PLANTERS:** Cole 2R, 3 pt. planter; IH 2R, 3 pt. planters (2); IH 4R planters (2) one w/Gandy boxes; Ford #309 2R, 3 pt. planter; JD 2R 3 pt. planter.

**MISC.:** IH 5R, 3 pt. Cultivator; 10' Transport Cultipacker Harrow; Various width Drag Harrows; Brillion Seeder; Trailer type seeder.

### HAY EQUIPMENT

**MOWER CONDITIONERS:** NH 479; NH 469; NH 489 (Excellent); NH 7'; IH 990 (2) 9' & 7'; MF 9'; Ford 9'; NI 270 Cuditioner.

**MOWERS:** JD 3pt. 7' mower; Ford 3 pt. 7' mowers & others; Brady 16' flail mower; Long flail mower; JD side-mount mower.

**BALERS:** NH 273 Balers w/kickers (2); MF 124 Baler w/kicker; JD 14T; JD 224T w/#30 Ejector (nice); IH 37 w/kicker.

**MISC.:** 2 new 18x8 Steel Bale Racks; 2 new 18x8 Wood Bale Racks; New 21' Bale King Wagon Rack; NH 256 Rakes (2) one w/front wheel; Bale Buncher; Several Skeleton & Mow Elevators; Fahr Centipede Tedder; 2 Grimm tedders; MC Rotary Scythe; several crimpers; Used 18' Bale King Wagon.

### FORAGE EQUIPMENT

**CHOPPERS:** NH 770 2R narrow; NH Super 717 2R & P/U; 2-NH 880 2R; NH 718 P/U (Near New); NH 36 Flail Chopper; IH 720 2R IH Corn Picker; Gehl 2R Snapper Head; Fox 900 P/U; Fox FH 1R; Fox Custom 90 2R; MF 290 2R & P/U; Hesston 7020 1R & P/U; JD 35 2R & P/U; Mengele HD MB 74 3 pt. 1R.

**MISC. HEADS:** Several NH 1R Corn Heads; Direct Cut Head for NH 717; 2R Corn Head for NH 880; Other JD & Fox Heads.

**BOXES:** Dion 3 beater w/roof; Dion 3 beater on 20" tires; New Lamco Box on 8T running gear; Lamco R.J. on Knowles 8T gear; Gehl 920 Box on 8T gear; Gehl 940; Papec L.H. Boxes; Cobey R.H. Box; 2-Kasten Wagons.

**BLOWERS:** 2-Gehl F.B. 88 blowers; NH Super 23; Hustler blower; Kools blower; NI & AC blowers; Case 100; Owatonna blower; Late model Fox (like new).

### SPREADERS

NI 621 Tandem; NI 502; NI 711 (Real Nice), NI Ground Drive 75 bu.; NI Ground Drive 95 bu.; NI 516; JD 40; JD 760 Barrel IH 555; IH 130 Ground Drive; Hawk Bilt (parts)

### COMBINES

AC K w/cab & 4R & Grain Heads; AC Pull type PTO; IH 80 Pull type PTO; NH 35 Pull type PTO.

### MISC.

Spin Spreader; Post Hole Diggers; Several 5' & 6' Rotary Mowers (3 pt. & trailer type); Several Boom Sprayers w/plastic tanks; Lime sowers; 3-Farm Alternators (15-16-20K); New Metal Pipe Gates; Rock Picker; PTO Dump Cart; Several 6' & 7' Snow blades; Tire Chains; New 14" & 15" wheels; Milk Cans; Bedding Chopper; 16.9x30 Duals.

### TRUCKS

1976 Chev. C-50 w/16' diamond plate bed & racks; 1951 Int. Pick-up w/wooden box; 1977 Ford Courier Pick-up; 1962 Ford 1 Ton (Parts); Morrisville Contractor Body for 1 Ton Truck (Nice).

### ANTIQUES

1954 Chev. Car; 1948 Int. KB7 Fire Truck (6500 mi.); Int. Bulldozer; 1929 Ford 2T Truck; B.F. Avery Model A Tractor; Steel Wheel McCormick Deering Tractor; Horse Drawn Sleigh; Fordson Tractor.

**AUCTIONEER'S NOTE:** This is only a partial listing. Many more items are to be hauled home by sale day. This list is subject to change due to daily business. We will try to have all listed equipment here by sale day. Plan to attend early and spend all day with us for this absolute sale.

**TERMS:** CASH OR GOOD CHECK. Items over \$1000.00, 25% down sale day only, balance in 10 days with approval before sale time. Items to be paid for in full before removal.

Owner and Auctioneer are not responsible for any accidents.

Trucking available.

**OWNER:**

**CHARLES MCCARTHY**

P.O. Box 248

Meshoppen, PA 18630

(717) 833-5214

**Auctioneer & Sale Manager:**

**Bill Mead**

**RD #1 Montrose, PA**

**AU-2072-L**

**(717) 278-2901 (717) 278-9702**

**LUNCH**