

**TRUCKS & TRAILERS**

Gooseneck 24x8, top condition, low mileage. 609-921-1777 or 921-1743.

For Sale - 1970 Ford gas 10 wheeler dump w/aluminum body. 717-532-9271 or 717-532-6257

**TRUCKS & TRAILERS**

1977 GMC 30 series stake dump, 350 4 spd., PS, PB, 28,600 original miles!!! Good rubber. 717-692-2086.

1977 Chevy cab & chassis, 30 series, 350 4 spd., PS, PB, good rubber, new paint 717-692-2086

**TRUCKS & TRAILERS**

**NEED CASH?** We buy unwanted trucks and parts, scrap aluminum of any kind. Wrecked dumps, vans, flats, tank trailers, etc. Call 215-944-9871 (evenings).

For Sale - 2 1976 45' Budd dry freight vans. Fixed tandem 11x24.5 Budd wheels, \$4250 each. Call 215-948-7900. Ask for Dave Skipper or Rhonda Bertolet.

'77 Chevy 4 WD, 3/4 ton pickup, fifth wheel hitch and heavy duty bumper hitch, 350 engine w/4 barrel, 350 automatic, Hagolen head lights, new paint, no rust, good radial tires. 717-442-8564.

For Sale - 1972 International tandem fuel truck, 4,000 gallon divided tank, double pumps and meters, 671 Detroit diesel, excellent condition, \$15,000. Call 814-674-8756.

1976 Chevy, C-65, 26,000 GVW, New 427 cu. in. engine, PTO, 5 sp.-2 sp., 6 good 10:00-20 Radials, 189" wb., 124" CA. New clutch, brake lining, wh. bearings, & king pins. Columbia Co. 717-799-5213.

For Sale - Truck tires, four 10:00x20 on rims, 90% rubber, bias, rib tread - Seiberlings - Also car trailer, single axle with ramps. Lebanon Co. Phone 717-273-6018 after 5 PM.

'70 International 33,000 GVW, 18' aluminum dump bed with double action tailgate, 2 speed rear, T-36 transmission, 392 engine. Just majored and inspected. 717-786-1882.

Small office trailer suitable for an office trailer or tool trailer. Gas heat, 8x8, 717-397-1186 or 717-872-4762.

Trailer 40 ft. with 4 ft. sides, tarp, good condition, \$3,500. Ford 1964 Tractor, 477, 5+2, \$1,500. 609-451-6057.

**REAL ESTATE**

Bedford County, Friends Cove area, 50 cow dairy farm, 240 acres Murrill & Hagerstown soil, 96 tillable will divide. For Details call 814-847-2833.

For Sale - 3 bedroom brick ranch style home. Kitchen, living room, large family room, 2 car garage on 23 acres. Partially wooded with small barn, 12 miles North of Lewistown. 717-543-5446.

New York-Finger Lakes area - Geneva - 430 acres and 600 acres, 2 crop farms, good soils, available to parcel out. Relatively stone free with very gradual slopes. Some with houses and barns. Contact Willard Pengelly, Managing Broker, Harris Wilcox Inc., Broker. 716-494-1880.

New York - Syracuse area, dairy farm, 160 free stalls, 1000 gal. bulk tank, 340 acres, 217 tillable, top alfalfa farm, Palmyra, Phelps dominate soils with high PH. More land to rent. Large colonial residence, side road near town. Excellent setting. Price \$360,000. Contact Willard Pengelly, Managing Broker, Harris Wilcox Inc., Broker. 716-494-1880.

**USA Buildings** - agricultural-commercial, full factory warranty, all steel-clear span, smallest building 30x40x10, largest 70x135x16. 30, 40, 50, 60 ft. widths in various lengths. Call 24 hours, 1-800-521-0334 Extension 540. Must sell cheap immediately. F.O.B. Will deliver to building site.

For Sale - 100 acre Farm, Juniata County, 65 A clear, two streams, frame house, large shed in Amish/Mennonite area. 717-589-3724 after 3

Lock, stock, and barrel farm with at least 150 acres, preferable registered herd and full line of equipment. Must have good house. No down payment, guaranteed payout in 36 months. Call 914-677-8220.

For Sale - 170 acre farm in present operation. Jefferson Co., NY. 50 acres tillable, land to rent, 40 tie stalls, silo, heifer barn, new milkhouse, woodland and pasture, excellent spring, 2 story house, \$65,000 or good offer. 1-315-628-5722.

**84 ACRE HOG FARM FOR SALE.** MONTOUR CO. Bank and pole barns for gestation & fattening; cleaners. Farrowing bldg, feeders; heaters. can fatten 1100 hogs. PRICE REDUCED TO \$210,000. 3 bedrm. house. Negotiable: grain bin & dryer, farm machinery. 350x40 Favorite cage layer house (30,000 birds). Century 21 Sprecher Agency, Milton. 717-742-8748. Kate Wieand.

**TRUCKS & TRAILERS**

1975 International truck L30, new leader spreader body, good condition. 215-794-7259.

**REAL ESTATE**

For Rent - to Christian family, 3 bedroom upstairs apartment in farm house, quiet location. Myerstown Area. 717-933-5831.

**DREAMS DO COME TRUE!!** Perry County 172 Acre Farm w/pasture, woodland and fishing stream along the border. Comfortable stone home with oil hot water heat. 3 bedrooms, 2 baths and family room... Owner will assist with financing. \$245,000. Century 21 Walak Assoc. 763-7991, 238-6872 or 774-7374.

Wanted - 35 plus acres in Northern Berks County for small farm. Not to be developed. Will pay approx. \$1,000 per acre. Call evenings. 215-926-2118.

Hog producing farm, 162 acres, farrowing quarter, full barn, gestating sheds, other buildings. Call Coldwell Banker, Ralph Feldman Realtor, Chambersburg, PA. 717-263-9271 Harvey M. Bowers, Associate. Home phone 717-352-8265.

Farm Wanted - Central or Southeastern Penna. Poultry, minimum of 60 acres. Owner financing. Qualified buyer. All details in first letter to: Farm, Box 365, RD 2, Mohnton, PA. 19540.

For Sale - 300 cow dairy operation with 300 acres of good limestone ground. All the conveniences and many extras, including long term owner financing and low interest. 304-263-9801.

**WANTED TO LEASE** - Possibly buy in future. Milking facilities, house and pasture; plan to purchase feed. Lancaster Farming, Box 366, K-15, Lititz, PA. 17543.

Centre County - 2 bedroom, partly restored older log home with clap board siding. Small village in Brush Valley. New septic and wiring. Full acre with fruit trees and berries. 814-349-5925

For Rent - House and dairy barn. 40 plus milkers. R. Lott, 3496, Rt. 414, Seneca Falls, NY 13148.

Juniata Co. Price Slashed to \$60,000 on this Starter Dairy Farm, 77 Freestalls, 25 Tie Stall, Milking Stable, extra large barn, 2 family home, new kitchen, 10 1/2 acres, additional land available for sale or lease. F 4473-11. Why Rent?

Key Real Estate  
108 York St.  
Hanover, PA. 17331  
717-632-6400

131 acres, 110 tillable, Centre County, modern barn, house, outbuildings, pool. Low interest, owner finance, down payment required. No realtors 814-349-8706.

150 acre farm Hopewell Township, 5 mile north of Shippensburg on Rt. 696 equipped for beef cattle, priced to sell, possession arranged. 717-423-5945.

Wanted To Rent - Dairy facilities with house. Medium acreage, will buy feed. Reply Lancaster Farming, P.O. Box 366, D-136, Lititz, PA. 17543.

Southern Huntingdon County dairy farm. 175 acres with 150 acres tillable, large barn with 74 stanchions, 2 nice homes, stream and good spring on property. Many other extras, \$315,000; Southern Huntingdon County dairy farm. 111 acres, extra good home with 7 rooms and 2 baths Good barn with 27 stanchions, milk house and wagon shed, \$125,000. Colonial Real Estate Agency 814-447-5511

Southern PA. York Co. drastic price reduction, gorgeous farm with stone Colonial on 121 acres, many outbuildings, excellent potential for variety of uses, call collect Caton Realty Co., 301-788-7700 Ila Weiskept, agent

**REAL ESTATE**

Investment woodland, excellent hunting and fishing in Central Maine. 167 acres, sub divided, \$150 per acre. 215-944-0247.

For Sale - L-shaped cottage on Susquehanna River in Clearfield County at Karthaus PA. near state game land, \$9400. Eve. 814-234-5828.

For Sale - Perry County 55 acre farm, 2 1/2 story house, large bank barn, outbuildings. 30 acres tillable, 25 acres woodland, pasture, stream. School bus goes by door. Good hunting, \$72,000. Partial financing to qualified buyer. 717-582-4824 or 717-653-8210.

45 acre farm north of Harrisburg, 3 bedroom house, swimming pool, bank barn and other buildings. 717-362-8870. Mr. Zimmerman, please call.

**FARM FOR SALE BY OWNER** - 106 acres with buildings - located Bloomsburg, Pa. \$1500.00 per acre. For more information contact G.L. Peery, 1060 N.W. 4th St., Boca Raton, Fla. 33432. Tel 305-368-8475.

23 acres of woodland near Petersburg, Huntingdon Co. Nice cabin site. Good hunting and fishing area, \$785 per acre. 717-653-1728.

For Rent - Crop Land, Berks County. 215-856-7619.

West Chester County - town of Yorktown Heights, 6 acres vacant w/400 ft. frontage on busy Rt. 6. Property zone garden center or farm use. Between two major shopping malls, 1 hour from New York City. Owner asking \$150,000 Terms Available. Call 914-528-7767.

For Sale By Owner - 181.19 acre Dairy Farm Creek thru farm, approx. 90 tillable, 42 stanchion barn, drop cleaner, silo with unloader, milkhouse with bulk tank, feed bin, 9 RM, 1 1/2 bath house. Possible financing, \$148,000. Bradford County. 717-297-3923.

**FOR SALE** - "47 Acre Farm South of Lebanon, PA." Lebanon County, \$240,000. Historic 1832 Limestone Farmhouse, has 4 bedrooms, 1 1/2 baths, 5 fireplaces, living room, formal dining room, kitchen, very original home, woodwork, hardware and door latches, random width flooring, 36x59 bank barn, rich limestone soil, trees and stream, 71 Spangler Road, Lebanon, West Cornwall Twp. Call Lee Reddinger. 717-949-2243.

Suburban Realty - 717-273-9358  
30 West Main Street  
Annville, PA 17003  
Write or Call for descriptive Brochure

For Sale - Beef Farm, 56 acres, barn and house w/stream, 5 1/2 miles west of New Columbia, Pa., Union County, White Deer Twp. 717-966-0140. Mr. & Mrs. Osborne Clouser, 11 S. Lime St., Millinburg, PA. 17844.

10 acres south of West Chester in Thornbury Township w/3 bedroom, 1700's stone house, bankbarn suitable for horses, cattle or sheep, pond, fenced pasture. All in very fine condition, in excellent area. \$295,000. Call Barbara McClure, AD & P REALTORS. 215-459-5500

For Sale - 360 acres of coal in Cambria County, Pa., near Carrolltown. Drill records of 32 inches of "D" coal Call 814-674-8756

165 acre farm, Southern Lycoming 150 highly productive Very good house and buildings, 2 silos, feed lot setup, 4,000 feet road frontage 717-745-7627

**REAL ESTATE**

If you're looking for a farm, land or have any other real estate needs, you'll find what you want in the Real Estate classifieds. 717-394-3047 or 717-626-1164.

Farmette, 12.66 shares, for sale by owner. 717-259-9983.

100 acre Southern NY farm, refurbished house, w/w carpeting, electric heat, wood stove, bank barn, machine shed, out buildings. Picture post-card setting. Valley inside a mountain. \$69,000. 215-754-7316.

183 acre dairy farm, Large stone house, stone summer house, dairy barn with 57 stalls, barn cleaner, block milk house, equipment shed, 12x60 silo. Near Shartlesville, Berks Co. Ask about owner financing. Cattle and milking equipment can be negotiated with tenant. Call Horning Farm Agency, Inc. 215-286-5183.

**FRANKLIN COUNTY** - 165 acre dairy, double 6 milking parlor, 3 silos, 2 homes. Call for more details; 180 acre dairy, pipeline milkers, some limestone, mostly all tillable; 150 acres, pipeline milkers, 50 free stalls, bulk tank. **FULTON COUNTY** - 170 acre farm, 70 acres tillable, bank barn, rancher, stream, pond; **HUNTINGDON COUNTY** - Land with stream, woods, field. Will sub-divide. Koons Real Estate, Inc., 717-597-8300 Roger Wildesin R.E.S. 717-263-5702.

**LAND FOR SALE** "Up to 100 acres located 16 miles from Williamsport and/or 3 1/2 miles from Jersey Shore, Pa Wooded land in Lycoming County, one of States best Areas for hunting. Fronts on Hwy. 44, available with access road into property \$750 per acre. Inquire to P.O. Box 901, Wmspt., Pa. 17703. Call 717-322-7120."

For Sale - 284 acre dairy farm, Lyc. Co. 64 tie stalls, box stalls, large barn, 24x70 silo, 2 agway machine sheds, shop, 2 farm houses. All Buildings in good condition Jacob Esh, Trout Run, PA. 17771.

For Sale - 180 acres in Virginia's southern Piedmont. Fenced and watered by 2 streams. Ideal for feed lot. 1/2 mile frontage on hard surfaced road 6 room dwelling, 5 log barns and hay barn. About 1/2 open and balance in growing timber. Good neighborhood 45 miles south of Lynchburg, 804-542-5320, \$135,000

New Bloomfield Area By Owner - nicely remodeled 4 bedroom 2 story, 1 1/2 bath, family room with beam ceiling and fireplace, custom oak kitchen and dining room with 2 large buildings as rental income on 8 1/2 acres of wooded ground, with beautiful view of mountains, \$69,900 717-582-2352.

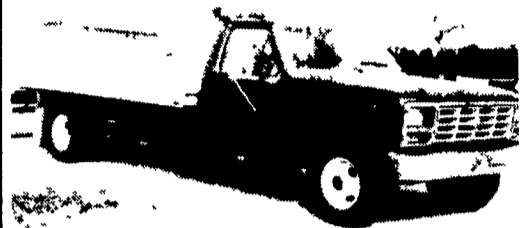
Ranches, groves, horse farms, businesses, acreage & more in NY & other states. Call or write for FREE CATALOG #56.

**American Farm Digest**  
3546 Watson  
St. Louis, MO 63139  
**(800) 325-9943**

**BROILER FARM**  
(2) 2 story houses built 1978, 53 acres, remodeled home, bank barn  
Manheim, R.D. #3  
**717-665-6656**

**FOR SALE**

1969 GMC 14' grain body dump  
1964 Int. 14' grain body dump  
1971 Brockway 318 Detroit, twin screw  
Call 215-346-7065



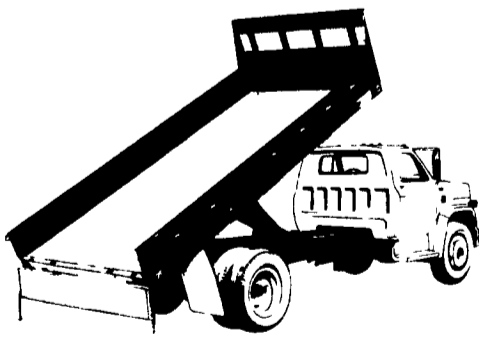
1983 Ford F350 with 16 ft. Aluminum Roll Back Body 351 4-Speed PS PB, Air AM-FM. Hydraulic Tow Bar, 12,000 Miles Like New  
**717-733-2873**

1976 D100 Pick-up 6 automatic, 46,000 original miles.  
1983 Dodge 400 2 door, front wheel drive, 19,000 miles, one owner, with air, 5 speed.  
1977 Volari 2 door, 6 cyl. w/air, SPECIAL \$1995.  
1980 Dodge club cab, 4WD w/cap & insert, one owner, 318 automatic, very clean.  
1979 B-100 Sportsman, one owner, 6 cylinder, green.

**PETTICOFFER DODGE, INC.**

Route 230 East Next to Shopping Center  
Elizabethtown, PA  
PHONE 717-367 1808

**Contractor Bodies by OMAHA STANDARD**



Rugged, all-steel 14" sides and 96" wide platforms Available with 28', 40' and 52' high heavy duty steel bulkheads with full width steel mesh windows Standard three-way express tailgate or optional double acting tailgate with forward controls Swaged (indented) 3-light cluster in rear outfall for better light protection and appearance These tough field-proven units, teamed with job-matched Omaha Standard hoists are total working units, superior to any on the market

**FARMERSVILLE EQUIPMENT INC.**

RD 4, East Farmersville Road  
Ephrata, PA 17522  
Located in the Village of Farmersville,  
Lancaster County  
**717-354-4271**

**Omaha Standard**

**1973 International Loadstar 1600**

12' refrigerated box, hydraulic lift gate, 19,700 GVW, 30,000 miles on rebuilt engine. Ideal for produce, dairy products, baked goods, etc. \$5,000. Call weekends 9 AM - 4 PM  
**717-687-6621**



1983 FORD F350 Dual Wheel Pickup 460 4-Speed PS, PB, Air AM-FM, Radial Tires, 10,000 GVW Two Tone Paint, 8,000 Miles, Like New  
**717-733-2873**