

HAY MARKETS



New Holland Hay

New Holland Sales Stables
Monday, May 7

Report supplied by auction
199 loads. Market steady with last week on all hay, straw and corn.

Alfalfa, 10 lds. choice 2nd, 3rd cutting, 150.00-180.00, several lds. 125.00-150.00, 1st cutting mostly 110.00-135.00; Mixed Hay, a few Alfalfa Timothy mix, up to 158.00, most of Mixed Hay was Clover Timothy mix, 110.00-135.00, few lds. off color, 95.00-110.00; Timothy, 105.00-146.00.

Clover, 122.00-152.00; Straw, 100.00-139.99, mostly 110.00-120.00; Ear Corn, 135.00-146.00; Oats, 3.05 bu.

Vintage Hay

Vintage Sales Stables
Thursday, May 10

Report supplied by auction
39 loads.

Alfalfa 121.00-149.00; Alfalfa Timothy mix 94.00-149.00; Timothy 100.00-103.00; Clover 107.00; Straw 86.00-121.00.

Dewart Hay

Dewart, Pa.

Monday, April 30

Report supplied by PDA

12 Loads Hay and 4 Loads Straw.
Mixed hay 51.00-112.00, mostly 80.00-102.00. Straw 61.00-76.00.

Good's Hay

Leola, Pa.

Wednesday, May 9

Report supplied by auction

185 loads.

Mixed Hay, 98.00-161.00; Straw, 98.00-120.00; Alfalfa, 95.00-185.00; Timothy, 95.00-150.00; Corn, 131.00-143.00; Oats, 2.95-3.10 bu.; Clover, 100.00-165.00; Corn Fodder, 88.00.

King's Auction

Kirkwood, Pa.

Tuesday, May 8

Report supplied by auction

41 loads.

Alfalfa 116.00-170.00; Alfalfa Mixed 119.00-166.00; Timothy & Timothy Mixed 93.00-120.00; Grass and Grass Mixed 117.00-120.00; Straw 95.00-108.00; Ear Corn 130.00-131.00.

Green Dragon Hay

Ephrata, Pa.

Friday, May 4

Report supplied by PDA

103 Loads Hay & 42 Loads Straw.
Alfalfa 102.00-183.00, mostly 120.00-171.00; Mixed hay 96.00-156.00, few to 171.00; Timothy hay, few 116.00-140.00; Clover, few 115.00-155.00; Orchard Grass, one load 129.00; Straw 104.00-134.00, one load 140.00; Ear Corn, 13 loads 136.00-150.00, few down to 113.00. Oats, one load 3.00 per bu.

Regional Hay

Friday, May 4

Report supplied by PDA

Alfalfa steady to strong, other hay and straw unevenly steady to weak.

Alfalfa 100.00-140.00; Mixed hay 80.00-95.00; Timothy Hay 75.00-90.00; Straw 60.00-85.00; Mulch 40.00-65.00.

Leinbach's Hay

Shippensburg, Pa.

Sat., May 5 & Tues., May 8

Report supplied by auction

62 loads.

Alfalfa 135.00-165.00; Mixed hay 77.50-142.50; Timothy 100.00-124.00; Clover 95.00-119.00; Bromegrass 90.00-125.00; Straw 65.00-90.00; Ear Corn 140.00; Oats 2.60 bu.; Firewood 30.00-35.00 pickup load.

Frederick Co.

Hay

Buckeystown, Md.

Thursday, May 10

Report supplied by auction

42 loads; market steady to strong.

Alfalfa two fancy 181.00 & 187.50, 4 good 130.00-144.00; Alfalfa Mixed 4 fair to good 131.00-155.00; Timothy 3 fancy 140.00-147.00, 5 fair to good 130.00-137.50; Mixed 2 good 140.00 & 142.50, 1 fair 116.00; 1 Bromegrass 125.00; 1 Meadowgrass 50.00; 1 Sudan-Sorghum 36.00; 13 good Straw 76.00-93.00, 1 dark 60.00; two loads Locust Posts 1.25 to 1.80 each; one load Fence Boards 1.90 ea.

New Wilmington Hay

New Wilmington, Pa.

Friday, May 4

Report supplied by PDA

46 Loads Hay and 5 Loads Straw.
Alfalfa 125.00-148.00, few to 172.50; Mixed hay 65.00-112.00, few 2nd cutting to 132.00; Timothy hay 75.00-100.00, one load 120.00; Clover, one load 100.00; Straw, 65.00-72.50; Ear Corn, 8 loads 110.00-116.00; Oats, 3 loads 2.85-3.50 per bu.

Belleville Hay

Belleville, Pa.

Wednesday, May 2

Report supplied by PDA

49 Loads Hay & 2 Loads Straw.

Alfalfa 140.00-175.00; Mixed hay 60.00-152.50, mostly 80.00-127.50; Straw, 2 loads 60.00-77.50.

Pa. Grain

Monday, May 7

Report supplied by PDA

Compared with last Monday's market for Southeastern, Central and South Central, PA., Corn steady to 5 cents higher, Wheat & Oats unevenly steady, Barley steady to weak, Ear Corn steady to 5.00 higher.

Prices paid delivered to dealers dock - (All prices per bushel, except Ear Corn per ton.)

Southeastern Pa.

Corn No. 2-y range 3.80-4.05, average 3.93, New Crop 2.95-3.15; Wheat No. 2 range 3.42-3.90, average 3.69, New Crop 3.33-3.58; Barley No. 3 range 2.75-3.00, average 2.88, New Crop 2.25-2.50; Oats No. 2 range 2.38-2.70, average 2.55; Soybeans No. 1 range 7.72-8.00, average 7.84, New Crop 6.80-6.99; Gr. Sorghum #2 range 3.00, average 3.00, New Crop 2.50; Ear Corn range 101.00-130.00; average 113.99.

Central Pa.

Corn No. 2-y range 3.75-4.00, average 3.88; Wheat No. 2 range 3.60-3.85, average 3.76; Barley No. 3 range 2.60-2.80, average 2.74; Oats No. 2 range 2.25-2.60, average 2.43; Soybeans No. 1 range 7.00-7.40, average 7.20; Gr. Sorghum #2 range 3.80, average 3.80; Ear Corn range 105.00-115.00; average 108.88.

South Central Pa.

Corn No. 2-y range 3.75-4.00, average 3.88; Wheat No. 2 range 3.40-3.70, average 3.53; Barley No. 3 range 2.75-3.00, few reported 3.20, average 2.92; Oats No. 2 range 2.30-2.80, average 2.58; Ear Corn range 115.00-130.00, few reported

100.00, average 119.88.

Southeastern, Central & South Central Summary

Corn No. 2-y range 3.75-4.00, average 3.90; Wheat No. 2 range 3.40-3.90, average 3.69; Barley No. 3 range 2.70-3.00, average 2.85; Oats No. 2 range 2.25-2.70, average 2.50; Ear Corn range 100.00-130.00, average 113.32.

Western Pa.

Corn No. 2-y range 3.55-3.90, average 3.70; Wheat No. 2 range 3.50-3.70, average 3.57; Barley No. 3 2.40, average 2.40; Oats No. 2 range 2.20-2.50, average 2.37; Ear Corn range 90.00-105.00, average 96.67.

East Coast Carlot

Wednesday, May 9

Report supplied by USDA

Compared to Tuesday's close: Limited sales of Prime Special Fed Veal generally steady. Good and Choice Boning Veal steady to 2.00 lower in relatively light test and comparison, but overall prices firm with last week. Mixed Lamb and Spring Lamb slow to develop, steady to firm undertone. Boneless Beef and Trimmings not well tested early, undertone firm.

VEAL CARCASS

Prime (Special Fed)

Hide On 100 Head

220-280 lbs. LTD 182.00-183.00, generally steady.

Good & Choice

Boning Type

Hide On

Northeastern Suppliers: 65-75 lbs. 94.00-96.00, steady-1.00 lower; 55-64 lbs. 92.00-94.00; 45-54 lbs. 90.00-92.00; 35-44 lbs. 88.00-90.00; 34 lbs. down 86.00-88.00.

Inshipped: 71-80 lbs. 98.00-100.00, 2.00 lower than Monday; 61-70 lbs. 96.00-98.00; 51-60 lbs. 94.00-96.00; 41-50 lbs. 92.00-94.00; 30-40 lbs. 90.00-92.00.

Beef Trimmings

1 Load

65% Chem Lean Fresh 82.00.

NEW HOLLAND SALES STABLES, INC. - THE ACTION AUCTION

MONDAY

FAT HOGS

EARLY BIRD HOG SALE

For Your Protection Your Hogs Must Be Identified

10:00 AM

HORSES MULES

11:00 AM

HAY
STRAW
GRAIN

1:30 PM
BEEF SALE
CALF, SHEEP,
GOATS

WEDNESDAY

12:00 NOON

DAIRY COWS

HEIFERS, BULLS

NEW HOLLAND SALES STABLES, Inc.

12 Miles East of Lancaster
on Route 23, New Holland, Penna

The Action Auction

717-354-4341

Mgr. - Abe Diffenbach - 717-393-4464

Norman Kolb - 717-397-5538

Field Representatives

Alan Diffenbach 717-656-9806

Luke Eberly 215-267-6608 - 738-1865

WEDNESDAY

FEEDER PIG SALE

1:30 P.M.



We endeavor to keep our
barns cleaner than yours.
State graded until 12 Noon

THURSDAY

11:00 AM

BULLS -

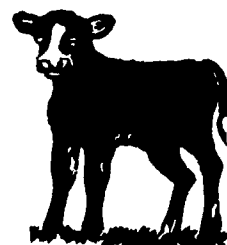


STEERS -
BEEF COWS



3:30 P.M.

CALVES



SHEEP
GOATS



Market your livestock thru New Holland Sales, your neighbor does
Pick-up your check before you leave