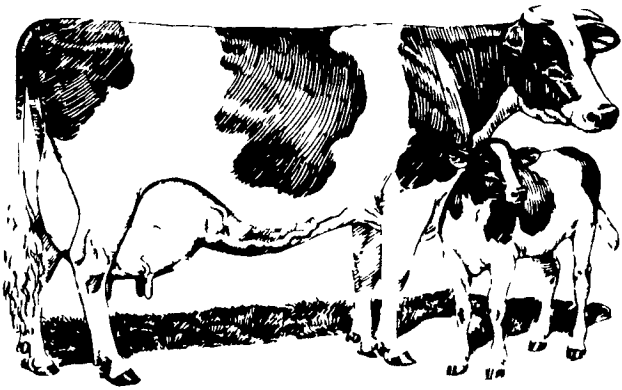


FEED 'EM RIGHT



30¢ Per Day - provides her with a daily diet specifically formulated for pre-freshening cows.

Pennfield Dry Cow Program

The 60 day period before freshening is a most important time in the life cycle of the cow. During the period she will "store-up" vitamin, mineral, and energy reserves which she will draw on during her following peak of lactation. Over 50% of her calf weight will develop during this period, and being a good mother, she will supply nutrients to her calf before she will rebuild her own body reserves.

Good dairymen have seen that proper feeding management during this critical-period, means **easier calving**, **better appetite** during early lactation, and cows **breed back better** because they have nutritional reserves to draw on during peak lactation.

Balanced Nutrition Is The Key

A properly formulated dry cow program allows the dairymen to "control" the nutrient intake of the cow. Calcium and phosphorus levels must be properly maintained and roughages should be checked for protein, energy, calcium and phosphorus.

#580
PENNFIELD
Dry Cow Conditioner
with Selenium

2 Lbs. Per Day
Use With Roughage Program
LEGUME HAY
and
CORN SILAGE

#581
PENNFIELD
Dry Cow Conditioner
With Selenium

2 Lbs. Per Day
Use With Roughage Program
GRASS HAY
and
CORN SILAGE

#582
PENNFIELD
Dry Cow Conditioner
with Selenium

2 Lbs. Per Day
Use With Roughage Program
CORN SILAGE
and
LIMITED
GRASS HAY

Pennfield Offers You

- **Roughage Testing --**

Pennfield customers receive "no charge" roughage testing at our laboratory located in Lancaster, Pa. Testing normally takes 10 working days.

- **Dry Cow Program --**

A printed feeding program shows correct quantities of roughages to be fed along with 2 lbs. of Pennfield "Dry Cow Conditioner with Selenium."

- **Trained Dairy Specialists --**

Pennfield has 10 Dairy Specialists trained to help the dairymen develop sound feeding programs.



Order Today — Call Toll Free

From Pa.
1-800-732-0467

From Md.
1-800-233-0202

pennfield feeds

Quality - Performance - Service