

## Class I milk prices \$14.85 for June

ALEXANDRIA, Va. — Middle Atlantic Order Market Administrator Joseph D. Shine today announced a Class I milk price of \$14.85 per hundredweight for June 1984.

This price is down one cent from May and is 44 cents below last June's Class I price. Order No. 4 prices are announced for milk

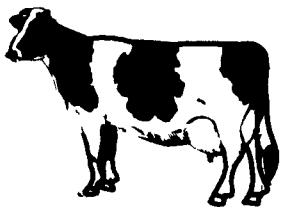
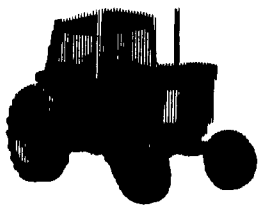
testing 3.5 percent butterfat f.o.b. plants located within 55 miles of Philadelphia, and also within 75 miles from the nearer of Washington, DC, or Baltimore, Md. There is also a 6-cent direct-delivery differential applicable to producer milk received at plants located within 55 miles of Philadelphia.

Shine announced a Class II milk price of \$12 per hundredweight for

April 1984 and a butterfat differential of 16.4 cents for the month. The Class II price dropped five cents from March while the butterfat differential increased one-tenth of a cent.

The June Class I price and the April Class II price are based on the April 1984 Minnesota-Wisconsin manufacturing milk price of \$12.07 per hundredweight at a 3.5 percent butterfat content.

Lancaster Farming, Saturday, May 12, 1984—A39



## TWO DAY FARM AUCTION

HARMONY HILL FARMS  
SOUTH AUBURN, PA, SUSQUEHANNA COUNTY

MAY 18 & 19, 1984

Located half-way between Laceyville, Pa. & Auburn Center, Pa. Follow auction arrows approx. 5 mi. from Rt. 6 in Laceyville or arrows from Rt. 267 at Auburn Center. (Approx. 4 mi.) Approx. 30 mi. from Binghamton, N.Y. & 35 mi. from Scranton, Pa.

### 200 — HEAD OF CHOICE DAIRY CATTLE — 200

130 MILKING AGE ANIMALS & BRED HEIFERS, 17 OPEN HEIFERS, 53 ANIMALS UP TO 12 MOS. AGE

194 HEAD HI-GRADE HOLSTEINS, 6 HEAD JERSEY & CROSSES

The 130 milking age animals include: 42 - First, Second, or Third Time In  
24 - Fresh 1 mo. or less  
23 - 2 to 3 mo. fresh

SELLING FRIDAY, MAY 18, 1984

MATURE COWS & BRED HEIFERS

(Approx. 130 animals) at 11:00 A.M.

DHIA ROLLING HERD AVERAGE AS OF 4/25/84: 13,354m, 3.8T., 511F.

SAMPLE OF COWS I THINK YOU WOULD LIKE:

No. 43	309 day	for	19,617 m	624 F.
No. 45	303 day	for	19,633 m	673 F.
No. 90	297 day	for	17,745 m	718 F.
No. 56	Proj.		19,026 m	531F. as 1st Calf Heifer

Several cows already over 19,000m. this lactation. All cattle 30 day blood & TB tested, Preg. examined-Shipping fever shots-Interstate health charts, issued day of sale.

AUCTIONEERS NOTE: The Purdy's have been well respected dairymen for many years and have done a fine job of developing a good A-1 sired herd with excellent disposition & good udders. The Purdys have decided after 35 yrs. in farming, to discontinue dairying completely & sell everything to the highest bidder.

SELLING SAT., MAY 19, 1984 at 11:00 A.M.

TRACTORS, MACHINERY & REMAINING LIVESTOCK

(Approx. 70 head of open heifers, yearlings, and calves)

MACHINERY INCLUDES: TRACTORS: J.D. 4440, Cab, Air, Powershift, Dual remotes, Dual 20.8 x 38 tires, 3 pt. (3,000 hr.); J.D. Quick hitch for 4440 sells separately, J.D. 4000 w/fe. Windsor Cab, side console, dual remotes, #48 loader (selling 2 ways), Case 1370 w/fe, dual remotes, 20.8 x 38 tires (1900 hr.); selling separately: 1 set of duals 20.8 x 38 with Peterson 3 1/2" hubs (new wheels & hubs, 1 used tire); D.B. 1210 w/fe, 3 pt., 18.4 x 30 tires (1600 hr.) FIELD EQUIPMENT: N.H. 890 chopper (3 heads sell separate), 2R, P/U, direct cut; 2-Dion silage wagons (3 Btr. & roof) on Dion tandem gears & flotation tires; Dion N-14 Blower; N.H. #27 Whirlfeed Blower; Case 12' Chisel Plow is presently 3 pt. but with attachments for conversion to trailer type; Long offset Disc 12' wide w/24" Discs; Pittsburg 24' Transport Harrow; Hesston #1014 12' Hydro-Swing Mower Conditioner; M.C. Flail Mower (Bad Gear Box); N.H. 55 Rake, Fahr Centipede Teddar (2 shafts); Oliver 62-T Baler; Brillion Cultipacker (old seeder); Cyclone Seeder; J.D. 13 hole Grain Drill; Shaver Post Driver; 2-J.D. Running Gears; N.H. 346 Barrel Spreader; Hawk-Bilt Barrel Spreader; 1976 Dodge 1/2 T. 4 WD Truck (Rough); Howard Rotavator 6' Tlr. Type; 2-Pr. 20.8 x 38 Tire Chains; Maxi-Power 55 KW Alternator; Air Compressor; 2-275 Gal. Fuel Tanks; 1-550 Gal. Fuel Tank & Pump; Gas Boy Elec. Fuel Pump.

FEEDING EQUIPMENT: 4 - Harvestore Silos: - 1-20x30; 1-20x50; 2-20x80 (NOTE: 1-20x80 sells w/reserve by Lease Co. All others sell as all else does, to the highest bidder). 2-Goliath unloaders; 2-Hercules Unloaders; 2-Patz 14' unloaders; Several Star-Line Elevators at various lengths; N.H. Hay & Grain Elevator on wheels (Bad Chain); 1-Innovative Mix Wagon w/Scales (Good One); 2-Weaverline Elec. Feed Carts 24 & 30 Bu.; AO Smith Roller Mill; Extra Goliath Chains; Feed Carts; Belting, etc.

BARN EQUIPMENT: NOTE: TO BE SOLD ONLY IF THE REAL ESTATE DOES NOT SELL: 2-Surge Alamo 100 plus vacuum pumps; Cornell 16" Barn Cleaner Chain Clockwise Hi-Flites Approx. 260'; Cornell 14" Chain Approx. 300' Counterclockwise; 2-Bock Oil fired Hot Water Heaters; Barn Fans 6-36", 2-20"; Metal gates, several Carry Pails.

PRODUCE: Approx. 30 Ac. rye metal or less, probably nearing head by sale time, few hundred bales of good 1st cutting hay.

OTHER: 4-20T. piles of lime, approx. 3 1/2t. Agway 3/15 fertilizer, approx. 3/4T. 10-20-20 fertilizer, baler twine, etc.

Selling for a neighbor: 1-Swartz Mix-wagon.

REAL ESTATE TO BE OFFERED: 330 Acre Dairy Farm, 200± acres tillable of good shale soil in good state of fertility; 2 - tie stall dairy barns (1-81 cow barn, 1-56 cow barn) Both with cleaners; 1 1/2" Surge Pipelines & 800 Gal. Craft Bulk Tanks. 5-14x40 Concrete silos sell with the farm; 2 comfortable homes (1-5 room, 1-9 room), & other out-buildings.

OWNERS RESERVE THE RIGHT TO ONE BID ON THE REAL ESTATE. CONTACT AUCTIONEER FOR FURTHER DETAIL.

REAL ESTATE TERMS: \$5,000. down at conclusion of bidding. Balance at closing (30-60 day).

TERMS: CASH OR GOOD CHECK

TENT, IF NEEDED

LUNCH AVAILABLE BOTH DAYS

OWNERS: EUGENE & DOROTHY PURDY

SALES MANAGER & AUCTIONEER

BILL MEAD, MONTROSE, PA.

(717) 278-2901 or (717) 278-9702

Thinking of selling? Give us a call...we'd be happy to talk to you.

## LARGE FARM MACHINERY AUCTION

SATURDAY, MAY 26, 1984 9:00 A.M.

Large items sold between 10:A.M. & 3:00 P.M. at Charlis McCarthy's machinery yard, in Meshoppen, PA, JUST OFF ROUTE 6. ARROWS.

Selling a 10 ACRE FIELD FULL OF farm machinery.

You name it - it's here and probably in duplicate. Watch next week for complete listing.

ABSOLUTELY NO BID-INS and NO RESERVE.

NOT GOING OUT OF BUSINESS

TERMS: CASH OR GOOD CHECK

LUNCH

OWNER,

CHARLES MCCARTHY

SALES MANAGER & AUCTIONEER:

BILL MEAD, MONTROSE, PA. 18801

717-278-2901

AU-2072-L

THINKING OF SELLING? GIVE US A CALL.

WE'D BE HAPPY TO TALK TO YOU! ITEMS OVER \$1,000.,

25% DOWN SALE DAY, BALANCE IN 10 DAYS WITH

APPROVAL BEFORE SALE TIME. ITEMS TO BE PAID

IN FULL BEFORE REMOVED.



A LESSON WELL LEARNED...

LANCASTER FARMING'S CLASSIFIED ADS

GET RESULTS!

Phone:

717-394-3047

or

717-626-1164

## BEN K. STOLTZFUS COMPLETE DISPERSAL

TUESDAY, MAY 22, 1984

11:00 A.M. GORDONVILLE, PA

Directions: Sale at the farm located east of Lancaster on Rt. 340. First farm east of Intercourse. Farm in on the right.

### — 75 REGISTERED HOLSTEINS 75 —

CERT. & ACC.

CALFHOOD VAC.

40 Cows (Over 1/2 are 4y or less) 35 Bred Heifers & Calves

Classification & Records

1 EX, 11 VG, 15 GP  
4 over 24,000m 6 more over 20,000m  
12 more 17,000m-20,000m

From Top Sires

Mars Tony- 7, Bell- 10, Pete- 3,  
Valiant- 3, Wiseman- 3, Columbus- 2,  
Fagin- 2, Spirit- 2, Glendell- 1

### SECOND GENERATION EXCELLENT AND DAUGHTER SELL

BE-ANN RAG APPLE DOVE (EX-91)

5-1 335d 22,928 3 4% 780  
A powerful second generation EX Elevation granddaughter from an EX Kingstead Ivanhoe with 6-9 305d 25,254 3 5% 888 and 174,678M lifetime Dove sells bred in Jan to Bell, with 2 daughters, 2 grand-daughters, and 2 maternal sisters

BE-ANN CONDUCTOR BELLE (VG)

3-1 141d 10,243 3 5% 359(Inc)  
A Conductor granddaughter from the second generation EX Dove Bred Dec '83 to Marshfield Elevation Tony From a truly powerful breeding family

### OTHER FEATURES

SWAMPY-HOLLOW ARLINDA TESSIE (VG-87)

3-0 356d 23,074 3 6% 823  
Fresh again in Dec, milking 100 pounds per day and bred to Mars Tony Her VG dam has 21,700m 3 7% and her 2d dam has 778f and a 3E-94 maternal sister with 1100f The 3d dam is VG, 4th dam 2E-91 and 5th dam VG-87 with 222,000M lifetime

BE-ANN ELEVATION POLLY (VG-86)

3-2 109d 9,003 3 7% 333(Inc)  
A tall, fancy granddaughter of Elevation from a GP-83 Fury Ivan with 3-3 365d 20,248 3 6% 726. 2d dam has 21,821 3 9% 853 Polly is a 3-yr-old show prospect who could be an end-stall cow in many barns

LAMONDALE ELEVATION PEARL (VG-88, EX-MS)

6-2 108d 10,417 3 7% 387(Inc)  
A beautiful Elevation daughter selling with her Nov '83 Valiant heifer and bred back to Valiant

BE-ANN IVANHOE MODEL (VG-87)

6-11 365d 24,050 4 1% 990  
Dam has 21,621m Model sells with 2 daughters

BE-ANN CHARMCROSS RANDY (VG-87)

3-11 334d 16,889 3 9% 663  
By Charmcross and selling with her heifer by Bell who is bred to Mars Tony Randy is rebred to Bell Also selling her GP-84 dtr bred to Pete

BE-ANN ELEVATION LULU (VG-88)

5-2 365d 26,946 3 7% 996  
An own daughter of Elevation working on another good record and bred to Spirit

BE-ANN APOLLO PATSY (VG-89)

7-7 331d 21,869 3 2% 689  
Making another top record and bred to Bell Also selling is her VG 37 Milestone dtr with 2-8 346d 18,483 3 6% 666, milking well again this lactation and due in Aug to Fagin Seven head from this family sell

BEN K. STOLTZFUS

Box 368

Gordonville, PA 17529

717-768-8839

Write For Catalog On This Top Herd Today!

PA HOLSTEIN ASSN.  
Sale Managers  
839 Benner Pike  
State College, Pa  
814 234 0364

Sale jointly managed by:

BACKUS ASSOCIATES, INC.  
Sale Managers & Auctioneers  
Mexico, NY 13114 (315) 963-2211



STRIKE IT RICH!

SELL IT

WITH A

LANCASTER FARMING CLASSIFIED



PUBLIC SALE

SAT., MAY 26, 1984  
(Rain date June 2nd)  
10:30 a.m. (DST)

Selling at auction the complete collection of Restored Gas Engines, Antique Household Appliances and Hand Tools belonging to Mr. & Mrs. James Riley of Rising Sun, MD  
Listing of items to follow at later date