

CHECK OUT THE TOTAL PERFORMANCE OF THESE ABS SIRE



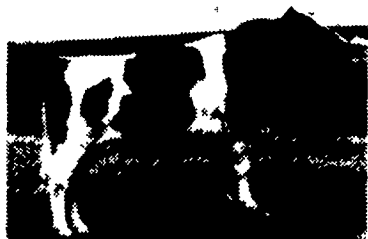
✓ **+745 TPI**
29 H2851 **Vallant's** fancy daughters are stylish, well-balanced with exceptional rear udders. . . . PDS + 169, PDM + 1,274, PD% + .03, PDBF + 51, PDT + 2.14 and TPI + 745



✓ **+635 TPI**
29 H4280 **Cedric's** high-yielding daughters are tall, angular and have strong fore udders. . . . PDS + 134, PDM + 1,102, PD% - .01, PDBF + 37, PDT + 1.56 and TPI + 635



✓ **+665 TPI**
29 H4195 **Maiz** is ABS' number one bull for milk yields. . . . PDS + 166, PDM + 1,757, PD% - .17, PDBF + 31, PDT + 0.76 and TPI + 665.



✓ **+675 TPI**
29 H4000 **Columbus'** daughters offer superb milk and type. . . . PDS + 169, PDM + 1,492, PD% - .06, PDBF + 43, PDT + 1.05 and TPI + 675.

Choose high-ranking performance.

The January '84 lineup of ABS sires features the all-around top total performance you need to stay competitive. Check out the genetics we offer. . .



CONTACT YOUR LOCAL ABS REPRESENTATIVE

IN PENNSYLVANIA

Allenwood, PA
Bangor, PA
Carlisle, PA
Clifford, PA
Coburn, PA
Columbia, PA
Dornsife, PA
East Earl, PA
Holtwood, PA
Lebanon, PA
Leola, PA
Linden, PA
Mansfield, PA
Mifflinburg, PA
Mifflintown, PA
Millville, PA
Prospectville, PA
Reading, PA
Reedsville, PA
Rothsville, PA
Stewartstown, PA
Thomasville, PA
Ulysses, PA
West Grove, PA

George Showers
Eric Heinsohn
Wayne Piper
William Horton
Wendel Musser
James Charles
Steve Kieffer
Darvin Yoder
Paul Herr
Paul Martin
Lynn Gardner
Larry Bower
Harold Robson, Jr.
John M. Beachy
Mervin Zendt
Wilmer Hendricks
William Tyner
Andrew Cooper
Chester G. Selfridge
Keith Campbell
Tom Engle
Ira Boyer
Bonnie Barker
Brian Geesaman

717-538-1812
215-588-4704
717-532-4401
717-222-3224
814-349-5310
717-898-8694
717-758-1714
717-733-0966
717-284-4592
717-949-2381
717-656-6700
717-323-9710
717-662-7731
717-966-1344
717-436-6386
717-458-5949
215-542-8479
215-378-1212
717-667-3181
717-733-1226
717-993-6836
717-225-3758
814-848-7674
215-869-9187

IN NEW YORK

Johnson, NY
Pen Yan, NY

Peter Vander Schaaf
Calvin Crosby

914-355-1692
315-526-6144

IN DELAWARE

Kirkwood, PA

Dan Rush

717-529-6548

IN NEW JERSEY

Baptistown, NJ
Elmer, NJ
Lambertville, NJ
Port Murray, NJ

Cindy Gordeuk
Cyndy Hetzell
Robert Fulper
Robert Kayhart

201-996-2088
609-455-8187
717-658-7316
201-689-2605

IN MARYLAND

Detour, MD
Mt. Airy, MD

Jim Carmack
Allan Pickett

301-775-7221
301-663-4191

(Continued from Page A2)

Frame No. 1, 400-500 lbs. 48.00-53.50. Bulls, Medium Frame No. 1, 400-600 lbs. 42.00-47.00.

CALVES: 181. Vealers about steady. (few) Choice 80.00-90.00; Good 73.00-81.00; Standard & Good 90-120 lbs. 55.00-61.00; 60-85 lbs. 47.00-57.00.

FARM CALVES: Hol. Bulls 90-125 lbs. 70.00-107.00, few 110.00-122.50.

HOGS: 206. Barrows and gilts steady. US No. 1-2 210-240 lbs. 48.00-49.00, No. 1-3 200-250 lbs. 47.00-48.10; No. 2-3 200-255 lbs. 46.00-46.75; No. 1-3 140-160 lbs. 44.25-48.75, lot 120 lbs. at 50.00; Sows US No. 1-3 300-600 lbs. 42.00-45.75. Boars 31.00-33.50.

FEEDER PIGS 13. (few) US No. 1-3 50-60 lbs. 35.00-40.00 per head.

GOATS 8. 10.00-31.00 per head.

(Continued from Page A17)

3 20-35 lbs. 18.00-35.00 per head; No. 1-3 35-50 lbs. 27.00-44.00; No. 1-3 50-85 lbs. 35.00-53.00.

3 GRADED FEEDER PIG SALES: 2911. Compared with 1745 head last week, and 2724 head a year ago. All sales by CWT. Feeder Pigs uneven, mostly 3.00-9.00 lower. US No. 1-2 25-40 lbs. 110.00-136.00, some to 151.00, 40-50 lbs. 90.00-112.00, 50-60 lbs. 85.00-105.00, 60-85 lbs. 71.00-100.00; US No. 2-3 20-35 lbs. 84.00-116.00, 40-55 lbs. 79.00-94.00.

SHEEP: 1249. Compared with 1137 head last week and 668 head a year ago. Lambs unevenly steady. High Choice & Prime 35-100 lbs. 70.00-80.00, few to 93.00; Choice 30-110 lbs. 58.00-73.00; Good 30-90 lbs. 56.00-66.00. Sl. sheep: 8.00-25.00, few down to 2.00.

Jersey breeders to gather in Monterey

COLUMBUS, Ohio — Jersey breeders from across the United States will gather June 28-30 in Monterey, Calif., for the Annual Meetings of The American Jersey Cattle Club and National All-Jersey Inc. This year marks the 116th Annual Meeting of the AJCC and the 26th for NAJ.

The group will headquarter at the Doubletree Inn, at Fisherman's Wharf in Monterey. The three-day event will include meetings of the two organizations, the 27th Annual National Heifer Sale, awards presentations and sightseeing and shopping tours in the area.

The NAJ Board of Directors meeting will be held Thursday morning, with the AJCC Board of Directors meeting scheduled for the afternoon. Registration for those attending the meetings begins Thursday afternoon, June 28.

The 27th Annual National Heifer Sale will be held Friday afternoon, offering top-quality young Jerseys from across the nation.

The Young Jersey Dairymen Awards Breakfast will begin the day's events on Saturday, June 30. The 116th Annual Meeting of the AJCC will follow the breakfast, with Ed Fisher, Turlock, Calif., being presented the award as the Outstanding Genetic Recovery Agent for 1984.

A shopping excursion to Carmel is planned for the morning, with a tour of Cannery Row, the historic Carmel Mission and a drive along the California Coast on the agenda for the afternoon.

The Annual Jersey Breeders Banquet will be held Saturday evening. Dr. C.A. "Tony" Ernstrom, Logan, Utah, will receive the 1984 Distinguished Service Award from the AJCC. Walter and Joan Brown, Hughson, Calif., will be recognized as the recipients of the Master Breeder Award.

For more information about the AJCC-NAJ Annual Meetings, contact The American Jersey Cattle Club, P.O. Box 27310, Columbus, Ohio, 43227, phone 614-861-3636.

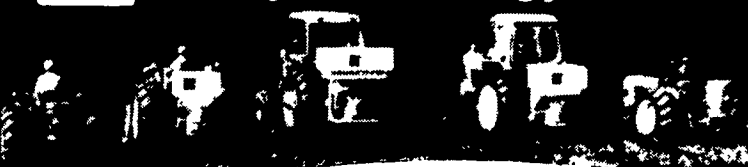
Chester meeting

ATGLEN — The newly-organized Chester County Sheep and Wool Growers Association will meet at 6 p.m. Thursday at the Breezewood Farm of Bill and Joan MacCauley, Atglen.

Dr. Clair Engle, Penn State sheep specialist, will hold a seminar on market lambs. The association will also elect officers.

A lamb barbecue will be served and the cost is \$3.00. Pre-registrations can be made by contacting the Chester County Extension Office.

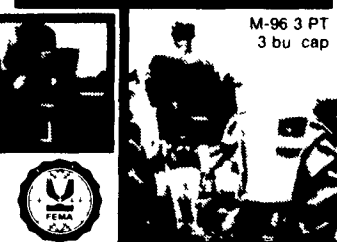
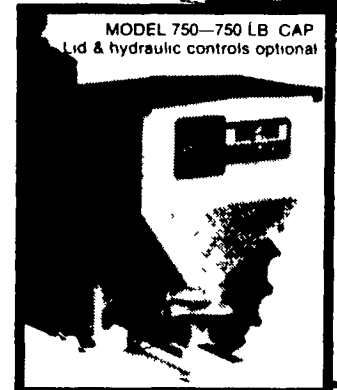
Herd Always An Energy Saver...



...SAVES FUEL & MAN HOURS

HERD has what you need to cut your energy use. Both fuel and physical energy are saved with HERD broadcasters. HERD also has a mini-hopper so you can spread both small seeds as clover and alfalfa and oats at the same time doing two jobs in one fast trip and with no strips. Cover up to 40 acres per hour. With HERD's ability to center the spread you can use HERD broadcasters for all types of seeds, fertilizers, herbicides and insecticides with an even pattern guaranteed. HERD has 7 sizes to choose from: from 77 lbs. to 2440 lbs. or 1/2 bu. to 32 bu. 3-pt. electric or V-belt driven so you can get the one of your choice.

The GT-77 (shown right) has been promoted from a garden tractor/seeder (shown) to a farm seeder. Many are putting this seeder on ATVs, 3-wheel Motor Bikes with flotation tires and an assortment of vehicles to get the seeding done when ground is wet and soft. Why not have fun while doing your seeding?



"For your nearest dealer, please contact —"



HAMILTON EQUIPMENT, INC.

Wholesale Distributors
567 South Reading Road
P.O. Box 478 Ephrata, PA 17522
PHONE: 717/733-7951