

DEALER IN ALL KINDS OF LIVESTOCK

Also Crippled & Down Cattle

MARLIN S. IRWIN

Quarryville, PA
PH: 717-786-3016

Public Auction Register

Closing Date Monday 5:00 P.M.
of each week's publication

FRI SEPT 7 7:00 P.M. Holstein Promotional Sale at New Holland Sales Stables, Inc. 12 miles East of Lancaster off Rt. 23 in New Holland, PA. Abe Dittenbach, Manager

FRI SEPT 7 7 P.M. Public Auction of a Holstein Promotional Sale Located at New Holland Sales Stables, Inc. 12 miles East of Lancaster, off Rt. 23. Abe Dittenbach & Norman Kolb, Auctioneers

TUES SEPT 11 7 P.M. Public Sale of Feeder Cattle and Feeder Pigs at Carlisle Livestock Market exit 12 off I-81, 717-249-4511

FRI SEPT 14 1:30 P.M. Public Auction of State Grade Consignor Feeder Pig Sale Located at the Carlisle Livestock Market, Inc.

FRI SEPT 14 7 P.M. Public Auction of the District Relief Heifer Sale for the Church of the Brethren Located at the Lebanon Fairgrounds, Lebanon, PA. Claire Kreider, Manager

THURS SEPT 20 Monthly Cow Sale at Mel Kolb, Inc., Maryland Farm, Woodsboro, MD, 1/2 mile North West of Woodsboro on Rt. 550 in Frederick Co.

SAT SEPT 22 Public Auction Benefit Sale for West Fallowfield Christian School Located 2 miles south of Atglen, PA along Old Rt. 41, Newport Pike. Leon Kurtz, Auctioneer

TUES SEPT 25 7 P.M. Public Sale of Feeder Cattle and Feeder Pigs at Carlisle Livestock Market exit 12 off I-81, 717-249-4511

Lancaster Farming, Saturday, May 12, 1984—D47

SAT SEPT 29 12 Noon Red Carpet Horse Sale Public Auction of Registered Quarter, Appaloosa and Thoroughbred Horses Located at the Cambria Co. Fairgrounds Edensburg, PA. Kevin Hines and Chris Rowe, Owners. Davis and Templeton, Auctioneers

SAT SEPT 29 Consignment Heifer Sale to Benefit Elementary Christian Schools Located 6 miles east of Lancaster at the Guernsey Sales Pavilion. Larry Kennel, Manager

THURS OCT 4 Monthly Cow Sale at Mel Kolb, Inc. Lancaster Farm, 2220 Dairy Road, Lancaster, PA

TUES OCT 9 7 P.M. Public Sale of Feeder Cattle and Feeder Pigs at Carlisle Livestock Market exit 12 off I-81, 717-249-4511

WED OCT 10 12 Noon Public Auction of the Western PA Sale of Stars Located in Butler, PA

FRI OCT 12 1:30 P.M. Public Auction of State Grade Consignor Feeder Pig Sale Located at the Carlisle Livestock Market, Inc.

SAT OCT 13 10:00 A.M. Annual Fall Heifer Sale at New Holland Sales Stable, Inc. 12 miles East of Lancaster off Rt. 23 in New Holland, PA. Abe Dittenbach, Manager

THURS OCT 18 Monthly Cow Sale at Mel Kolb, Inc., Maryland Farm, Woodsboro, MD, 1/2 mile North West of Woodsboro on Rt. 550 in Frederick Co.

TUES OCT 23 7 P.M. Public Sale of Feeder Cattle and Feeder Pigs at Carlisle Livestock Market exit 12 off I-81, 717-249-4511

TUES OCT 30 7 P.M. Public Sale of Feeder Cattle and Feeder Pigs at Carlisle Livestock Market exit 12 off I-81, 717-249-4511

WED OCT 31 12 Noon Annual Dairy Show and Sale at New Holland Sales Stables, Inc. 12 miles East of Lancaster off Rt. 23 in New Holland, PA. Abe Dittenbach, Manager

NOVEMBER

FRI NOV 2 Monthly Cow Sale at Mel Kolb, Inc. Lancaster Farm, 2220 Dairy Road, Lancaster, PA

FRI NOV 9 9:00 A.M. Public Sale of Farm Equipment at New Holland Sales Stable, Inc. Located 12 miles East of Lancaster off Rt. 23 in New Holland, PA. Abe Dittenbach, Manager

FRI NOV 9 1:30 P.M. Public Auction of State Grade Consignor Feeder Pig Sale Located at the Carlisle Livestock Market, Inc.

THURS NOV 15 Monthly Cow Sale at Mel Kolb, Inc., Maryland Farm, Woodsboro, MD, 1/2 mile North West of Woodsboro on Rt. 550 in Frederick Co.

DECEMBER

FRI DEC 7 Monthly Cow Sale at Mel Kolb, Inc. Lancaster Farm, 2220 Dairy Road, Lancaster, PA

FRI DEC 14 1:30 P.M. Public Auction of State Grade Consignor Feeder Pig Sale Located at the Carlisle Livestock Market, Inc.

THURS DEC 20 Monthly Cow Sale at Mel Kolb, Inc., Maryland Farm, Woodsboro, MD, 1/2 mile North West of Woodsboro on Rt. 550 in Frederick Co.

NEW HOLLAND SALES STABLES INC. ANNUAL SPRING HEIFER SPECIAL (All Grades)

SATURDAY, MAY 26, 1984
10:00 A.M.

Located 12 miles East of Lancaster, Pa. Just off Rt. 23, New Holland, Pa.



Approx. 1000 head of Holstein heifers all ages, small calves to fresh heifers. Several consignments w/small heifer calfhood vac. Some I.D. grades with records on dams.

Many consignments of good big bold heifers due to freshen in summer & fall.

Some close springing and fresh heifers. Vaccinated, Breeding Age Heifers. Breeding Age Bulls.

(Note to Consigners:) Please have animals at Sale Barn Friday before sale with 30 day health charts, vet check, breeding information, etc. with trucker. We will have all animals checked by vet unless proper information accompanies heifers.

For More Information Phone:
Abe Dittenbach 717-354-4341

or
Norm Kolb 397-5538

Trucks Available To Go Anywhere

Reg. Holstein Heifer Sale Sat., June 23

Local Motels



PRIVATE SALE

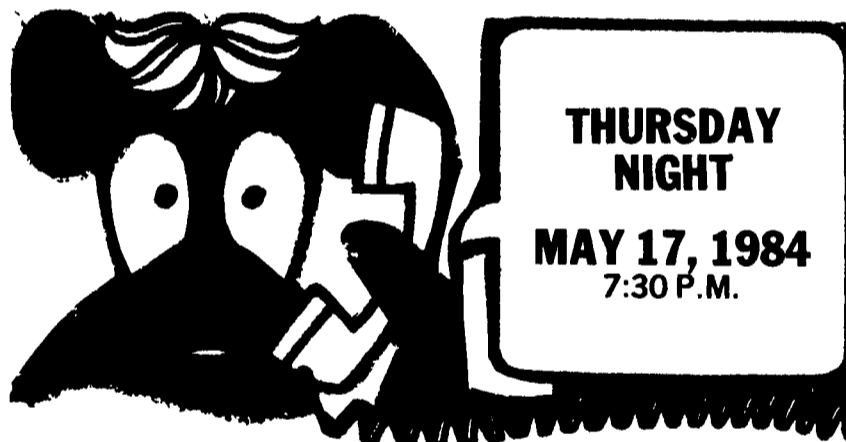
43 Head of Holstein. Home raised herd. All stages of lactation. 12 recently fresh. 7 dry and springing. Balance due summer and fall. Priced at \$200 per head below going cow price. Mostly second and third calves. If you are in the milk diversion program, these cows must go back into a program shipper. We will also trade your cull cows in. Selling out 1 or all. First come, first serve.

Shady Lane Dairy Sales Inc.
Quarryville PA
Phone: Glen-717-786-2750
David-717-786-1725

MELVIN KOLB, INC.

HOLSTEIN COW SALE

LOCATION: At my Maryland Farm, 1/2 mile northwest of Woodsboro, on Route 550, Frederick County.



THURSDAY NIGHT
MAY 17, 1984
7:30 P.M.

150 PUREBREDS & GRADES 150

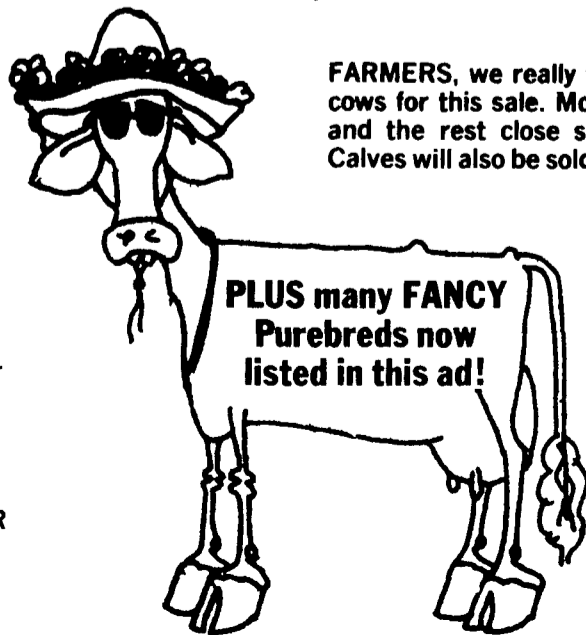
20 Purebred Cows, several with full pedigrees & from the most popular sires;

20 Purebred First Calf Heifers that will suit the most particular buyer;

40 Second & Third Calf Grade Cows from New York, specially selected for this sale; a fine group of cows with some milking up to 100 lbs. per day;

60 First Calf Grade Heifers that show a lot of quality, with fancy udders & plenty of size.

FARMERS, we really tried to select the very best cows for this sale. Most of them will be just fresh and the rest close springers. Several Purebred Calves will also be sold.



PLUS many FANCY Purebreds now listed in this ad!

MELVIN KOLB

Sale Manager
ROBERT C. MULLENDORE

Auctioneer
HENRY KETTERING
Pedigrees



AUCTIONEER'S DIRECTORY

NOTICE

To assure that your Public Sale appears in the Public Sale Section we must have your advertisement by 4 P.M. Tuesday of each week's publication

C.H. WOLGEMUTH
RD #2 MANHEIM PA
AUCTIONEER
Member of

COMPLETE AUCTION SERVICE
CALL 717 665-5664

Are you thinking of selling?
Why not cash in the modern way with an auction.
Here's why -
It's the fastest way to convert any type property into immediate cash.
Auctioneer:
BOB FRAME
AL-000292-L
ROD FRY
AA-001410-L
717-426-2705

KLINE & KREIDER AUCTIONEERS
COMPLETE PROFESSIONAL AUCTION SERVICE
REAL ESTATE — FARMS & RESIDENTIAL
PERSONAL PROPERTY — ANTIQUES —
FARM STOCK SALES - LIQUIDATIONS
RANDAL V. KLINE AUCTIONEER REALTOR
717 733 1006
717 569 8701
LLOYD H. KREIDER AUCTIONEER
717 786 3394

* FREE REFRESHMENTS FOR ALL DAIRY FARMERS!

* DOOR PRIZE: Purebred Heifer Calf — Must be a buyer to be eligible and present to win.

* FREE TRANSPORTATION FOR LANC. CO. AMISH: Please call: 569-2106 or 569-6800 for a ride to the sale.