

BALDWIN ELECTRIC MOTOR DIVISION, INC.

REPAIR & REWIND - ALL BRANDS
AC & DC MOTORS
Call 717-354-5566
Call 717-354-4651

BALDOR ELECTRIC MOTORS

Warehouse and Factory Service

1/2 hp. thru 10 hp. 1 ph.

1/2 hp. thru 100 hp 3 ph.

FARM DUTY MOTORS IN STOCK

P O Box 232 Honey Brook PA 19344



SAWMILLS FOR SALE

Frick model O1C 16 ft. carriage, track, pantograph, timber tiger set works and 4 Montgomery air dogs;

Complete almost new Frick model O1C w/16 ft. carriage, track, husk w/long arbor, belt feed, drive belts and pulleys and 3 air dogs.

Also power units, edgers and other sawmill equipment bought and sold.

A.S. Clark & Sons

RFD Box 131

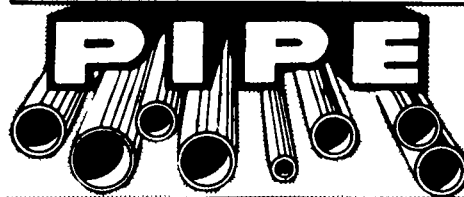
Newfane, VT 05345

802-257-1963 Days

802-365-7661 Nights

H. SCHWARTZ & SONS, INC.

NOW SERVING THE STATE OF DELAWARE DIRECTLY FROM WILMINGTON!



NEW USED and RECONDITIONED PIPE
STANDARD EXTRA & DOUBLE EXTRA HEAVY ALL SCHEDULES ALL TYPES FABRICATION THREADING CUTTING - WELDING

121 SO. MARKET ST. - WILMINGTON 19801
302-656-0276 or 215-DE1-4240

Complete TRACTOR & ENGINE REBUILDING Dynamometer Testing

FOR SALE

A.C. and Wisc 2 and 4 cyl power units with or without clutch reduction

SPRING GARDEN REPAIR SHOP

RD #1 Box 204 Kinzer, Pa 17535 Joe S Stoltzfus

DISCOUNTED DISK HARROWS

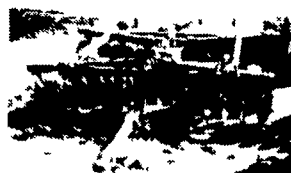


'RP' Offset Disk, 10 ft Wide, 1/4"x22" Blades-Notched. Like New Condition \$3250 \$2950

Rhino 83 Disk Harrow, 14 Ft Cut Blades 18" 20" Dual Transport Wheels \$1575



Used Athens 131 12'11" Cut Disk Approx 20" Diameter Blades (No Lift Cylinder In Price) Rock Lover With Individual Gang Flexibility \$2,960

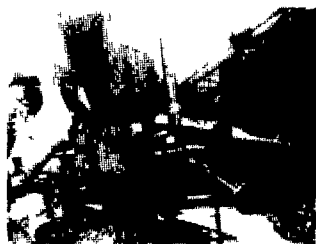


JD 1630 Plowing Disk, 14 Ft Cut 28 Cone Type Blades Adj 4 Angles of Cut, 11" Disk Spacing 2 Transport Cylinders 3 Hangers/Gang \$2850



AC Wing Fold Disk Harrow 19 Ft Cut Blades Measure Approx 20" to 21" Dia \$3,200

MISCELLANEOUS SPECIALS



New Holland Grinder Mixer, Model 352 Auger Unload Extension

Brady 12 Shank Chisel Plow 32" H Clearance Spring Shank w/Curved Shovels 3 Pt Type \$1,580

Duetz 9' Cut Pull Type Drum Mower Reduced from \$1,928 to \$1,675

Noble Field Cultivator, 3 Pt Mounted 15 ft w/Hyd Wing Fold Danish Tines Good Shovels \$850

IH 56 Forage Blower \$1,375

Gehl CB 1200 Harvester With Hydraulic Spout and Electric Transmission Controls (Header Not Included) Completely Serviced And Field Ready \$6,987

Good Used Gehl Model 99 Forage Blower Equipped With 1000 RPM Gear Box (Can Be Changed To 540 PTO) Must See To Appreciate \$1,795

Fuerst 12 Foot Drag Type Harrow \$489

Vicon Disk Mower Conditioner Pull Type 7'8" Cut In Good Condition \$4,670

Sprayrite Sprayer, 200 Gal 3 Pt Like New \$435

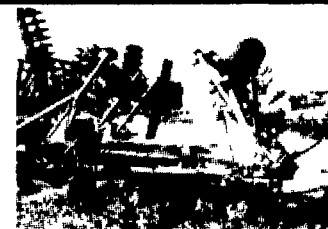
MF Loader w/Sub Frame Mounting For MF 265 Tractor Or Similar Models w/Trip Dump & Front Mount Hi Capacity Hydraulic Dump Kit Like New Only \$850

Used 12 Hole Grain Drill, Approx 7 1/2 Foot Width Pull Type w/Large Steel Wheels Has Seed Compartment & Legume In Good Condition (Fertilizer Box Poor) Disk Opener About 12 1/2" Dia Only \$256 Or Pickup Here For Only \$195

IH "401" Spring Harrow, Nice \$550

MF 4 Bottom Plow, Spring Trip \$450

Mohawk 5 Tooth Chisel New Shovels \$650



Brady Field Cultivator 25 Foot Wing Model With Hydraulic Fold Cylinder & Hoses (No Lift Cylinder) \$3,145 Now Reduced To Only \$2,985

Kverneland Plow, 3 Pt 4 Bottom 16 Moldboard Plow w/3 Coulters, Spring Trip (Not Automatic Reset) Weathered But Used Very Little \$485

PARTS DEPT. SPECIALS

BEST IN THE FIELD
SPRING BREAK
\$25 SAVINGS ON
CASE FILTERS

WITH CASE LUBRICANT PURCHASE
Get a buck a gallon Case Ag filter credit for every gallon (4 liters) of Case lubricant you purchase. (Limit \$25 per customer invoice.)



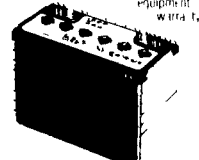
BEST IN THE FIELD
SPRING BREAK
SAVE UP TO \$20
ON CASE BATTERIES

Save \$10 on any \$50 Case battery
Save \$15 on any \$100 Case battery
Save \$20 on any \$150 Case battery

A 38411 - Group 30H Battery

- 70 Amps
- 10, 15, 20, 30, 40, 50, 60, 70, 80, 90, 100, 110, 120, 130, 140, 150, 160, 170, 180, 190, 200, 210, 220, 230, 240, 250, 260, 270, 280, 290, 300, 310, 320, 330, 340, 350, 360, 370, 380, 390, 400, 410, 420, 430, 440, 450, 460, 470, 480, 490, 500, 510, 520, 530, 540, 550, 560, 570, 580, 590, 600, 610, 620, 630, 640, 650, 660, 670, 680, 690, 700, 710, 720, 730, 740, 750, 760, 770, 780, 790, 800, 810, 820, 830, 840, 850, 860, 870, 880, 890, 900, 910, 920, 930, 940, 950, 960, 970, 980, 990, 1000

Reg. \$79.99
SAVE \$10.00
PAY ONLY
\$69.99



GOOD THROUGH JUNE 30, 1984

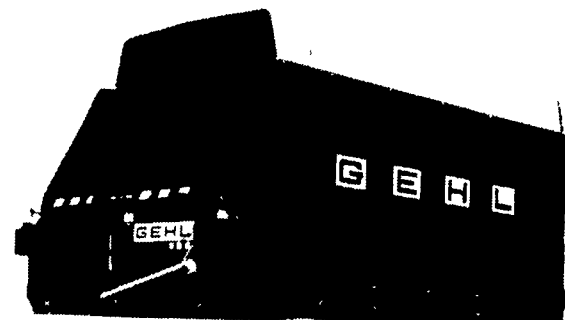
SPECIALS ON GOOD, USED FORAGE EQUIPMENT

- Gehl Forage Box, 4x16, 2 Beater, No Roof, 8 T. Gear \$650
- Case 555 Haybine, 9' Cut, It Works \$775
- Gehl 99 Blower, New Wrapper Band, 540 P.T.O., Real Good \$1,580
- AC Forage Blower, Good Condition, Fine Unit For Smaller Operation \$400
- IH 56 Blower, 56" Fan, Good Condition, 540 PTO \$1,395
- Gehl 99 Blower, Used Little, 1000 PTO \$1,795

20% OFF GEHL...THE LEADER IN FORGE BOXES

In Stock (Less Running Gears)

NOTICE! TAKE 20% OFF

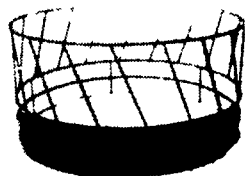


Special Serial Numbered New Forage Boxes In Stock Shown In This Ad Only

- New Gehl 960 Wood 6'x14' Box With 3 Beaters and Roof, Steel Aprons Web. Serial #32368
FACTORY PRICE W/FREIGHT & SETUP..... \$5657⁹¹
- New Gehl 640 Wood Box 6'x14' With Roof With 3 Beaters, Rubber Trough Unloading Extension, Continuous Drive, Serial # 3434
FACTORY PRICE W/FREIGHT & SETUP..... \$4609¹⁶
- New Gehl 640 Wood Box 6'x16' Long With Roof, Rubber Trough Unloading Extension, 3 Beaters, Continuous Drive Serial #3518
FACTORY PRICE W/FREIGHT & SETUP..... \$4843¹⁵
- New Gehl Model 640 Wood Box 4'x16' 2 Beaters, No Roof, With Rubber Trough, Unloading Extension, Serial #3439
FACTORY PRICE W/FREIGHT & SETUP..... \$4041⁴⁶
- New Gehl Model 640 Wood Box 4'x14', 2 Beaters (No Roof) With Rubber Trough Unloading Extension Serial #3423
FACTORY PRICE W/FREIGHT & SETUP..... \$3848⁰⁰

NOW IS THE TIME TO SAVE BIG!!
Remember... 20% Off

SPECIAL OFFER ROUND BALE FEEDERS WITH LOWER FEED SAVER PANEL



8" Dia. x 42" High w/15" Feed Saver Panel

Round Feeders are rugged constructed to give years of feed saving service. Each feeder makes it possible to feed nearly 100% of your big bales to over 20 head of full grown cows. The nearly 100% Utilization of feed can more than double you feed dollars.

SALE PRICE ONLY \$98.50 w/Short 4" Extension Legs To Keep Unit Above Mud

BINKLEY & HURST BROS., INC.

133 Rothsville Station Rd., Lititz, PA 17543
Located 1/2 Mile North of Rothsville

PH: 717-626-4705

Hours: Mon.-Fri. 7 A.M. - 5 P.M.;

Sat. 7 A.M. - 11:30 A.M. Sun. Closed - Lord's Day