



# Livestock market and auction news

## Virginia Auction Summary

Apr. 29 - May 2  
Report supplied by VDA  
Total of Va. Weekly Feeder Cattle Auction Receipts: 6,282.  
TREND: Steers & heifers in Va. auctions were uneven from \$4 higher to \$3 lower.

### Southwestern, Va. Auction Summary

Apr. 29 - May 2  
STEERS: 300-500 lbs. Medium 1 55.00-69.50; Large 1 60.00-71.50; Small 1 49.00-62.00. 500-700 lbs. Medium 1 53.25-68.50; Large 1 56.00-71.00; Small 1 48.00-60.00. 700-1000 lbs. Medium 1 50.00-59.00;

Large 1 52.00-60.00.  
HEIFERS: 300-500 lbs. Medium 1 40.00-54.00; Large 1 42.00-55.00; Small 1 38.75-47.00. 500-700 lbs. Medium 1 40.00-54.50; Large 1 43.00-54.00; Small 1 39.50-44.75. 700-900 lbs. Medium 1 42.00-50.00; Large 1 46.00-53.00.

### Northern Va. Auction Summary

Apr. 9 - May 2  
STEERS: 300-500 lbs. Medium 1 55.00-69.50; Large 1 60.00-71.50; Small 1 49.00-62.00. 500-700 lbs. Medium 1 53.25-68.50; Large 1 56.00-71.00; Small 1 48.00-60.00. 700-1000 lbs. Medium 1 50.00-59.00; Large 1 52.00-60.00.  
HEIFERS: 300-500 lbs. Medium

1 40.00-54.00; Large 1 46.00-55.00; Small 1 38.75-47.00. 500-700 lbs. Medium 1 40.00-54.50; Large 1 43.00-54.00; Small 1 39.50-44.75. 700-900 lbs. Medium 1 42.00-50.00; Large 1 46.00-53.00.

### Southeast Va. Auction Summary

Apr. 9 - May 2  
STEERS: 300-500 lbs. Medium 1 59.50-63.00; Small 1 54.75. 500-700 lbs. Medium 1 51.50-57.00.  
HEIFERS: 300-500 lbs. Medium 1 47.00-53.00; Large 1 47.00; Small 1 45.49. 500-700 lbs. Medium 1 45.00-47.50.

## Shenandoah Valley Livestock

Harrisonburg, Va. Saturday, April 28

Report supplied by auction

FEEDER CATTLE: Trend-Feeder Steers 3.00 lower; Feeder Bulls 5.00 lower; Feeder Heifers 1.00 lower. Steers: M&L-1 300-500 lbs. 56.00-65.00; 500-700 lbs. 54.00-60.75; 700-1000 lbs. 53.00-57.00; Holstein 300-1000 38.00-49.00. S-1&M&L-2 300-500 lbs. 57.00-59.00; 500-700 lbs. 53.00-58.50; 700-1000 lbs. 47.00-52.00.

FEEDER BULLS: M&L-1 300-500 lbs. 53.00-57.00; 500-700 lbs. 46.00-53.50; 700-1000 lbs. 44.00-48.00. S-1&M&L-2 300-500 lbs. 44.00-53.00; 500-700 lbs. 40.00-48.00.

HEIFERS: M&L-1 300-500 lbs. 43.00-51.00; 500-700 lbs. 42.50-51.00; 700-800 lbs. 42.50-46.00. S-1&M&L-2 300-500 lbs. 42.00-47.00; 500-700 lbs. 38.00-42.00.

STOCK COWS: Beef 325.00-410.00. Baby Calves 30.00-108.00, mostly 40.00-70.00.

SLAUGHTER COWS: Trend-1.00 lower. Utility & Commercial 2-4 36.00-43.75; Canner & Cutters 1-3 28.00-36.75.

SLAUGHTER BULLS: 1&2 43.00-49.50.

LAMBS: Trend-1.00 lower. High Choice & Prime 67.00; Whole Lambs 61.50; Choice 64.00; Slaughter Ewes 11.00-12.00; Head Ewes & Lambs 35.00-40.00 head.

HOGS: US 1-3 200-240 lbs. 46.50; Sows 1-3 42.00-49.50; Boars 31.75.

46.75; Utility 41.00-45.00; Canners 38.00-42.00; Shelly 38.00 down. Bulls- High Yield Limosine 1835 lbs. 64.00; Good to Med./Good 48.00-49.25. Fed Steers- Good run. High Choice 64.50-67.00; Low Choice 61.00-64.00; Good 55.00-61.00. Fed Heifers- High Choice to 65.00; Low Choice 57.00-59.00; Good 52.00-57.00. Veal Calves- Good demand, all classes. Choice 82.00-90.00; Good 70.00-82.00; Standard 50.00-70.00; Killers 80-100 lbs. 49.00-59.00; Weak/Rough 35.00-down. Farm Calves- Holstein Heifers 90-110 lbs. 60.00-74.00; Holstein Bulls 100-120 lbs. 85.00-105.00; 90-100 lbs. 70.00-95.00; Beef Type 80-120 lbs. 60.00-80.00. Hogs- \$2.00 under last week. US #1&2 215-240 lbs. 46.50; US #1&3 215-240 lbs. 45.00-45.85; US #2&3 237 lbs. 43.00. Sows- 500-650 lbs. 47.50; 400-500 lbs. 41.50-43.50.

STOCKER CATTLE: 125 head, demand weaker. Steers- 300-700 lbs. 53.00-60.00; 850-1000 lbs. 56.00-59.00; Good Holsteins 400-950 lbs. 45.00-48.25. Heifers- 300-500 lbs. mainly 41.00-48.00; few to 51.00; 500-900 lbs. 38.00-45.00. Bulls- 300-500 lbs. Good 50.00-58.50; Medium 43.00-48.00. Pigs and Shoats- 135 head. By the Head: 15-30 lbs. 16.00-26.00; 30-75 lbs. 29.00-45.00. By the Lb.: 14 head 86 lbs. at 73.00; 2 lots 100-110 lbs. 44.50-50.00. Stock Boars- 150-225 lbs. 34.00-38.00. Goats- By the Head 15.00-31.00; Kids 12.00-21.00. Spring Lambs- 1 lot. 65 lbs. 56.50. Sheep 14.00-15.00. Hay Sale Results- 15 loads. Alfalfa 133.00-157.50; Timothy 93.00-120.00; Mix 80.00-120.00, Per Bale 1.70; Straw 72.50-75.00, Per Bale 1.30.

## LOUIS LYONS & SON

Consign your cattle and hogs, feeder pigs & calves to Louis Lyons & Son. They offer choice service, excellent sorting & marketing of your livestock.

Charles Diller, Manager  
Phone 394-7915  
Burnell Siegrist - Buyer & Seller  
Phone 626-8653

Experienced Personnel

Immediate Weighing

## KING'S AUCTION, KIRKWOOD

Hay, Straw and Grain Auction Every EVERY TUESDAY

12:00

Located Rt. 472 5 miles south of Quarryville or 6 miles north of Oxford at Shaub's Auction House.

No out of state checks

ALL TRUCKERS AND FARMERS WELCOME

## Green Dragon

### Livestock Sales

1 Mile North of Ephrata, PA



COWS COWS COWS

### BUYERS FROM 3 STATES

Regular consignments from Bob Kennedy & Ed Stover plus 15 other local consignors. Lots of good Northern Feeders and Stockers.

### SALE EVERY FRIDAY

Bulls, Steers, Slaughter Cows, Lambs and Veal Calves  
11:00 A.M. - Beef Sale Stockers & Feeders 200 to 250 each week.  
12:30 P.M. - Dairy Cows  
7:00 P.M. - Small Animal Sale

For Special Sales and Herd Dispersals on the farm or at our barn or other market information call: Office 717-733-2444.

WALTER H. RISSER, Proprietor

## Westminster Livestock Auction

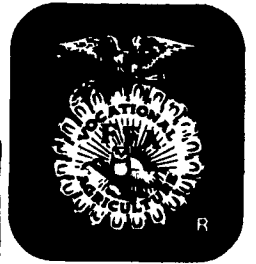
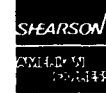
Westminster, Md. Tuesday, April 24

Report supplied by auction  
SLAUGHTER: Cows: Mostly steady to .50 lower. High Yield few

## Seeking Profits In Commodities Trading?

- Hedging
- Speculating
- Managed Account

Call Forney Longenecker, Commodities Investment Executive, At (717) 295-8914  
SHEARSON/AMERICAN EXPRESS, INC.  
29 E. King St. Lancaster, PA 17603



## FEEDER SALE!

TUESDAY MAY 8th 7 PM  
CARLISLE LIVESTOCK MARKET  
Just Off I 81 Exit 12  
Phone (717) 249-4511 or Jim 249-2359

## Boots that Work!

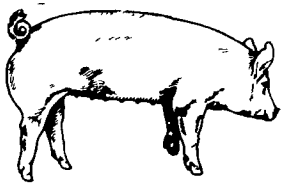


8 full grain oil tanned Anti-slip cork sole and heel SIZES 6-15 A-EEEE

947 Not all sizes in all widths These boots were made for walkin And workin And comfort And lasting wear You've earned your Wings!

## Red Wings

BOOKS SHOE SERVICE  
107 E STATE ST  
QUARRYVILLE, PA 17566  
717-786-2795  
CLOSED WEDNESDAYS



## EMERY'S BUYING STATION

NOTICE!  
WE WILL BE CLOSED TUESDAY, MAY 8th DUE TO GREEN DRAGON ANNUAL HEIFER SALE

OPEN TO RECEIVE YOUR MARKET HOGS

AT THE GREEN DRAGON MARKET RD 4, EPHRATA, PA 17522 1 MILE NORTH OF EPHRATA ON NORTH STATE STREET.

HOURS: MONDAY, TUESDAY, and WEDNESDAY 6:00 A.M. to 11:30 A.M.  
215-458-5677 Residence  
717-733-9648 Office

YOU ARE PAID FOR YOUR HOGS IMMEDIATELY

Ken & Lois Emery, Proprietors



## ATTENTION FARMERS

EVERY MONDAY  
HATFIELD PACKING CO. and MOYER PACKING CO.  
Will Receive Your Hogs and Cattle at the

DANVILLE LIVESTOCK MARKET RD4, Danville, PA

- We will receive your hogs from 8 AM to 12 Noon every Monday. Your hogs will be weighed and paid for immediately.
- We will also accept your sows & boars.
- Your cattle will be received from 12:30 to 5 P.M. We will either pay you for your cattle immediately or you may sell them dressed weight.
- There will not be a commission or yardage fee deducted from your check.
- You may call our office Monday morning and we will be able to tell you the base price for hogs for the day.

MELVIN M. LEHMAN - Owner  
Danville Buying Station  
Phone: 717-275-2880

## VINTAGE SALES STABLES, INC. AUCTIONS

Every Thursday at 1 P.M. HAY, STRAW & GRAIN

Sold on Commission  
10 miles east of Lancaster, 8 miles west of Coatesville on Rt. 30, Paradise, PA.

L. Robert Frame, Manager  
For information 717-442-4181 215-458-8518

## SPECIAL FEEDER CATTLE AUCTION

Friday Night The 11th At 7 P.M.

300 to 400 head steers and heifers all breeds and weights.

VINTAGE SALES STABLES, INC. 10 miles East of Lancaster on Rt. US 30, Paradise, Pa.

L. Robert Frame, Manager  
717-768-8204 or Home Phone 215-458-5060