



The Bluegrass Cardinals, a group from Virginia, will perform at the Guernsey Barn on May 12.

Bluegrass Cardinals to perform

LANCASTER — The Bluegrass Cardinals will appear at the Guernsey Barn for the first time on Saturday, May 12 along with the Lewis Family.

The Bluegrass Cardinals originated in early 1974 when Kentucky native Don Parmley organized the group in Los Angeles, along with son David, who was then 15.

At that time Don was working on the set of the long-running "Beverly Hillbillies" CBS-TV series. He played the background banjo music during the last nine years of the show's filming. In 1976 the group decided to move their base to Virginia, closer to the greater potential bookings in the eastern states.

Soon after the move from the west coast, the group was honored with the opportunity to give a concert at the White House for the president and his guests.

The group's roots go back to a Saturday night in 1945 when Bill Monroe, Lester Flatt and Earl Scruggs got together for the first time in Nashville's Ryman Auditorium to combine their talents and for the nucleus of the first band to perform bluegrass music.

During the following decade, a half dozen or more groups followed their lead to gain national recognition. Although Lester Flatt died in 1979, the majority of those "pioneer" artists remain active after more than 30 years in the business.



WHEN THE JOB DEMANDS DUALS, DEMAND M & W ECONOMY T-RAIL DUALS

- 18.4x34..... List \$594.00 . Now **'475.00**
- 20.8x38..... List \$792.00 . Now **'630.00**
- 18.4x38..... List \$630.00 . Now **'505.00**

USED DUALS IN STOCK!
We Buy & Sell Used Duals!

★ Other New Sizes Available At Similar Discounts ★

We Are Truckload Dual Wheel Buyers - We Sell At Dealer Prices

MUMMAU'S TIRE

Mt. Joy, Pa. 717-653-1260
PA. TOLL FREE — 1-800-222-1729

75th Anniversary
1909-1984



BIG SALE

May 8 to 12

Free Eating Samples.
BARGAINS IN
ALL DEPTS.

Coke Wagon
Check our complete ad
in the May 8th
Pennysaver.

Dept. Store &
Hardware

LP-Gas Service

We invite folks at a
distance to stop and pay
us a visit when they are
in Lancaster County

W.L. Zimmerman
& Sons

Lancaster County
Intercourse, PA

Phone
717-768-8291

RADIALS

\$100.00

Cash Rebate

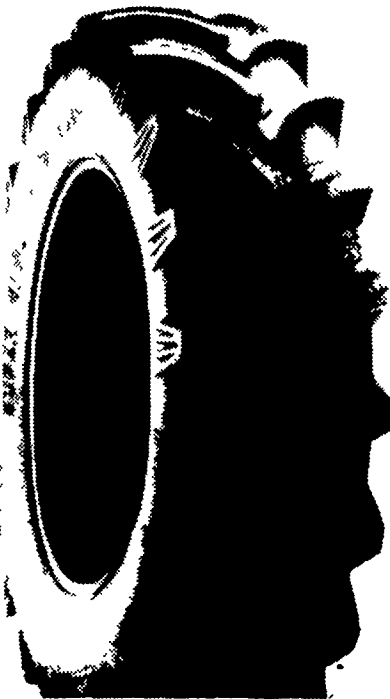
ARMSTRONG

'100 CASH REBATE

- With every purchase of a set (2) of Super Hi-Power Lug Radials, Armstrong will send you a \$100.00 cash rebate
- In addition, get all the benefits available from Armstrong's Super Radial tractive capability, durability, roadability, ride & handling and total performance

ARMSTRONG SUPER HI-POWER LUG RADIAL

- 18.4x34, 6 Ply **'419**
- 18.4x38, 6 Ply **'459**
- 18.4x38, 8 Ply **'525**
- 20.8x38, 8 Ply **'650**
- 20.8x38, 10 Ply **'725**



BACKHOE TIRES



- 14 9x24, 8 ply **'215.00**
- 16 9x24, 8 ply .. **'230.00**
- 17 5Lx24, 8 ply . **'240.00**
- 16.9x28, 8 ply .. **'260.00**
- 18 4x28, 10 ply . **'350.00**

LOADER TIRES

• We Ship UPS

- 700-15, 6 ply . **'65.00**
- 750-15, 6 ply .. **'68.00**
- 10-16 5, 6 ply . **'80.00**
- 12-16.5, 8 ply **'115.00**



WAGON TIRES



- 9 5Lx15 8 Ply **'44.00**
- 11Lx15 8 Ply **'85.00**
- 12 5Lx15 10 Ply **'160.00**
- 12 5Lx15 10 Ply **'74.00**

Special!

**'5.00 DISCOUNT
This Month!**

FRONTS



WE SHIP
UPS

- 400-12 **'22.00**
- 400-15 **'24.00**
- 500-15 **'31.00**
- 550-16, 4 ply **'33.00**
- 550-16, 6 ply **'36.00**
- 600-16, 4 ply **'37.00**
- 600-16, 6 ply **'41.00**
- 650-16, 6 ply **'42.00**
- 75L-15, 6 ply **'50.00**
- 750-16, 6 ply **'50.00**
- 750-16, 8 ply **'54.00**
- 750-18, 6 ply **'64.00**
- 9.5L-15, 6 ply **'55.00**
- 9 5L-15, 8 ply **'60.00**
- 1000-16, 6 ply **'80.00**
- 11Lx15, 8 ply **'75.00**
- 1100-16, 8 ply **'110.00**
- 14L-16.1, 8 ply **'160.00**

* We Install Within 100
Miles Of Lancaster
& Harrisburg

Monthly
Deliveries
Available in NJ!

Delivery & Installation Each Week In
• Sunbury • Williamsport • Lewistown
• Center Hall • State College
• Reading • Allentown • Pottstown

TRACTOR TIRES

ARMSTRONG

WE GO THE EXTRA MILE

MUST SELL FOR CASH

- 9.5x24, 4 ply..... **'82.00**
- 11.2x24, 4 ply..... **'95.00**
- 11.2x28, 4 ply..... **'113.00**
- 11.2x38..... **'140.00**
- 11 2x36 **'135.00**
- 12 4x24 **'120.00**
- 12 4x28, 4 ply **'125.00**
- 12 4x38 **'165.00**
- 13 6x28, 6 ply **'155.00**
- 13.6x38, 6 ply . **'191.15**
- 13 9x36, 6 ply **'185.00**
- 14 9x26, 6 ply **'170.00**
- 14 9x28, 4 ply **'158.00**
- 14 9x38, 6 ply **'224.00**
- 15.5x38, 6 ply **'220.72**
- 16.9x34, 6 ply . **'250.00**
- 16.9x38, 6 ply **'275.00**
- 18.4x38, 8 ply **'364.12**
- 20 8x38, 8 ply .. **'495.00**
- 20.8x34, 6 ply **'450.00**
- 18 4x34, 6 ply . **'289.00**
- 18 4x34 8 ply **'325.00**
- 16.9x30, 6 ply **'224.00**
- 18 4x30, 6 ply **'262.00**
- 14 9x28, 6 ply **'173.00**
- 13.6x28, 4 ply **'140.00**
- 16.9x28, 6 ply **'220.00**
- 24 5x32, 10 ply **'700.00**
- 23 1x34, 8 ply **'660.00**

★ Above tires are original equipment
type. Federal Tax is included in
above price

IF YOUR SIZE IS NOT LISTED
CALL US FOR SPECIAL PRICE!

MUMMAU'S TIRE

Mt. Joy, Pa. 717-653-2075
PA. TOLL FREE — 1-800-222-1729