

**Public Auction Register**

Closing Date Monday 5 00 P M of each week s publication

SAT MAY 5 Public Auction for Delaware Con tractors Association Located at Brandywine, Delaware Vilsmeier Auc tion Co. Auctioneers

SAT MAY 5 9 AM Public Auction of Antiques, Col lectibles, Household, Guns, & Farm Equipment Located 8 miles west of Selinsgrove PA on Rt 522 Make right, turn off Rt 522 just west of Kreamer, between Keister's Middleburg Auc tion and the former Big T Restaurant and go 8/10 mile to village of Globe Mills Then make right turn onto W Hollow Rd and go 1/4 mile to sale site Mr & Mrs Richard A Krohn, Owners Dale L Longacre, Auctioneer

SAT MAY 5 & SAT MAY 12 10 AM Public Auction of a Fine Brick Ranch Home, Fine Antiques, Household Goods, Riding Mower & Tools Located at 127 N Duke St, Boro of Millersville, Manor Twp, Lanc Co PA Take Rt 999 just west of Millersville to N Duke St Turn left to sale Burrell Crozier Estate Howard Shaub & Roy C Probst, Auctioneers

SAT MAY 5 10 30 AM Public Auction of Interna tional 484 with Front End Loader, MF 65, 1972 Ford Pickup, Woods Rotary Mower, JD Rotary Mower, Gravelly 812 Riding Mower, Tools, Horse Tack, Horse Hot Walker, Feed, Hay & Straw Located on Monkton Manor Rd and Carroll Rd, Monkton, MD Westfield Limited Owner Dance Auctioneers Co Inc

SAT MAY 5 10 30 AM Public Sale of Drumore Township farm and per sonal property Located on the premises on Scenic Trail Road, near Chestnut Level Lancaster Co William C Ressler and Helen M Ressler, Owners Kersey A Bradley, Auctioneer

SAT MAY 5 9 30 AM Public Auction of Real Estate Farm Equip & Misc Located 1509 Mum ma Rd, West Hanover Twp Dauphin County Howard Geyer Sr & Jr Owner Richard P McNeal, Auctioneer

SAT MAY 5 10 AM Public Auction of a New Inventory Reduction, Petersheim's Store Located in Lanc Co, PA 6 miles southeast of Strasburg at the intersec tion of White Oak Rd and Old Dam Rd From Rt 896 go east on White Oak Rd Melvin & Rebecca Petersheim Owners Steve Petersheim, Auc tioneer

SAT MAY 5 10 30 AM Public Auction of Machinery Equipment Dairy Equipment Misc Cattle both Dairy Heifers & Beef Cattle Located on the Basford farm 12 miles from Frederick on Basford Rd just off Rt 15 south between Rt 340 and Point of Rocks From Frederick take Rt 340 to Rt 15 south on Rt 15 to Basford Rd 4 miles from Point of Rocks in Frederick Co, MD Equip ment Owner, Raymond Basford Cattle Owner Dick Shankle Reinsburg Sale Service, Auctioneers

SAT MAY 5 12 00 Noon Farm Machinery Auction Located at the intersec tion of Rts 106 and 92, 1/2 mile off the Lenox Exit of I-81 Just behind the County National Bank Building Watch for ar rows Igg and Rita Lesin ski, Owners Bill Mead, Auctioneer

SAT MAY 5 9 30 AM Public Auction of the 13th Annual Mt Zion Church of the Brethren Consign ment Sale Located on Mt Zion Rd, Fredericksburg Fireman's Park (Lebano Co) Rt 343 south of Fredericksburg, PA H Bachman, R Myers, R

Hoke J Hoke, M Fortna A Locke, R Ebersold, D Rudy Local Auctioneers

SAT MAY 5 10 AM Public Auction of Hall Caddy, Oak Pcs, Anti ques, Household Located at the New Mahoning Fire Hall, 6 miles west of Leighton, off Rt 443 Myrtle McDaniel Estate Mr & Mrs Robert Deibert, Executors Curt, Doug, & Tim Houser, Auc tioneers

SAT MAY 5 12 30 PM Public Auction of the Gretstone Farms Com plete Dispersal Sale of 35 Cows, 15 Bred Heifers 15 Open Heifers and Calves & 1 Bull Located at the Cortland Sales Pavilion on Rt 41 just off I-81 Exit 10 toward McGraw Cor tland, NY L S Riford, Jr, Owner The Merryman Co Auctioneers

SAT MAY 5 10 15 AM Public Auction of Farm Equipment 3 Tractors Ford Pickup Cars, Tools, Farm Hardware, Antiques & Furnishings Located at 910 Waltz Rd, West Brad ford Twp, Chester Co, PA Take southeast Down ingtown or northwest of West Chester on Rt 322 to Sugars Bridge Go 1/2 mile SW on Waltz Rd 1st farm on right Marshall D Waltz, Owner George H Wilson & Son Auc tioneers

SAT MAY 5 1 PM Public Auction of Cattle and Machinery Located in East Rush, PA between Rush (Rt 706) and Dimock (Rt 29), 10 miles from Montrose, Sus quehanna Co Ray Hollister Owner Jim Adriance Auctioneer

SAT MAY 5 10 AM Public Auction of Household Items, Anti ques and some Old Farm Machinery Located 7 miles west of Lawrenceville, PA on Rt 49 and 2 1/2 miles east of Elkland PA Rt 49 Watch for signs Frank Antonio,

Owner Ron Mase Auc tioneer

MON MAY 7 5 PM Public Sale of tractor tools and plumbing sup plies Located at 238 Acorn Lane Elizabeth Township, Lanc Co, PA Rt 322 west of Bricker ville, turn south onto Long Lane Proceed to Acorn Lane Margaret Highland, Owner T Glenn Horst and Timothy G Horst, Auctioneers

MON MAY 7 12 Noon Public Auction of modern farm equipment, trucks, grain bins and dryer Located 11 miles east of Easton, turn off Rt 22 at Asbury and Warren Glenn exit turn north along the river toward Asbury, two miles turn right onto Wolverton Rd to 1st farm across the river Asbury, New Jersey Rural Farm Enterprises, Owner Ralph W Zettlemoyer Auction Co, Inc, Auc tioneers

MON MAY 7 11 AM Public Auction of Modern Dairy Farm of 135 575 Acres Located in Elec

Dist #3 Forest Hill Harf Co MD From US Rt 1 take Jarrettsville Rd west 2 miles to intersection of Rt 24 & Jarrettsville Rd in Forest Hill Proceed north on Rt 24, 1/2 mile to farm entrance, 2445 Rock Spring Rd From Bel Air, MD take Rt 24 north to Forest Hill and proceed as above Craige L & Pamela J Tarbert Owners Aber

deen Sales Co, Inc, Auc tioneers

TUES MAY 8 6 30 PM Public Auction of a Com plete Dispersal of Cattle and Machinery Located in Byron, NY 7 miles east of Batavia, 6 miles west of exit 47 NYS Thruway 5 miles southeast of Byron, 1/2 mile north of Rt 33 at 7620 Ivison Rd Herbert

E Broadbooks, Owner William Kent Inc Auc tioneers

TUES MAY 8 5 PM Public Auction of the An nual Consignment Heifer Sale 300 400 Heifers Located at Green Dragon Livestock Sales, 1 mile north of Ephrata, PA Walter Risser, Proprietor

**OUTSTANDING PUBLIC AUCTION**

**—MUSEUM QUALITY ITEMS— ANTIQUES, PRIMITIVES, TOOLS, COLLECTIBLES, AND FURNITURE SATURDAY, MAY 26, 1984**

at 9:00 A.M.

**LOCATION:** 1050 Eden Road, Lanc., Pa. Take Rt. 30 to Rt. 272, (Oregon Pike) Exit North to first traffic light. Turn right on Eden Road. Go 1 mile to AUCTION. Watch for AUCTION signs.

**ANTIQUES - COLLECT.**

Ten plate and Potbelly stoves, Cast Iron seats, Gypsy and copper kettles, Trammels, Baker's peel, YARNWINDER, TAPE LOOM, CHEESE PRESS, Lard press, Meatslicer; Schnitzelbank, M.G. YOUNG FORK, Dated CONESTOGA WAGON JACKS, Carriage Lamps, Wooden: rakes, wheelbarrow; butter bowls, barrels, egg crates, pulleys, vises; Milking stools, wagon seat, baskets, Lanterns, Double Crip Cider Press, Tin candle mold, Planter's Peanut Jar, Brunswick Hotel sign, SADDLER'S BENCH, WOODEN EXPRESS WAGONS, One row: corn planters, cultivators, seeders, shovel plows, LARGE BLACKSMITH BELLOWS, Enameled Eshelman Red Rose Feed Sign, Metal rocking horse. CAST IRON HUBLEY CAT, WALKING WHEEL, Safe, Corn sheller, Flax comb, Agate coffee pot, School desks, Hay cutters, Boring machine, Bag wagons, Traps, Single & double trees, Grain cradles, Hobbles, Ladles, Wedges, Potato dicer, Shafts; Ice Saws, Bobsled, Cow bells, Railroad baggage wagon, Blue decorated Cowden & Wilcox & other Crocks, CONESTOGA WAGON SADDLE, Mountville grinders, Sizing boxes, BRASS KETTLE, Wagon gears, Tire bender, One horse sled, Messinger threshing mach., Case mower, Misc. wagon wheels, Conestoga Wagon tool box, CUTTER SLEIGH, Blacksmith's desk, SADDLERS BENCH, Sulkey plow, Grain cleaner, Drop bottom wagon, Misc. pine, & poplar lumber.

**TO BE SOLD STARTING AT 11:00 A.M.**

NEW HOLLAND 5 H.P. ENGINE - EXCEL. COND., Percussion Cap fowling gun, 44 cal. Winchester and 31 Cal. Colt pistols circa 1800's: "ANNALS OF CONESTOGA VALLEY" by Mast & Simpson, NEW HOLLAND PLATE MILL, ELEVATOR AND BATTERY BOX.

**TOOLS**

BROOM MAKING MACHINE; Post hole saws, Work bench, Turning saw, Levels, Augers, Anvil, Stone cutting hammers, Knippers, SWEDGE BLOCKS, Wooden clamps, Forge, Adz's, Froes, Dummelstock, 2 wooden treddle lathes, Mortise and Tennen machines, Butchering equip.: hog scrapers; Goosewing axes: misc. sizes & shapes; Straw cutters, Yokes, Wheel lock chains, Wooden molding planes, Milling equip., Millstone crane, Tin Smithing equip., Cast iron troughs, Blk. smith's vise, Peg harrows. Some tools are signed.

**FURNITURE**

Jelly Cupboard, Blanket Chest, Primitive BUCKET BENCH, Cabinet makers Chest, Early Grained Cupboard, Hoosier Kitchen Cabinet, Oak Pressback high chair, & Side chairs; Cane seat Rocker, Ropebed, Nice Cookstoves, Oak: table, Tall Chest of Drawers, Mission Rocker, Arm & Side Chairs, Empire Sideboard, Rowfront Dresser. Mahog: Library Tables, Vanity, Smoking Stands, Dining Room Suite. Waterfall Chest of Drawers & Dresser; Beds, Appliances, Trunk, Japan Chocolate Set, Lamps, Misc., Glassware and China.

Please Note: Come Early. Inspection at 7:00 A.M. Many good items will be sold first. This is a collection acquired over many years, and from 6 generations living on the same property.

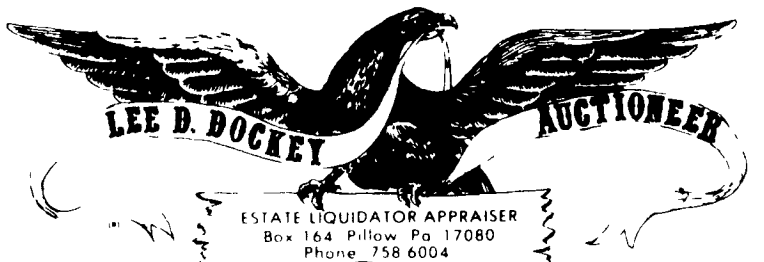
This AUCTION has a large selection of Antiques, Primitives, Tools, and Collectibles. MANY ITEMS NOT LISTED!

TERMS: Cash, Certified check, or Established Customer Checks.

Sale by: **ARTHUR L. & MARIAN G. REIST**

**Alfred G. Reist, Auctioneer**  
717-569-2079  
Lanc., Pa.  
AU-001637-L

*E. M. Murry Associates*  
287 Lime Rock Road  
Lititz, PA 17543  
Elmer Murry 626 5244 626 2636  
Richard Murry 626 8175 949 2280  
Ken Miller 665 2073  
Professional Auctioneers  
Appraisers and Advisors  
Since 1953



**PUBLIC SALE**  
**MONDAY, MAY 28, 1984**  
**AT 1:00 P.M.**

ADAM C. PRENZEL ESTATE

LOCATED AT 16 NORTH THIRD STREET • HALIFAX, PENNSYLVANIA

**REAL ESTATE**



**2 1/2-STORY VICTORIAN HOME** FIRST FLOOR CONSISTS OF KITCHEN LARGE DOUBLE LIVING ROOM AND DINING ROOM SECOND FLOOR CONSISTS OF 3 BEDROOMS BATH AND LARGE HALL WITH OPEN STAIRWAY WINDOWS HAVE EXTERIOR SHUTTERS GAZEBO ON END OF PORCH 1 CAR GARAGE ON REAR OF LOT LOT SIZE HAVING A FRONTAGE OF 70 ON NORTH THIRD STREET AND A DEPTH OF 190 ON STRAWBERRY ALLEY If you're looking for a Victorian home to remodel with an excellent location check into this property. For additional information or inspection phone (717) 758 6004 Real Estate will be offered at 1 00 P M

**ANTIQUES & HOUSEHOLD ITEMS**

(3) Oak Bureau Square Oak Table Kitchen Coal Stove Oak Library Table (2) Cedar Chests Oak Bed Oak Folding Crib Flat Top Trunk Etc.

**THIS IS A SHORT SALE, BE ON TIME!**

**TERMS REAL ESTATE - 10% DOWN FURTHER TERMS AND CONDITIONS TO BE GIVEN DAY OF SALE PERSONAL PROPERTY - CASH PERSONAL CHECKS ACCEPTED ONLY FROM PERSONS HAVING AN ESTABLISHED ACCOUNT WITH AUCTIONEER OR APPROVAL PRIOR TO DAY OF SALE**

AUCTIONEERS

DOCKEY \*AU-000229-L  
DOCKEY \*AU-001683-L  
DEPPEN \*AU-001957-L



ALLEN H SHAFFER, ATTORNEY

Short Notice

**PUBLIC SALE**

Short Notice

**OF MIX MILL, GRAIN BIN FARM EQUIPMENT, SPRAYER TRUCKS TUESDAY, MAY 15, 1984**

11:00 A.M.

Located along Rt. 419, 2 miles south of Interstate 78. 9 miles north of Womelsdorf, Tulpehocken Twp., Berks Co., Pa.

40 ton Mix Mill, two years old  
7500 Bu. Grain Bin with chill cure drying  
2-1500 Bu. Behlem corn cribs  
1-1200 Bu. Behlem corn crib

**FARM EQUIPMENT**

Case 970 Agri King diesel tractor with cab, good rubber, 3000 Hrs.; Leyland 272 diesel tractor 2150 Hrs. with allied 600 loader; Nuffield 345 diesel tractor; Case 5x16" Hyd. reset plow; Taylor-way 7 tooth chisel plow; Case 4x16" trip bottom plow; John Deere 7000 Conservation 4 row corn planter; John Deere 8' and 12' Cultimulchers; Int. 10' transport disc; Cobey tandem spreader with Hyd. engate; Int. 175 spreader; Int. 990 9' Haybine; New Idea 5 wheel rake, like new; Case 230 baler with thrower; 2-Bale wagons; M.F. 22 disc grain drill; Oliver superior 17 disc drill; Speed King 41' corn and bale elevator; 6"x51' Hutchinson P.T.O. tube auger; 4"x20" tube auger with motor; Hi-Cap 40 Grain cleaner with auger and motor; Ford 3 pt. 2 row cultivator; 8' Plow packer; 12' Drag; 3 pt. Saw buck; General 5 ton tandem trailer; 300 Gal. fuel tank; 7' 3 pt. blade; Potatoe plow; Pony cart; Hyd. cylinder; tractor chains.

**SPRAYER TRUCKS AND SUPPLIES**

1968 Int. sprayer with Isuzu diesel engine, 38' Boom, 2-500 gal. tanks; 1964 Int. Sprayer with 40' Boom; 2-1500 gal. Snyder tanks with fittings; 500 gal. tank; 2-330 gal. Stainless steel tanks one with cradle; 1000 gal. nurse tank with steel cradle; Homelite and asm 3" portable pumps with engines; 2" fertilizer suction hoses; Fruehauf 30' trailer for storage; 350 Yamaha street bike 1973 model; 350 cu. in. Chevy motor; Ford 289 cu. in. motor.

**MISC. CHEMICALS**

1964 Ford Pickup with 6' Bed, good condition  
Note: Come early, no small tools.  
Not Responsible for accidents

Sale for **LEVI W. & DORIS E. ZIMMERMAN**  
717-933-4360

Aucts.  
Nevin L. Martin  
Lewis B. Groff