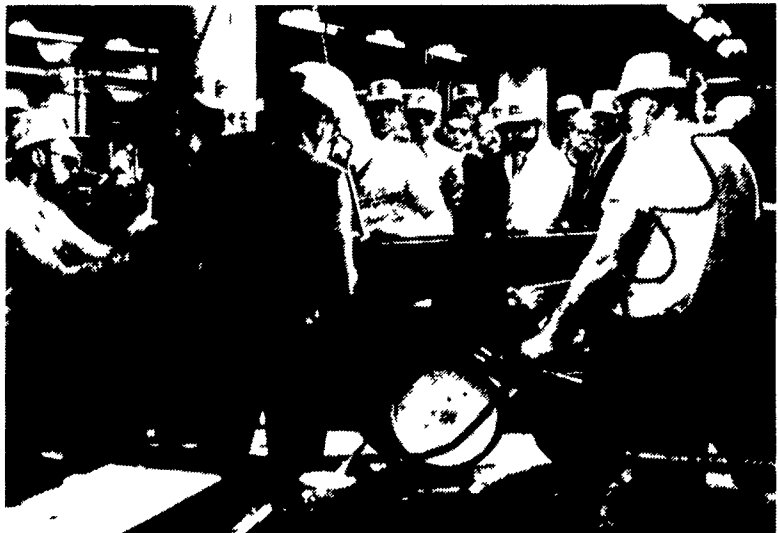




## BUSINESS NEWS...



Workers at the John Deere Plow & Planter Works, Moline, Ill., assemble the one-millionth Max-Emerge Planter row unit as co-workers and factory executives look on.

### One million planters & still going

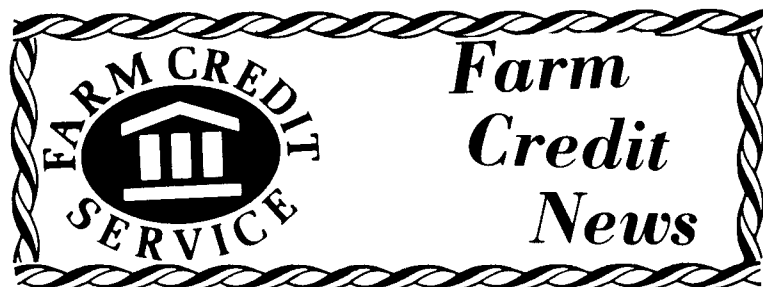
MOLINE, Ill. — The one-millionth Max-Emerge Planter row unit was built at the John Deere Plow & Planter Works, Moline, in early April.

Introduced in 1974 for the 1975 season, the Max-Emerge today is the most popular and widely used planter in the free world. Many competitors have attempted to imitate the concepts embodied in the Max-Emerge design — a design that has revolutionized the ancient ritual of planting seeds.

The Max-Emerge planter's

success and popularity is based on the fundamental of creating the optimum environment for placement of a seed, thus assuring maximum germination and doing so with great consistency. The secret was in the design of the furrow opening and closing mechanisms.

Lined up side by side, one million Max-Emerge rows would spread over 470 miles, long enough to plant the entire state of Iowa and most of Illinois east to west, in a single pass.



### SE Farm Credit to sponsor

#### 5 co-op couples

WEST CHESTER — The Southeast Farm Credit Associations are planning to sponsor five couples to the Pennsylvania Association of Farmer Cooperatives' "Co-op Couples Conference." The two-day conference will be held July 18 and 19 at the Sheraton Danville Inn in Dannville, Montour county.

PAFC is a trade organization devoted to the pursuit of cooperative education in the Commonwealth. It sponsors a number of educational events each year, which are all designed to increase the knowledge of young people in the cooperative way of doing business. The "Co-op Couples Conference" is one such event.

The Conference will be a learning and growing experience for each attendee — two days of becoming knowledgeable about the inner workings of cooperatives. This broadening of cooperative knowledge will provide participants with an opportunity to become more actively involved in their own cooperatives.

It further serves as a chance for young couples to learn how to make their voices heard and to affect change. Participants will develop attitudes and skills necessary to become involved in leadership positions in the farming

community. To quote from the 1984 brochure, "A valued part of the couples conference is the opportunity to fellowship with other farm couples, sharing hopes, dreams, frustrations and goals." PAFC's purpose in the conference is "To improve far income and family life through meaningful involvement..."

Couples are, at the grass roots level, sent to the Conference through the sponsorship of area cooperatives such as Farm Credit. This means that the Southeast Farm Credit Associations will be paying the tuition to the Conference as well as the mileage to and from Danville. Applicants must be 35 years of age or younger and must reside in the five-county Philadelphia area (Bucks, Chester, Delaware, Montgomery or Philadelphia county.)

If you fill these two requirements and care to widen your horizons, contact Carol Mercner at (215) 431-1257 and request an application form. Applications will be taken on a first-come, first-served basis. The Southeast Farm Credit Associations are pleased to be involved in the enhancement of cooperative education realizing that the future of Pennsylvania's number one industry — agriculture — lies in the hands of its young leaders.

## Identical twin bull calves born

MADISON, Wisc. — The first identical twin calves resulting from a joint research project between the University of Wisconsin-Madison and American Breeders Service, were born recently.

The twin bulls were produced from an embryo removed from Ronde Commander Wendy on the farm of her owners, Ron and Marc DeLong, Marionville, Mo. The embryo, along with two others that were developed by mating Wendy with ABS' bull Valiant, were then carried by Dr. Steven Lorton of the ABS Research Staff, on a regular commercial flight to the University of Wisconsin in Madison.

Each of the embryos was then micro-surgically divided by University scientists and taken to the USDA Forage Research Center, Prairie du Sac, Wisc. where a large research herd is maintained. Here each half of the divided embryos was placed in recipient Holstein heifers.

Mother nature again took over at this point. Four of the six halves resulted in pregnancies which terminated some nine months later with the birth of the identical twin bulls and two singles.

This joint ABS/University of



These are first identical twin bull calves born in joint ABS/University of Wisconsin research project.

Wisconsin project is funded by W.R. Grace & Company, ABS' parent company, and is designed to develop genetic improvement, embryo transfer and the production of identical twins through a variety of techniques.

"These identical twin bulls will be among the highest pedigree-indexed young bulls in the Holstein breed," R.E. Walton, President of

American Breeders Service, explained. "They are just the first of several pairs we hope to develop from mating 30 super genetic cows during the next two years."

"This program, combined with our current rate of sampling young sires, will serve to speed up improvement in the genetic worth of sires offered to dairymen world over," the ABS President said.

## Bowman named to Purina Honor Council

WEST WILLOW — In recognition of his outstanding service to livestock producers in his area, Tom Bowman of West Willow Farmers Assoc., Inc. has been named to Ralston Purina Company's Chow Honor Council.

Entry into the Chow Honor Council is granted to those who demonstrate exceptional high standards of performance and conscientious service, says W.M. "Dub" Jones, president of Purina's Agri Products group. "This honor puts West Willow Farmers Assoc., Inc. among the top livestock feed dealerships nationwide, and reflects Tom's expertise in animal nutrition and health programs," Jones adds.

West Willow Farmers Assoc., Inc. is one of 304 dealers who qualified for Chow Honor Council awards this year, chosen from approximately 5,400 Purina dealers nationwide.

"We want to welcome Bowman to the council," says Jones. "His selection is testimony to his outstanding efforts to provide area producers with the services and products they need for profitable livestock production. The Chow Honor Council is our way of recognizing individual dealers like West Willow Farmers Assoc., Inc. for their dedication and performance," he adds.

"I'm very proud to have been

named the Chow Honor Council," says Bowman. "Part of this honor is a direct result of the many new products and programs Purina introduced over the past year, including the Forage Balancer Brood Cow Feeding System, and several new dairy and hog chow products," he explains.

The feed supplier says he also looks forward to offering area producers an even broader range of products, services and programs in the years ahead. "With Purina's research support behind us, we will continue to

provide our customers with the latest livestock management, nutrition and health product information and programs," Bowman says.

"As one of the premiere companies serving American agriculture, we're proud to stand alongside the farmer in his efforts toward greater productivity," says Jones. "West Willow Farmers Assoc., Inc. is an integral part of this effort, and has made an important contribution to agriculture in Lancaster County," he concludes.

## Poultry health discussed

MANCHESTER, N.H. — Over fifty representatives of the Canadian poultry industry — feed, hatchery and poultry health specialists — attended the New Hampshire Poultry Health Conference recently.

Held at Manchester, N.H., the conference featured presentations and discussions about current poultry health topics.

The Canadian delegation was hosted by Cobb, Inc. poultry breeding company headquartered near Concord, Mass., and TUCO Products Company, Orangeville, Ontario. The U.S. visit also in-

cluded a tour of the Cobb facilities.

A worldwide marketer of poultry breeding stock, Cobb recently built a new quality assurance laboratory and a feed efficiency house plus remodeled other facilities. While at Cobb, the group was involved in discussions concerning avian influenza, gumboro vaccination, egg sanitizers and bird management.

The Canadian group was accompanied by representative of TUCO, an animal health manufacturer and division of The Upjohn Company.

## MF introduces post driver

DES MOINES, Ia. — Driving fence posts into hard-packed soil can mean hours of back-breaking drudgery in the field.

This chore can be greatly eased with the new Massey-Ferguson MF 390 Post Driver.

The MF 390 is a two-wheel, cart-mounted drop hammer unit capable of driving standard wood or steel fence posts into most soils with a minimum of effort.

A self-contained hydraulic system, with a 540-RPM, pto-mounted pump, permits use with small chore tractors not equipped with sophisticated hydraulic systems.

The four-spool hydraulic valve, conveniently located near the drop hammer, provides side-to-side and front-to-rear post levelling adjustment. It also gives up to 12 inches side shift for precise post positioning and includes hammer control for a light 'tap' or a full-fledged 'whollop'.

A swinging hitch permits off-set tractor positioning to clear fence wires when replacing broken posts.

A built-in post carrier, standard equipment on the MF 390, can carry a generous supply of posts to save transportation time.



The new Massey-Ferguson 390 Post Driver features a self-contained hydraulic system with pto-mounted pump.