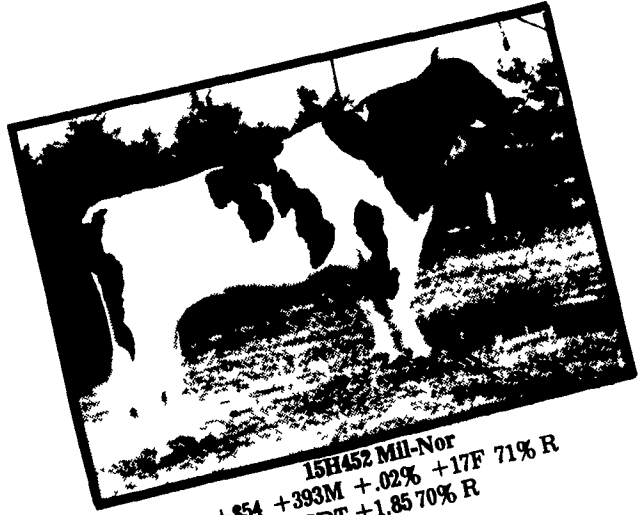


Quality Genetics For Your Heifers



15H452 Mil-Nor
+\$54 +393M +.02% +17F 71% R
PDT +1.85 70% R

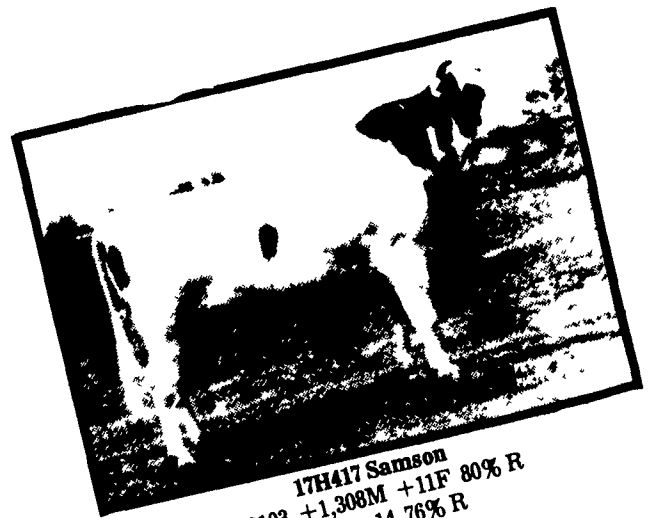


15H231 Very
+\$83 -43M +.30% +50F 97% R
PDT +.63 93% R

These well-proven Atlantic sires, above average for calving ease, used in conjunction with good heifer management are your key to a successful heifer AI program!



15H385 Demand
+\$49 +626M +5F 46% R



17H417 Samson
+\$103 +1,308M +11F 80% R
PDT +.14 76% R



17H387 Simon
+\$94 +748M +.00% +27F 82% R
PDT +1.09 68% R



1H266 Penstar
+\$103 +676M +.06% +35F 99% R



1H290 Willowvation
+\$108 +797M +.02% +33F 77% R
PDT +1.69 73% R



15H290 Attraction
+\$54 +525M +12F 78% R
PDT +.48 73% R

Don't sacrifice quality genetics in your herd, contact your Atlantic Technician or Direct-Herd Representative for these and more well-proven sires high on the NAAB calving ease list.

Atlantic

LIVESTOCK SERVICES BREEDERS COOPERATIVE

Member — NAL Affiliated Breeders

24-Hour Toll-Free Phones:
Lancaster area 569-0411
throughout Pennsylvania 800-732-0391
Delaware & Maryland 800-233-0216

INSPECTED AND APPROVED BY
GSS
CERTIFIED SEMEN SERVICES