

Flory named 4-H agent

HUNTERDON COUNTY — Terese Flory, Lebanon Boro, was recently named Hunterdon County 4-H Agent by the Hunterdon Board of Chosen Freeholders. She assumed her duties with the Cooperative Extension Service on April 2, according to Calvin Wettstein, senior county agent.

Flory's position-approval by the freeholders completes a three-way appointment; the county, the state through Rutgers-the State University, and the U.S. Department of Agriculture.

She prefers to be known as "TC." Her background is in outdoor education and recreation, and she has had extensive experience with youth and volunteer and staff leaders.

She holds a bachelor's degree from Ramapo College in 1976 and a master's from Indiana University in 1979. She has been employed in the Ridgewood, N.J. outdoor education program and was associate director at Camp Speers Eljabar YMCA in Dingman's Ferry, Pa.

Most of the Flory family resides in Louisville, Kentucky. Flory moved to Hunterdon County following her marriage to Lowell Snare, sports editor for the

"Hunterdon Review."

"TC" brings with her a wealth of experience in working with people as she assumes her new duties. She has great interest in young people, the out-of-doors, animals, and music.

Lancaster Holstein Club

The Lancaster County 4-H Holstein Club recently met for a reorganizational meeting.

The following people were elected officers: Karen Shertzer, president; Marilyn Landis, vice-president; Brent Brubaker, treasurer; Robert Barley, corresponding secretary; Don Welk, recording secretary; Krista Hershey and Nickey Wiver, game and song leaders; and Tom Barley, news reporter.

The next meeting will be held May 17 at 7:30 p.m. at the Farm and Home Center basement.

Brown Swiss 4-H Dairy Club

The Brown Swiss 4-H Dairy Club meeting was held on April 9 at the home of Edward Brommer. The meeting consisted of future calendar events for 1984.

Following the meeting County agent Glenn Shirk conducted an Easter Basket Auction.

The next meeting will be on Monday, May 14 at 7:30 p.m. at the Farm and Home Center. A demonstration by Angie Spickler and Earl Eshleman is planned.

York County 4-H Club

The York County 4-H members attended the Penn State Block and Bridle Club's Invitational Livestock Judging Contest on Saturday, April 7 at Penn State University.

The York County Senior team placed second in the contest with over 300 4-H and FFA members

from the state competing.

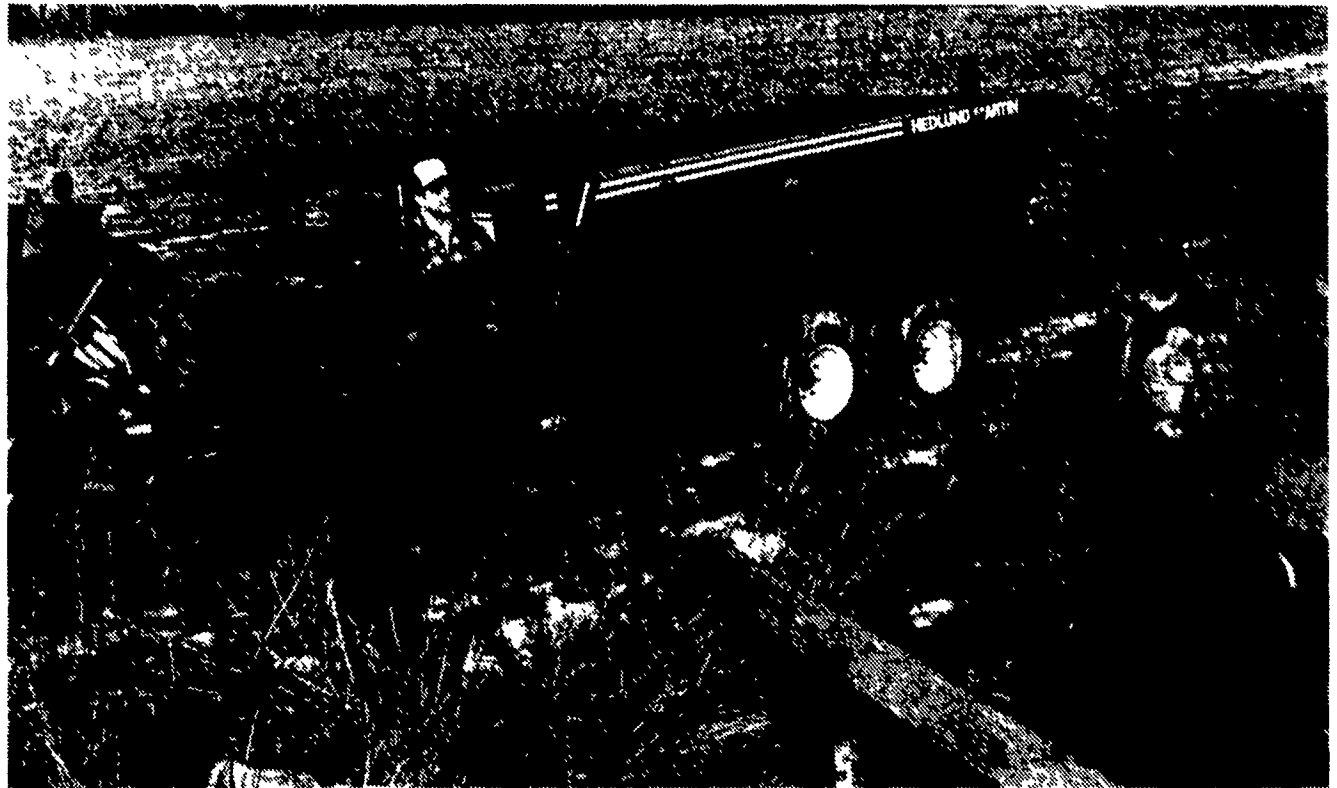
York County 4-H member Melissa Trostle was high individual in giving oral reasons, Jamie Kohr was third and Tim Ferrence was fourth.

York County's team was second in swine judging, third in sheep judging and third in beef judging.

Melissa Trostle was high individual in sheep judging and Tim Ferrence was high individual in beef judging and eighth highest in the total contest.

The Junior team from York County placed second in beef judging. J.P. Hausner was fifth in swine judging and Nancy Townsend was fifth over all in the Junior contest.

Scavenger spreaders probably look like nothing you've ever seen before.



Most revolutionary ideas do.

If the Scavenger spreader looks slightly unconventional, there's a good reason. In fact, there are several good reasons

For one thing, you need much more from your manure handling operation today than you did a few years ago. And Scavenger is designed for today's needs. It's more efficient. It handles the kinds of manure produced today—liquid, semi-solid, pen pack (even frozen)—all year round. Based on a whole new spreader technology, Scavenger simply does more, faster, and with less bother.

The big difference—a square-tube auger!

Unlike web chains or flails found on conventional spreaders, Scavenger's 10' x 10' square-tube auger sets

up a unique "pulse action" to thoroughly break up manure as it moves through the tank. The auger can also move hydraulically up and down to eliminate bridging—minimize wintertime freeze up.

Get spread patterns of up to 50 ft.!

Martin-design Variflo discharge system makes it possible. This ingenious hydraulic gate and high-rpm expeller reel combination lets you choose your optimum rate of application—from top dressing to heavy springtime spreading.

Fewer moving parts—fewer breakdowns!

Let's face it . . . no one likes to handle manure. That's why it made sense to build a simple spreader. One

with no flails. No leaky endgates. No apron chains to break or freeze in winter months. Add to this sealed, welded Uni-body construction and you've got a unit built to take all the abuse you can dish out

Stop by your local Hedlund/Martin dealer for a demonstration. You'll see why the beauty of the Scavenger spreader isn't so much in how it looks. It's in how it works.

For the name of the dealer nearest you, write Dept. H-1, Hedlund/Martin, Inc., 841 Kutztown Road, Myerstown, PA 17067.



Call Your Martin Dealer for Details

PENNSYLVANIA

B & R Farm Equipment
Beavertown, PA
717-658-7024

Norman D. Clark & Son Inc.
Honey Grove, PA
717-734-3682

Clugston Implement
Chambersburg, PA
717-263-4103

Dilt's Farm Equipment
Marion Center, PA
412-286-9606

Thomas Dunlap
Jersey Shore, PA
717-398-1391

Dunkle & Grieb
Center Hall, PA
814-364-9109
Mill Hall, PA
717-726-3115

Evergreen Tractor Co.
Lebanon, PA
717-272-4641

H.R. Getshall & Sons
Carlisle, PA
717-249-2313
Loysville, PA
717-789-4343

A.L. Herr & Bro.
Quarryville, PA
717-786-3521

Hess Farm Equipment, Inc.
Canton, PA
717-673-5143

Histand Farm & Home Service
Rome, PA
717-744-2371

William Hobensack's Sons
1060 Greeley Ave.
Ivyland, PA
215-675-1610

R.S. Nollinger & Son
Mountville, PA
717-285-4538

C.B. Hooper & Son
Intercourse, PA
717-768-8231

Lone Maple Sales & Service Inc.
New Alexander, PA
412-668-7172

M & M Barn Sales
Westfield, PA
814-334-5504

Messick Farm Equip., Inc.
Elizabethtown, PA
717-367-1319

Red Wing Farm
Fleetwood, PA
215-944-0401

Tobias Equipment Co., Inc.
Halifax, PA
717-362-3132

W & J Dairy Sales
Oxford, PA
717-529-2569

Zimmerman Farm Service
Bethel, PA
717-933-4114

MARYLAND

H.B. Duvall
Frederick, MD
301-662-1125

Enfield Equipment, Inc.
Whiteford, MD
301-452-5252

Farmer's Supply Co.
Westminster, MD
301-848-6776

DELAWARE

Delridge Supply, Inc.
Greenwood, DE
302-349-4327

NEW JERSEY

Jones Dairy Service
Medford, NJ
609-267-0198

WE BUILD FOR THE DAIRY INDUSTRY

AVAILABLE

All Natural
New York State Cheddar Cheese
or higher Moisture Cheese
Like Longhorn or Colby
42 Lb. Blocks

Medium Sharp *1.90 per Lb.
Mild *1.80 per Lb.

Prices Postpaid

Please send Check or Money Order to:

ADIRONDACK CHEESE CO.

RD 1 Box 74, Newport, New York 13416



1984
EXTRAZINE™
HERBICIDE

SATISFIED PERFORMANCE
AGREEMENT

Broad-Spectrum Weed Control In A Single Jug

AGRICULTURAL CHEMICALS & HERBICIDES

JONAS S. EBERSOL

1 1/2 Miles North of Bird-In-Hand
2689 Stumptown Road
Bird-In-Hand, PA 17505