

**Public Auction Register**

Closing Date Monday 5 00 P M  
of each week's publication

THURS SEPT 20 Monthly Cow Sale at Mel Kolb, Inc., Maryland Farm, Woodsboro, MD, 1/2 mile North West of Woodsboro on Rt 550 in Frederick Co

TUES SEP 12 Public Sale of Feeder Cattle and Feeder Pigs at Carlisle Livestock Market exit 12 off I-81, 717-249-4511

FRI OCT 12 - 1 30 PM Public Auction of State Grade Consignor Feeder Pig Sale Located at the Carlisle Livestock Market, Inc

Cattle and Feeder Pigs at Carlisle Livestock Market exit 12 off I-81, 717-249-4511

Pig Sale Located at the Carlisle Livestock Market, Inc

THURS NOV. 15 - Monthly Cow Sale at Mel Kolb, Inc., Maryland Farm, Woodsboro, MD, 1/2 mile North West of Woodsboro on Rt 550 in Frederick Co

WED OCT. 31 - 12 Noon Annual Dairy Show and Sale at New Holland Sales Stables, Inc 12 miles East of Lancaster off Rt 23 in New Holland, PA Abe Diefenbach, Manager.

**NOVEMBER**

FRI NOV 2 - Monthly Cow Sale at Mel Kolb, Inc Lancaster Farm, 2220 Dairy Road, Lancaster, PA

FRI NOV 9 - 9 00 A M Public Sale of Farm Equipment at New Holland Sales Stable, Inc Located 12 miles East of Lancaster off Rt 23 in New Holland, PA Abe Diefenbach, Manager

FRI NOV 9 - 1 30 PM Public Auction of State Grade Consignor Feeder

**DECEMBER**

FRI DEC 7 Monthly Cow Sale at Mel Kolb, Inc Lancaster Farm, 2220 Dairy Road, Lancaster, PA

FRI DEC 14 - 1 30 PM Public Auction of State Grade Consignor Feeder Pig Sale Located at the Carlisle Livestock Market Inc

THURS DEC 20 - Monthly Cow Sale at Mel Kolb, Inc., Maryland Farm, Woodsboro, MD, 1/2 mile North West of Woodsboro on Rt 550 in Frederick Co

**MERRILLWAY FARM COMPLETE DISPERSAL**

(CATTLE & MACHINERY)  
**GEORGE, JOAN & DUANE MERRILL - OWNERS**  
CATO, N.Y. (Cayuaga Co.)

**WEDNESDAY, APRIL 25, 1984**  
at 10:00 A.M.

Sale to be located at the farm on Johnny Cake Hill Road, 3 miles west of Cato, N.Y., Thruway Exit 40, take 34 North to Cato, 370 west to Townline Rd. right on Johnny Cake Hill Rd.

**79 HEAD REGISTERED & HI-GRADE HOLSTEINS 79**

Predominately homebred herd, about 95% registered with 42 cows averaging 15,107M 3.4 511F DHIA, 6 recently fresh, 3 due in June, 1 July, 4 August, 4 September, 5 October, 6 November, 13 cows from 60-80# and daily averaging 55# /day on home grown feed, 5 over 16,000, 6 over 17,000, 3 over 18,000 and 1 over 19,000. Featuring a young Willow fresh 3/27 milking 74# of 5.4% and last years record 4-10 336D 19,122M 3.9 744F plus 3 daughters including Joney SSF Astronaut Brov yearling, Granddam to this family by Apache. Also top 1st calf heifer fresh 2/28 with 2-3 149D 6709M 3.7 250F inc., sired by Nuthva Skychief (Astronaut from Ex Kate with 4-5 305D 20,370M 3.7 751F and preg. to Warsaw (+1023)

Plus 37 head of young, growthy well bred heifers and calves with 1 springing, 16 open heifers and 9 calves. Featuring a Shamrock born 2/5 from Locust-tree Elevation Supreme dam with 3-5 61D 4181M 3.8 158F (inc.) and gaining all the time. The young stock is superb.

Cattle TB tested, vaccinated, shot for lepto and shipping fever.

**COMPLETE LINE OF MACHINERY (It's Tops)**

Line of well kept machinery includes: JD 4440 tractor w/cab, 4 wheel drive, power shift only 890 hrs., JD 4230 tractor w/cab, 1975 GMC 6000 truck w/riester 16' grain body, 15,000 miles, JD B tractor w/new tires, A.C. Gleaner K-2 Combine w/3 row corn and 13' grain heads, rice tires, like new only 340 hrs., JD 1710A chisel plow, JD 310 DISC, JD 7000 4 row planter w/monitor, JD 250 grain drill, JD 1209 Haybine cut only 25 acres, JD forage chopper w/2 row corn and hay heads, JD Flail chopper, 2 JD 214 chuck wagons, JD 513 + 16" hydra reset plow, JD 450 Hydro ram spreader, JD hay rake, JD #5 mower, Fahr hay tedder, NH 315 baler w/thrower can't be told from new, Gehl 99 blower used 2 yrs., grass seed spreader, 14' midwest bar, 4 basket wagons, Century 500 gal. sprayer w/rotary pump, Brillion cultimulcher, cultipacker, JD Roto tiller, Gillson roto tiller, 38' Little Giant elevator, Little Giant gravity box, 2 electric waterers, stock tanks, set of duals, quantity of pipe and lumber, air compressor, wire, barrel Kendall hydraulic fluid, 30 telephone poles. This is one of the best lines of machinery to be sold this year. Many pieces are 2 yrs. old or less and have been stored inside. Please be on time as there are very few small items.

TERMS: CASH OR GOOD CHECKS DAY OF SALE, ID REQUIRED

LUNCH AVAILABLE

OWNERS:

**GEORGE, JOAN & DUANE MERRILL**  
Cato, N.Y. 315-626-2651

SALE MANAGED BY:

SENNETT SALES  
HICKS & SPINGLER LIVESTOCK INC.  
Sennett, N.Y.  
Mark Kent 315-253-3579  
Ken Spingler 315-834-9266  
Bob Hicks 351-252-1037

SAT SEPT 29 12 Noon Red Carpet Horse Sale Public Auction of Registered Quarter, Appaloosa and Thoroughbred Horses located at the Cambria Co Fairgrounds, Cambria, PA. Kevin Lines and Chris Rowe, Owners Davis and Empleton, Auctioneers

**OCT.**

THURS OCT 4 - Monthly Cow Sale at Mel Kolb, Inc Lancaster Farm, 2220 Dairy Road, Lancaster, PA

TUES OCT 9 - 7 PM Public Sale of Feeder Cattle and Feeder Pigs at Carlisle Livestock Market exit 12 off I-81, 717-249-4511

THURS OCT 18 - Monthly Cow Sale at Mel Kolb, Inc., Maryland Farm, Woodsboro, MD, 1/2 mile North West of Woodsboro on Rt 550 in Frederick Co

TUES OCT 23 - 7 PM Public Sale of Feeder Cattle and Feeder Pigs at Carlisle Livestock Market exit 12 off I-81, 717-249-4511

TUES OCT 30 - 7 PM Public Sale of Feeder

**DEALER IN ALL KINDS OF LIVESTOCK**

Also Crippled & Down Cattle

**MARLIN S. IRWIN**

Quarryville, PA  
PH: 717-786-3016



**PUBLIC AUCTION**

MEADOWELL COMPLETE DAIRY HERD DISPERSAL QUANTITY OF SEMEN

**56 REGISTERED HOLSTEIN DAIRY CATTLE 56**  
Located on Farm 5 miles E. of Hughesville, Pa. Just off Rt. 118. Watch for Auction Arrows off Hughesville - Lairdsville Rt. 118 Highway.

**WEDNESDAY, MAY 2, 1984**  
Starting 11:00 A.M.

**56 REGISTERED HOLSTEIN DAIRY CATTLE 56**  
Herd consists of 33 Milking Age including 13-1st. Calf Heifers, 9 Bred Heifers Due from July till Fall, Balance Calfhod to Breeding Age 5 Recently Fresh, 7 Due June, 3 Due July, 12 Due Aug & Sept, Balance in various Stages of Lactation

95% Home-Raised Certified & Accredited  
100% Calfhod Vaccinated DHIA & DHIR Records  
Preg Checked-Innoculated for Shipping Fever  
30 Day Health Charts

1-84 Classification: 1EX 7VG 13GP 10G  
2/84 DHIA RHA 32 6 Cows 14,989M 3 8% 565F  
1983 Average: 32.8 Cows 15,250M 568F

Sample of Kind that Sells:  
Blossom (90 2E) Vernon Dau Records up to 24,276M, 918F sells w/VG Al Dau Just Fresh 3-30-84 w/Chairman Heifer, Yearling Wiseman, & GP 80 Jemini Also from Blossom 2 yr old 82 GP Jemini bred to Chairman

VG 87 Lucky Dau from GP elevation, 2nd Dam VG Master A records to 18,337M, 4 1%, 746F due Aug to Saul Also yearling Jet Stream sells

VG 87 Job from VG Charmcross 2nd Dam 20,000 lb Elevation w/records to 2 00 359 Da, 21,780M 4 0%, 884F selling with yearling Creek heifer

VG 86 Merry King w/records to 20,412M, 4 4%, 889F Her 2 yr old Jemini sells & bred Trump heifer due Aug

VG 85 Marvex from 3E 91 Kennedy 2nd Dam 600lb Mooseheart Pioneer, Due June to Spirit along with Mat sister by Creek due Aug. to Spirit

VG 85 Transmitter w/Records to 18,424M, 650F from VG Sheldon Mel Ivanhoe selling w/Dec Jet Stream heifer & Bred Jerry heifer due July to Wiseman

GP 83 4.0% Kingpin from VG Black Eagle w/records to 19,280M, 4 7%, 921F 2nd Dam Ex Due July to Chairman

Many more of the Same Type & Production Include: Sires 8 Jemini, 6 Ace, 5 Creek, 3 Jet Stream, 2 Spirit, 2 Chairman, 2 Job, Transmitter, Merry King, Marvex, Lucky, Trump, Al, Matador, Etc

Service Sires Include: 7 Spirit, 7 Lone Ranger, 5 Chairman, 5 Stewart, Elevate, Wiseman, Saul, Ira, Etc

Semen Inventory Includes: Elevation, Jet Stream, Ace, Jerry, Jemini, Marvex, Betty Chief, Merry King, Double Triune, Job Creek

Auctioneer's Note: Plan to attend for foundation cattle that is noted for longevity & not pushed for high production Owners selling after 35 years in the dairy business

TERMS: Cash or Good Check Day of Sale.

Owners, **ROY & HELEN SCHULTZ**  
R.D.4, Muncy, Pa. (717) 584-3191  
Conducted By **FRALEY AUCTION CO.**

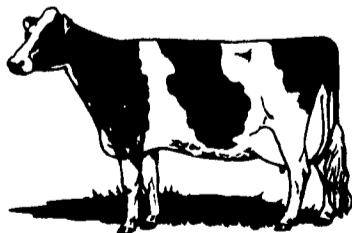
LICENSED & BONDED  
Auct. Lic. NO.: AU-001194-L  
R.D. 1, Muncy, Pa. 17756  
(717) 546-6907

Experience Doesn't Cost You - It Pays!

Pedigrees: Dale Hoover  
Lebanon, Pa. (717) 867-2489

Lunch Available Sale Under Tent

**MELVIN KOLB, INC.**



**QUALITY HOLSTEIN DAIRY COWS**

- Trailer Loads Fresh Dairy Cows.
- Springing and Fresh Purebred & Grade Cows.
- 1st and 2nd Calf Heifers, Close or Fresh.
- Stock Bulls
- Purebred and Grade Heifer Calves

\* Daily Sales \*  
\* Public Sales Monthly \*  
\* Dispersals \*

**LANCASTER, PA. FARM**  
717-569-6800/2106

Next Monthly Sale  
Thurs. May 3  
7:30

**WOODSBORO, MD. FARM**  
301-898-7720/7663

Next Monthly Sale  
Thurs. May 17  
7:30



An Opportunity to Buy quality Jerseys. Do you need more protein in your tank? FOR: High producers, show type individuals, Top calves in classes, junior calves.

Come to

**THE MARYLAND JERSEY CATTLE SALE**

**SATURDAY, APRIL 28, 1984**  
11:30 A.M.

**40-HEAD REGISTERED JERSEY CATTLE-40**

At Kahler Gaywinds Farm Keymar Md. located between Rts. 194 and 75 turn left from Ladiesburg on Good Intent Rd., turn right at Keymar Rd., Gaywinds on right.

Daughters of following sires available: Samson - Poet - Gemini - M. General - Jeweler - Plus Noble Surville - 5 Milestone - Celia's Master.

Interstate Health Papers Furnished

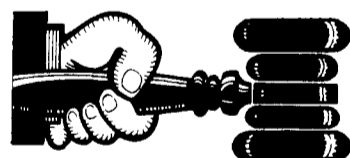
At 11:00 A.M. Show Equipment of S. Braden King Solid oak show box/brass corners & plates show halters - tie halters, buckets - blankets - etc.

Fore more information and catalogs call:

Auctioneer:  
S. Braden King  
Boonsboro, MD  
301-432-6002

**HANSEN HOFFMAN**  
Rt. 1 Box 37  
Ridgely, Md. 21660  
Te. (301) 634-2255

Gaywinds Farm  
301-663-3537



**AUCTIONEER'S DIRECTORY**

**C.H. WOLGEMUTH**  
RD #2 MANHEIM  
PA  
AUCTIONEER  
Member of



COMPLETE AUCTION SERVICE  
CALL  
717-665-5664

**NOTICE**

To assure that your Public Sale appears in the Public Sale Section we must have your advertisement by 4 P.M. Tuesday of each week's publication.



**Kreider & Kline Auctioneers**

COMPLETE PROFESSIONAL AUCTION SERVICE  
**REAL ESTATE — FARMS & RESIDENTIAL**  
PERSONAL PROPERTY — ANTIQUES —  
FARM STOCK SALES — LIQUIDATIONS

**RANDAL V. KLINE**  
AUCTIONEER REALTOR  
717 733 1006  
717 569-8701

**LLOYD H. KREIDER**  
AUCTIONEER  
717 786 3394